

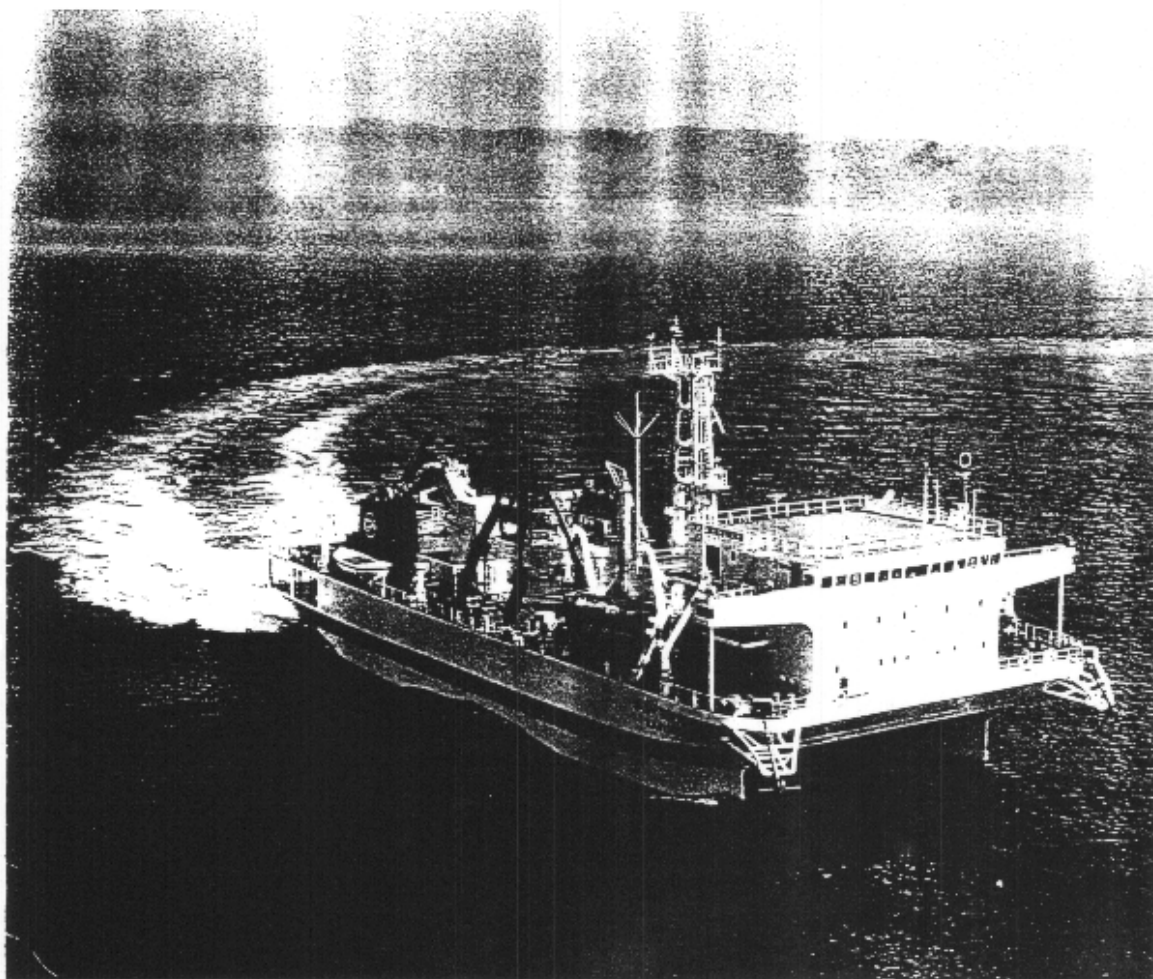
APPENDIX IX

SWATH Vessels

[KAIKO](#)
[PIONEER](#)
[IGSS](#)
[SLICE](#)

Research Vessel

KAIYO

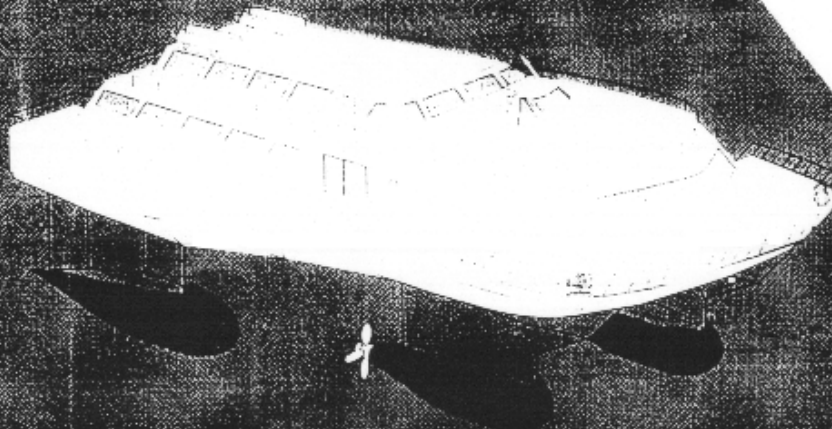


JAMSTEC

	PIONEER	IGSS
Owner	Global Industries, Ltd. Lafayette, Louisiana	International Hospitality, Inc. Toronto, Ontario, Canada
Service	Offshore support	Gaming
Delivery	November 1996	December 1997
Builder	Aker Gulf Marine and Global Industries	Brown & Root, Inc.
Hull Material	Steel	Steel
Superstructure	Steel	Aluminum
Class. Society	ABS	ABS
Length:		
Overall	200 ft.	250 ft.
Box	200 ft.	230 ft.
Fwd. Struts	69	64
Aft Struts	54	54
Lower Hulls	200	225 ft.
Beam:		
Overall	87 ft.	93 ft.
Box	87 ft.	93 ft.
Struts (4 ea.)	9 ft.	9 ft.
Lower hulls	24 ft.	24 ft.
Draft:		
Transit (min.)	12 ft.	12 ft.
Ops. (max.)	21.5 ft.	21 ft.
Displacement:		
Transit	2,150 LT	2,747 LT
Operations	2,800 LT	3,350 LT
Payload (mission)	340 LT	610 LT
Speed:		
Cruise	12 knots	10 knots
Trial	13 knots	12 knots
Power:		
Installed	2,790 KW	4,200 KW
Propulsion	2,400 KW	2,010 KW
Propulsion Type	DC Electric	DC Electric
Number of Struts	Two per Side	Two per Side
Steering Type	Rotational Thrusters	Conv. Overhanging Rudder
Design Sea State	6	5
Cost (w/o mission outfit)	Less than \$20M	Less than \$20M

MARINE SYSTEMS

SLICE ATD



A NEW MULTI-USE CRAFT

THE SLICE PERFORMANCE ADVANTAGE

- SLICE REQUIRES LOWER INSTALLED POWER AT HIGH SPEEDS
- SLICE ATTAINS HIGHER SPEED WITH SAME INSTALLED POWER

