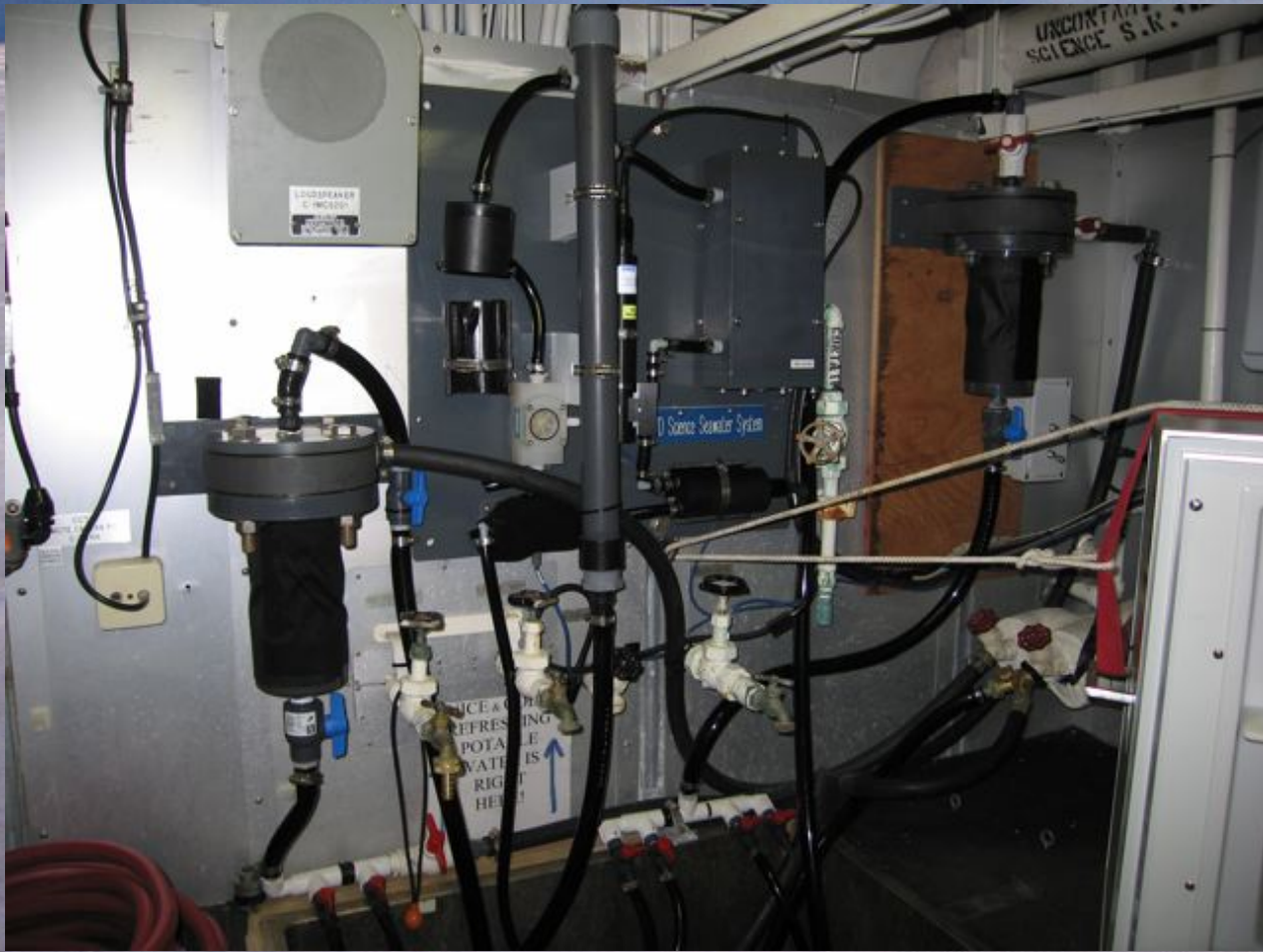
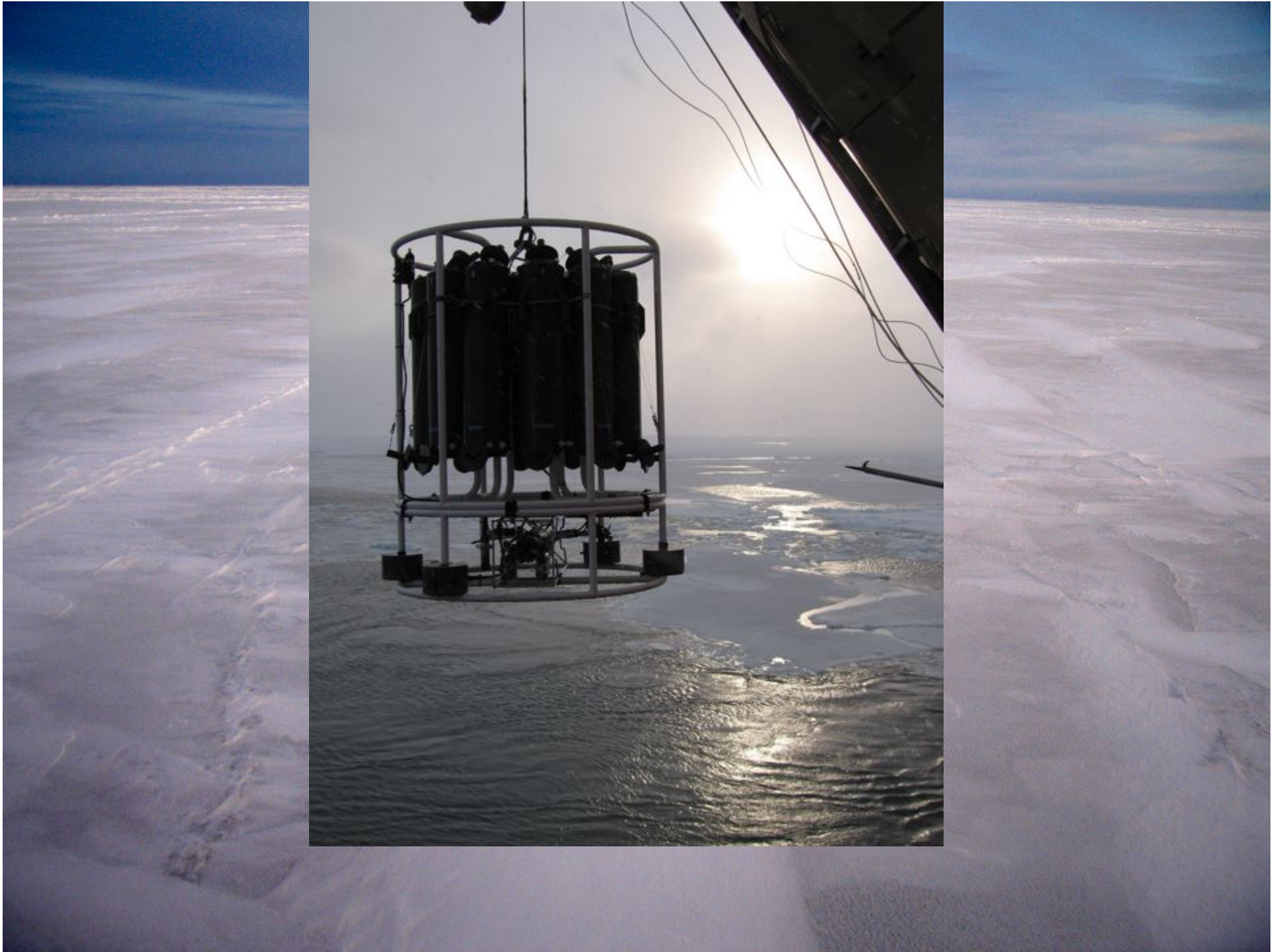


# Healy science gear ownership

• Description	QTY	Owner
• CTD carousel and fish-	2	?
• CTD sensors	40	?
• TSG (flow through)	2	SIO
• Flow thru sensors	6	SIO
• Met sensors	6	SIO
• XBT	1	
• POS MV	1	LDEO





# Healy science gear ownership

- DI Water system
- Upright Incubators-2
- Sleds- 3
- Science Vans-3
- Dredges-4







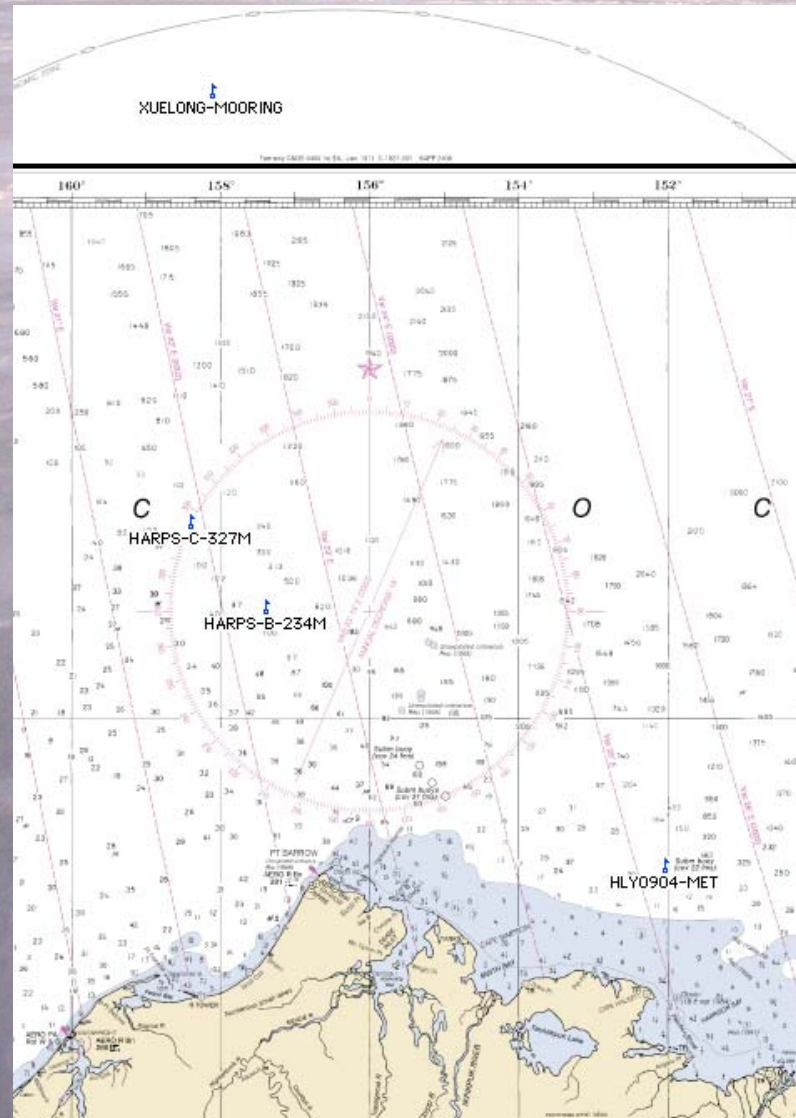




# Healy 2009

- **HLY0901 Mar 10 - Mar 31 Cooper 22 day**
- **HLY0902 Apr 3 - May 11 Ashjian 39days**
- **HLY0903 Cancelled**
- **HLY0904 Jul 29 – Aug 6 Pickart 13 days**
- **HLY0905 Aug 7 – Sep 16 Mayer 41 days**
- **20 October dry dock availability**

# 2009 moorings of opportunity



# Healy 2010

- Dry dock availability ends **Mar 23**
- Shake down - 14 days
- Underway from Seattle **May 11**
- Multibeam testing- 20 days
- ONR- Ashjian 3 days **Jun 1**
- NASA- 30 days **Jul 1**
- UNCLOS 40 days **Aug 7**
- NSF- ??
- TACT training due **Fall**

# Healy Van relocation on Bow

- Pete Zerr (OSU) from UNOLS West coast van pool, is facilitating the feasibility quote
- 3 quotes from Naval Architecture firms in Seattle
- Waiting to hear from NSF about funding



# Arctic AFF capability

- AFF on the ship comes via the Web
- Helo-Iridium-web-Inmarsat-Icebreaker
- Proposal is to remove Inmarsat connection
- Helo-Iridium-Icebreaker
- Cost \$6,500



Sky Connect LLC  
www.skyconnect.aero

Sky ▶ Connect

RINGLER  
POWER  
OFF HOOK  
DATA CALL  
VOICE CALL  
REGISTER  
SC1