

# Multibeam Status Focus Group

Dale Chayes

Lamont Research Engineer

Instrument Lab

Lamont-Doherty Earth Observatory of Columbia University

UNOLS RVTEC Meeting

BIOS November 2010



Ship	Manufacturer	Model	Frequency (kHz)	Swath Width (deg)	Ice	Status
Atlantis	SeaBeam	SB2112	12	120	N	Operational
Blue Heron	Reson	SeaBat 8101	240	150	N	Operational
Healy	Kongsberg	EM122	12	150	Y	Operational
Kilo Moana	Kongsberg	EM122	12	150	N	Operational
Kilo Moana	Kongsberg	EM1002	95	150	N	Operational
Knorr	SeaBeam	SB3012-P1	12	120	N	Operational
Langseth	Kongsberg	EM122	12	150	N	Operational
Melville	Kongsberg	EM122	12	150	N	Operational
Okeanos Explorer	Kongsberg	EM302	30	140	N	Operational
Palmer	Kongsberg	EM120	12	150	Y	Operational
Revelle	Kongsberg	EM122	12	150	N	Operational
Ron Brown	Kongsberg	EM122	12	150	N	Operational
Sharp	Reson	SeaBat 8101	240	150	N	Operational
Sikuliaq	Kongsberg	EM710	70	140	N	Planned
Sikuliaq	Kongsberg	EM302	30	140	N	Planned
Thompson	Kongsberg	EM302	30	150	N	Operational
Thompson	Atlas	Hydrosweep DS	15.5	90	Y	Down
Updated: 2010-11-12	Comments to <a href="#">Dale Chayes</a>					

<http://www.ideo.columbia.edu/~dale/projects/multibeam-support/>



# Outline

- Discussion at previous (2009) RVTEC
- Events since RVTEC 2009
- Healy SAT
- Discussion



Ideas/talking points for  
UNOLS academic research  
fleet multibeam *improvement*

UNOLS RVTEC  
November 20, 2009



# Goals (ideas)

- Improve quality of data
- Improve quantity of data per year
- Stabilize maintenance costs

13 words (Meeting Marc's challenge of explaining "it" in less than 25)



# Possible actions (1)

- Identify advisory group
- Propose a plan to NSF
- Improved communications w/ vendor (KUTI)
- Raise the understanding/skill level in the operating community
- Negotiate a fixed price/year maintenance agreement
- Evaluate "depot" spares arrangement



# Possible actions (2)

- Establish and maintain a patch test site/clearing house (web)
- Develop & maintain accurate configuration documentation/ship
- Document best practices (installation, operation, maintenance...)
- Evaluate "depot" spares arrangement



# Possible actions (3)

- Coordinate hands-on education/training events (underway during transits) for our at-sea technical personnel

- ?????



# Events in 2010

(that I'm aware of)

- Meeting at NSF (June 16, 2010)  
[ftp://ftp.soest.hawaii.edu/pjohnson/NSF\\_Multibeam\\_Workshop/](ftp://ftp.soest.hawaii.edu/pjohnson/NSF_Multibeam_Workshop/)
- Healy EM122 install and acceptance
- Langseth array issues
- Melville flap
- Thompson EM300 -> EM302 upgrade
- ?





Monday, November 15, 2010





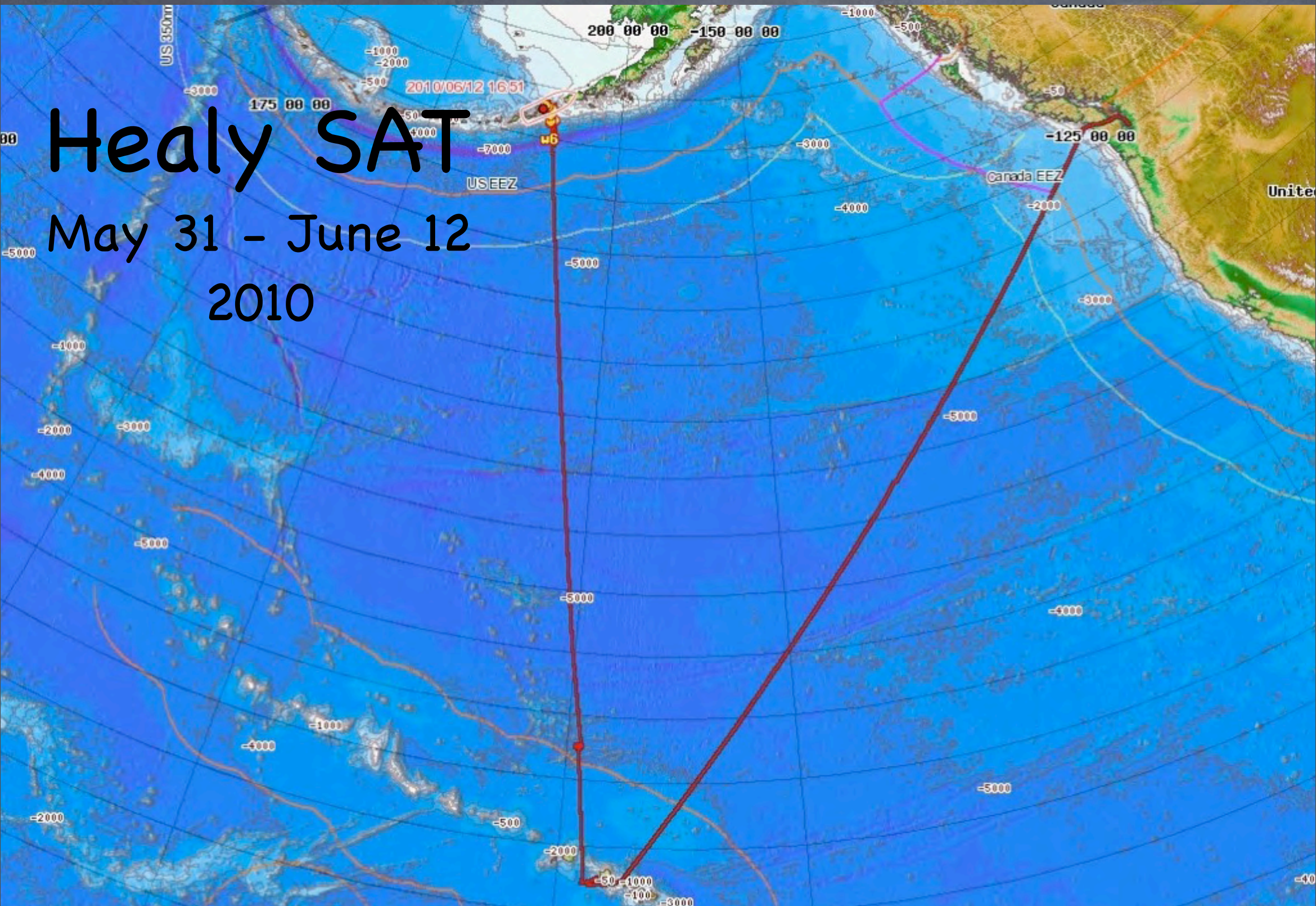
Monday, November 15, 2010





Monday, November 15, 2010

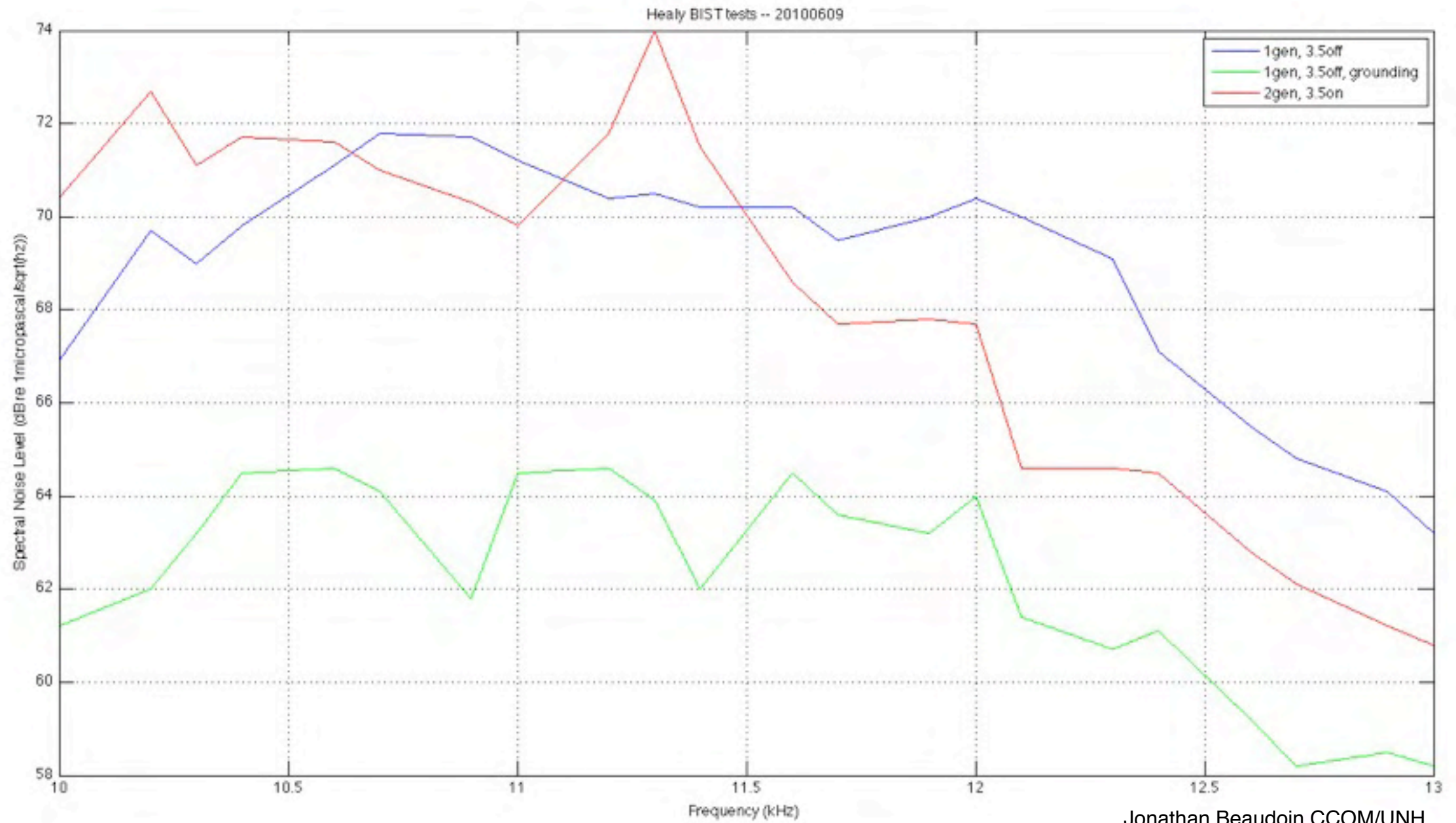




# Healy SAT

May 31 - June 12  
2010

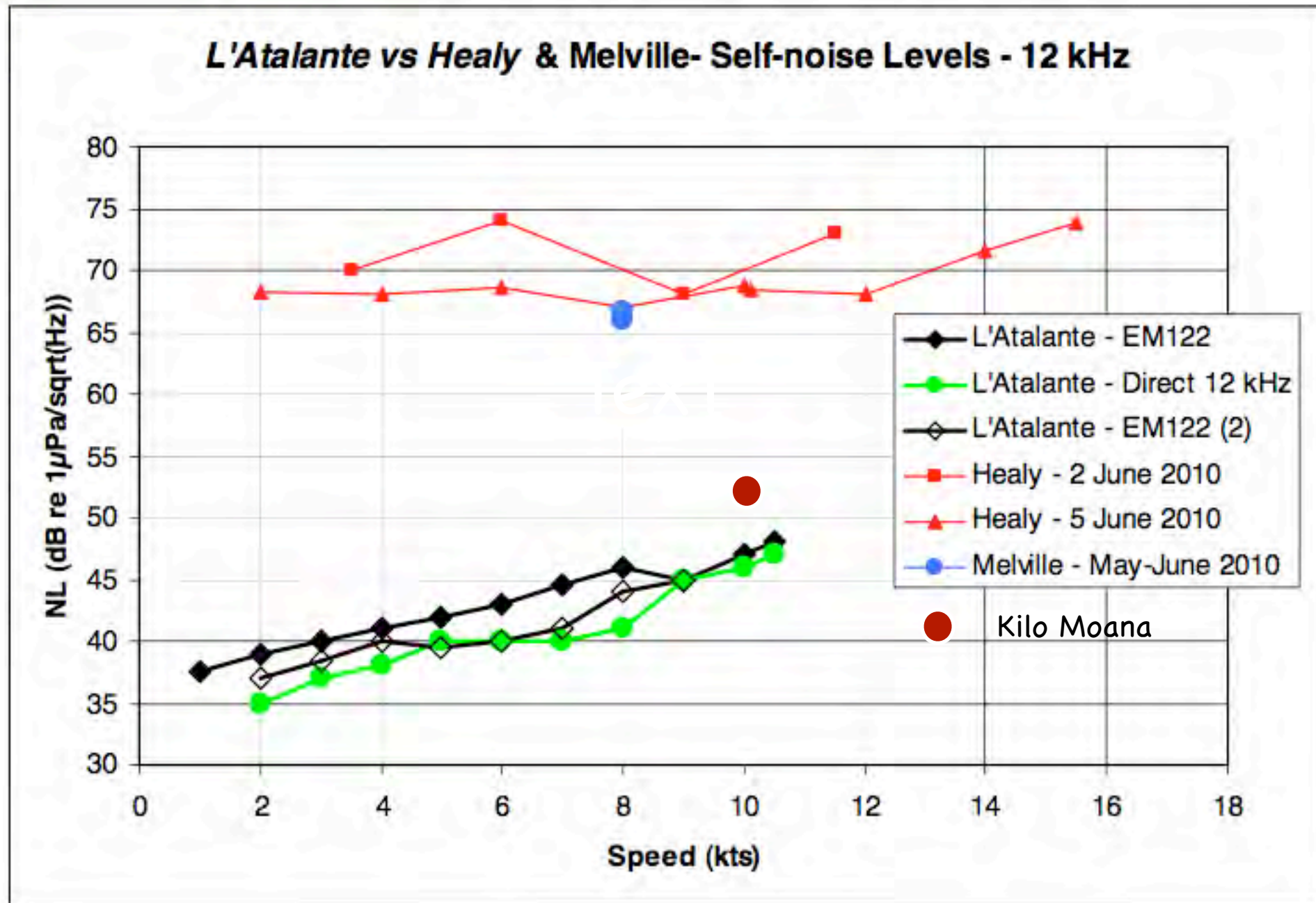




Jonathan Beaudoin CCOM/UNH

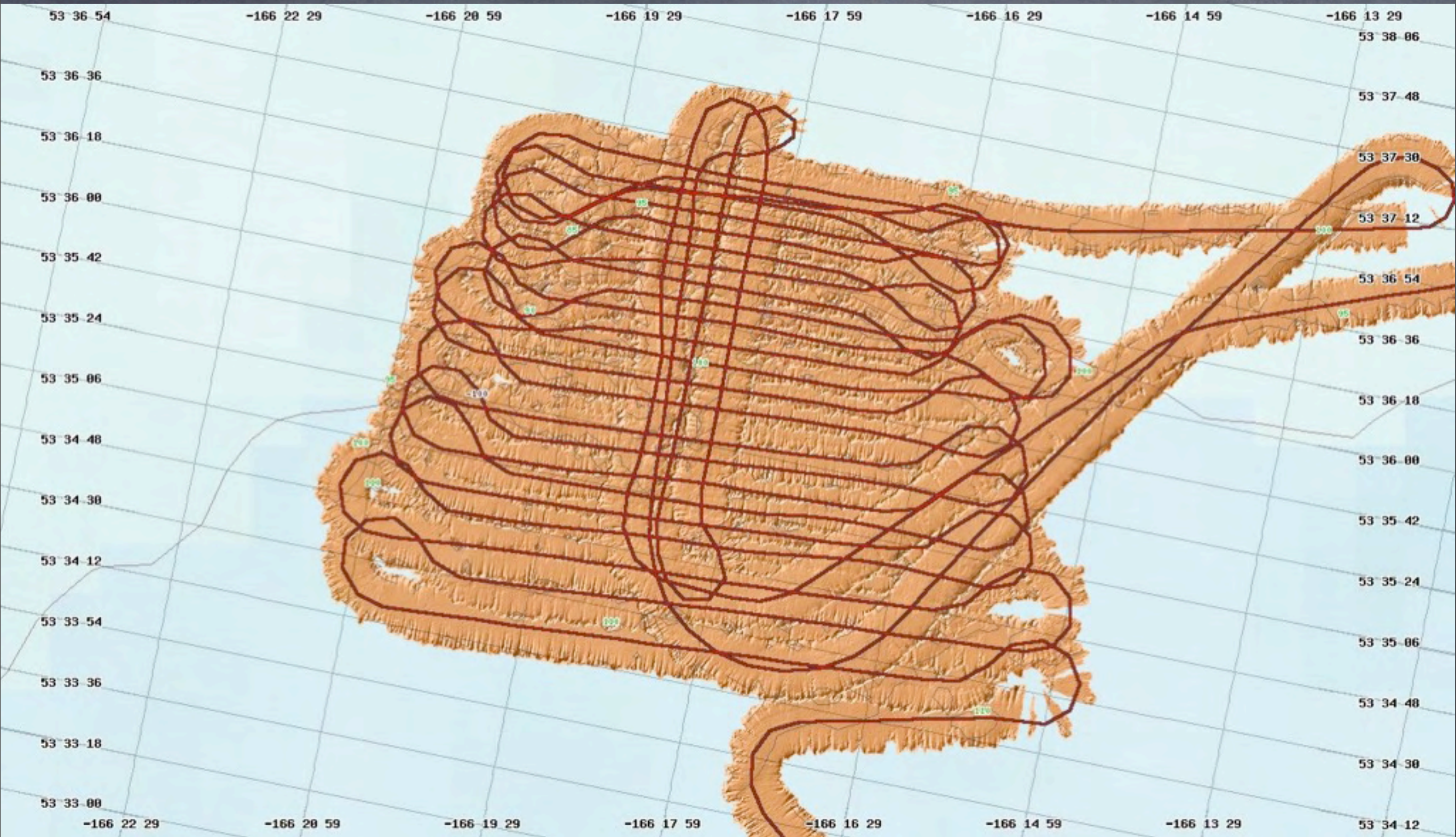


L'Atalante vs Healy & Melville- Self-noise Levels - 12 kHz





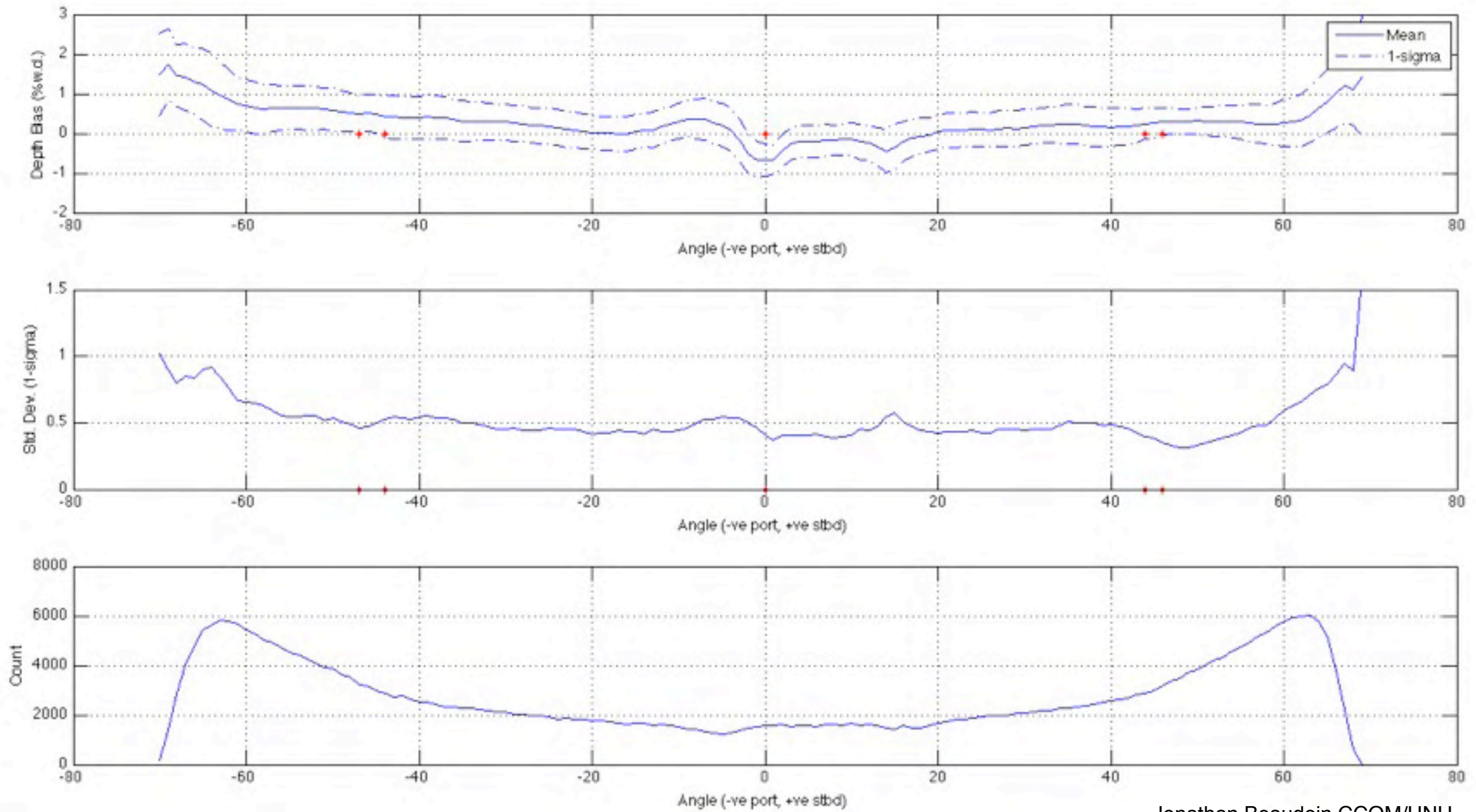
# HLY10TC EM122 SAT area 4 (~100m)



November 9, 2010



# HLY10TC EM122 SAT area 4 (~100m)



Jonathan Beaudoin CCOM/UNH



# How do you make an “easy to grasp” picture of complicated events?

[http://www.ideo.columbia.edu/~dale/projects/healy/timeline/local/local\\_example.html](http://www.ideo.columbia.edu/~dale/projects/healy/timeline/local/local_example.html)

<http://www.simile-widgets.org/>



# Discussion?



[www.dilbert.com](http://www.dilbert.com)

Dale Chayes  
[dale@ideo.columbia.edu](mailto:dale@ideo.columbia.edu)