



# Future of the US Research Fleet

UNOLS CHIEF SCIENTIST TRAINING  
Bermuda Institute of Ocean Sciences  
October 6 , 2014

JON ALBERTS  
UNOLS Executive Secretary





R/V SIKULIAQ



# Ocean Class AGOR Program

## Program Status

24 April 2014

*Prepared For*  
*RVOC*

*Mike Prince (CTR)*  
*Research Facilities*  
*(321RF)*  
*Office of Naval Research*

# Ocean Class AGOR



## Key Characteristics:

- Hull Material Steel; Aluminum pilothouse
- Length 238 ft
- Beam (Max) 50 ft
- Draft 15 ft
- Displacement 3043 LT (Full Load)
- Sustained Speed 12 kts
- Range 10,545 nm
- Endurance 40 days
- Propulsion 4 x 1044 kW Diesels, 2 x 879 kW Electric Propulsion Motors, 2 x Controllable Pitch Propellers, Bow & Stern Thrusters
- Accommodations 20 crew, 24 science berths
- ABS Classed/ABS Designed to ABS ✕A1 Circle E, ✕AMS and ✕ACCU, NIBS, Ice Class D0, USCG COI

**Mission:** Integrated, interdisciplinary, general purpose oceanographic research in coastal and deep ocean areas. Oceanographic sampling and data collection of surface, mid-water, sea floor, and sub-bottom parameters.

**Quantity:** Two (2)

**User:** Woods Hole Oceanographic Institution (AGOR 27), Scripps Institution of Oceanography (AGOR 28)

**Ship Names:** R/V *Neil Armstrong* (AGOR 27)  
R/V *Sally Ride* (AGOR 28)

**Builder:** Dakota Creek Industries, Inc.

**Contract:** FFP

**Contract Value:** \$177.4M

**ROM Unit Cost:** \$74.1 M (lead), \$71.0M (follow)

## Key Events:

- |                                    | Date:        |
|------------------------------------|--------------|
| • Phase I Contract Award           | Jan 10       |
| • Milestone B/C                    | Sep 11       |
| • Phase II Contract Award          | Oct 11       |
| • Follow Ship Award                | Feb 12       |
| • Start Construction (Lead Ship)   | Jun 12       |
| • Start Construction (Follow Ship) | Jul 12       |
| • Launch 1 <sup>st</sup> Ship      | Feb 22, 2014 |
| • Launch 2 <sup>nd</sup> Ship      | ~ Aug 2014   |
| • Delivery (Lead Ship)             | Jan 15 **    |
| • Delivery (Follow Ship)           | Apr 15       |
| ** Delivery delayed by 3 months    |              |

# UNOLS- NEWEST SHIPS



R/V NEIL ARMSTRONG



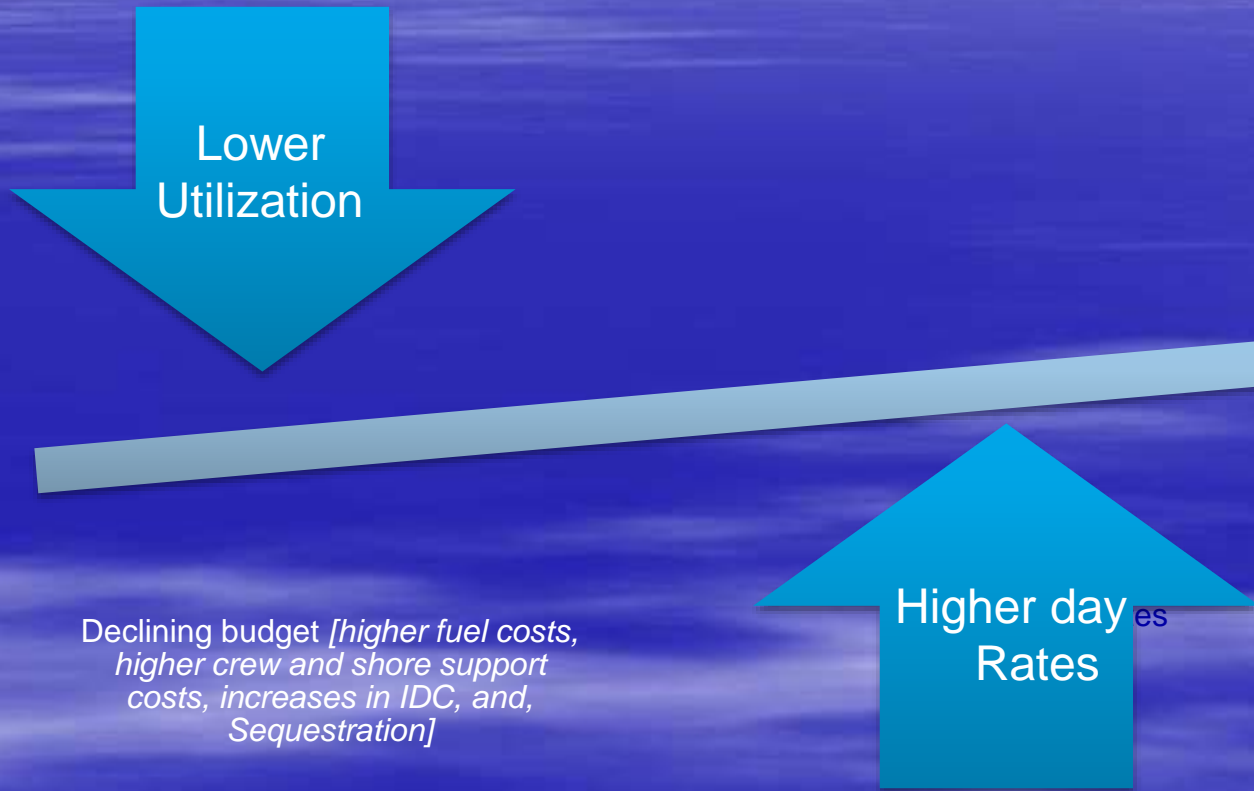
R/V SALLY RIDE



ALVIN

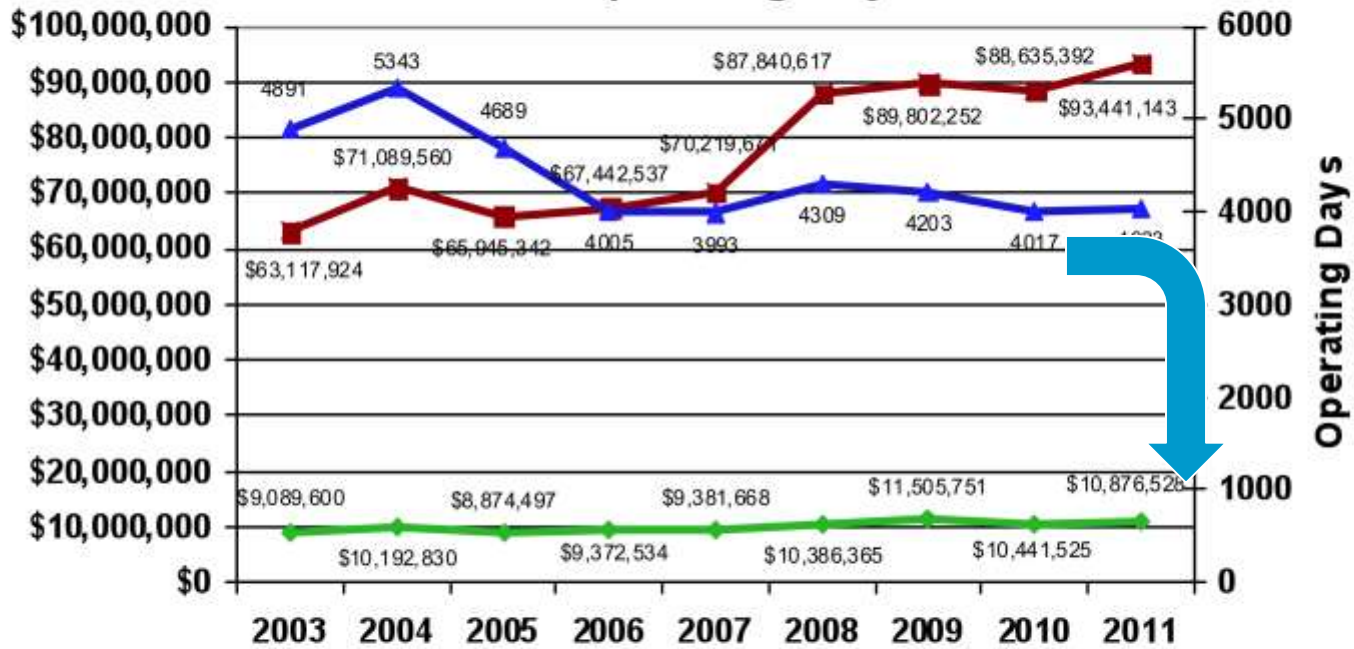


# Facts contributing Higher Ship Costs





## 2003-2011 Fleet Operating Days and Costs



■ Total Ship Op Costs   
 ◆ Total Tech Support Costs   
 ▲ Total Operating Days



# Key Features

- Variable Frequency Direct Drive
  - Flow Through
- DP-1
- Ice Class C0
- Schottel STP Twin Prop Z-Drive
- Retractable Centerboard
  - Synthetics
- Big Back deck and Van Vestibule
- Telepresence
  - EM302/2040
  - ADCP/EK60



*Thank you!*