



## Community Updates

### New Guidance Document on Chartering Non-US ARF Vessels

It has been a long time coming but we have finalized the update to the Guidance for the Use of Non-UNOLS Vessels. The new guidance document will replace Chapter 18 of the Research Vessel Safety Standards (RVSS). The soon-to-be-released new 11th Edition of the RVSS Chapter 18 will refer to this new guidance. That way the two documents will continue to be linked but an entity will not need to have the entire RVSS on the shelf to understand the basic guidelines for chartering a non-UNOLS vessel for funded science programs. Additionally, it will be easier to update this guidance document on its own when the need arises in the future. The new guidance document is available on the UNOLS Website [here](#).

### Gender Inclusive Updates to the UNOLS Cruise Planner

Consistent with our efforts to provide a welcoming, respectful environment for all cruise participants and support staff, the UNOLS Cruise Planner has been updated to collect **Name in Use** and **Pronouns** as public information. **Legal Name** and **Legal Gender** are now treated as private information. The operating institutions determine who has access to cruise participant's legal information and they are encouraged to respect the privacy of the individual and treat the information with sensitivity. It is also the responsibility of the operator to ensure that the **Name in Use** is utilized for publicly posted information such as berthing lists, muster lists, or names posted on stateroom doors.

In the UNOLS Cruise Planner, a comment line for private concerns related to shipboard sleeping arrangements, lodging or a preferred roommate has been added to the participant information section to assist the Principal Investigator to make informed berthing assignments. This change to the planner is made in response to the UNOLS community's awareness and sensitivity to gender identity. We encourage all our operators to adopt similar procedures.

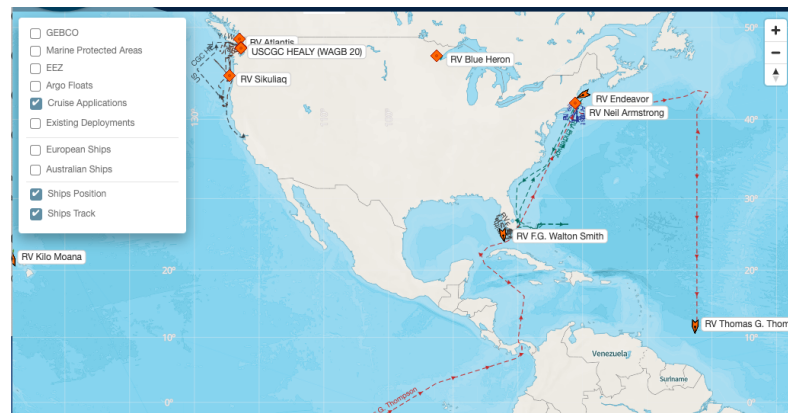
We encourage all individuals responsible for the safety, organization or mentoring of students to familiarize themselves with gender inclusion in the workplace. Some additional resources can be found below.

- [The Human Rights Campaign Foundation](#)
- [Creating a Trans-Inclusive Workplace - Harvard Business Review](#)
- [U.S. DOL Policies on Gender Identity: Rights and Responsibilities](#)
- [Gender Identity Research & Education Society](#)
- [Model Employer Policy - Transgender Law Center](#)

### Marine Facilities Planning (mfp.us) is live!

Three modules are now available in MFP, the **Science Portal**, the **Schedule Module** and the **Research Planner**.

The **Science Portal** contains the Ship-time and Equipment (SME) form where PIs will go in and enter any new requests for ship time. Any new requests for ship time will be submitted through MFP. The map in the **Schedule module** shows the current location of the fleet and, this fall will show the ship schedules. Be sure to check out the layers which include bathymetry and ship tracks among other things.



Finally, the **Research Planner** module is a super-handly map interface tool that helps to plan cruises. Stations, research areas, transects, etc can be uploaded or added directly to the map. Various aspects of the plan can be changed to meet your needs (e.g. time on station, ship speed, etc). This could be a very powerful tool to help understand how much ship time is required.

Accounts are available through [mfp.us](#). Once logged in, click the button on the upper right that looks like a building block to select a module.

Please email any feedback to [mfp@unols.org](mailto:mfp@unols.org).

### Marine Seismic Symposium

The Marine Seismology Symposium was held virtually over two weeks, March 8-19th 2021. The symposium included plenary science sessions, virtual "poster" sessions, and complementary special interest group meetings, all held via Zoom and a website-based meeting platform. Recordings from the live sessions are available on this [YouTube playlist](#). We hope to continue discussions in the community, especially topics brought up during the Justice, Equity, Diversity, and Inclusion special interest group meeting, through other upcoming conferences, meetings, and calls, including discussions facilitated by UNOLS.

*Contributed by Kasey Aderhold, Ph.D. Project Associate | IRIS TA/IS Management.*

## Committee News

### New Committee Members

All of our committees are staffed by volunteers and we are grateful for their contributions of time and experience. We would like to extend a warm welcome to our newest committee members.

- Dr. Kay McGonigal / NCSU - MERAS
- Catherine Smith / TAMU - MERAS

### THANK YOU to Outgoing Committee Members

MANY THANKS to the following individuals' contributions to the UNOLS community.

- Dr. Debbie Steinberg / VIMS - MERAS
- Dr. Clare Reimers / OSU - MERAS

### 2021 SCOAR March Monthly Meeting and Call for Nominations!

SCOAR met for another meeting on March 18, 2021. The meeting featured discussions on COVID impacts to air operations and updates from ARCUS, the NOAA Hurricane Division, and NPS-CIRPAS facility. The presentation files can be found [here](#).

The UNOLS Scientific Committee for Oceanographic Aircraft Research (SCOAR) is seeking applications and nominations to fill the Chair position that will open in Fall 2021. Experience with the use of aircraft (manned or unmanned) or coordinating the use of aircraft with other marine facilities in your research is highly desirable. In particular, individuals who have used or plan to use the aircraft facilities that are part of the Navy's Center for Interdisciplinary Remotely-Piloted Aircraft Studies (CIRPAS) and/or other academic-oceanographic airborne platforms fielded by UNOLS institutions or government agencies are desired. More information can be found [here](#).

### 2022 Ship Scheduling Committee Meetings

The Ship Scheduling Committee started meetings for development of the 2022 ARF ship schedules on 15 April, 2021 with the first 2022 Global and Ocean Class scheduling meeting. A similar kick-off meeting occurred on 20 April, 2021 for the Intermediate, Regional, Coastal and Local Class ships. Virtual meetings will continue as necessary through the spring and summer to further development of the 2022 schedules. The goal, as it is every year, is to publish schedules for the upcoming year in September. For the first time, the UNOLS Ship Schedulers are using the UNOLS MFP application to develop the 2022 ship schedules.

### 2021 RVOC Meeting

Unfortunately, there will be no spring Annual RVOC meeting in 2021 as is typically the case due to the continued impacts of COVID-19. However, UNOLS Marine Superintendents have regular Check-In virtual meetings that occur every 4-6 weeks. These meetings allow the Marine Superintendents to discuss common issues, share best practices and lessons learned, and to engage with the UNOLS Office, the funding agencies, and others. The ARF telemedicine provider, George Washington Medical Faculty Associates, has participated in several of these meetings to share important COVID-19 information that is relevant to safely conducting seagoing science during the pandemic. RVOC looks forward to returning to the annual in-person meetings in Spring 2022. In the meantime the regular Check-In meetings will continue.

## Fleet Highlights

### OSU Releases Pt. 1 of RCRV Short Documentary Series



The OSU RCRV team has released Part I of the RCRV short documentary series. You can find the teaser [here](#) and view the entire Part 1 [here](#).

### Featured Ship - R/V ENDEAVOR



photo by: Gabe Matthias

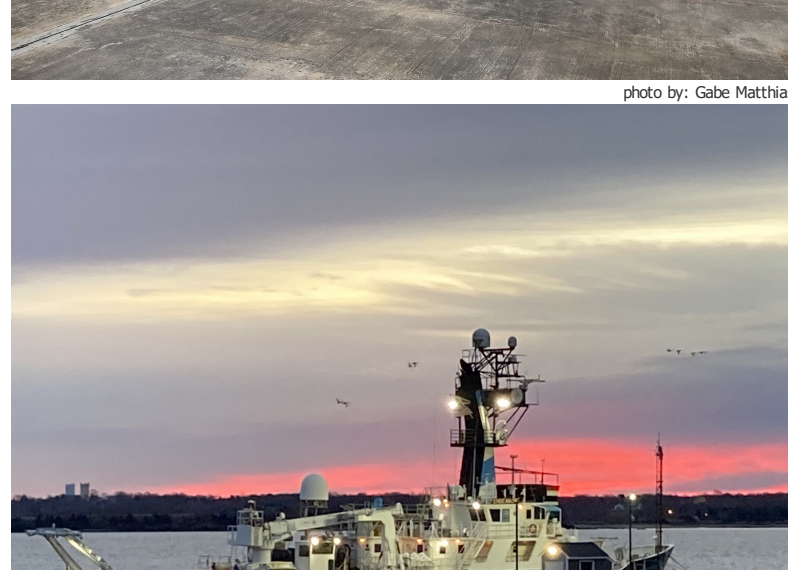


photo by: Veronica Berourinsky

**Name:** R/V ENDEAVOR

**Homeport:** University of Rhode Island, Narragansett, RI

**Year Built:** 1976

**Mid-Life Refit:** 1993

**Place Built:** Peterson Builders, Inc., Sturgeon Bay, WI

**Science Berthing:** 18

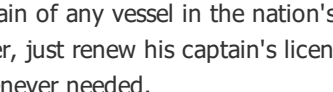
**Crew Berthing:** 12

**Owner:** National Science Foundation

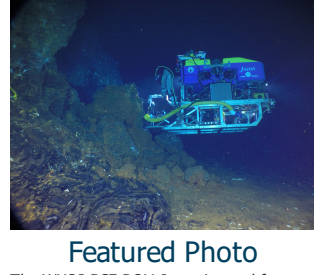
**Class of Vessel:** Ocean / Intermediate Class

Since 1976 R/V ENDEAVOR has conducted more than 500 cruises and traversed more than one million miles in support of science. The ship and it's crew are proud of the multiple efforts it has made to promote the greening of the fleet; including more efficient lighting, galley appliances, water heaters, water makers and other equipment. Additionally it was the first of the nation's academic fleet to convert its diesel-electric propulsion system to burn 5% bio-diesel.

The ENDEAVOR'S Captain Everett "Rhett" McMunn recently retired after serving as the captain for more than 30 years. He is retiring as the longest serving captain of any vessel in the nation's academic research fleet. He did however, just renew his captain's license and plans to fill in as relief captain whenever needed.



To unsubscribe from UNOLS News, please reply to this email with the word "unsubscribe" in the body. Thank you!



### Featured Photo

The WHOI-DSF ROV Jason imaged from a seafloor elevator instrumented with WHOI MISO deep-sea cameras during an April 2021 cruise (RR2102) on the SIO ship R/V R. Revelle at the East-Pacific Rise (EPR) near 9° 47'N. Image courtesy of D. Fornari - WHOI-SSS2, MISO Facility, NSF Jason team, NSF. Copyright WHOI-2021.

### Upcoming Events

Council 2021 Spring Meeting - 24, 26 May 2021

FIC 2021 Spring Meeting - date tbd, please check the unols.org website

DeSSC 2021 Spring Meeting 10, 11 June 2021

AICC 2021 Summer Meeting 17 June 2021

MSROC 2021 Summer Meeting - date tbd, please check the unols.org website

Please continue to check your email or the UNOLS website regarding the status of committee meetings.

### Did you know...



Each new cruise must have a Ship-time and Marine Equipment (SME) form submitted. Projects with multiple cruises are linked via their Multi-Cruise Project name in the Project Information section.



### SPONSORS

