

R/V *Sikuliaq* Operations



AICC meeting
18 June 2021

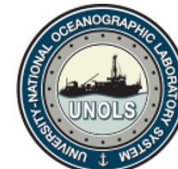
Doug Baird
Director, Seward Marine Center
CFOS, UAF



R/V *Sikuliaq*

College of Fisheries
and Ocean Sciences

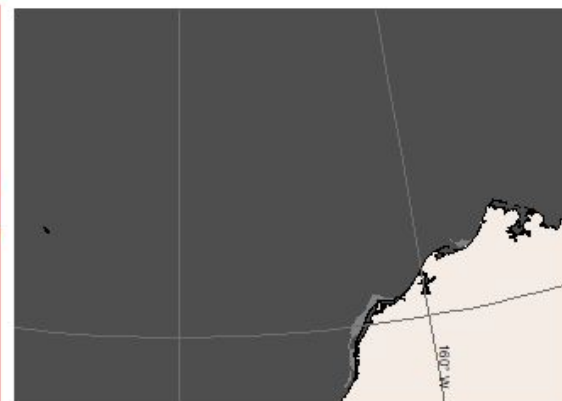
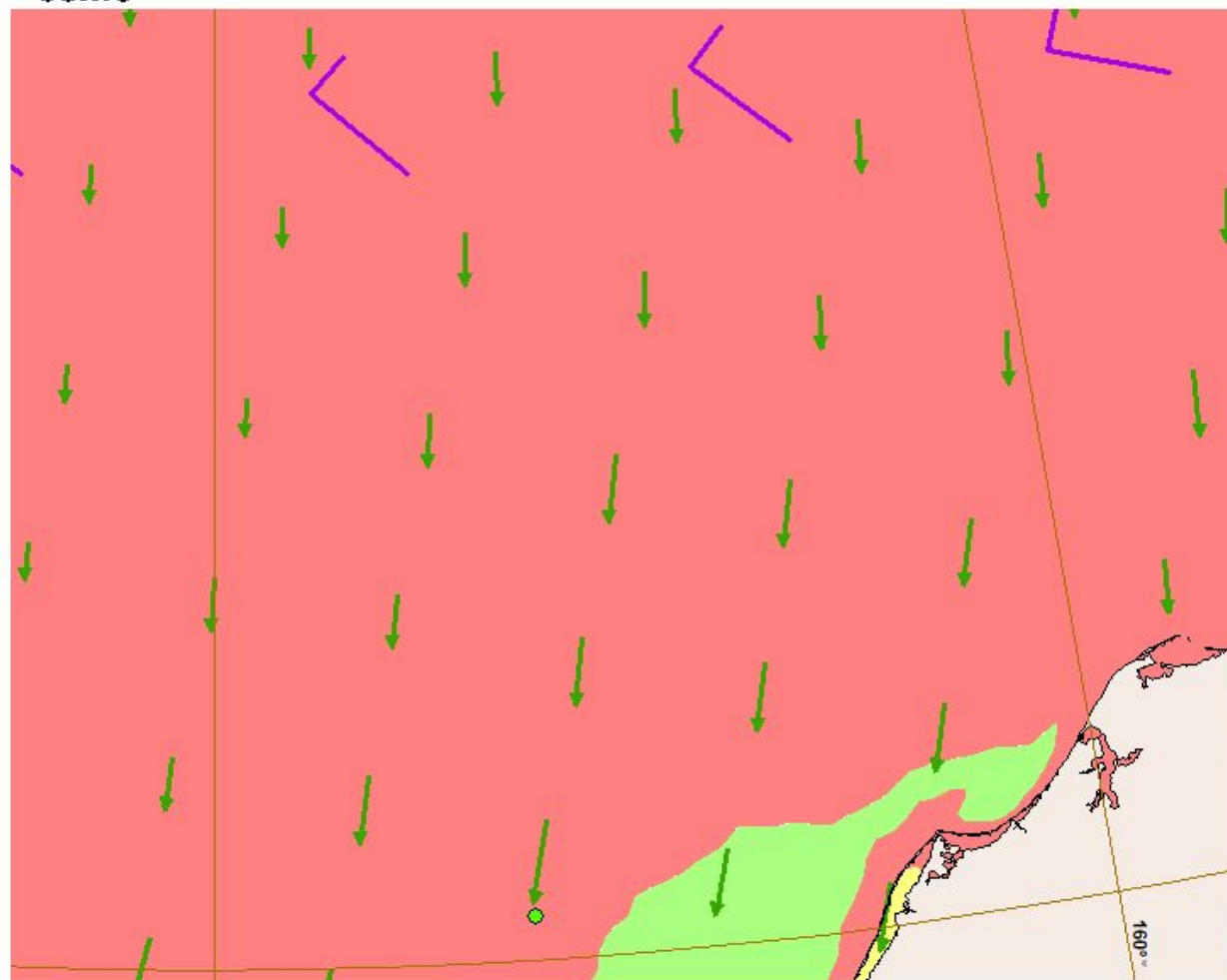
<https://www.sikuliaq.alaska.edu>





U. S. NATIONAL ICE CENTER
MISSION: NATIONAL SCIENCE FOUNDATION R/V SIKULIAQ
PRODUCED: 28 MAY 2021

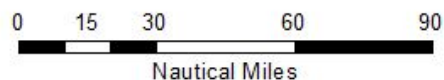
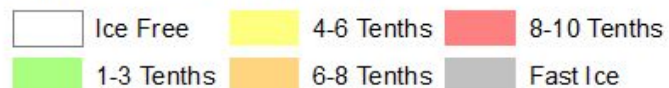
POC: USNIC CDO
301-817-3975
NIC_ANALYST@NOAA.GOV



Weekly Estimated Ice Thickness
Valid 27 MAY 2021



Daily Sea Ice Concentration



- GOFS Ice Drift Vectors Valid MAY 30 1200Z
- NAVGEN Wind Vectors Valid MAY 30 1200Z
- Ice Edge Forecast Valid MAY 30 1200Z
- R/V SIKULIAQ Valid MAY 28 1200Z

Coordinate System: WGS 1984 Stereographic North Pole
Projection: Stereographic North Pole
Datum: WGS 1984

R/V Sikuliaq in Chukchi Sea Ice (May 2021)



R/V Sikuliaq – Chukchi Sea Ice Station (May 2021)





R/V Sikuliaq

**College of Fisheries
and Ocean Sciences**

<https://www.sikuliaq.alaska.edu>

