

New Water Sampler Valve

...high opening ratio and inert material...

Edwin Keijzer

presenting member of the water sampler valve project team

employee of the instrumentation department



Royal Netherlands Institute for Sea Research



The scientific need

Drawbacks in the standard systems:

- restricted refreshment rate (opening ratio)
- closing control uncertainties
- breakable materials
- contaminating materials
- user unfriendly preparation.

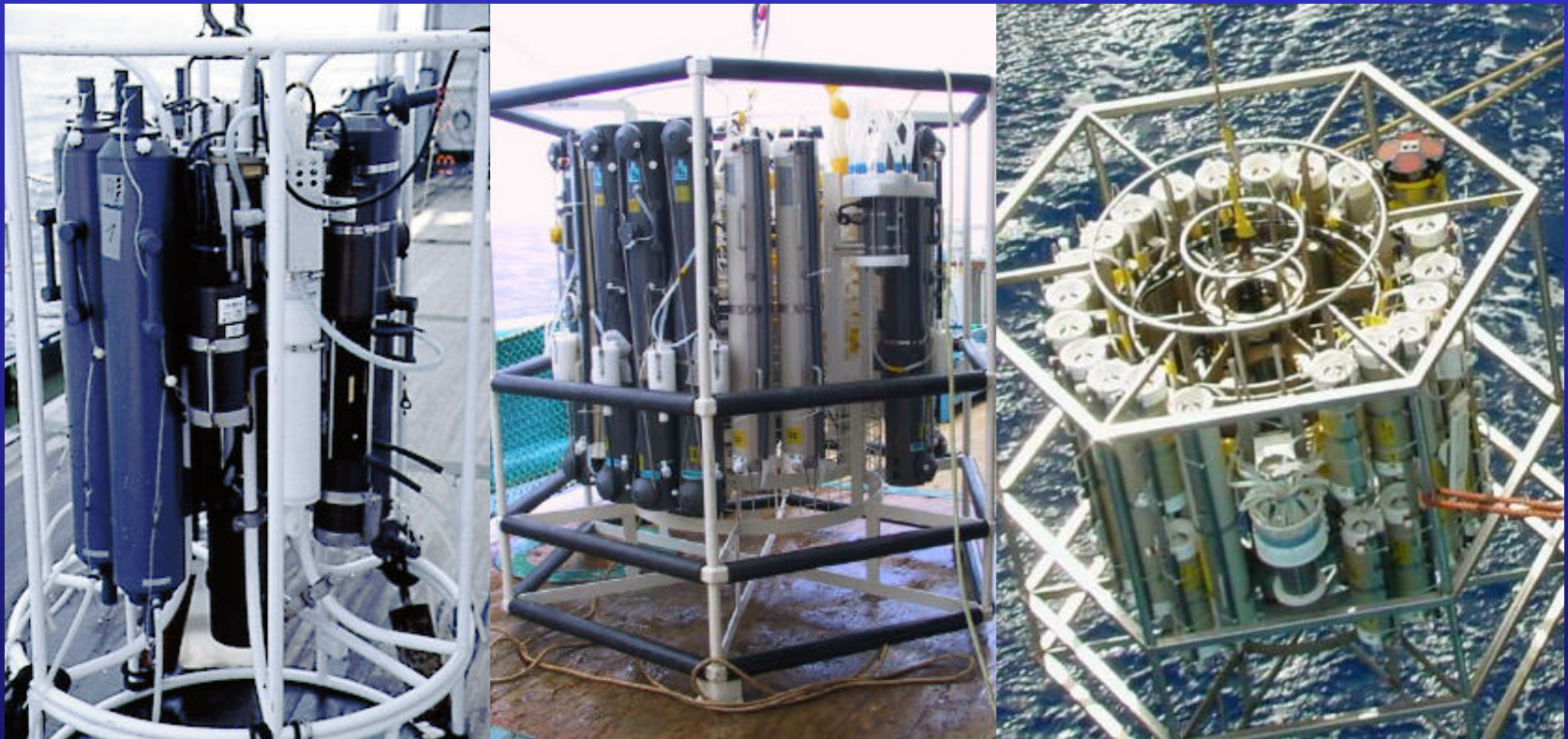


The technical challenge

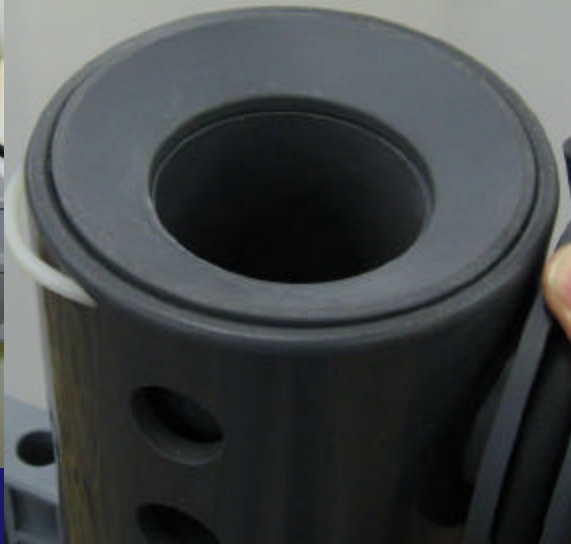
To get a valve which:

- has a good hydrodynamic behavior
- made of a contaminating free material
- enables hands free preparation
- closes from the inside out
- can pass the surface in a closed position
- is constantly reliable

The standard systems



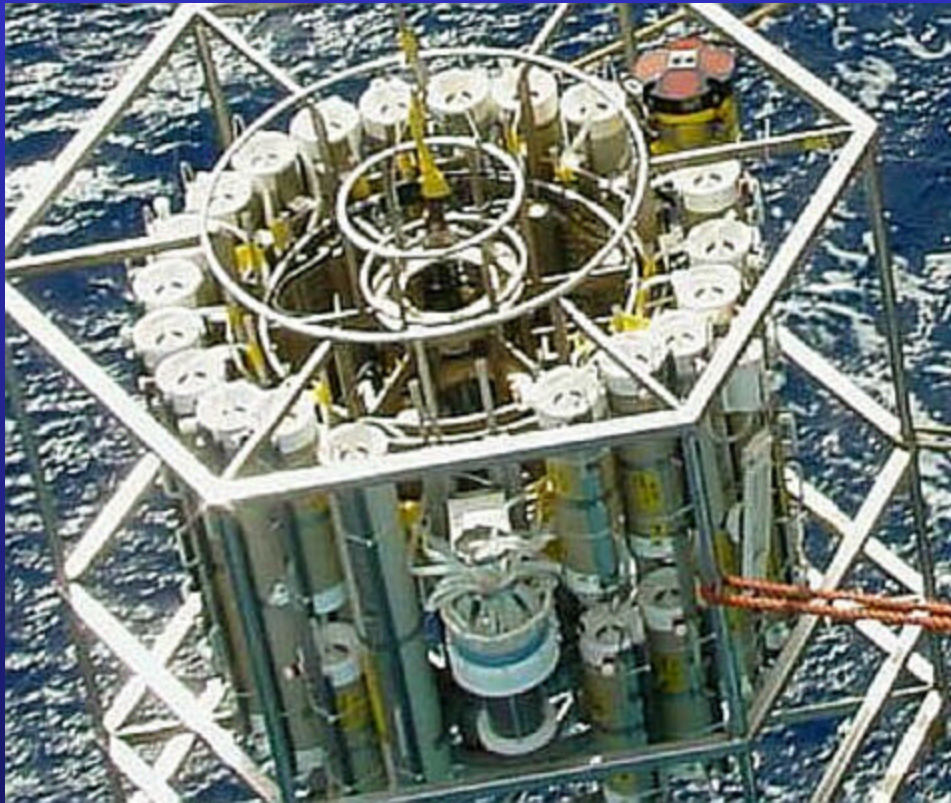
Closing controls



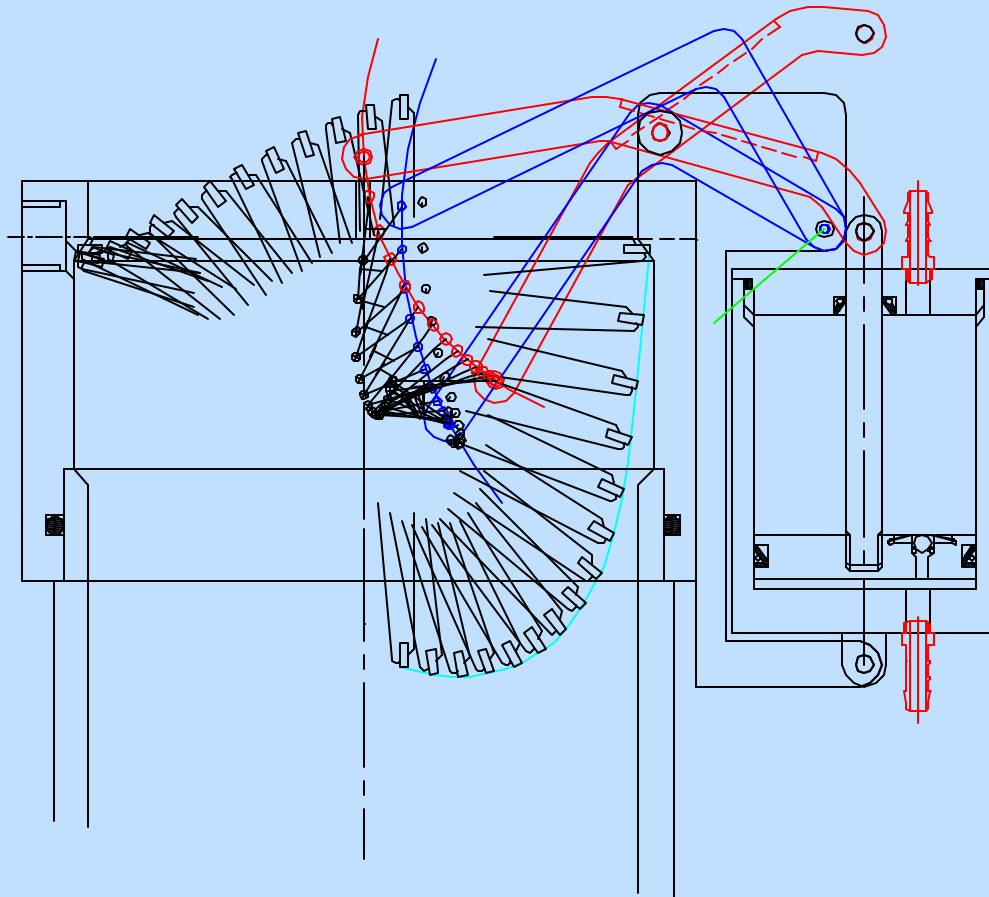
Preparation trouble



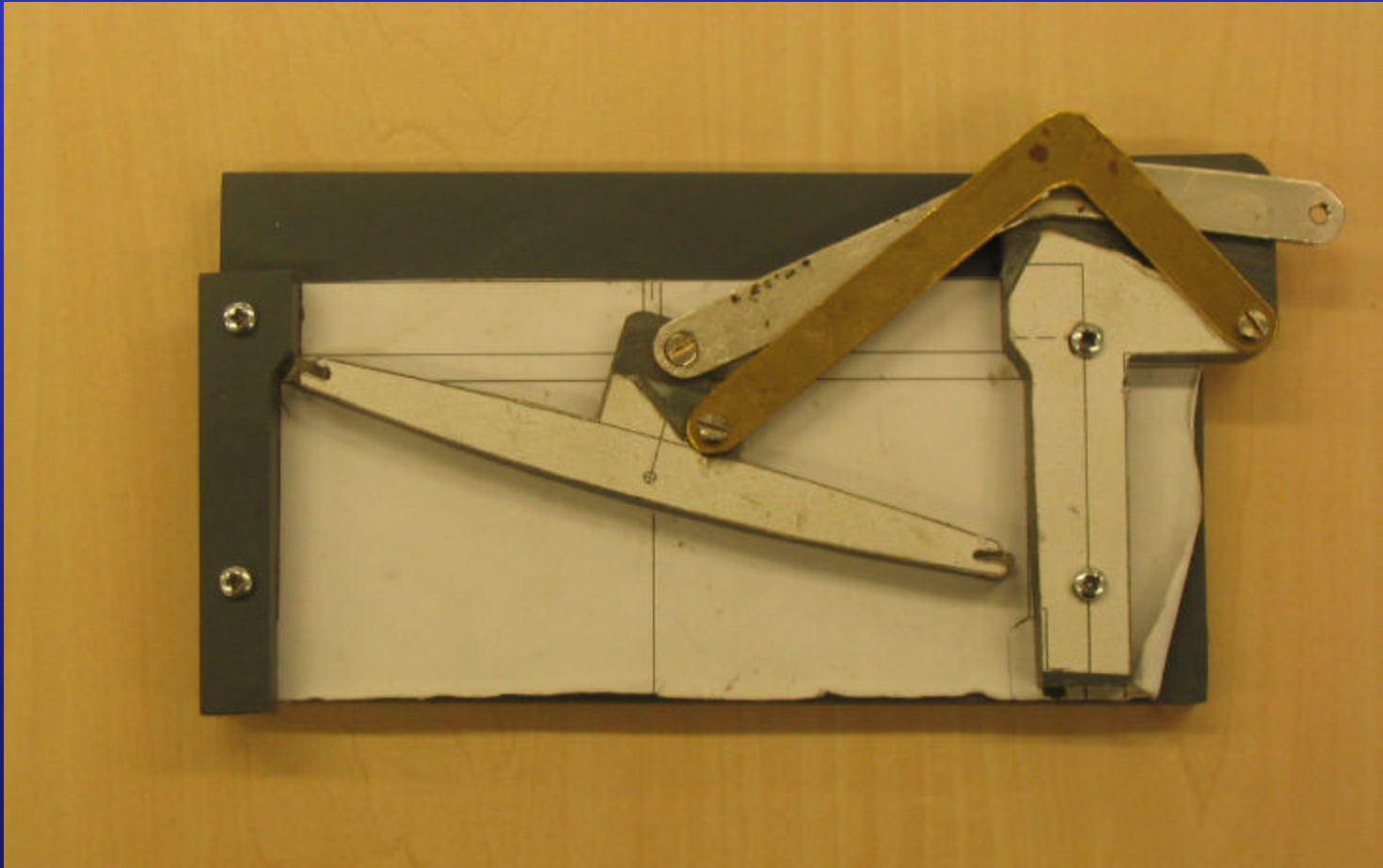
Preparation ease



Improved closing controls

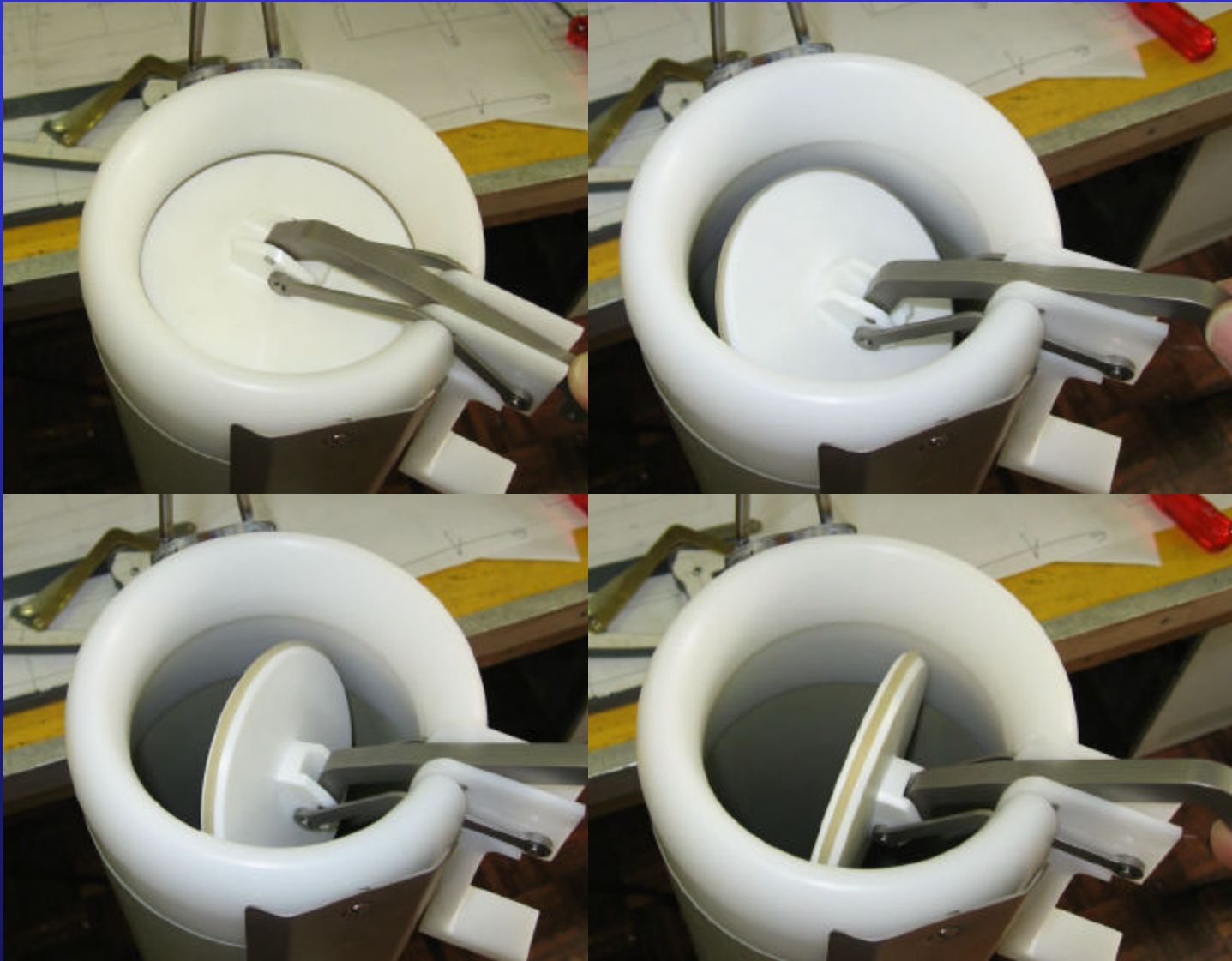


Improved closing controls



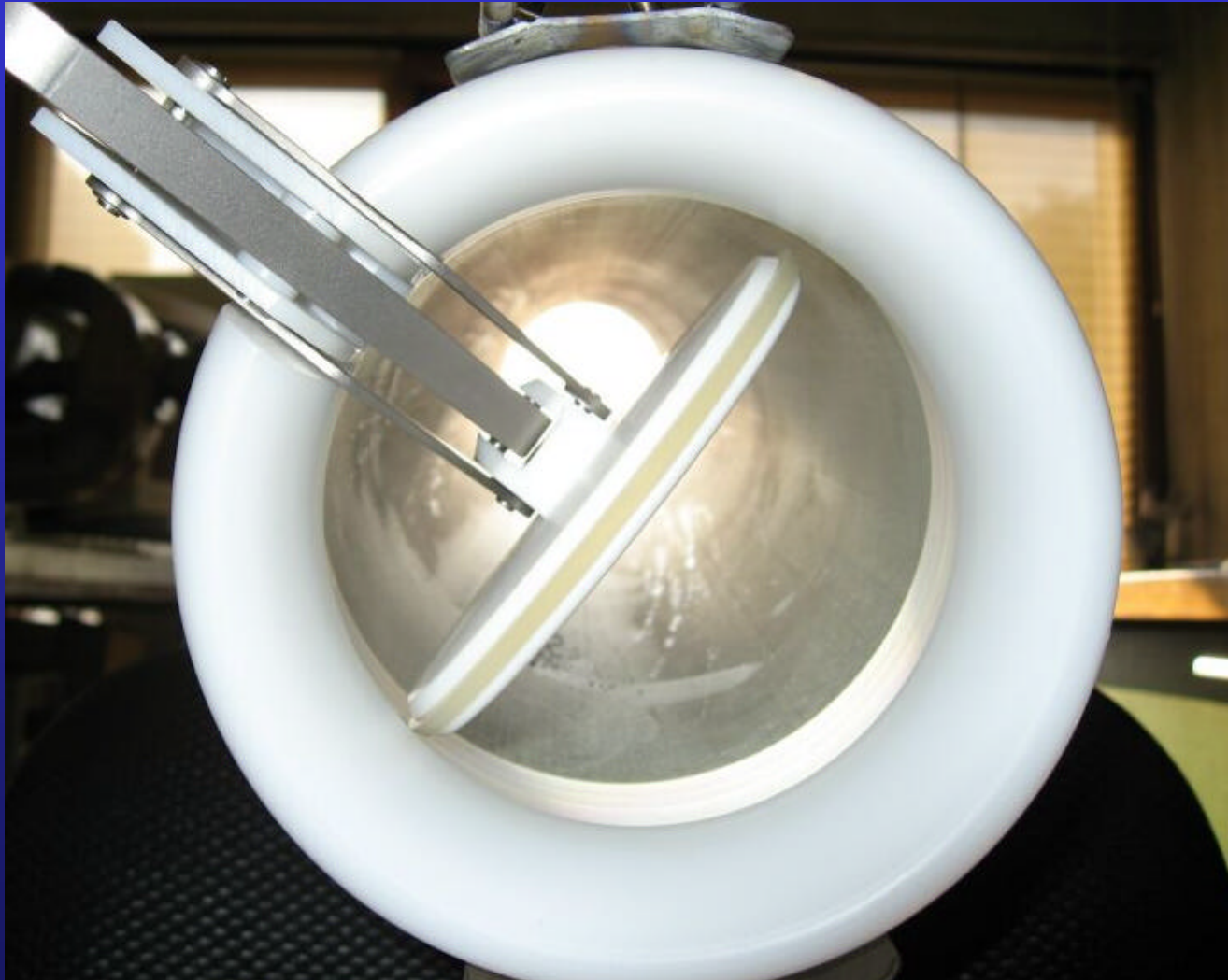


Improved closing controls





High opening ratio





Questions/discussion



