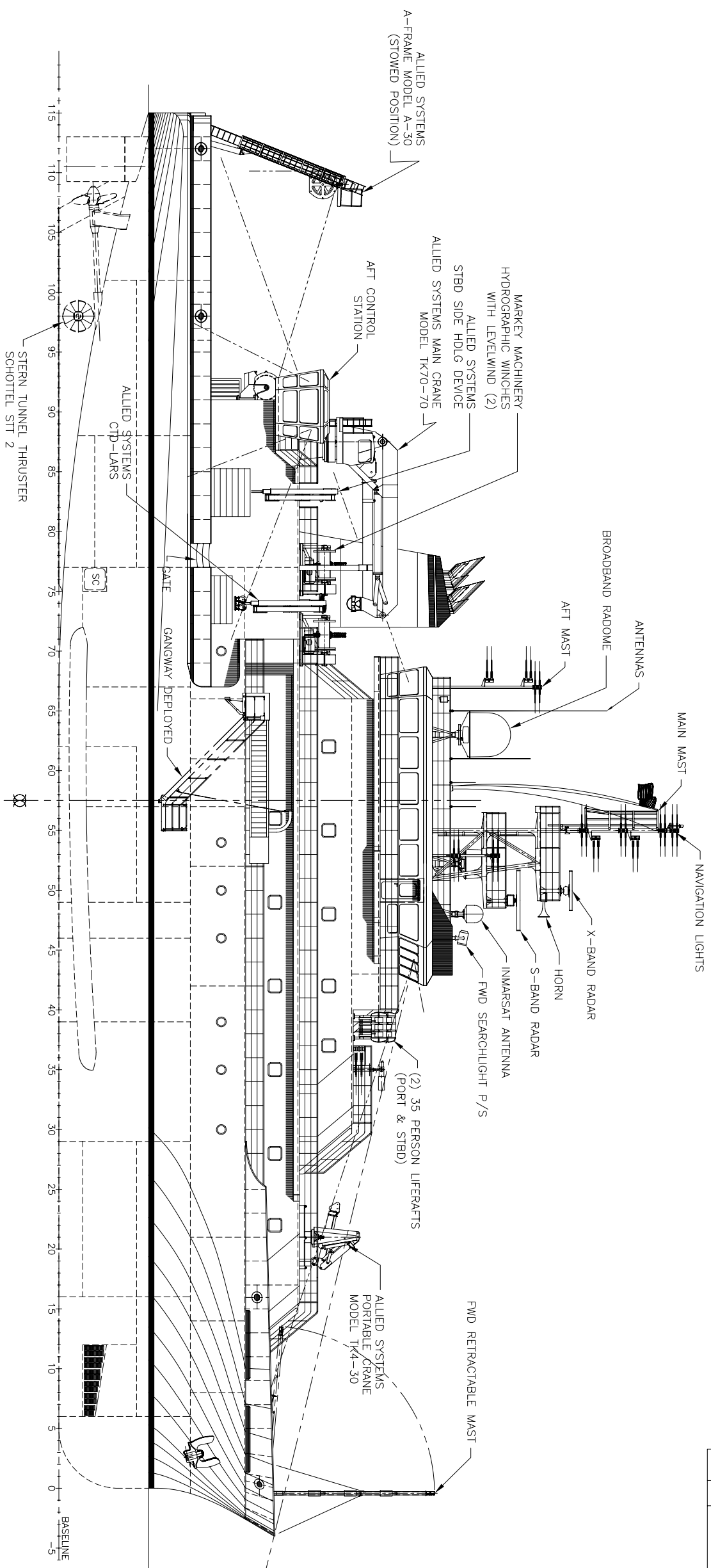


NAVEA DISTRIBUTION STATEMENT A: APPROVED  
FOR PUBLIC RELEASE; DISTRIBUTION UNLIMITED

ZONE	REV.	DESCRIPTION	DATE	APPROVED
ALL	A	1. REVISED COMPARTMENT NAMES TO PROVIDE UNIQUE IDENTIFIERS; 2. RELOC PHSE CONSOLES TO SUIT PANAMA CANAL; 3. RELOC COFFEE MESS TO SUIT STATUS BOARD; 4. REV TRASH/INCINERATOR RM. 5. DEL OFFICE, MNDK STBD, RELOC MESS HEAD TO PASSAGE STBD. 6. REV MESS SEATING; 7. FOCISLE DK FWD, REV LKR DOOR LOCATION 8. 1ST PLATF, REV MCHRY FLAT STBD. 9. HOLD & 1st PLATF, REV FO WING TK 1, DIAG BHD P/S AT BHD 29 FROM 9'-11" TO 9'-6" OOL.	MSH 1/16/12	CC

REVISIONS



VESSEL CHARACTERISTICS

(APPROXIMATE)

LENGTH OVERALL	= 238'-0"
WATERLINE LENGTH	= 230'-0"
RULE LENGTH	= 220'-9.6"
MAXIMUM BREADTH (MOLDED)	= 50'-0"
DEPTH TO MNDK	= 22'-0"
DESIGN DRAFT	= 15'-0"
SCANTLING DRAFT	= 17'-0"
DESIGN SPEED	= 12 KNOTS

VESSEL CAPACITIES

(APPROXIMATE)

FUEL OIL @ 98%	= 145,619 GALS (INCL DAY TKS)
FUEL OIL DAY TANKS @ 98%	= 8,000 GALS
FUEL OIL OVERFLOW TK @ 98%	= 2,297 GALS
POTABLE WATER @ 100%	= 14,604 GALS
BALLAST @ 100%	= 147,512 GALS
ANTI-ROLL TANK @ 100%	= 7,917 GALS
SEWAGE HOLDING @ 98%	= 4,223 GALS
TREATED SEWAGE HLDG TK @ 98%	= 11,955 GALS
WASTE OIL TANK @ 98%	= 5,177 GALS
OILY BILGE TANK @ 98%	= 5,497 GALS

ACCOMMODATIONS:

(20) SINGLE STATEROOMS
(12) DOUBLE STATEROOMS
(1) SINGLE HOSPITAL

BULKHEAD LEGEND

WATERTIGHT/AGO BHD
NT STEEL BHD
JOINER BHD

PROPUSSION MOTORS:

- (2) SIEMENS AC MOTORS RATED FOR 876 kW EA @ 200 RPM
- (4) MTU 8V4000 M33/AVK DSG RATED FOR 1,040 kW EA @ 1800 RPM
- (1) KOHLER 180EOZC RATED FOR 180 kW @ 1800 RPM
- (1) WHITE GILL 4073S MK-V-OR, RATED FOR 686 kW @ 677 RPM
- (1) SCHOTTEL STT 2 FP RATED FOR 620 kW @ 1470 RPM

CLASS NOTATION:

ABS XA1, XAMS, XACCU, NIBS, ICE CLASS DO, UWILD, OCEANOGRAPHIC RESEARCH VESSEL, UNRESTRICTED SERVICE

1. 54308-171-01	MAST & FLAGSTAFF DWG
2. 54308-422-01	NAVIGATION LIGHTS

DWG	TITLE
58	GENERAL ARRANGMENT PROFILE

DESIGNER	GUIDO PERLA & ASSOCIATES, Inc.
701 15TH AVENUE, SUITE 1200 SEATTLE, WA, 98104, U.S.A.	
Tel: (206) 768-1515 Fax: (206) 768-9700 Email: gpa@gpa.com	

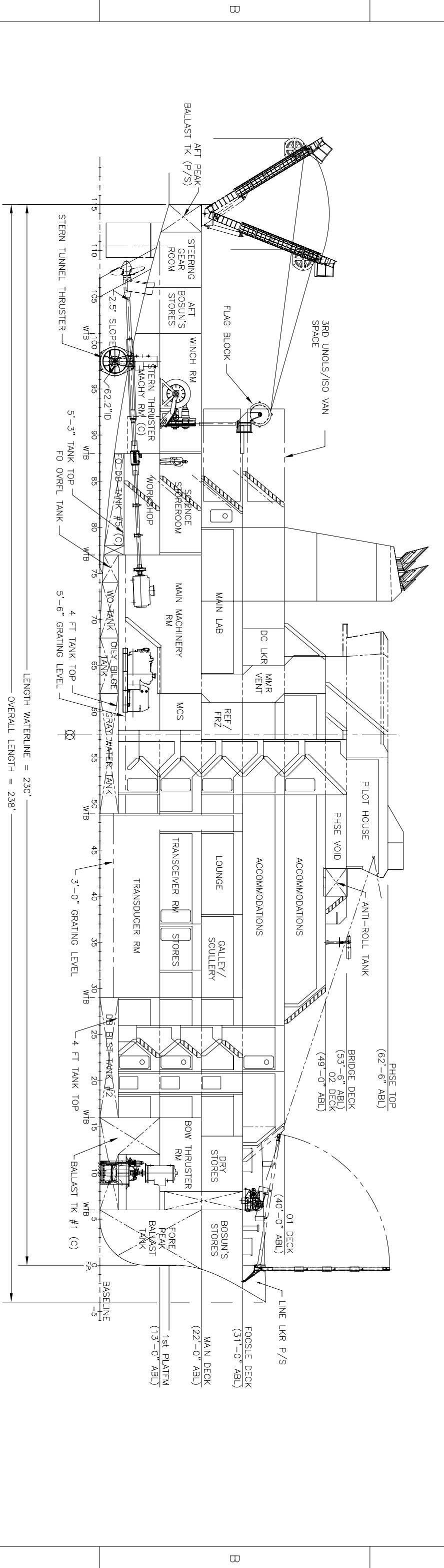
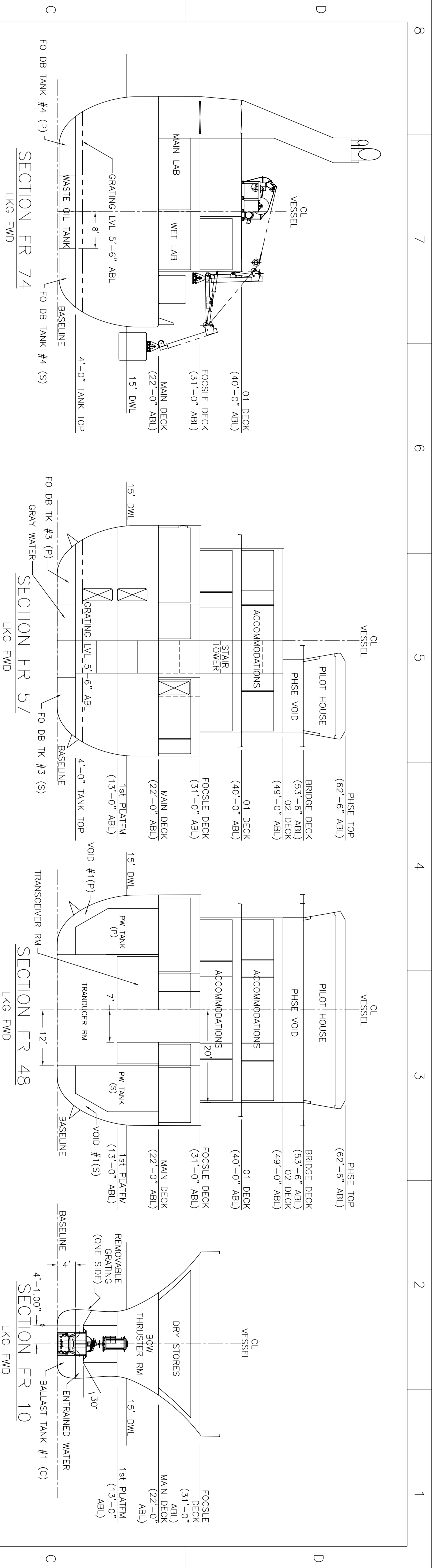
SUPPLIER	DAKOTA CREEK INDUSTRIES, Inc.
620 FOURTH STREET, P.O. BOX 218 WASHINGTON, WA, 98221	
Tel: (360) 283-9575 Fax: (360) 283-9453	

PROJECT	OCEAN CLASS AGOR
TITLE	GENERAL ARRANGMENT PROFILE

DATE	04/20/10
DATE	04/20/10
DATE	

SCALE	3/32" = 1'-0"
SHEET	1 OF 6

REV.	A
------	---

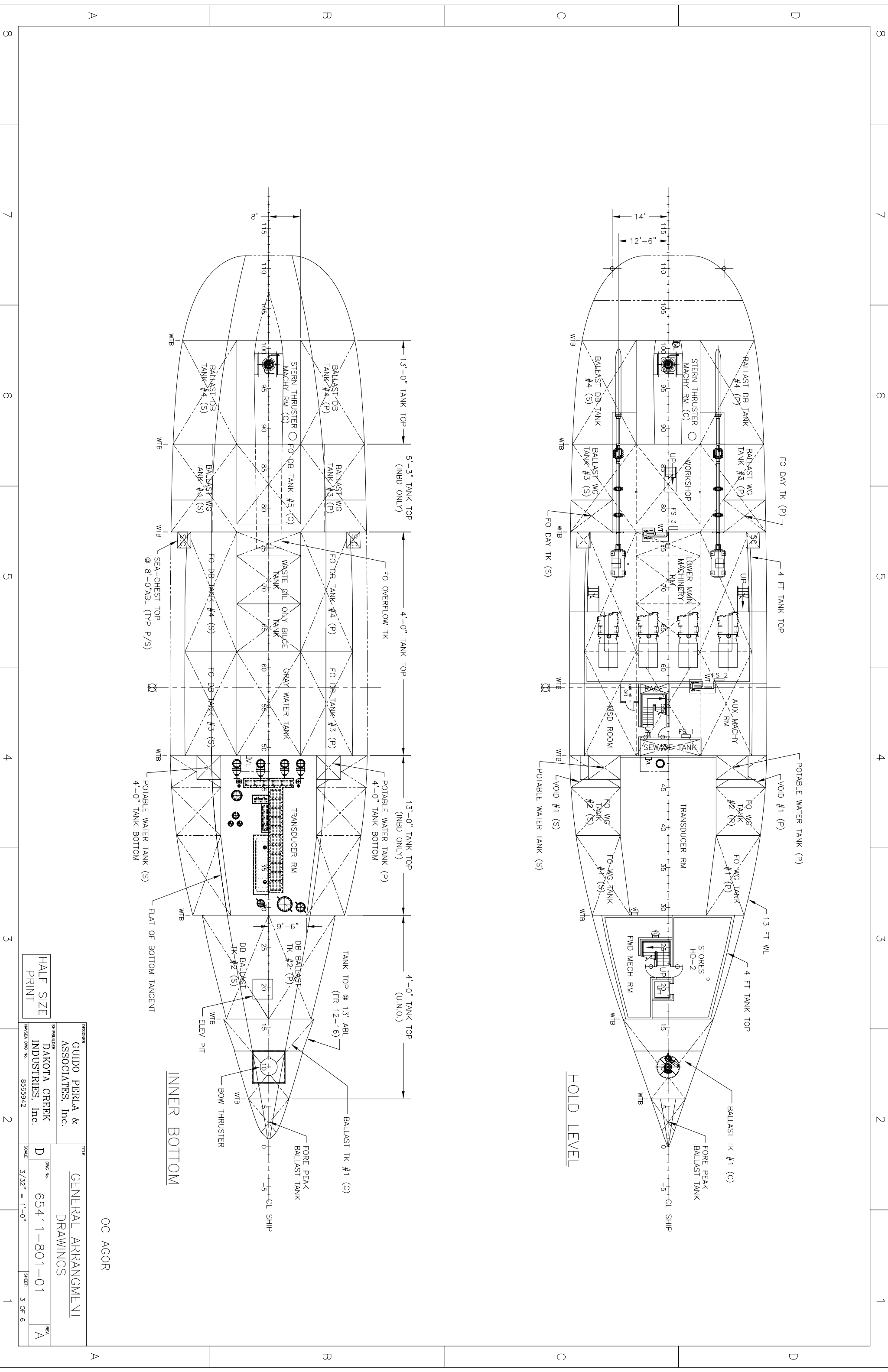


**INBOARD PROFILE**  
 FRAME SPACING 24" THROUGHOUT  
 OC AGOR

DESIGNER	GUIDO PERLA & ASSOCIATES, Inc.	TITLE	GENERAL ARRANGMENT SECTIONS
SUPPLIER	DAKOTA CREEK INDUSTRIES, Inc.	DWG No.	65411-801-01
ANSI/DWG No.	8565942	SCALE	3/32" = 1'-0"
		SHEET	2 OF 6
		REV	A

HALF SIZE  
 PRINT

A 8 7 6 5 4 3 2 1



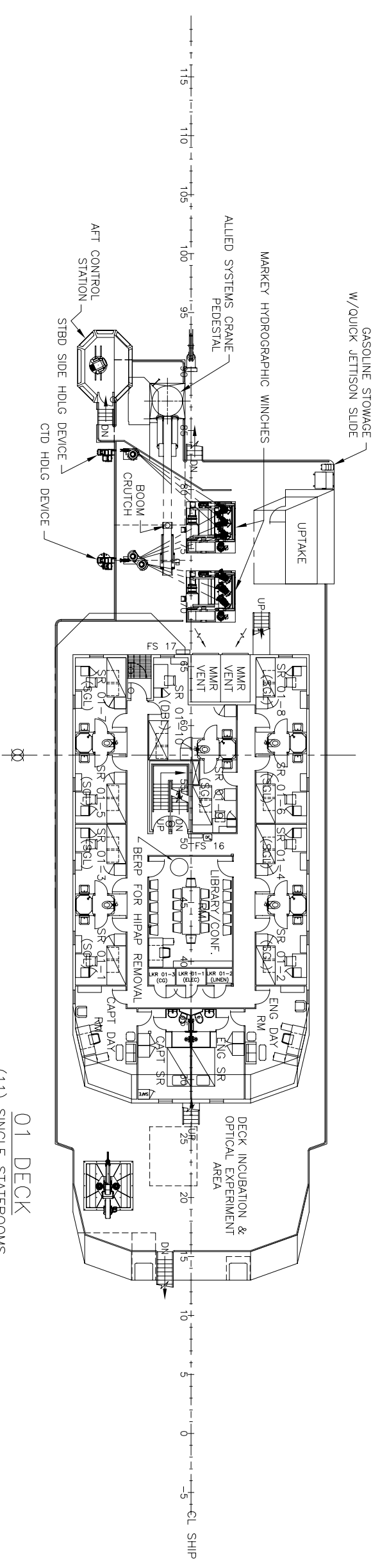
OC AGOR

GENERAL ARRANGMENT DRAWINGS

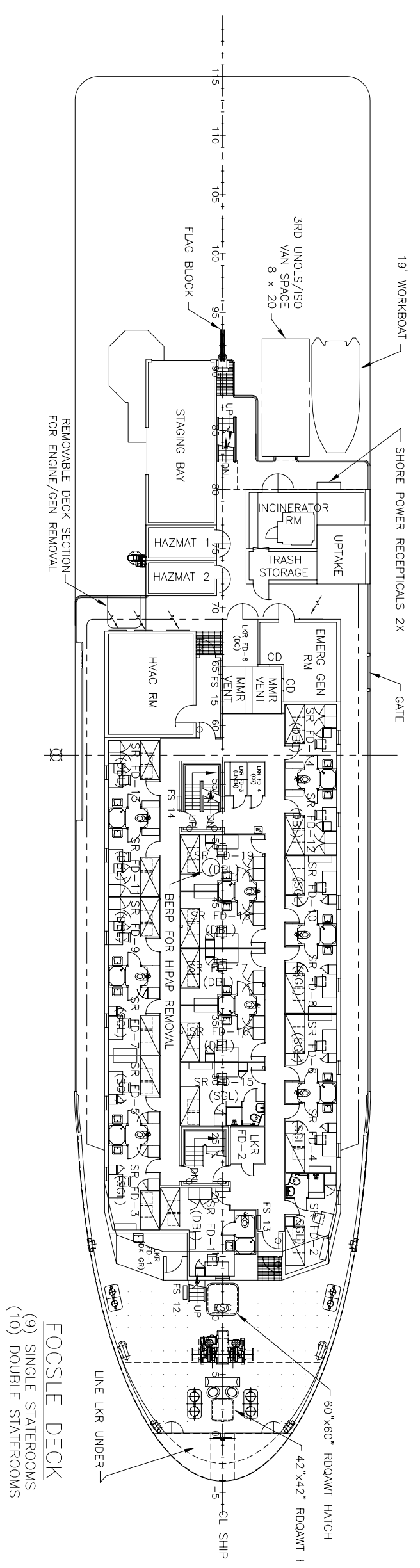
DESIGNER	GUIDO PERLA & ASSOCIATES, Inc.	TITLE	GENERAL ARRANGMENT DRAWINGS
SUPPLIER	DAKOTA CREEK INDUSTRIES, Inc.	DWG No.	65411-801-01
SCALE	3/32" = 1'-0"	SHEET	3 OF 6
ANSI DWG No.	8565942	REV	A

HALF SIZE PRINT





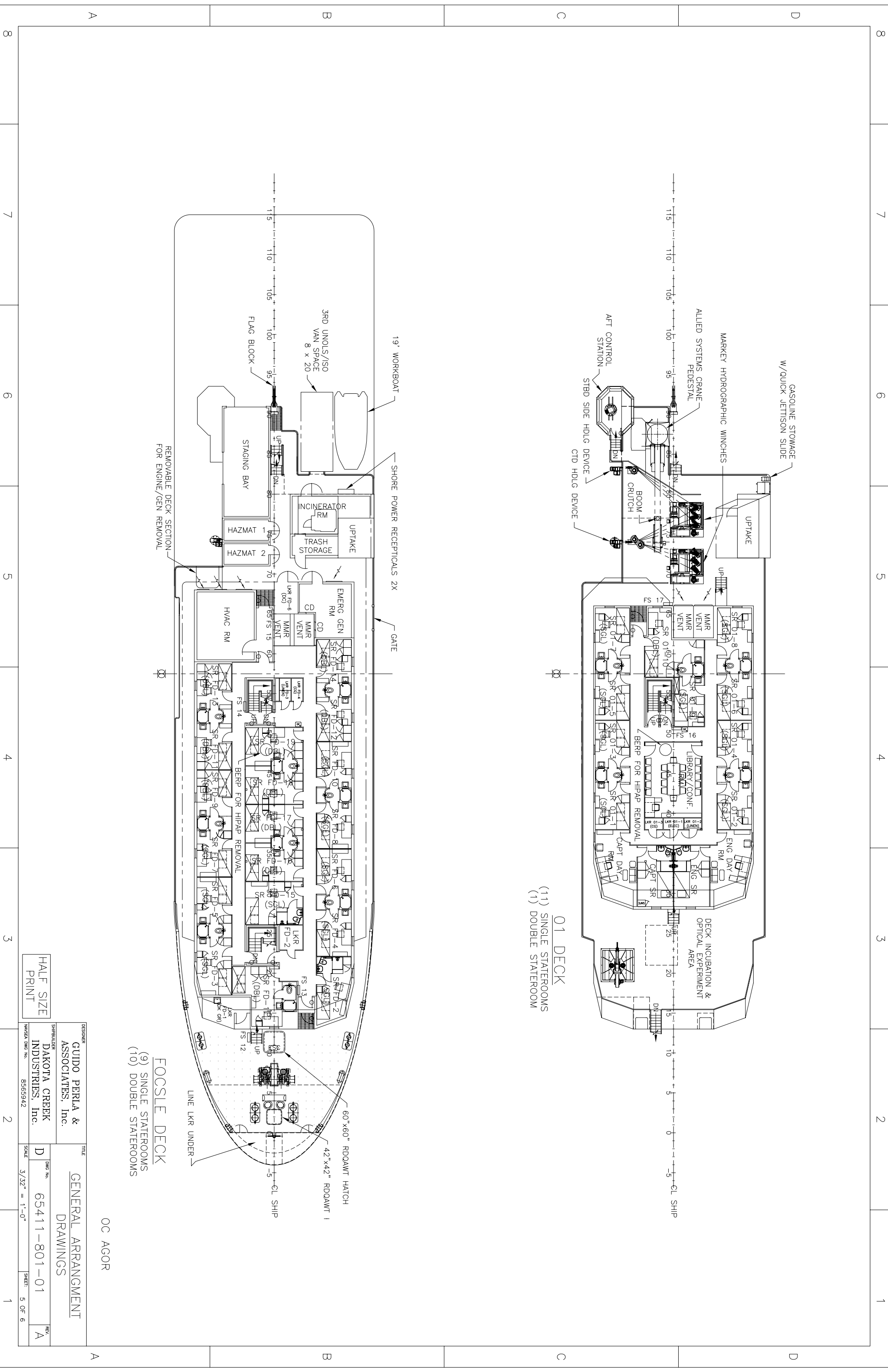
01 DECK  
 (11) SINGLE STATEROOMS  
 (1) DOUBLE STATEROOM

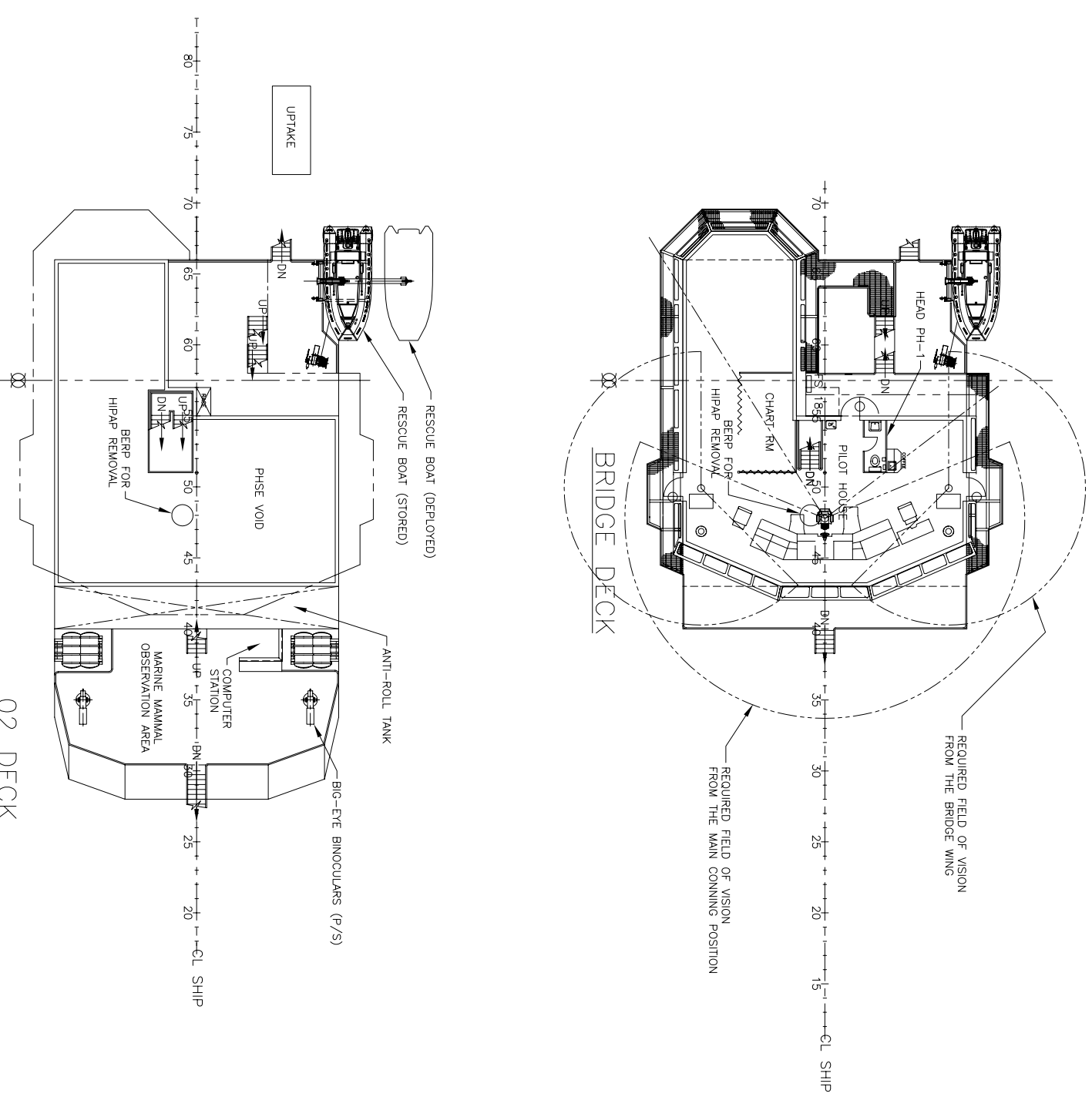


FOCSLE DECK  
 (9) SINGLE STATEROOMS  
 (10) DOUBLE STATEROOMS

OC AGOR

DESIGNER	GUIDO PERLA & ASSOCIATES, Inc.	TITLE	GENERAL ARRANGMENT DRAWINGS
SUPPLIER	DAKOTA CREEK INDUSTRIES, Inc.	DWG No.	65411-801-01
NAVSEA DWG No.	8565942	SCALE	3/32" = 1'-0"
		SHEET	5 OF 6
		REV	A





02 DECK

OC AGOR

DESIGNER GUIDO PERLA & ASSOCIATES, Inc.		TITLE GENERAL ARRANGMENT DRAWINGS	
DRAWING NO. 65411-801-01		SCALE 3/32" = 1' - 0"	
SHEET: 6 OF 6		REV. A	
DRAFTSMAN DAKOTA CREEK INDUSTRIES, Inc.		PROJECT NO. 8565942	

HALF SIZE  
PRINT