

CPS Ship Support

Dr. Karl Newyear, UMIAQ Chief Scientist

Anna Schemper, PFS Science Project Manager



AICC Meeting Seattle, WA November 2014

Who is CH2MHill Polar Services?



How does CPS integrate with ship support?



STARC & ESU



2014 Activities Relevant to AICC

- No logistics stopovers for *HEALY* in Barrow
- Hired Community Observer for 2 USCG cruises
 - HLY1401: Arrigo
 - HLY1402: Pickart
- Coordinated with AEWC and BWCA
 - Provided ground support for group disembarking from CCGC *LAURIER* and embarking onto CCGC *AMUNDSEN*

Community Observer Program

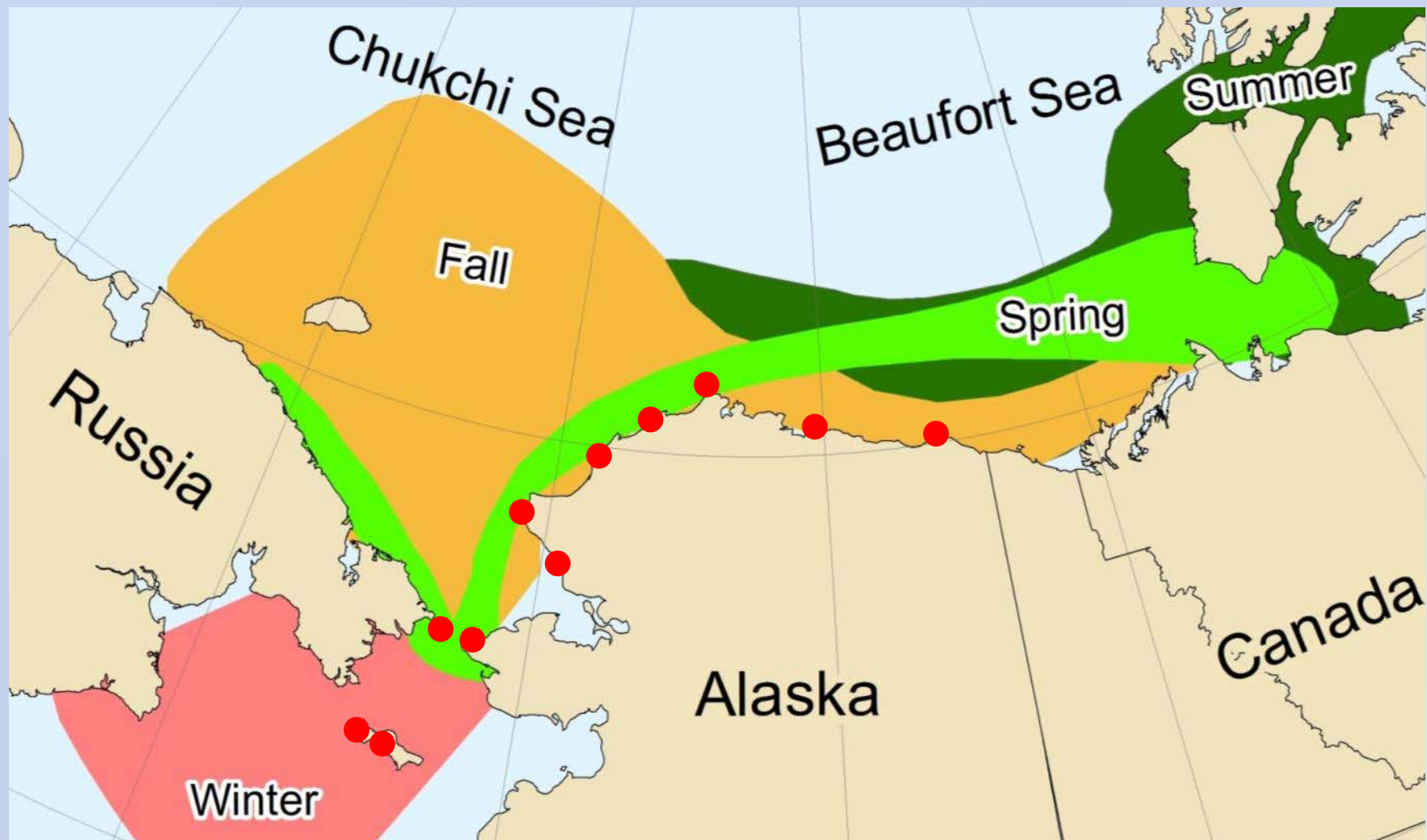
Core Duties

- Communicate with native communities to avoid potential conflict
- Heighten cultural awareness of researchers and crew
- Share science with native communities



AEWC and BWCA

- Subsistence whaling occurs in many North Slope villages, sanctioned by IWC
- UMIAQ has relationship with AEWB and BWCA



ODEN



- Personnel exchange supported via small craft (61 disembarking, 58 embarking) in half a day
- 42', drop gate, 20 pax COI
- Limited provisions delivered to *ODEN*
- US Customs clearance in Barrow



UNĀLAQ



- New ship, homeported in Anchorage
- 150' landing craft design
- May be available for science, logistics stopovers

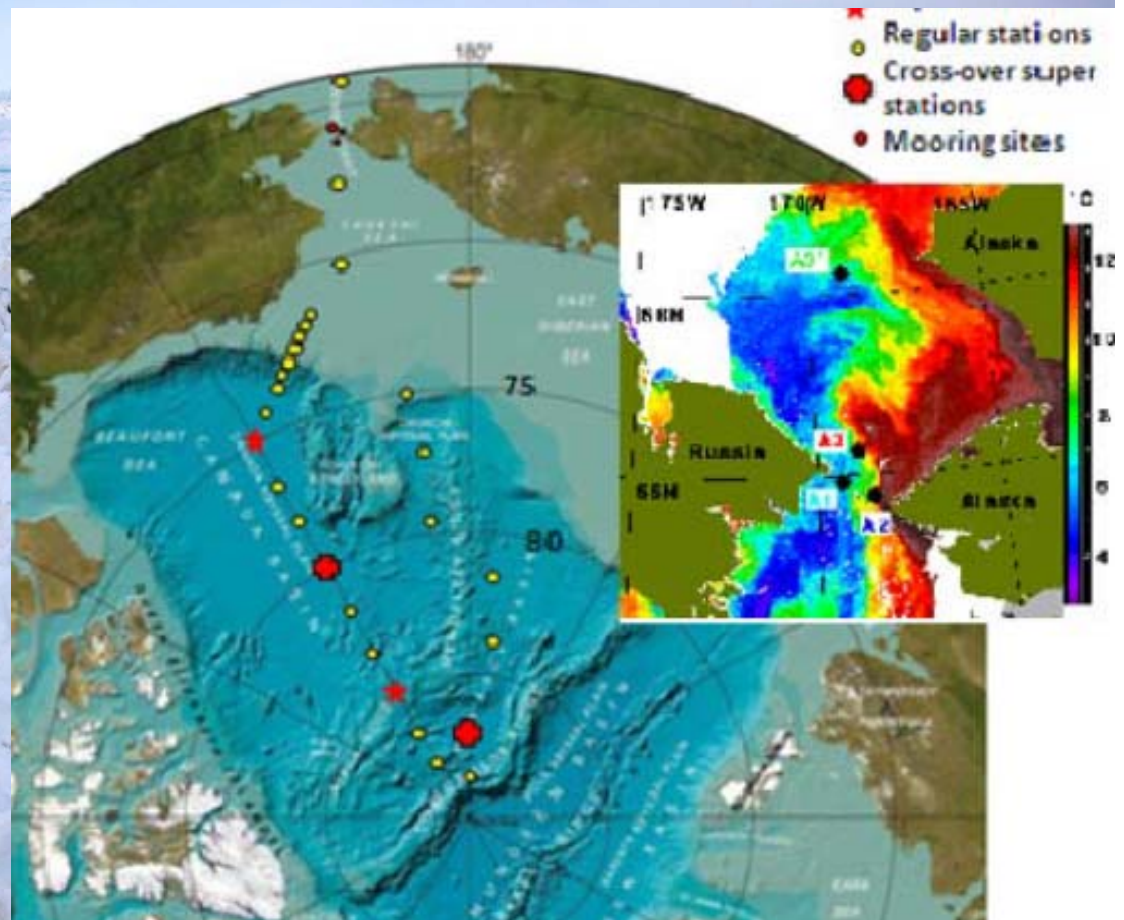
2013 Lookback

- 2 logistics stopovers in Barrow
- Personnel transfers via helicopter and large landing craft
- External challenges: food storage, *ARAON* helo, lodging



Kadko-GEOTRACES

- Aug 7 - Oct 12
- MOB/DEMOB out of Dutch Harbor
- Potential equipment transfer from RUSALCA offshore of Nome
- Participation of Community Observer TBD pending discussions with AEWC
- CPS to assist with community outreach
- CPS to subcontract field engineer support from APL-PSC



Helicopter vs. Vessel

	Pro	Con
Helicopter	<ul style="list-style-type: none">•Familiar process•<i>HEALY</i> has helo deck•Training opportunity for ship's crew•Potentially less expensive than vessel depending on vessel size/availability	<ul style="list-style-type: none">•Expensive day rate•Mobilization from FAI or ANC•Weather dependent (fog, wind)•USCG regulation on swell size can impact ops•Few pax per trip – time consuming
Vessel	<ul style="list-style-type: none">•Unaffected by fog•Potentially less expensive depending on vessel size/availability•Possible mobilization from Prudhoe•Larger pax load per trip than helo- quick	<ul style="list-style-type: none">•Dependent on calm seas•Requires ladder from ship•Large difference in deck heights•Availability, schedule, and cost have been issues•Competition with industry

A photograph of a sunset over a body of water. The sun is a bright, glowing orb on the horizon, casting a warm orange and pink glow across the sky. The water is a deep blue, and a long bridge is visible in the distance. The overall mood is peaceful and serene.

Questions?

Quyanakpak
(Thank You)