

ional Class Research Vessel

s update for the RVOOC

nted by Stewart Lamerdin
J Marine Superintendent

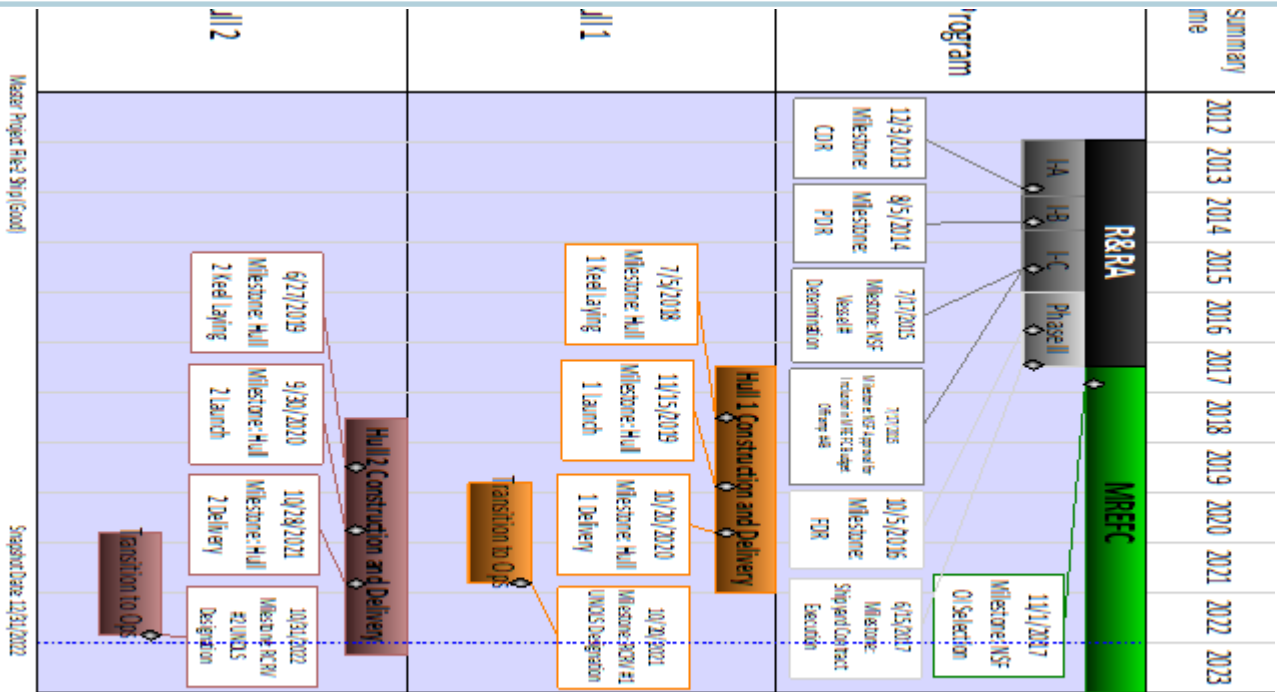


Vessel Description

- Large
 - Adaptable
 - Customizable
 - Accessible
 - Matable
 - OHS
 - TM's
- Dynamic Positioning with two stern and two bow thrusters
 - U-Tube, Ctr Board, Fins, Beam
 - Wide suite of SONAR options
 - Double articulated Frames
 - As strong a crane as stability allows
 - Miranda Style Davit for small boat launches
 - Acoustically Quiet
 - Virtual Participation through Data/Telepresence

• Versatile • Capable • Efficient • Desirable

Integrated Master Schedule



Shipyard Selection Timeline

1. OSU Issue Request for Information Mid-2016
 - Vendor Responses Received Mid-2016
2. OSU Issue Request for Qualifications & Technical Proposals Mid-2016
 - Vendor Responses Received Late-2016
3. OSU Issue Request for Cost Proposals Late-2016
 - Vendor Responses Received Early-2017
4. Shipyard Selected Early-2017
5. Shipyard Contract Effective Mid-2017

Key for Anticipated Timeline References:

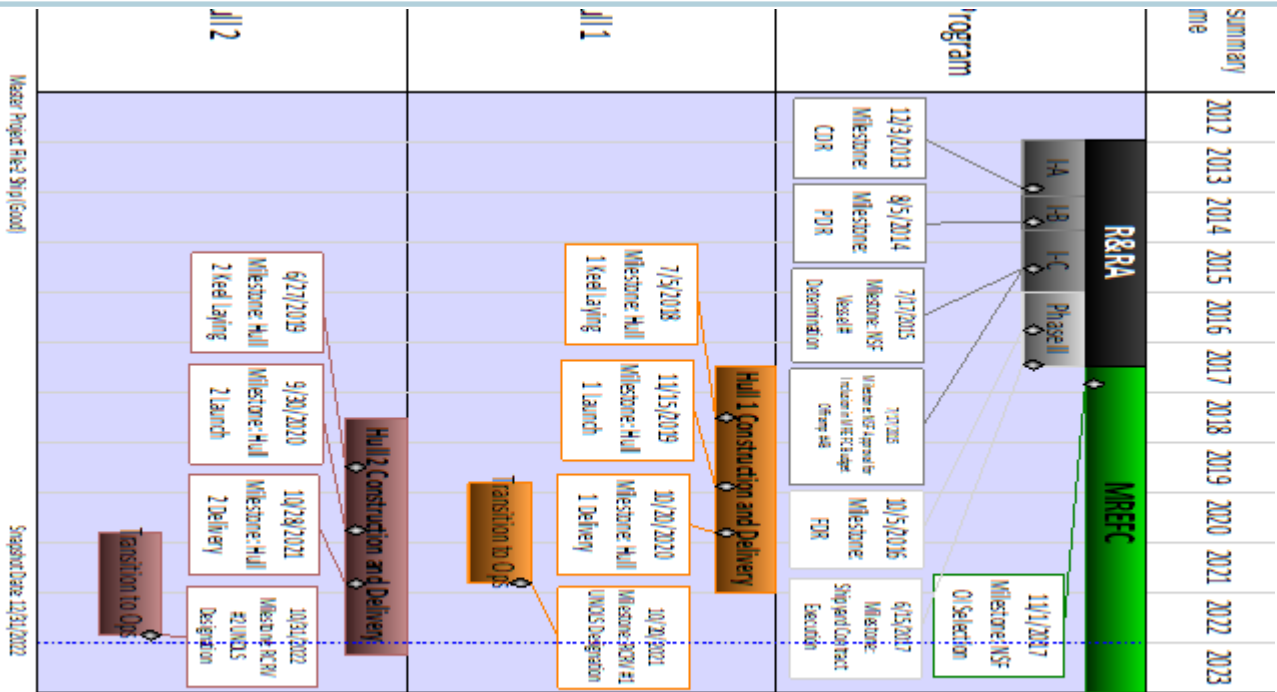
Early = Jan/Feb/Mar/Apr

Mid = May/Jun/Jul/Aug

Late = Sep/Oct/Nov/Dec

Anticipated Timeline for the RCRV Acquisition Strategy Milestones:

Integrated Master Schedule



Status Update ✓

- Passed CDR/PDR/BSR/Acquisition Review
- NSB recommended 2 vessels based on Decadal Survey. NSF has \$106M in FY17 Pres Bud.
- RFI to be released first week of May
- FDR in October
- NSF can speak to OI selection



NSF Off Ramps/Stage Gates

- ✓ 1 Determination to Award Phase I
- ✓ 2A Approval of CDR
- ✓ 2B Approval of Post-CDR Funding (Dec 2013)
- ✓ 3 Funding for PDR Appropriated (Feb 2014)
- ✓ 4A Approval of PDR
- ✓ 4B Approval for inclusion in MREFC Budget
- 5A Approval of SY Selection
- 5B Approval of FDR
- 6A Determination of Adequate Funding
- 6B Approval of Post-FDR Funding
- 7 Determination of Adequate Out-Year Funding

Bridge Mock Up



Model Testing

- Cavitation-free to 11 kts
- No evidence of bubble sweep down under simulated survey conditions

