

NOAA Office of Marine & Aviation Operations



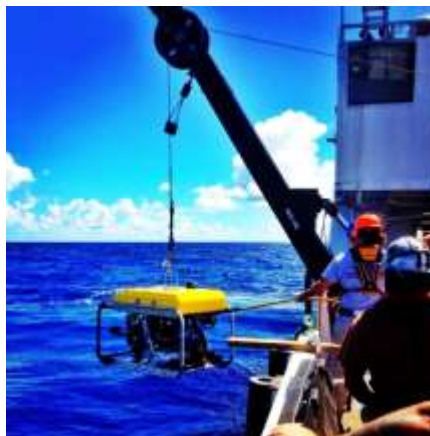
2015 RVOC Meeting



Value to NOAA & the Nation

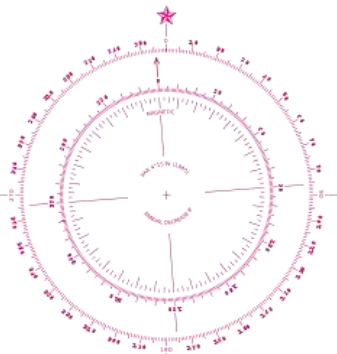
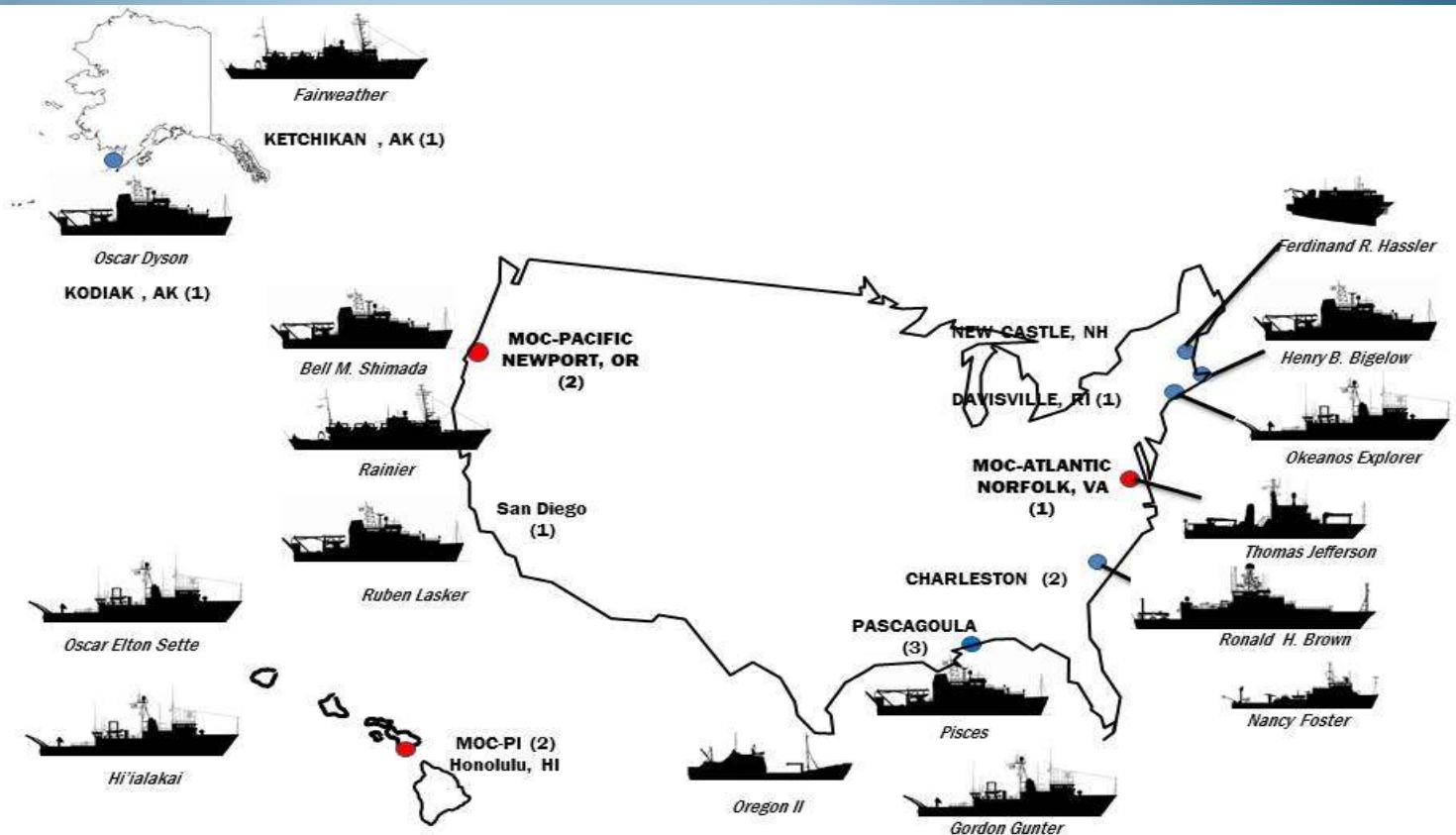
Environmental Intelligence

- Nautical Chart Data/DTN
- Fish Stock Assessments
- Marine Mammal Surveys
- Biological Sampling
- Ecosystems Research
- Habitat & Coral Reef Mapping
- Coastal Monitoring & Oceanographic Buoys
- Ocean Exploration

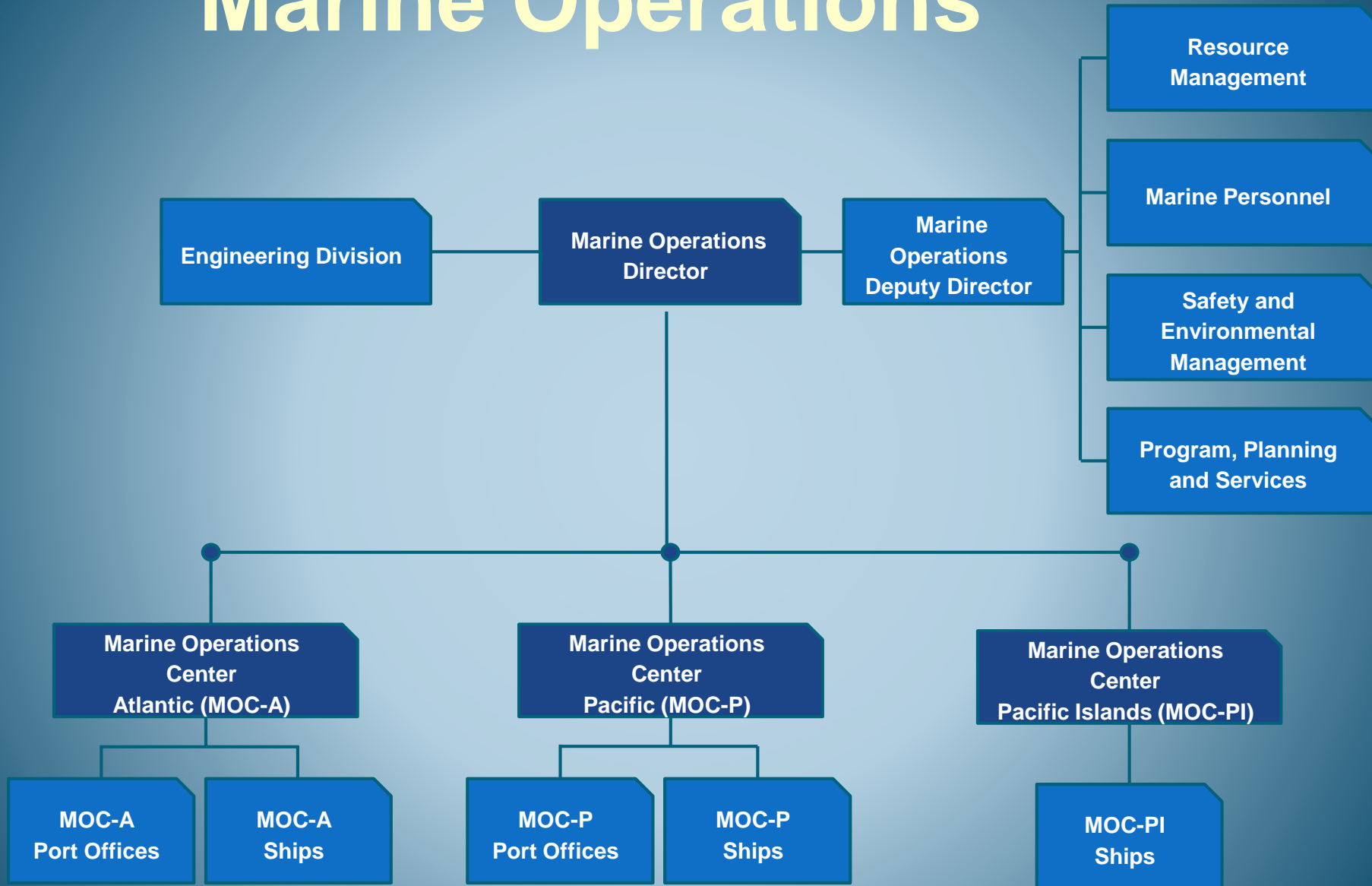




NOAA's Ships



Marine Operations





NOAA Marine Centers

MOC-Pacific



Newport, OR

MOC-Pacific Islands



Honolulu, HI

MOC-Atlantic



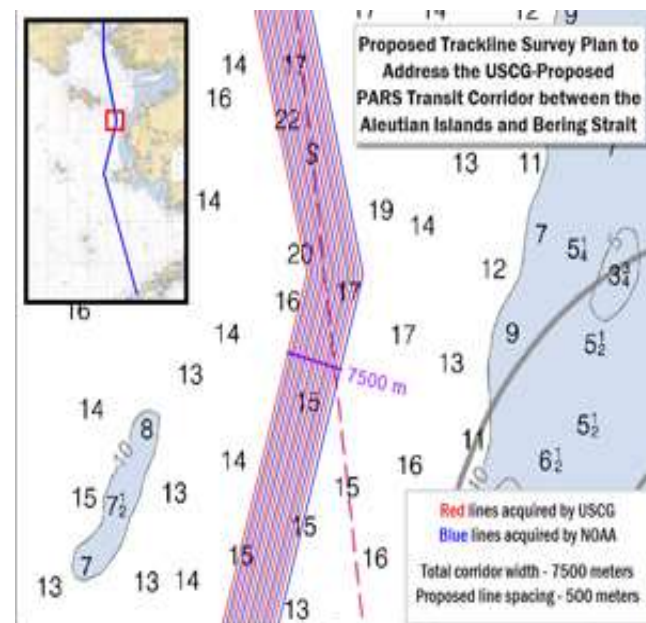
Norfolk, VA



NOAA Fleet Status

FY15 Planned: 3,135 days at sea, accomplished 698 DAS by end of March

- *Ronald H. Brown* is u/w on CLIVAR P16N then operating in Gulf of Alaska & Arctic
- *Okeanos Explorer* conducting Tropical exploration then transitioning to equatorial Pacific work & NWHI Exploration
- NOAA ships *Fairweather* & *Rainier* & USCG cutter *Healy* are coordinating transits to/ from the Arctic
- Reuben Lasker delayed start of ops due to power quality issue; MMC/ Teco/Rockwell solution to install active filters





NOAA Funded UNOLS charters

NTAS/ MOVE, PNE, WBTS Abaco-
Endeavor

TAO 95W/110W & NeMO Vents-
Tommy Thompson

U.S. ECS Mapping- Langseth &
KiloMoana

Sea Scallop Survey- Sharp

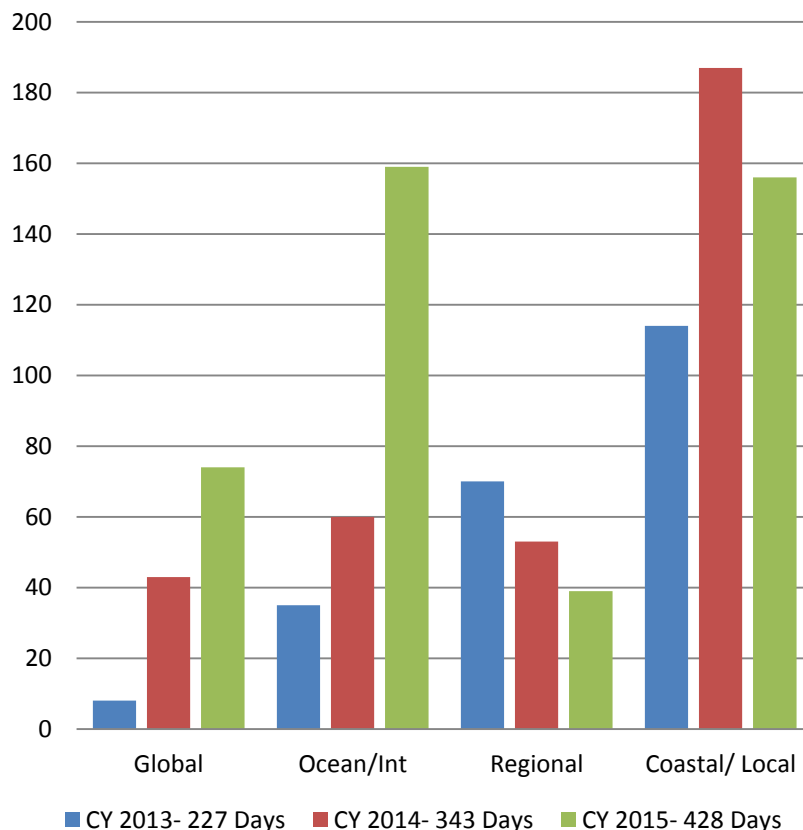
CalCOFI/ CCE- New Horizon/
Oceanus

SEFIS- Savannah

WBTS/ SFER- Walton Smith

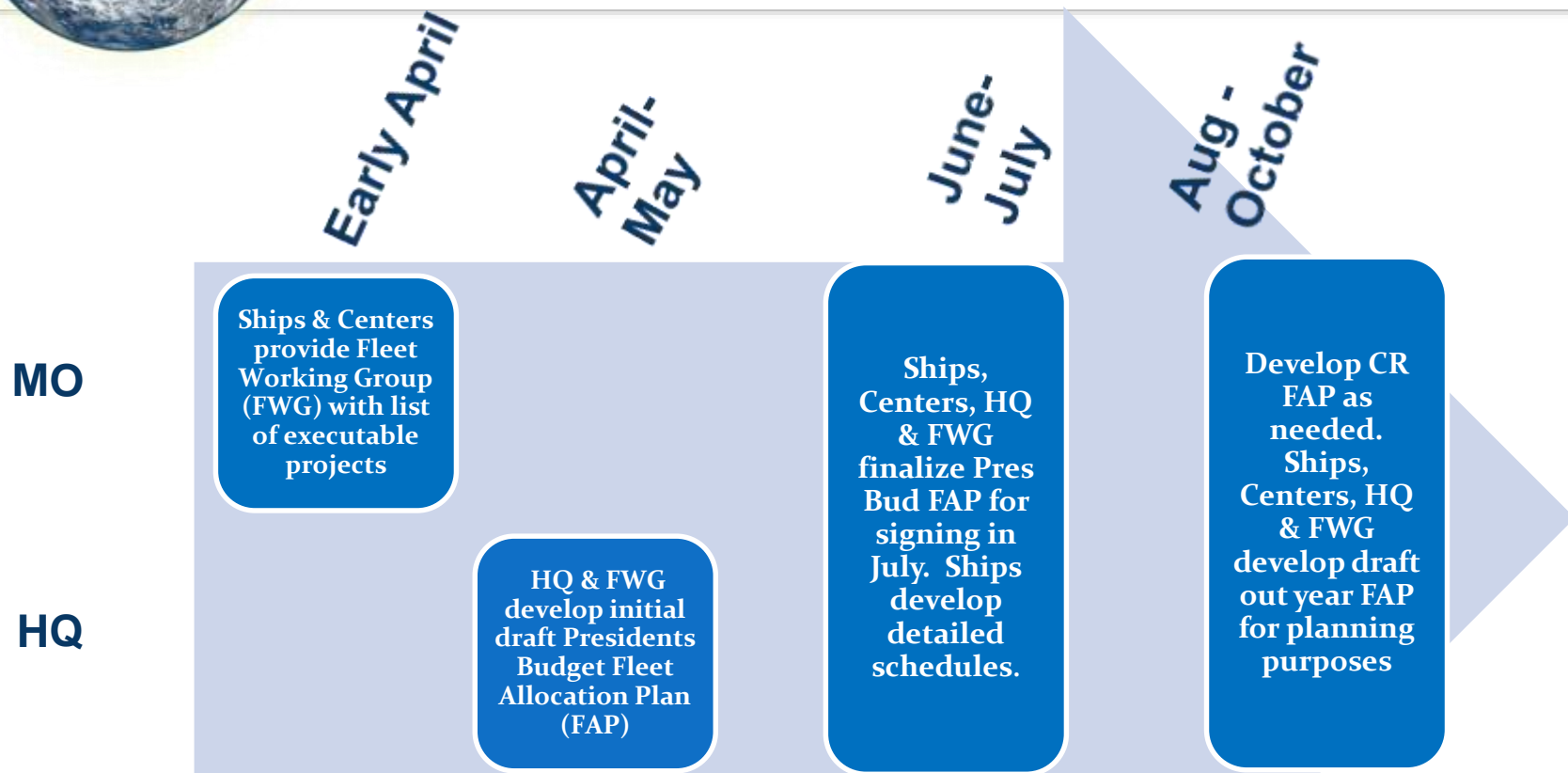
NOAA OE grants- Pelican

NOAA Funded days by ship class





NOAA Fleet Scheduling





Fleet Safety

- Fleet Inspection standard- CFR Subchapter U
- Maintain COI's after new construction- 2 ships
- Marine Operations SMS Implementation
- Shipboard safety stand downs
- Fleet wide training- crane rigging, fall protection, JJ Keller safety culture





Spirit of Safety

Workplace Improvement Cards

- Improve Safety Culture through behavioral change
- Constant reminder for Top 10 causes of accidents
- Atmosphere of sharing without fear of speaking up for safety
- Foster employee involvement

S.O.S. Workplace Improvement Card

Company _____ Date _____

Ship _____

☐ Observation ☐ Near-Miss

Safe ☐ **Unsafe** ☐

1.  **Authority or Training** ☐ 11. ☐ **Operating Tool or Equipment**

☐ 2.  **Lock or Secure** ☐ 12. ☐ **Lockout or Tag Out**

☐ 3.  **Warn or Communicate** ☐ 13. ☐ **Secure a Load/Tools**

☐ 4.  **Loading or Overloading** ☐ 14. ☐ **Barricades**

☐ 5.  **Speed** ☐ 15. ☐ **Warning Signs**

☐ 6.  **PPE** ☐ 16. ☐ **Hand Signals**

☐ 7.  **Tools and Equipment** ☐ 17. ☐ **Radios**

☐ 8.  **Housekeeping** ☐ 18. ☐ **Equipment**

☐ 9.  **Positioning** ☐ 19. ☐ **Slings**

☐ 10.  **Conditions of People** ☐ 20. ☐ **Body**

☐ **Fatigue** ☐ **Electrical**

© W C Safety Systems, Inc.
1.504.739.3878
May not be reproduced without permission

S.O.S.
Spirit of Safety

S.O.S. Workplace Improvement Card

Actions Observed (Safe or Unsafe)

Actions Taken (Praise or Correction)

Day of Week: ☐ Sun ☐ Mon ☐ Tue ☐ Wed ☐ Thu ☐ Fri ☐ Sat

Time of Day: ☐ 28. 6-9 am ☐ 29. 9 am-3 pm ☐ 30. 3-7 pm ☐ 31. 7pm-12 ☐ 32. midnight-6 am

Temperature: ☐ 33. Below 32° ☐ 34. 32°-70° ☐ 35. 71°-90° ☐ 36. over 90°

Weather: ☐ 37. Clear ☐ 38. Restricted

Wind: ☐ 39. 0-15 mph ☐ 40. 16-35 mph ☐ 41. over 35 mph

Sea State: ☐ 42. Calm ☐ 43. Choppy ☐ 44. Swells

Observer's Name: _____

© W C Safety Systems, Inc.
8805 Tangierwood Place, New Orleans, LA 70123 USA
1.504.739.3878
www.wcsafetyssystems.com
May not be reproduced without permission

S.O.S.
Spirit of Safety



Environmental Management System (EMS)

People, equipment, and procedures remain priority for environmental compliance



PEOPLE:

- ECO Workshop: 4-day training for Shipboard Enviro Compliance Officers
22 people trained in FY15; [+65 total]; UNOL's personnel invited
- HAZWOPER/Spill Training: 1-3 day training
120 people trained in FY15 [+400 total]



EQUIPMENT:

- Oil to sea interfaces: 13 systems (40%) (stern tube; etc.) changed to EAL
- LED: 75% of fleet using LEDs (T8's; floods; nav lights; battle lanterns)
- BW treatment: preferred systems ID'd; extension requested; planned in FY17



PROCEDURES:

- Confined Space Entry: rollout & training now; 5 ships (33%) compliant
- Mission HAZMAT procedure
- HAZWaste Management procedure



Simulations with MITAGS - PMI



NOAA Ship Models

FSV Class
TAGOS Class
RAINIER – FAIRWEATHER
RONALD BROWN
NANCY FOSTER



Newport Oregon Port Model

Safety Margin Study 2011
GO - NO GO Procedures
Goal: 5 simulation classes/ year

Questions?





Background slide- Marine Ops SMS

SMS Manual

- Overview of the entire SMS structure

Continuous Improvement

- Complete Plan-Do-Check-Act Cycle
- Learn from what happened, plan for the next time

Environmental Pollution Prevention

- Environmental Management System
- Fulfills SMS need to provide Pollution Prevention Policy



Safe Ship Operations

- Ship-use & shore generated SOP's
- Ship-use, ship-generated SSI's
- Document Management System accessible