



CPS Ship Support: 2016 Lookback/ 2017 Lookahead

Anna Schemper- CPS Science Project Manager

Kaare Erickson- UIC Science Community Liaison

Tasha Edwards- UIC Stakeholder Engagement Coordinator

Who is CH2MHill Polar Services?



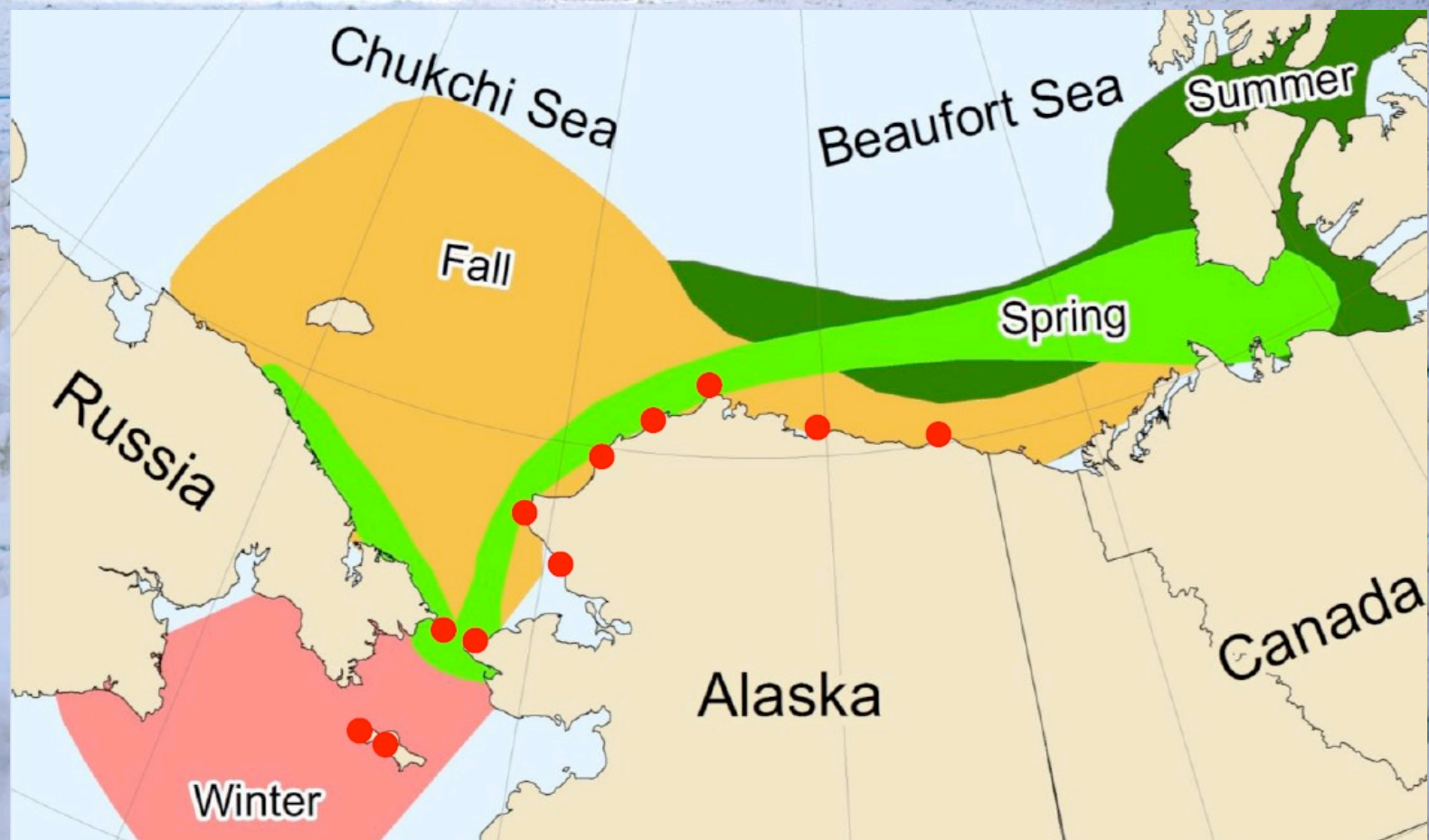
Barrow Large Vessel Stopover Support

- *HEALY* logistics stopovers in past years
- Personnel transfers via helicopter and landing craft
- Shoreside support including lodging, vehicles, cargo handling, scientific sample storage



AEWC and BWCA

- Marine subsistence activities occur in waters of many North Slope villages. UIC Science is currently working to strengthen its relationships with members of the whaling community.



Community Observer Program

Core Duties

- Communicate with native communities to avoid potential conflict
- Heighten cultural awareness of researchers and crew
- Share science with native communities



2016 CPS Support

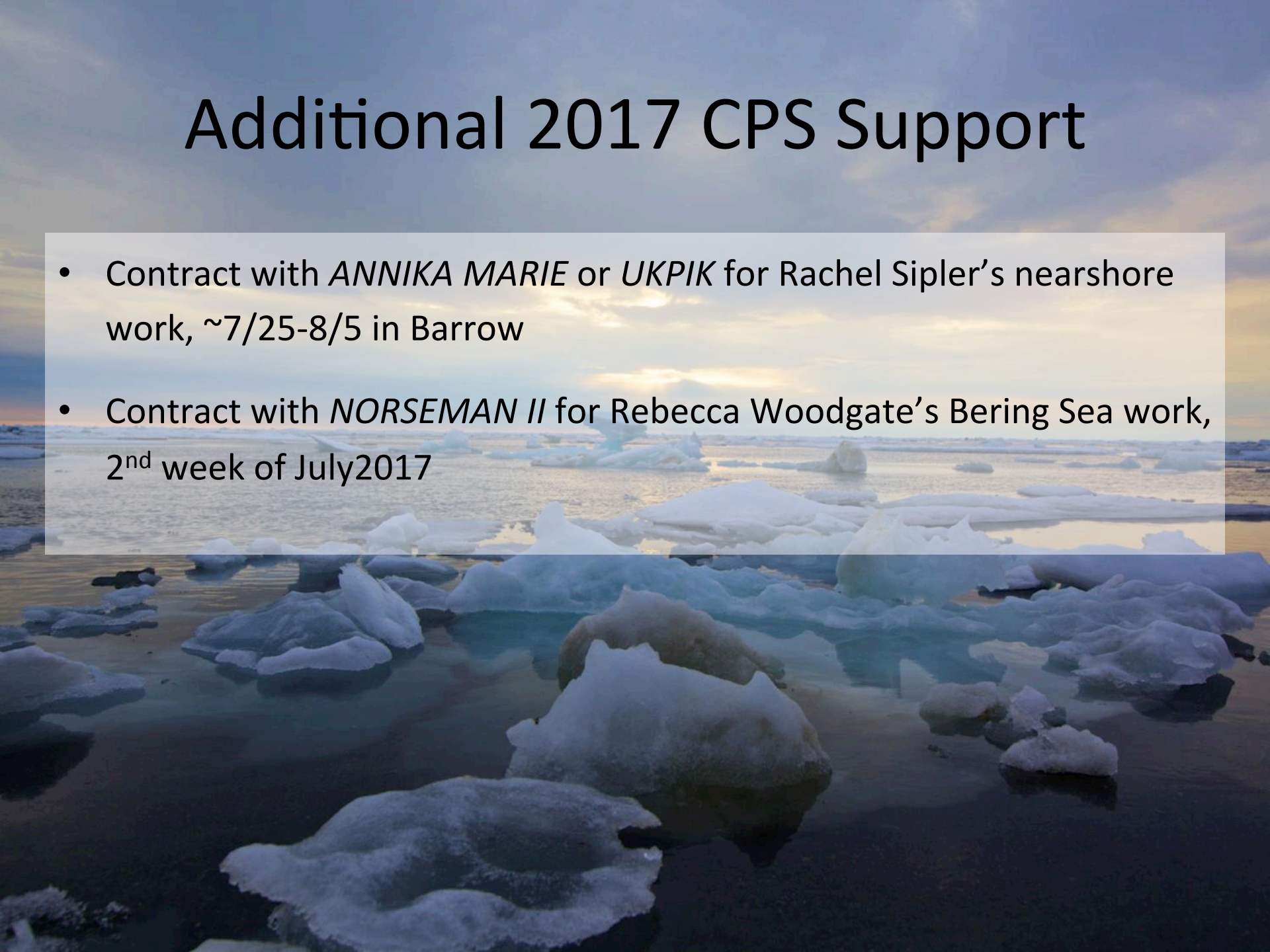
- No logistics stopovers for the *HEALY* or *SIKULIAQ* in Barrow in 2016
- Ground support for Grebmeier et al disembarking from *LAURIER*
- CPS hired a Community Observer for Juranek/Sipler *SIKULIAQ* cruise
 - NSF took over communications between researchers and AEWG following February 2016 presentation in Barrow, due to heightened sensitivities around fall whaling conflicts
 - Sipler canceled nearshore sampling campaign at behest of AEWG members; cruise dates shifted
 - Herbert Tagarook hired with 2 weeks' notice
 - *“Herbert was professional and very focused on his objectives. He was very helpful in arranging and communicating with the Point Hope community during our visit. I highly recommend Herbert in the future!”* –Rachel Sipler

2017 CPS Planned Support

- No logistics stopovers for *HEALY* in Barrow
- Ground support for Grebmeier cruise, disembarking from *CCGC LAURIER* ~July 21
- Community Observer hire for Juranek/Sipler and Ashjian *SIKULIAQ* cruises
 - Juranek/Sipler: August 8-24, Barrow<>Nome
 - Ashjian: August 25-September 18, Nome<>Nome
- Shore-to-ship transfer of 20 pax in Barrow to *SIKULIAQ* on August 8, 2017.

Additional 2017 CPS Support

- Contract with *ANNIKA MARIE* or *UKPIK* for Rachel Sipler's nearshore work, ~7/25-8/5 in Barrow
- Contract with *NORSEMAN II* for Rebecca Woodgate's Bering Sea work, 2nd week of July 2017





26' and 32' Munson Landing Crafts