



2026 Spring UNOLS RVOOC Meeting

*U.S Academic Research Fleet
NSF Ship Ops Updates*

NSF Leadership Updates

- In March 2026, President Trump nominated **Jim O'Neill** to serve as NSF Director.

- If confirmed, he will replace the previous director— **Sethuraman Panchanathan**— and **Brian Stone**, Chief of Staff Performing the duties of the NSF Director.

- As of late April 2026, the nomination remains pending before the Senate.



Organizational Changes

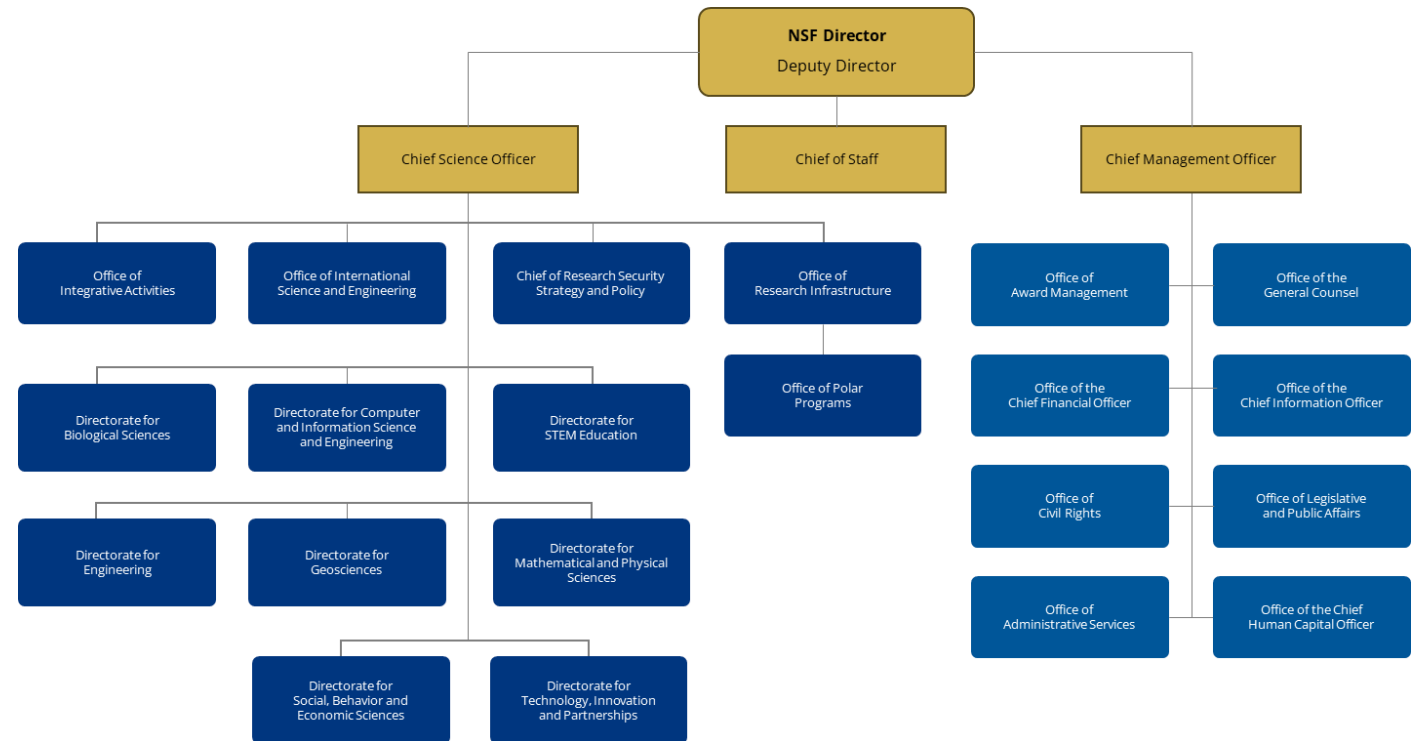
NSF Facilities are now consolidated under the Office of the Director (OD), within the **Office of Research Infrastructure (ORI)**.

The full ARF team* now reports through OD/ORI.

**Except the UNOLS award*

Reporting structure

- **Charlotte Roehm**, Supervisor
- **Maggie Benoit**, Branch Chief
- Parallel clusters (primarily of OPP)

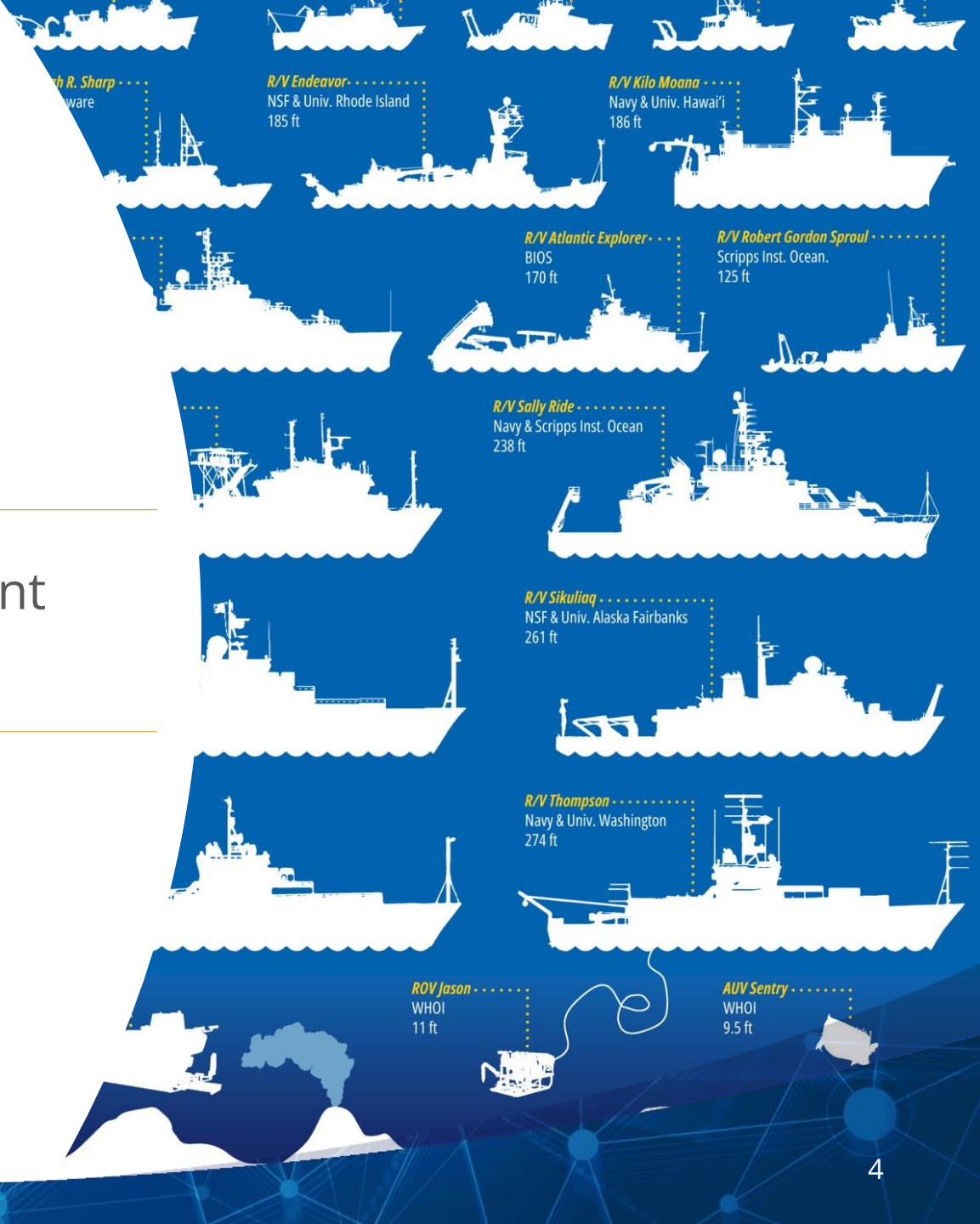


Coordinate with Ocean Sciences

ARF teams meet weekly with Ocean Sciences program directors.

This ongoing engagement is critical for alignment with science priorities.

Ocean Sciences leadership input will be key to shaping the future of ARF and recapitalization efforts.



Key Performance Indicators for NSF cruises

Vessel Class	Ship Name	Total Operating Days	NSF / OCE Sea Days	NSF / OPP Sea Days	NSF Port Days	% of NSF days of full operating year
Global	<i>Atlantis</i>	193	187	0	0	97%
	<i>MG Langseth</i>	273	273	0	0	100%
	<i>Roger Revelle</i>	241	173	57	0	72%
	<i>Sikuliaq</i>	269	67	124	0	71%
	<i>TG Thompson</i>	285	208	0	0	73%
Ocean / Intermediate	<i>Atlantic Explorer</i>	229	193	0	0	84%
	<i>Endeavor</i>	154				
	<i>(Oceanus)</i>					
	<i>Kilo Moana</i>	218	206	0	14	94%
	<i>Neil Armstrong</i>	235	162	0	0	69%
	<i>Sally Ride</i>	130	62	0	11	48%
Regional	<i>Hugh R. Sharp</i>	118	57	0	19	48%
Local	<i>F.G. Walton Smith</i>	45	20		2	44%
	<i>Pelican</i>	198	57			29%
	<i>Robert Gordon Sproul</i>	98	0	0	4	0%
	<i>Savannah</i>	147	56		16	38%
Local / Coastal	<i>Blue Heron</i>	102	59		4	58%
	<i>Rachel Carson</i>	69	25		6	36%

KPI is the number of days accomplished for NSF vis-a-vis planned/needed



Key Performance Indicators for NSF cruises

Vessel Class	Total Operating Days	NSF / OCE Sea Days	NSF / OPP Sea Days	NSF Port Days	% of NSF days of full operating year
Global	1261	908	181		
Ocean / Intermediate	966	623	0	25	
Regional	118				
Local / Coastal	659	217	0	32	
Total	3004	1748	181	57	60%



KPI is the number of days accomplished for NSF vis-a-vis planned/needed

Key Performance Indicators

OMB is requesting Key Performance Indicators (KPI) for each NSF facility

Current Metric - *planned vs. executed days*

Easy to track but can misrepresent performance

Proposed KPI Approach - *percent of NSF-funded science objectives completed*

Emphasizes mission accomplishment over time spent

Supporting Metrics

- Planned vs actual NSF-supported ship days
- Percent of annual NSF days executed
- Variance explanations
weather, mechanical issues, efficiency gains, etc.



Program Challenges



Fuel prices continue to exceed January budget estimates.



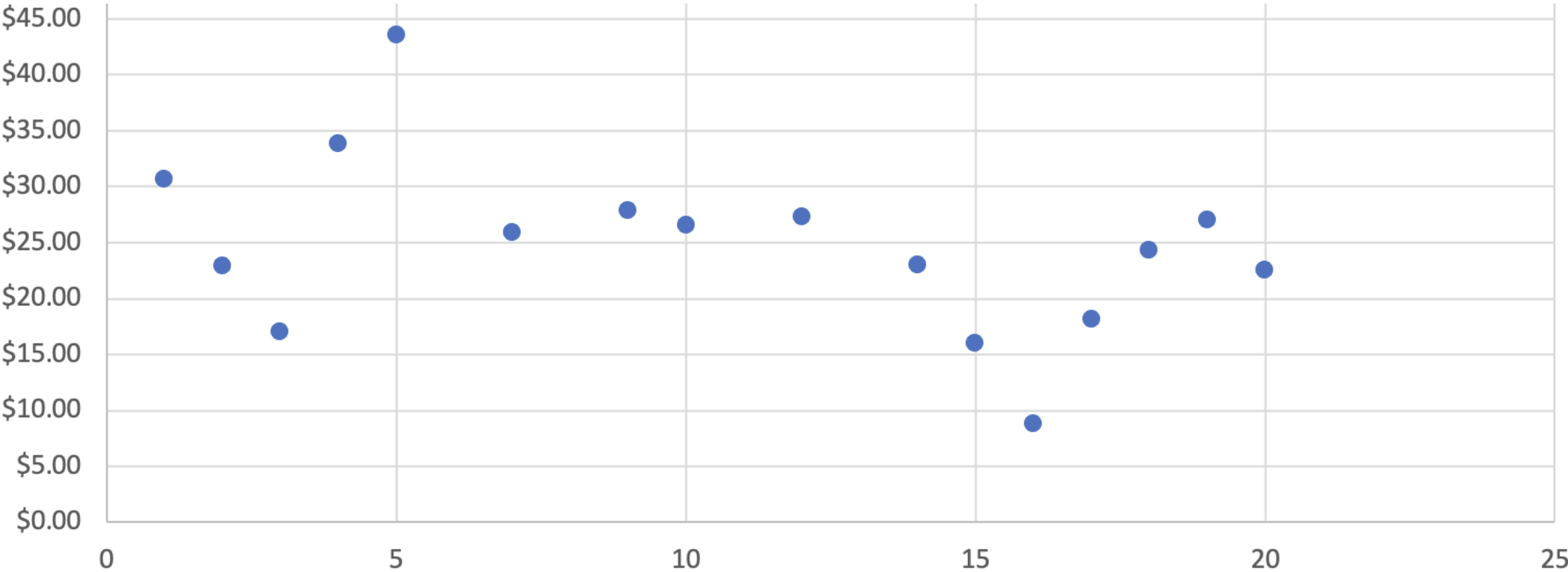
If current trends persist, the NSF Ship Operations program is projected to face a \$5–\$6M shortfall.



NSF Branding
<https://nsf.widen.net/s/xzrd9bgklh>



CY 2026 Food Cost Per Person Per Day Cost Across ARF



Questions?



