



U.S. National Ice Center

Arctic Icebreaker Coordinating Committee Winter Meeting



USN



USCG



NOAA

Director: CDR Tucker Friesmuth, USN
Deputy Director: Mr. Kevin Berberich, NOAA
January 14, 2026



Mission and Organizational Alignment



*The U.S. National Ice Center, in collaboration with its global partners, empowers mariners and Naval forces operating in polar, subpolar, and Great Lakes regions with **authoritative** and **timely** snow, sea- and lake-ice products and forecasts. **USNIC safeguards life and property at sea, defends access and commerce, and further enhances Naval maneuver and superiority.***

VISION STATEMENT

To be the globally recognized authority for ice and snow decision support services for increased commerce, homeland security, and national defense.

Tri-agency organization composed of:

NOAA component:

NWS, Ocean Prediction Center, Ice Services Branch

Navy component:

Fleet Weather Center Norfolk, Naval Ice Center

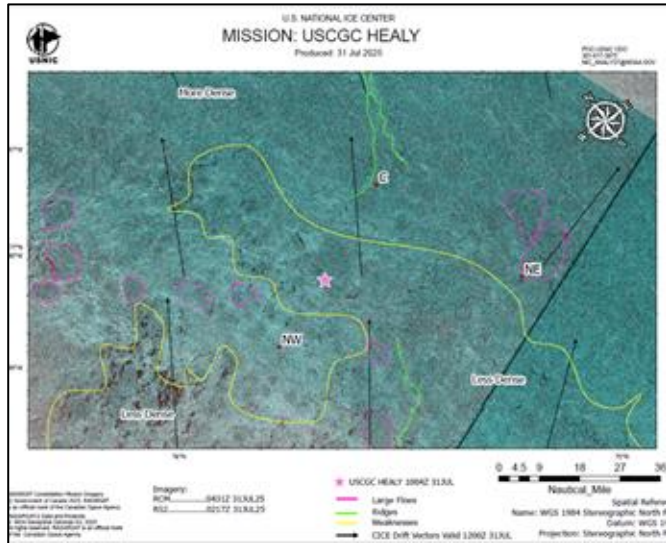
USCG component:

Office of Waterways and Ocean Policy, Mobility and Ice Operations Division





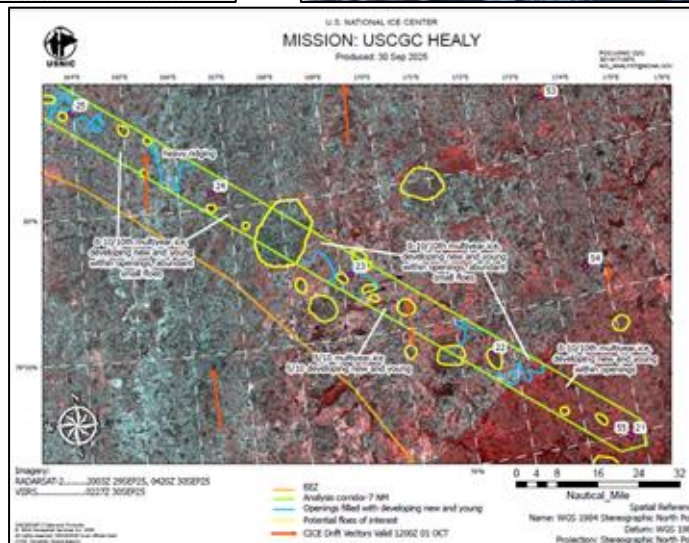
Healy 2501 and 2502



USNIC analysts onboard the USCGC Healy provided real-time support during the vessel's 2025 summer and early fall deployments across the Beaufort, Chukchi, East Siberian, and Laptev Seas. Product requirements were adjusted in response to the evolution of missions and sea ice conditions.

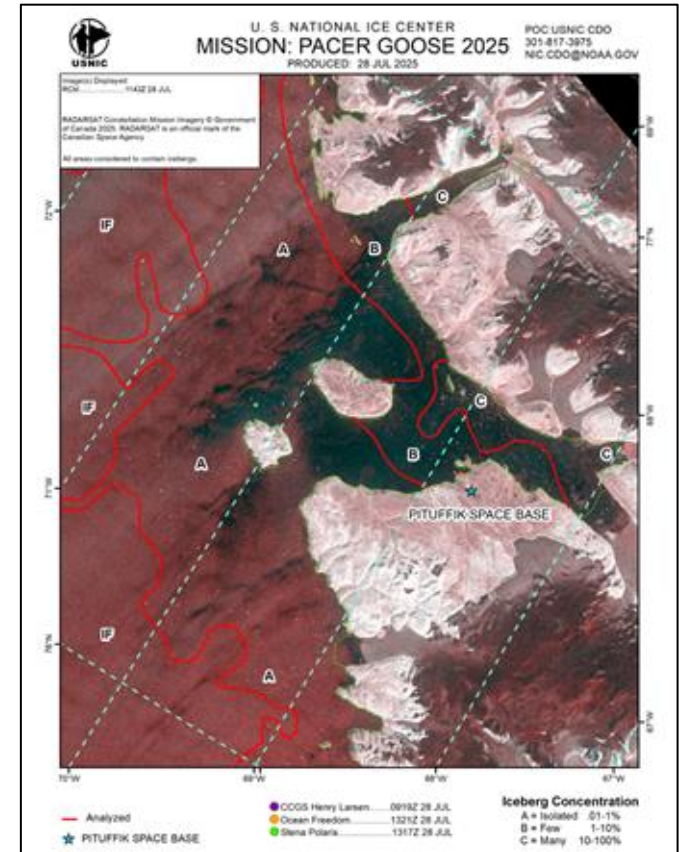
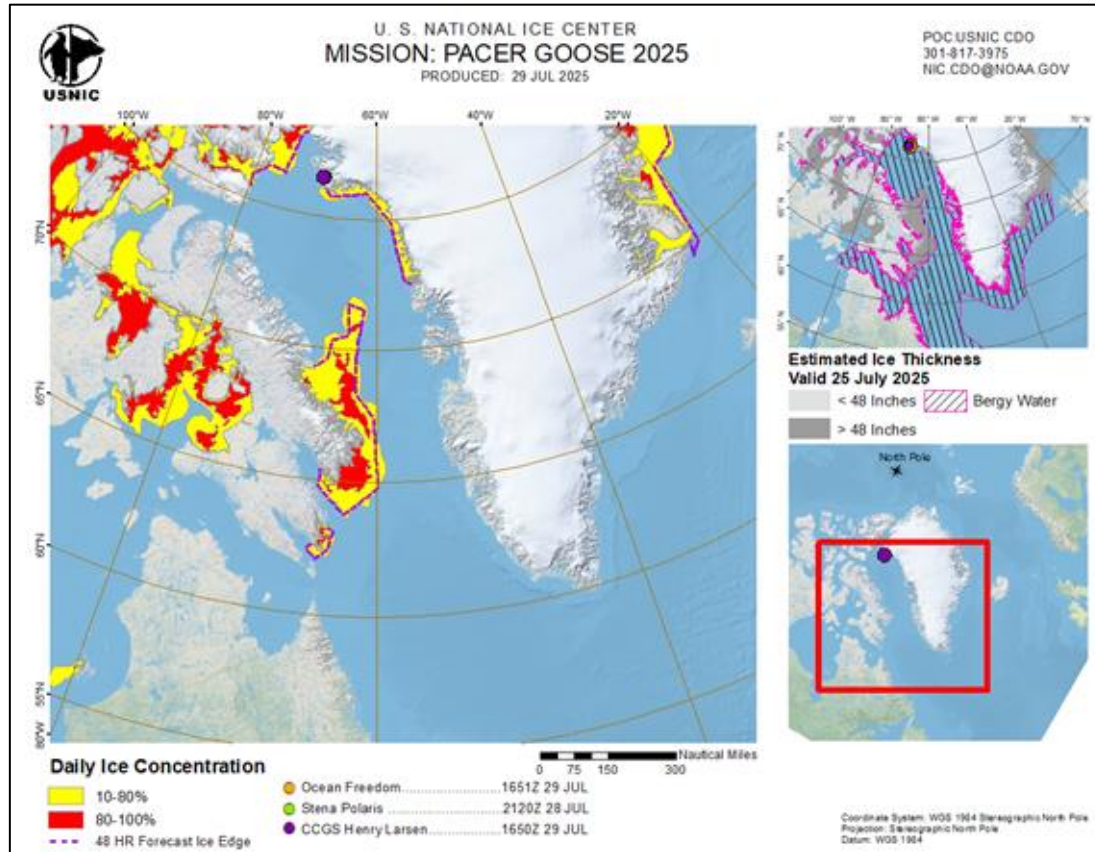
While deployed, USNIC analysts:

- Assisted with route planning for sea ice transits
- Delivered daily briefs to the Captain and department heads
- Provided analyzed imagery to watchstanders to enhance situational awareness
- Were available continuously to provide ice support during science missions





Pacer Goose 2025



USNIC supported Ocean Freedom, Stena Polaris, and CCGS Henry Larsen for Pacer Goose 2025.

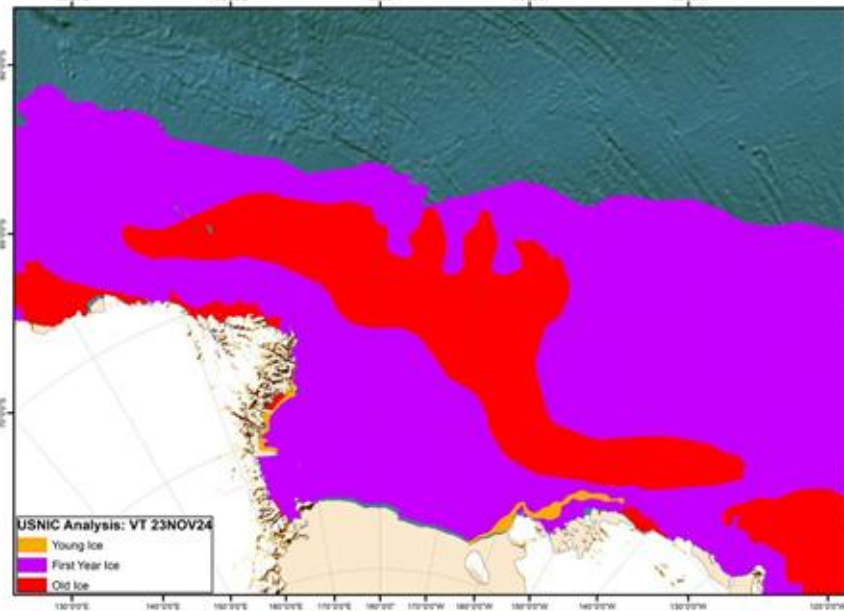
A pre-sail brief was also provided, covering current conditions and expected conditions based on climatology and Navy ESPC model data.



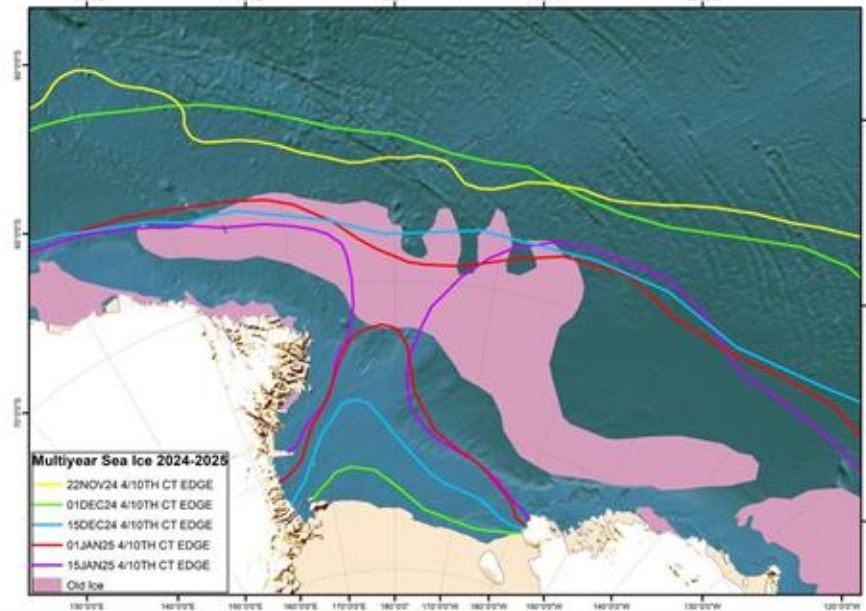
Operation Deep Freeze Support 2024-2025



U.S. NATIONAL ICE CENTER
ROSS SEA CURRENT ICE CONDITIONS
PRODUCED: 22 NOV 2024



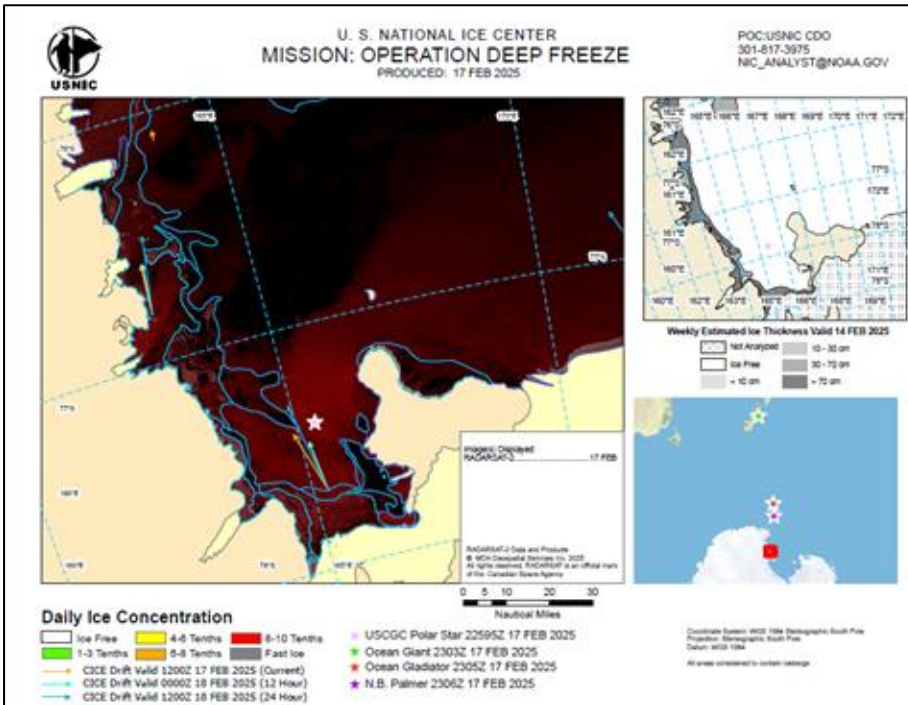
U.S. NATIONAL ICE CENTER
ROSS SEA ICE RECESSION PREDICTION
PRODUCED: 22 NOV 2024



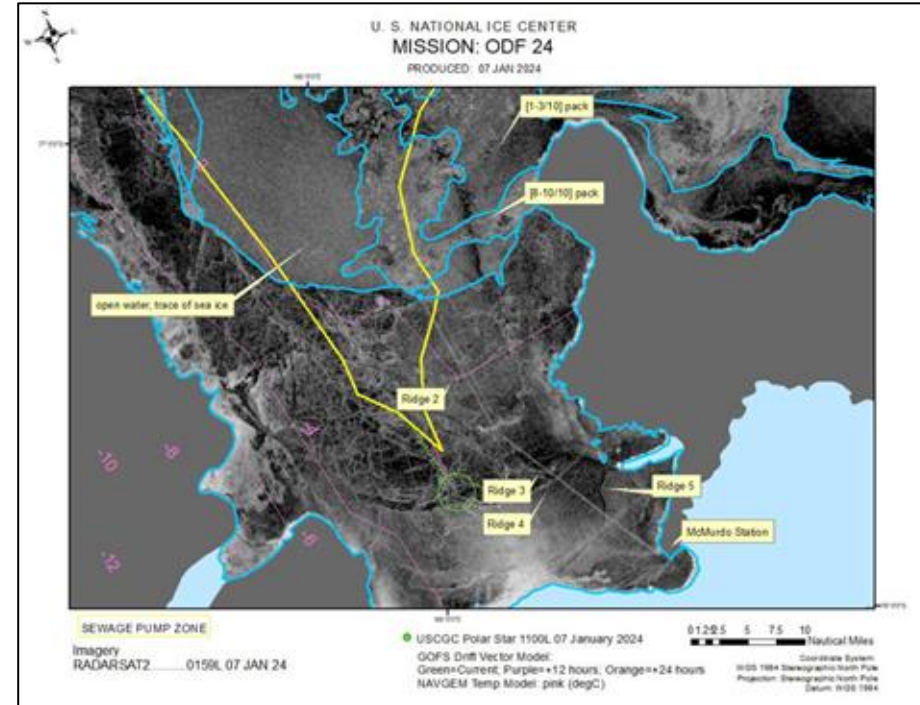
Prior to the commencement of Operation Deep Freeze 2025, USNIC provided the annual Ross Sea Outlook to the USCGC Polar Star, participating resupply vessels, and other customers with interest in the area, highlighting current sea ice conditions and the forecasted sea ice melt pattern.



Operation Deep Freeze Support 2024-2025



Example of USNIC Remote Support

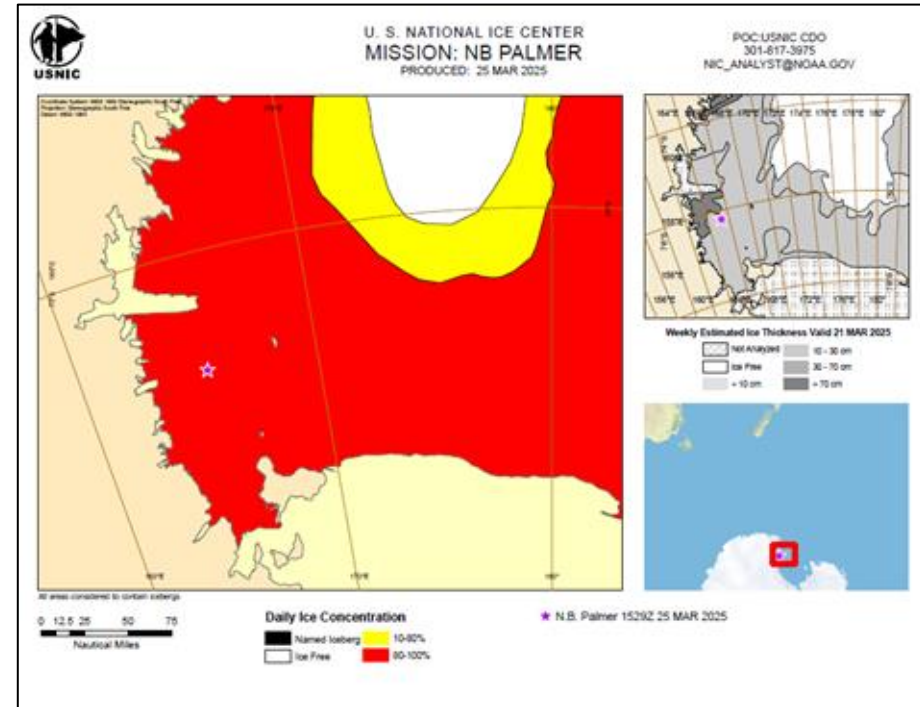
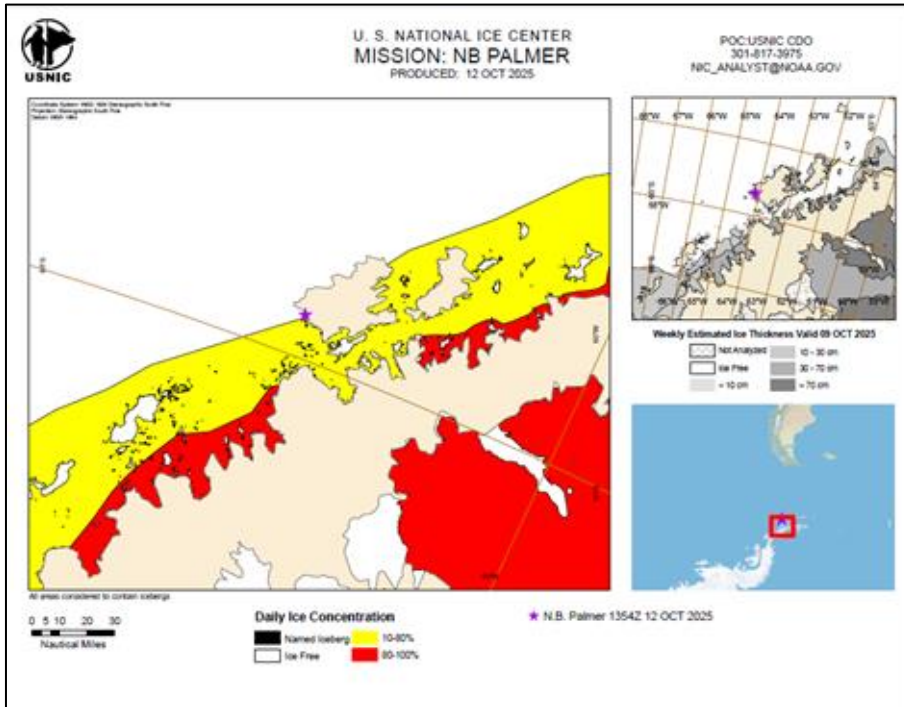


Example of Onboard Analyst Support

The USNIC analyst onboard the USCGC Polar Star provided daily products to the vessel's ice pilots. Analyst's priorities were safety of navigation through the fast ice in McMurdo Sound, ridge avoidance, and maintaining a clear ice channel for escorting the non-ice hardened vessels into Winter Quarters Bay.



N.B. Palmer 2025



USNIC supported N.B. Palmer's final resupply mission to Palmer Station in Antarctica. This annual NSF-funded cruise conducted research in the Bellingshausen, Amundsen, and Ross Seas.



Request for Support



Contact Information

Agency*

Name*

Email*

Phone

Best times to contact you

Request Details

Area of interest*
Liaison will be in contact for additional detail (if approved).

Dates required for services*

List of needed ice parameters

Vessel Limitations

Mission Goal*

Additional users to be added to dissemination list

Delivery Information

Frequency*

Time Product is needed*
Times are in EST, USMC working hours: 8am to 4pm

Format*

How do you need the data disseminated*
Secured ftp is not guaranteed as there is an approval process for this done through NOAA.

How will you be using the data

<https://usicecenter.gov/Resources/TailoredSupportForm>



Questions and Comments



POC:

nic_analyst@noaa.gov

nic.cdo@navy.smil.mil

Watchfloor: (301) 817-3975

Command Duty Officer (CDO): (301) 943-6977

www.usicecenter.gov