



Interagency Arctic Research Policy Committee: Field Operations Community of Practice

Katy Smith, MB Armstrong, David Allen, Renee Crain



IARPC FOCF

The Interagency Arctic Research Policy Committee (IARPC) is tasked with implementation of the Arctic Research Plan by coordinating representatives from federal and state agencies, academia, industry, and Indigenous and Local partners with interests in Arctic research.

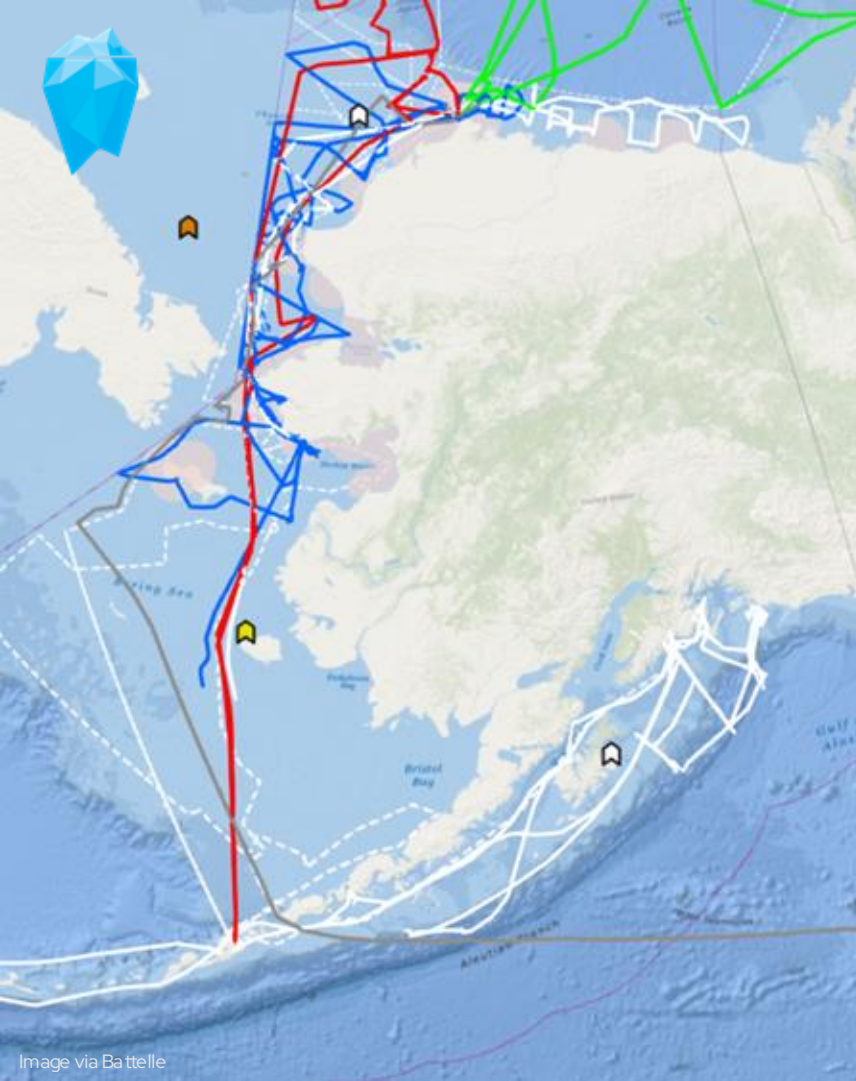
2.2.4 – coordinated interdisciplinary observations

MOMP 3.2 – communicate about field activities with communities

MOMP 4.1 – promote and support good practices for

IARPC Homepage

<https://www.iarpccollaborations.org/index.html>



Field Operations

Coordinate among federal agencies supporting fieldwork and share information among researchers and communities.

Research Vessel Matrix
Mooring Matrix
Pre/Post-field Season Meetings
Public Meetings
Fed-Only Meetings



FOCP Co-Leads



David Allen
NOAA ARP



Renee Craine
US NSF



Katy Smith
US NSF (contractor)



MB Armstrong
Knauss Fellow

Planned Research Vessel Movements: 2025 Research Season

Each spring, summer, and fall, numerous research vessels travel through Alaska and Arctic waters. IARPC and federal agencies compile planned research expedition dates, planned routes, research goals, and locations of data-collection moorings.

Our hope is that researchers can use the information about research expeditions to coordinate activities, and that communities can use it to understand what vessels are in their waters and how to contact them if necessary. Additionally, with the list of mooring locations we aim to inform the scientific community and vessel operators of the locations of all moorings presently deployed in the Bering, Chukchi, and Beaufort seas. This will reduce the risk of damage to the moorings and facilitate collaborative science activities.

On this page you will find a spreadsheet with all planned expeditions, brief descriptions of expeditions, and a spreadsheet of mooring locations.

The spreadsheets will be periodically updated and emailed out to partners. If you would like to receive updates, [sign up for the email distribution list](#). Please contact field.operations@iarppcollaborations.org with any questions, or to provide additional information about upcoming expeditions.

Download the spreadsheet of research expeditions

[Excel](#) | [PDF](#)

Updated April 21, 2025

Research Vessel Matrix

Routinely updated webpage with
compiled information about
expeditions to inform
communities & researchers.



Scan for the
2025 matrix.

2025 Pre-Field Season Meeting Recording:
<https://www.iarppcollaborations.org/events/2628>



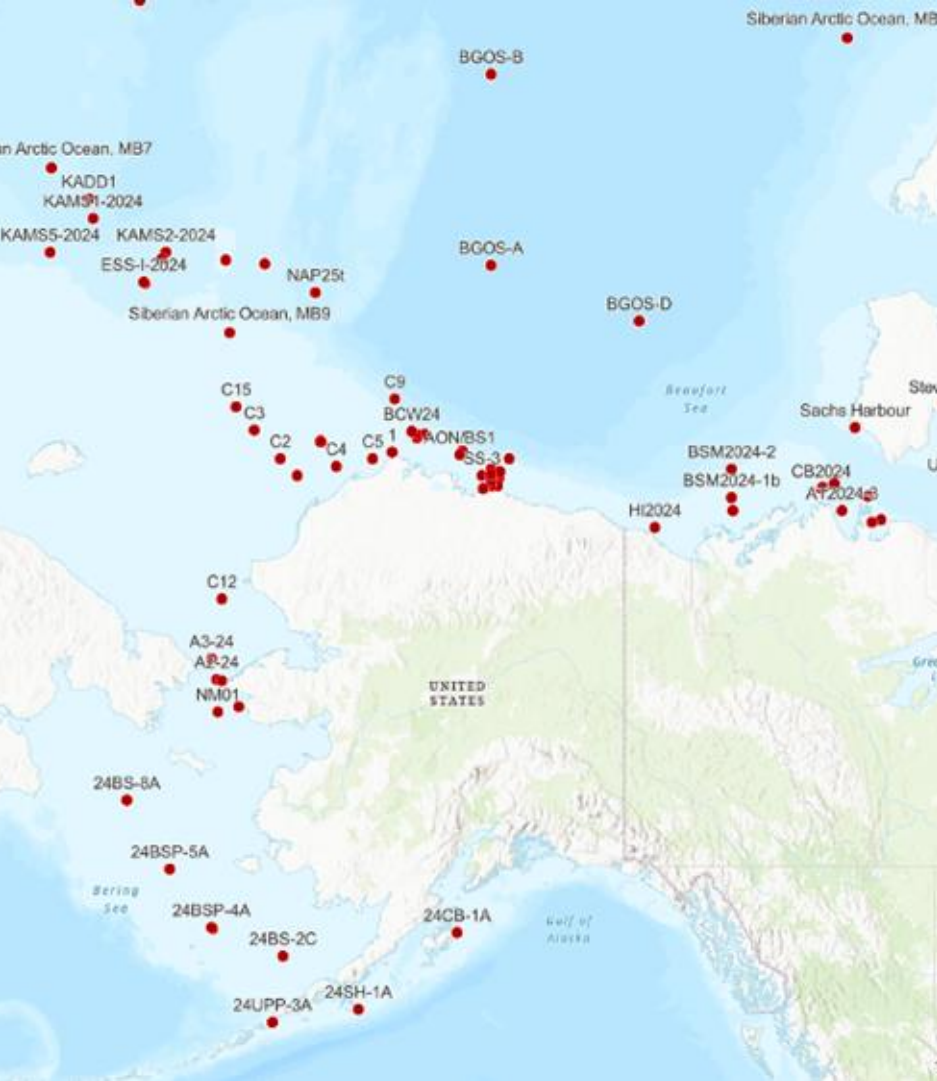
Where to find the vessel matrix

- Website & events
- Newsletter subscriptions
- Direct emails to community groups/ leaders
- Listservs (e.g. UNOLS, ARCUS)
- Social media

Updates to the 2024 Research Vessel Movements Tracker



An [updated list](#) of 2024 Alaska/Arctic research vessel movements is now available on IARPC Collaborations. Changes that have been made since we last sent you the list include:



Mooring Matrix

The Mooring Matrix and accompanying GIS map provide detailed information about:

- Current mooring locations
- Deployment timelines
- Responsible agencies or researchers

These tools are essential for:

- Preventing accidental mooring damage
- Informing route planning for vessels
- Facilitating collaborative use of moored instruments

DAILY REPORT – RESEARCH VESSEL XXXXXX FOR DATE (DDMMYY)

RESEARCH VESSEL XXXXXX

PERIOD COVERED: MMDD-MMDD, HOURS (e.g., 0713 – 0714, 20:00-20:00)

PERIOD SHOULD COVER THE LAST 24 HOURS AND SHOULD BE REPORTED IN AKST/AKDT.

STARTING POSITION: LAT/LONG & REF TO GEO POSITION (ESTIMATED)

ENDING POSITION: LAT/LONG & REF TO GEO POSITION (ESTIMATED)

NARRATIVE OF OPERATION ACTIVITIES OF THE PAST 24 HOURS (SUMMARY OF ACTIVITIES)

NOTABLE WILDLIFE OBSERVATIONS (MARINE MAMMALS, SEA BIRDS, ETC.)

CURRENT WEATHER DESCRIPTION

- WIND: XXXT/XXKTS
- SEAS: XXXT/XFT. SWELL XXXT/XFT
- SEA SURFACE SALINITY

NARRATIVE OF UPCOMING OPERATIONS FOR THE NEXT 24 HOURS (BOROING/GLIDER DEPLOYMENTS, SMALL BOAT OPS, TRANSIT DETAILS, ETC.)

DATE DEPARTED HOMEPORT: DDMMYY

SCHEDULED RETURN TO HOMEPORT: DDMMYY

NEXT PORT OF CALL: DDMMYY-DDMMYY

LOCATION: CITY, STATE/COUNTRY

POINTS OF CONTACT

- BRIDGE CONTACT
 - PHONE:
 - EMAIL:
- LEAD SCIENTIST CONTACT
 - PHONE
 - EMAIL

FOCP / Arctic Watch: Daily Cruise Report Template

- Send to ops@arcticwatch.org
- Consistent, standardized information
- Expanded distribution network
- Sharing and archiving of data
- Created and socialized with researchers, communities, federal agencies
- Reports will be distributed via the Arctic Watch enrollment system
- <https://www.iarpccollaborations.org/uploads/cms/documents/focp-report-template.pdf>



Safe field practices materials

- [Principles for Conducting Research in the Arctic](#)
- [UNOLS Maintaining an Environment of Respect Aboard Ships](#)
- [NSF OPP Code of Conduct](#)
- [Battelle Arctic Research Operation's Health, Safety and Environment page](#)
- [Battelle Arctic Research Operation's Ethics Reporting](#)
- [NSF OPP Safety and Occupational Health Policy](#)
- [U.S. NSF's Arctic Fieldwork Update for 2024](#)
- [NSF Crevasse Webinar Series March/April 2023](#)
- [Toolik Field Station Handbook](#)



Post-field Season Meeting

January 22nd, 2026

1-3pm ET/9-11am AK (Virtual)

<https://www.iarpccollaborations.org/events/26652>

Questions? Contact

field.operations@iarpccollaborations.org



What's next for FOCP?

- Are there any needs that the AICC/UNOLS community think that the FOCP could fill?
- Are there opportunities for better collaboration and communication between the AICC and FOCP?



IARPC Vessel Matrix Newsletter

Sign up for information on planned research vessel movements throughout the Arctic and Arctic waters.

* First name

* Last name

* Job title

Newsletter

Sign up for the IARPC Vessel Matrix/FOCP update newsletter:

<https://lp.constantcontactpages.com/sl/OzAi2zN>

Questions? Contact:

field.operations@iarpccollaborations.org