



RCRV Update RVTEC 2025

Regional Class Research Vessel Program- Oregon State University

November 06, 2025





Regional Class Research Vessel Program- Summary

Design and build three new research vessels- Project is managed by Oregon State University & funded by the National Science Foundation (NSF)

Operating Institutions

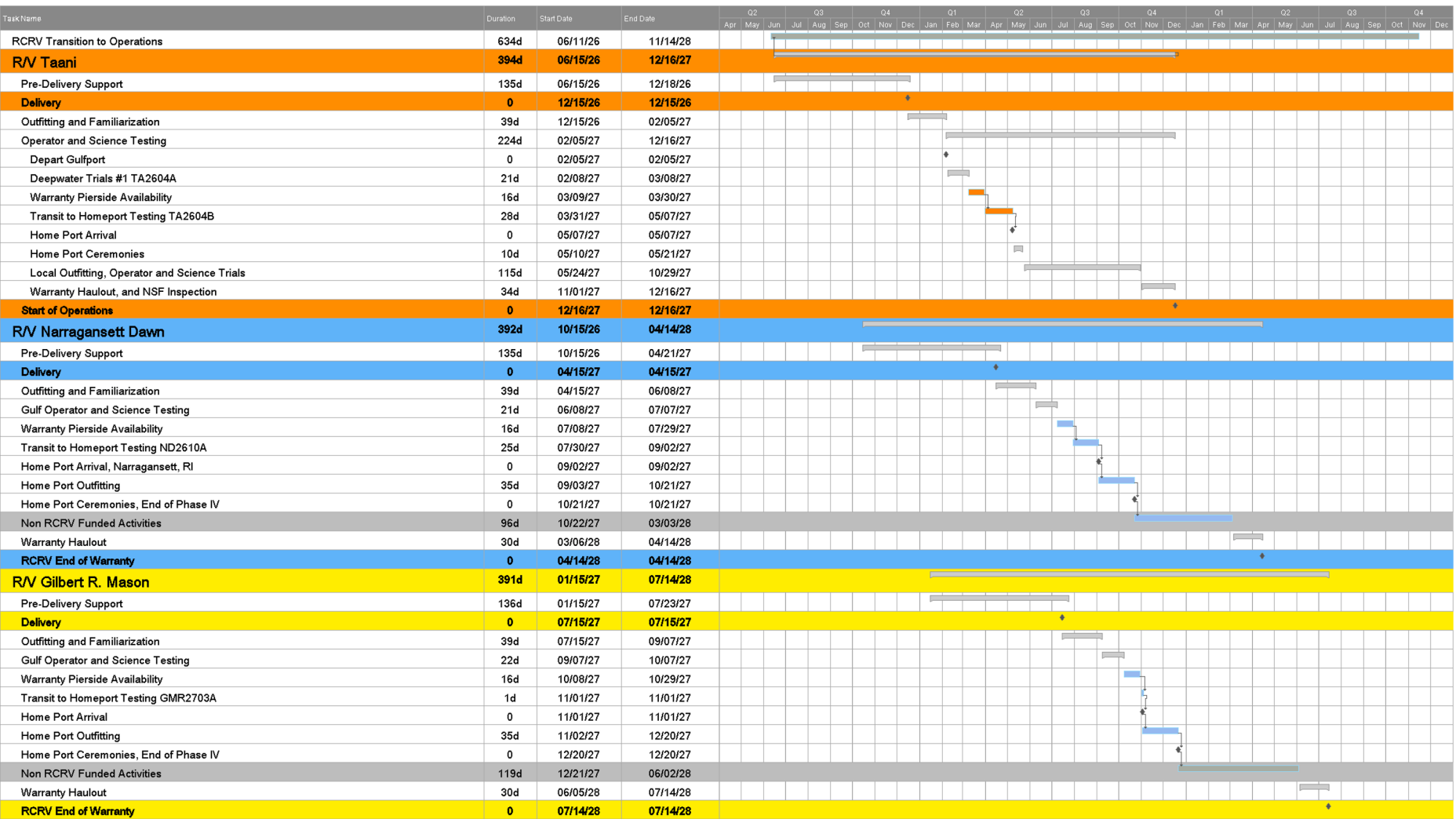
- Oregon State University- *R/V Taani*
- East Coast Consortium- University of Rhode Island- *R/V Narragansett Dawn*
- Gulf Caribbean Oceanographic Consortium- USM and LUMCON- *R/V Gilbert R. Mason*

Currently being built in Houma, Louisiana at Bollinger Shipyards.





RCRV Estimated Schedule



- **R/V Taani**
 - Start of Transition to Operations
 - **06/15/2026**
 - Vessel Delivery
 - **12/15/2026**
 - Start of Operations
 - **12/16/2027**
- **R/V Narragansett Dawn**
 - Start of Transition to Operations
 - **10/15/2026**
 - Vessel Delivery
 - **04/15/2027**
 - End of T-to-O
 - **10/21/2027**
- **R/V Gilbert R. Mason**
 - Start of Transition to Operations
 - **01/15/2027**
 - Vessel Delivery
 - **07/15/2027**
 - End of T-to-O
 - **12/20/2027**



RCRV Progress Update Fall 2025 Video



<https://www.youtube.com/watch?v=UV2KN5O-z8I>





Regional Class Research Vessel - Project Field Office- Bollinger Shipyard- Houma, LA

*Indicates Subcontractors to OSU



John Comar
Shipyard
Representative



Hannah Rivera
Program Administration
Coordinator



Russ Morton
Deputy Shipyard
Representative / Lead
Inspector



Olan Cobb
Electrical Inspector*



Mike Portier
Electrical and
Electronics Inspector*



Greg Marchese
Weld and Structure
Inspector*



Jason Duplechin
Hull and Machinery
Inspector*



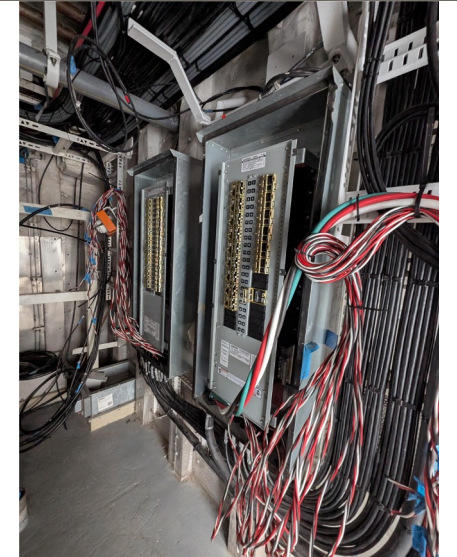
Dan Slobodzian
Lead Technical
Reviewer



Kristin Beem
Marine Science
Technical Director

Delays – 10 Years to Build a 200' Ship?

- Subcontractor default
 - Detail Design/Production Drawings subcontractor
 - Electrical subcontractor (see also next slide)
- Covid-19 Impacts
 - Skilled Labor availability issues (ongoing industry-wide for complex vessels USN, USCG)
 - Disruption to Detail Design Effort (7-9 month effort took 18 months)
- Hurricane Ida (major impacts at shipyard and surrounding area)
 - Skilled Labor availability issues (ongoing) (lack of lower-income housing)
 - Threat of future storms has impacted desirability of area
 - 6-month immediate pause in construction
- National shipbuilding industry at all time low, struggling to recover. (USCG now buying icebreakers from Finland)





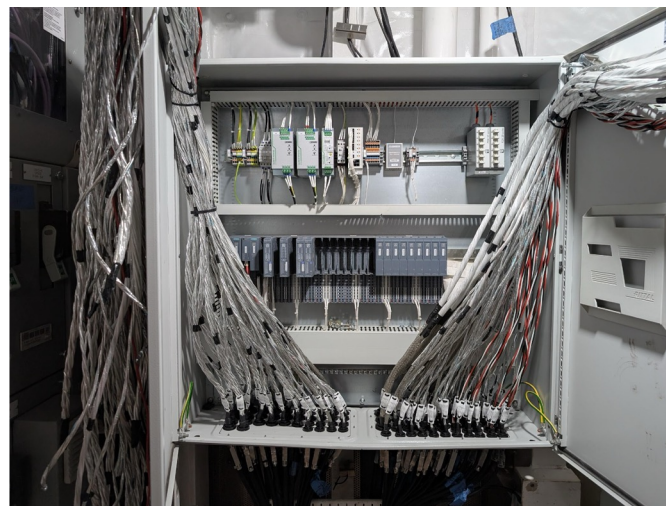
Electrical Subcontractor Challenges

- Original subcontractor defaulted on V2 and V3 in May of 2024. Shipyard attempted to rebid, then unsuccessfully tried to do in-house with sub-contractor labor.
- May 2025 shipyard defaulted V1 subcontractor due to very poor performance. Subsequently hired new vendor to correct installation issues (misrouting, cable damage) and finish work
- September 2025 Shipyard hired V1 subcontractor to do V2 and V3 with some schedule relief and financial assistance from OSU. New contract delivery dates for V2 and V3 similar to OSU’s ”estimated” dates. No real change in actual delivery.
- Very complex electrical design:

Vessel	CABLE COUNT	CABLE (FT)	Useable Internal Volume (Cubic Feet)	Cable Weight (Lbs.)
RCRV (199'-6")	7,156	~544,000	170,149	108,400
RV SIKULIAQ (261')	6,758	~684,000	344,609	-
RV DAVID PACKARD (164')	-	-	156,294	54,000



R/V TAANI Build Update



- Cable pulling & cut in/terminations to boxes & meggering cables. New electrical sub-contractor that is very dedicated to craftsmanship and meeting deadlines
 - To date 91.96% cable pulled & 368 cables ran into a cabinet 16 cables terminated 135 cables meggered (1.91%)
- Starting to power systems on (working through the lighting systems now and will progress to commissioning the mechanical systems as the power is distributed through the ship)
- All the OHS equipment is installed. Working on alignment of the A-Frame, Hydro Winch/LARS alignment, and completion of piping systems.



R/V Narragansett Dawn Build Update



- Installed Main Crane & conducted the bulk of the work for the Vessel Survey (benchmarks and offsets for MGCs/MRUs) in August this year.
- Pulling cable (efforts started under former contractor and is now restarting under the new sub-contractor)
- Started flushing piping and blasting/painting tanks while the ship is still inside the building saving time
- As missing foundations brackets, wireways, or various items are identified on *R/V Taani*, those lessons are applied almost immediately to Vessels 2 & 3
- **Launch** scheduled for Spring 2026





R/V *Gilbert R. Mason*



- All the modules have been erected. Finishing aluminum superstructure and stern module erection joints, working piping systems across the erection joints, and installing wireways.
- Applying lessons learned from the first two vessels & going very quickly
- Installing the Z-drives in the next few weeks and just completed welding out the sonar flat.
- Expect to start pulling cable in 1st quarter of 2026



Regional Class Research Vessel Transition to Operations Phase IV



Daryl Swensen
Transition to Ops. Coordinator



Don Hilliard
Fleet Engineer



Chris Romsos
Datapresence Systems Engineer

75% RCRV



Yvan Alleau
Logistics Specialist



Jasmine Nahorniak
Assistant Datapresence Systems Engineer

30% RCRV



Kris Saathoff
Buyer

80% RCRV



James Caison
Design Specialist



Tristan King
Data Systems Specialist

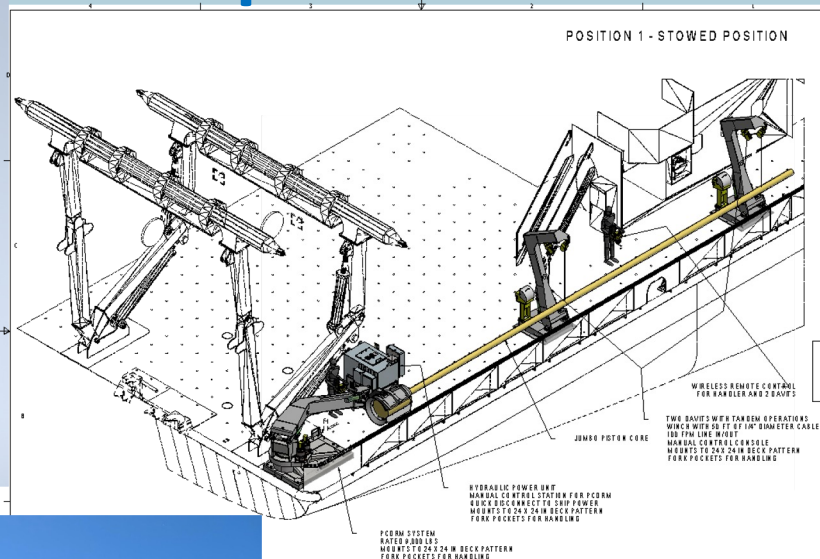
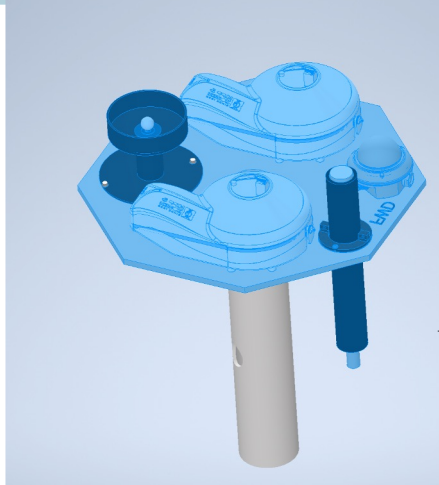
10% RCRV

Transition to Operations

Operations and Science Trials Update

Design Build Progress

- Accommodation Modules
- CTD Frame
- Piston Coring Deployment and Recovery System
- Lab Benches
- Sensor Mounting
- Hazardous Material Lockers



Operations and Science Trials

- Communication with support stakeholders
- Refinement of Test Matrix
- Field testing
 - Apollo ASP3 pCO2 System
 - R/V *Sikuliaq*
- CORIOLIX Integration





[Webcam 01](#)
[Webcam 02](#)
[Webcam 03](#)
[Webcam 04](#)
[Webcam 06](#)
[Webcam 08](#)

RCRV Update

Regional Class Research Vessel Program- Oregon State University

November 06, 2025



@Regional Class Research Vessel Program



@rcrv_program