



# *RCRV Project Update for RVOC*

Ethan Roth, OSU Director of Marine Operations, 30 April 2025

---





# Regional Class Research Vessel - Project Field Office- Bollinger Shipyard- Houma, LA



John Comar  
Shipyard  
Representative



Hannah Rivera  
Program Administration  
Coordinator



Russ Morton  
Deputy Shipyard  
Representative



Greg Marchese  
Weld and Structure  
Inspector\*



Mike Portier  
Electrical and  
Electronics Inspector\*



Jason Duplechin  
Hull and Machinery  
Inspector\*



Dan Slobodzian  
Lead Engineer for  
Inspection & Test



Kristin Beem  
Marine Science  
Technical Director

\*Indicates Subcontractors to OSU





# Regional Class Research Vessel Transition to Operations Phase IV



Daryl Swensen  
Transition to Ops. Coordinator



Chris Romsos  
Datapresence Systems Engineer



Jasmine Nahorniak  
Assistant Datapresence Systems Engineer



James Caison  
Design Specialist



Don Hilliard  
Fleet Engineer



Yvan Alleau  
Logistics Specialist



Kris Saathoff  
Buyer



Tristan King  
Data Systems Specialist





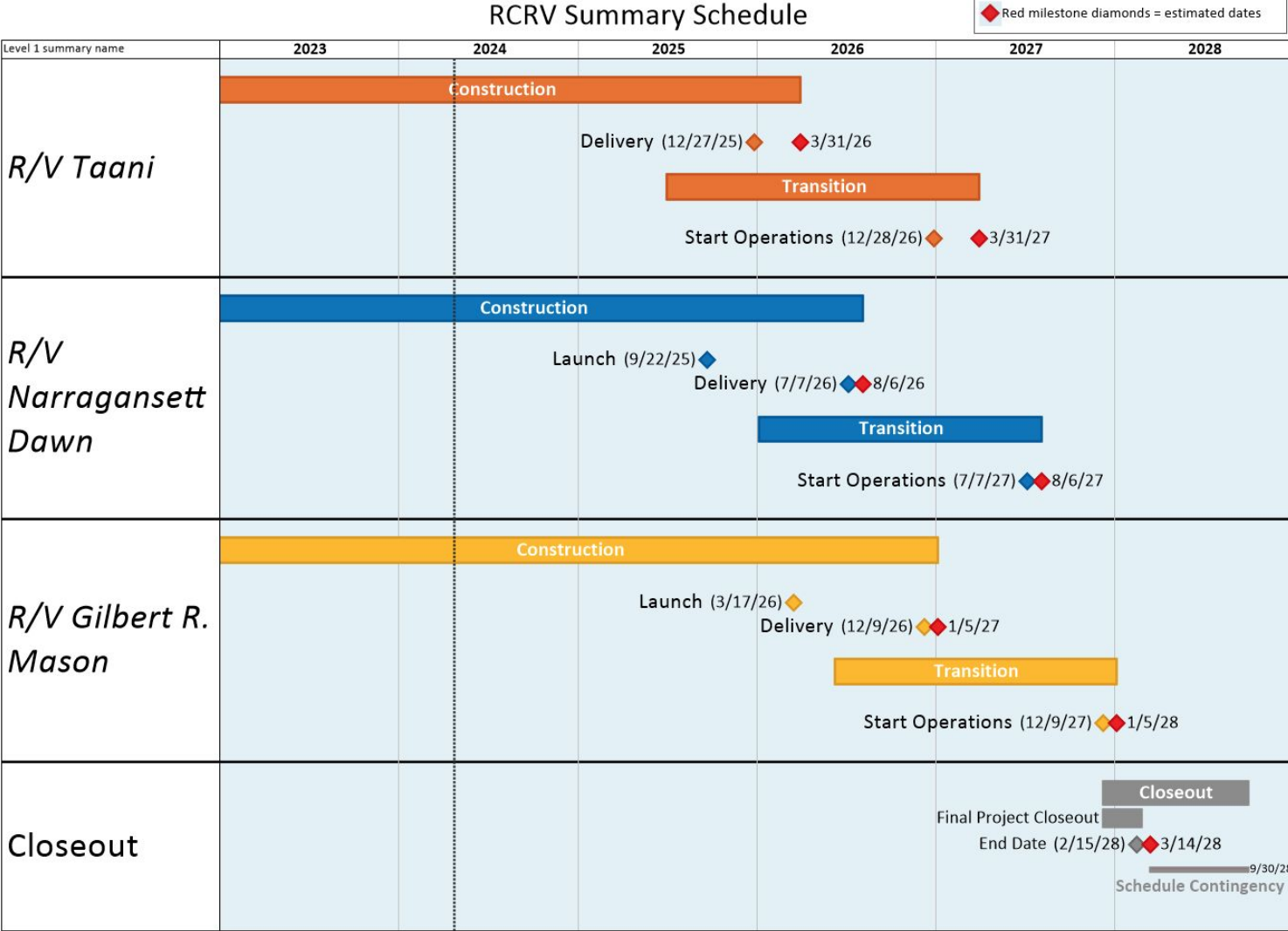
# Shipyard Baseline Schedule

## Estimated Schedule Delivery

R/V Taani  
03/31/2026

R/V Narragansett Dawn  
08/06/2026

R/V Gilbert R. Mason  
01/05/2027







# Vessel Updates

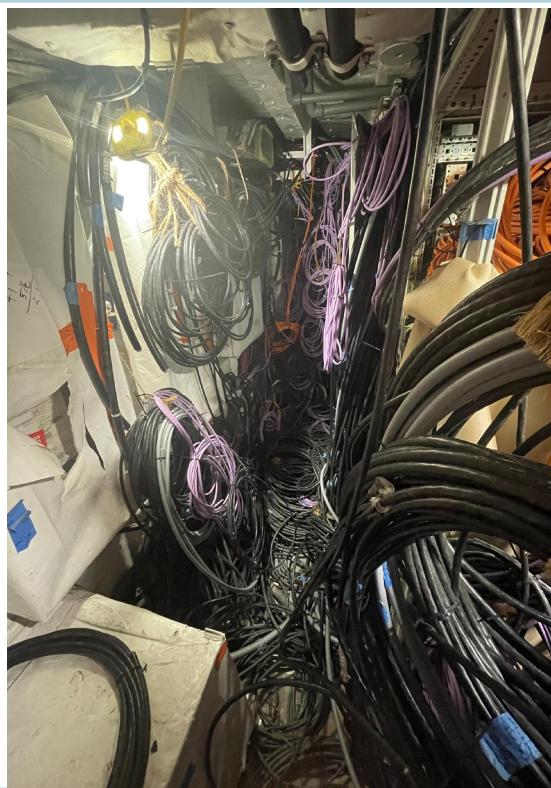


2025-01-21 15:34:28 CT



# R/V Taani

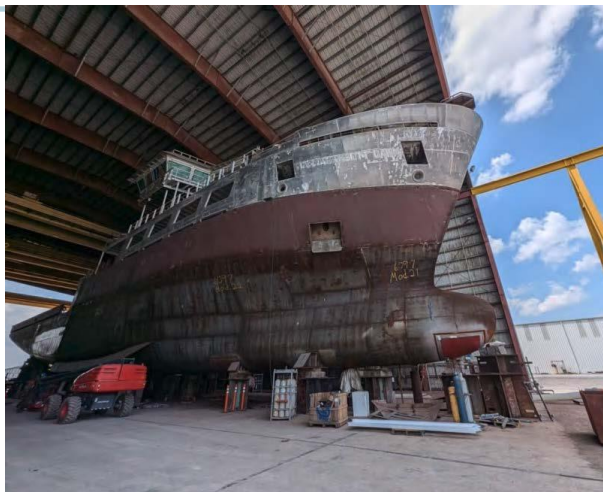
- Subcontractor Work
  - Wiring, Insulation, Painting
- Wiring Progress
  - 6,050 Cables
  - 157 km of Cable
  - 84% pulled
  - .27% Terminated and Tested
- Deck Socket Repair
  - Ensuring UNOLS standard in tolerance.
- Pipe Flushing
- Insulation and Joiner Work
- OHS equipment installation and alignment
- Portable Equipment Fit up





# R/V *Narragansett Dawn*

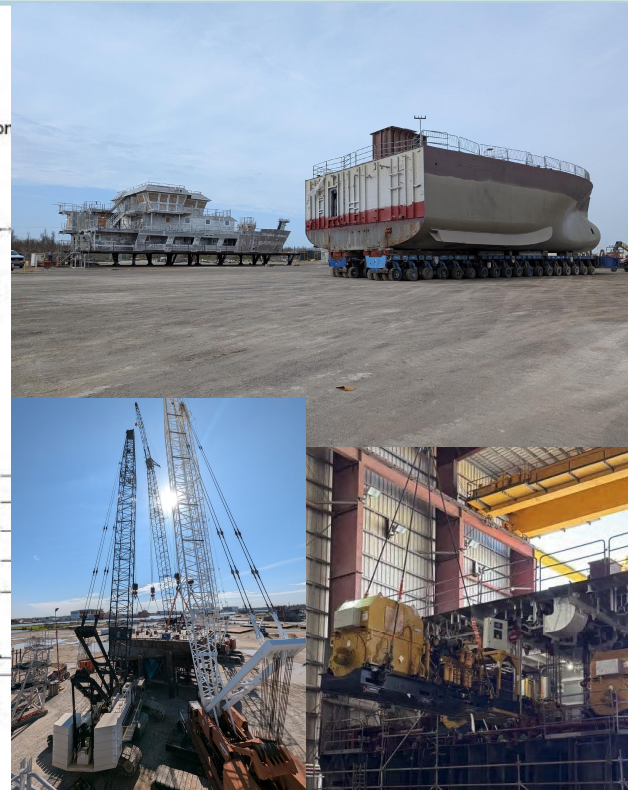
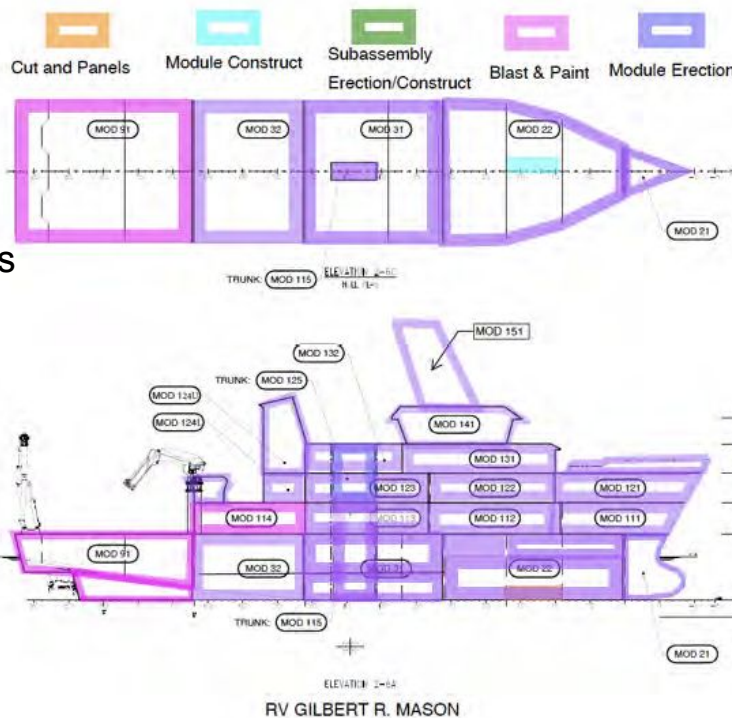
- Cable Pulling Underway
- Z-Drive Installation Completed
- Sonar Flat Installed
- Piping Work Various Modules
- Outfitting Ongoing Various Modules
- Various Painting Work
- Aluminum Centerboard Installed
- OHS Equipment Delivered





# R/V *Gilbert R. Mason*

- Super Mod Erected
  - Erection Weld on 111/112 and 113
- Equipment Installation
- Piping Work Various Modules
- Outfitting Ongoing Various Modules
- Painting Work
- Aluminum Centerboard
  - Staged for Insall
- Sonar Flat in Weld out



# Phase IV Update

## Outfitting All Vessels

- Accommodation Vans
  - Completed
- Hazardous Materials Lockers
  - Completed
- CTD Frame and Sensor Mounting Systems
  - Near Completion
- Lab Outfitting Items
  - Near Completion
- Sensors
  - Completed
- Outfitting Supplies and Equipment
  - Completed







# Operation and Science Trials

- Phase IV Schedule
  - Inspection Support
  - Builders Trials Observation
  - Crew and Tech. Training
  - Vessel Outfitting
  - Operations and Science Trials
  - Warranty Haulout
  - NSF Inspection
  - Ready for Operations
- Integration into MFP for Trials Planning
- Sensor and System Testing Workflow Developed
  - Smartsheet Forms
  - Reporting Process

Page 10

UNOLS Vessel Schedule									
Activity	Start Date	End Date	Start Time	End Time	Location	Personnel	Equipment	Notes	Comments
UNOLS Vessel Schedule	10/1/2023	10/1/2023	08:00	16:00	UNOLS Vessel	UNOLS Vessel	UNOLS Vessel	UNOLS Vessel	UNOLS Vessel
UNOLS Vessel Schedule	10/2/2023	10/2/2023	08:00	16:00	UNOLS Vessel	UNOLS Vessel	UNOLS Vessel	UNOLS Vessel	UNOLS Vessel
UNOLS Vessel Schedule	10/3/2023	10/3/2023	08:00	16:00	UNOLS Vessel	UNOLS Vessel	UNOLS Vessel	UNOLS Vessel	UNOLS Vessel
UNOLS Vessel Schedule	10/4/2023	10/4/2023	08:00	16:00	UNOLS Vessel	UNOLS Vessel	UNOLS Vessel	UNOLS Vessel	UNOLS Vessel
UNOLS Vessel Schedule	10/5/2023	10/5/2023	08:00	16:00	UNOLS Vessel	UNOLS Vessel	UNOLS Vessel	UNOLS Vessel	UNOLS Vessel
UNOLS Vessel Schedule	10/6/2023	10/6/2023	08:00	16:00	UNOLS Vessel	UNOLS Vessel	UNOLS Vessel	UNOLS Vessel	UNOLS Vessel
UNOLS Vessel Schedule	10/7/2023	10/7/2023	08:00	16:00	UNOLS Vessel	UNOLS Vessel	UNOLS Vessel	UNOLS Vessel	UNOLS Vessel
UNOLS Vessel Schedule	10/8/2023	10/8/2023	08:00	16:00	UNOLS Vessel	UNOLS Vessel	UNOLS Vessel	UNOLS Vessel	UNOLS Vessel
UNOLS Vessel Schedule	10/9/2023	10/9/2023	08:00	16:00	UNOLS Vessel	UNOLS Vessel	UNOLS Vessel	UNOLS Vessel	UNOLS Vessel
UNOLS Vessel Schedule	10/10/2023	10/10/2023	08:00	16:00	UNOLS Vessel	UNOLS Vessel	UNOLS Vessel	UNOLS Vessel	UNOLS Vessel
UNOLS Vessel Schedule	10/11/2023	10/11/2023	08:00	16:00	UNOLS Vessel	UNOLS Vessel	UNOLS Vessel	UNOLS Vessel	UNOLS Vessel
UNOLS Vessel Schedule	10/12/2023	10/12/2023	08:00	16:00	UNOLS Vessel	UNOLS Vessel	UNOLS Vessel	UNOLS Vessel	UNOLS Vessel
UNOLS Vessel Schedule	10/13/2023	10/13/2023	08:00	16:00	UNOLS Vessel	UNOLS Vessel	UNOLS Vessel	UNOLS Vessel	UNOLS Vessel
UNOLS Vessel Schedule	10/14/2023	10/14/2023	08:00	16:00	UNOLS Vessel	UNOLS Vessel	UNOLS Vessel	UNOLS Vessel	UNOLS Vessel
UNOLS Vessel Schedule	10/15/2023	10/15/2023	08:00	16:00	UNOLS Vessel	UNOLS Vessel	UNOLS Vessel	UNOLS Vessel	UNOLS Vessel
UNOLS Vessel Schedule	10/16/2023	10/16/2023	08:00	16:00	UNOLS Vessel	UNOLS Vessel	UNOLS Vessel	UNOLS Vessel	UNOLS Vessel
UNOLS Vessel Schedule	10/17/2023	10/17/2023	08:00	16:00	UNOLS Vessel	UNOLS Vessel	UNOLS Vessel	UNOLS Vessel	UNOLS Vessel
UNOLS Vessel Schedule	10/18/2023	10/18/2023	08:00	16:00	UNOLS Vessel	UNOLS Vessel	UNOLS Vessel	UNOLS Vessel	UNOLS Vessel
UNOLS Vessel Schedule	10/19/2023	10/19/2023	08:00	16:00	UNOLS Vessel	UNOLS Vessel	UNOLS Vessel	UNOLS Vessel	UNOLS Vessel
UNOLS Vessel Schedule	10/20/2023	10/20/2023	08:00	16:00	UNOLS Vessel	UNOLS Vessel	UNOLS Vessel	UNOLS Vessel	UNOLS Vessel
UNOLS Vessel Schedule	10/21/2023	10/21/2023	08:00	16:00	UNOLS Vessel	UNOLS Vessel	UNOLS Vessel	UNOLS Vessel	UNOLS Vessel
UNOLS Vessel Schedule	10/22/2023	10/22/2023	08:00	16:00	UNOLS Vessel	UNOLS Vessel	UNOLS Vessel	UNOLS Vessel	UNOLS Vessel
UNOLS Vessel Schedule	10/23/2023	10/23/2023	08:00	16:00	UNOLS Vessel	UNOLS Vessel	UNOLS Vessel	UNOLS Vessel	UNOLS Vessel
UNOLS Vessel Schedule	10/24/2023	10/24/2023	08:00	16:00	UNOLS Vessel	UNOLS Vessel	UNOLS Vessel	UNOLS Vessel	UNOLS Vessel
UNOLS Vessel Schedule	10/25/2023	10/25/2023	08:00	16:00	UNOLS Vessel	UNOLS Vessel	UNOLS Vessel	UNOLS Vessel	UNOLS Vessel
UNOLS Vessel Schedule	10/26/2023	10/26/2023	08:00	16:00	UNOLS Vessel	UNOLS Vessel	UNOLS Vessel	UNOLS Vessel	UNOLS Vessel
UNOLS Vessel Schedule	10/27/2023	10/27/2023	08:00	16:00	UNOLS Vessel	UNOLS Vessel	UNOLS Vessel	UNOLS Vessel	UNOLS Vessel
UNOLS Vessel Schedule	10/28/2023	10/28/2023	08:00	16:00	UNOLS Vessel	UNOLS Vessel	UNOLS Vessel	UNOLS Vessel	UNOLS Vessel
UNOLS Vessel Schedule	10/29/2023	10/29/2023	08:00	16:00	UNOLS Vessel	UNOLS Vessel	UNOLS Vessel	UNOLS Vessel	UNOLS Vessel
UNOLS Vessel Schedule	10/30/2023	10/30/2023	08:00	16:00	UNOLS Vessel	UNOLS Vessel	UNOLS Vessel	UNOLS Vessel	UNOLS Vessel
UNOLS Vessel Schedule	10/31/2023	10/31/2023	08:00	16:00	UNOLS Vessel	UNOLS Vessel	UNOLS Vessel	UNOLS Vessel	UNOLS Vessel







[Webcam 01](#)  
[Webcam 02](#)  
[Webcam 03](#)  
[Webcam 04](#)  
[Webcam 06](#)  
[Webcam 08](#)

## RVOC Update

Regional Class Research Vessel Program- Oregon State University

*April 30, 2025*