



U.S. National Ice Center

Arctic Icebreaker Coordinating Committee Winter Meeting



USN



USCG

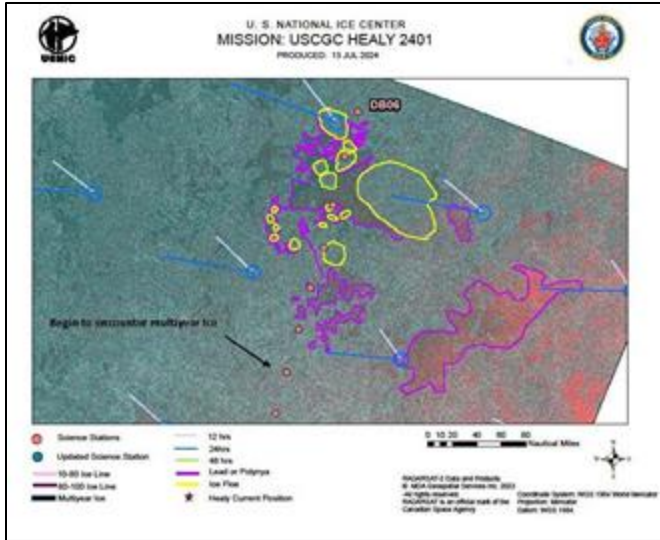


NOAA

***Director: CDR Travis Wendt, USN
Deputy Director: Mr. Kevin Berberich, NOAA
Presenter: Britney Fajardo, Master Ice Analyst
January 8, 2025***



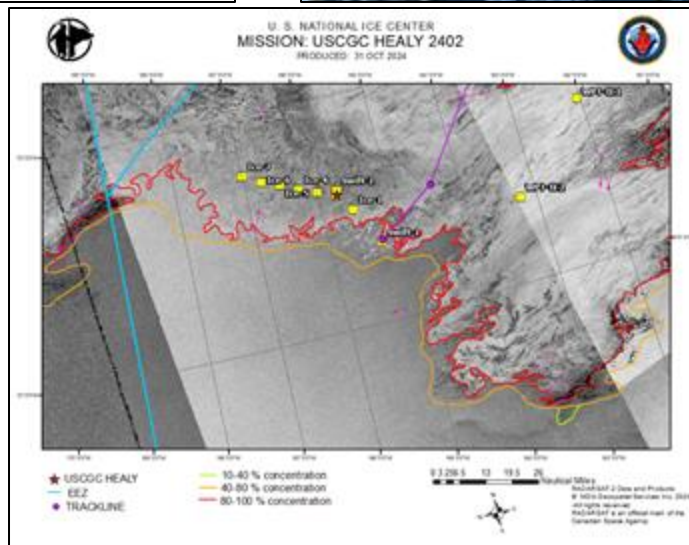
Healy 2401 and 2402



Analysts onboard the USCGC Healy provided real-time support during Healy's 2024 summer and fall deployments in the Beaufort Sea. Product requirements were adjusted as the missions evolved.

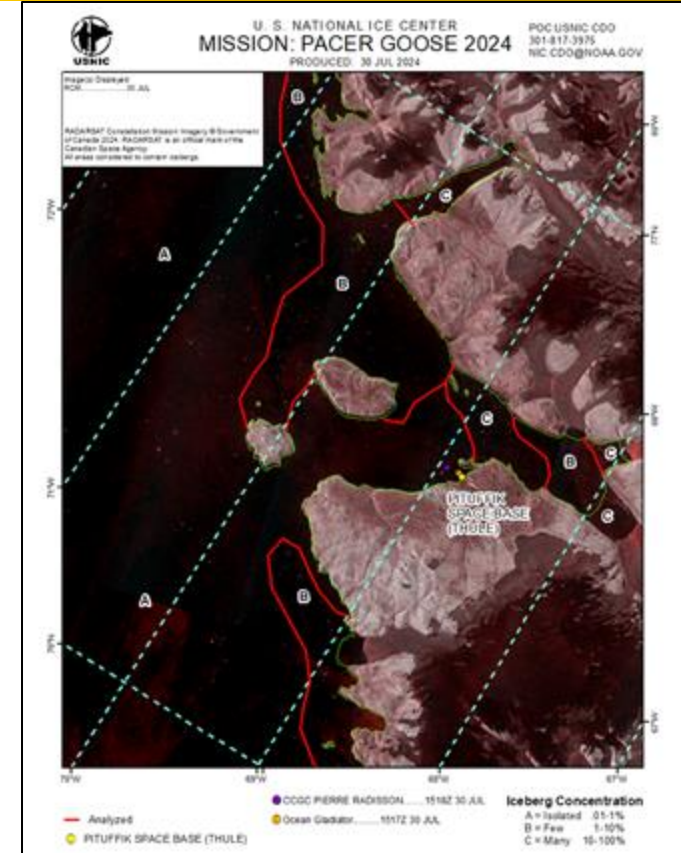
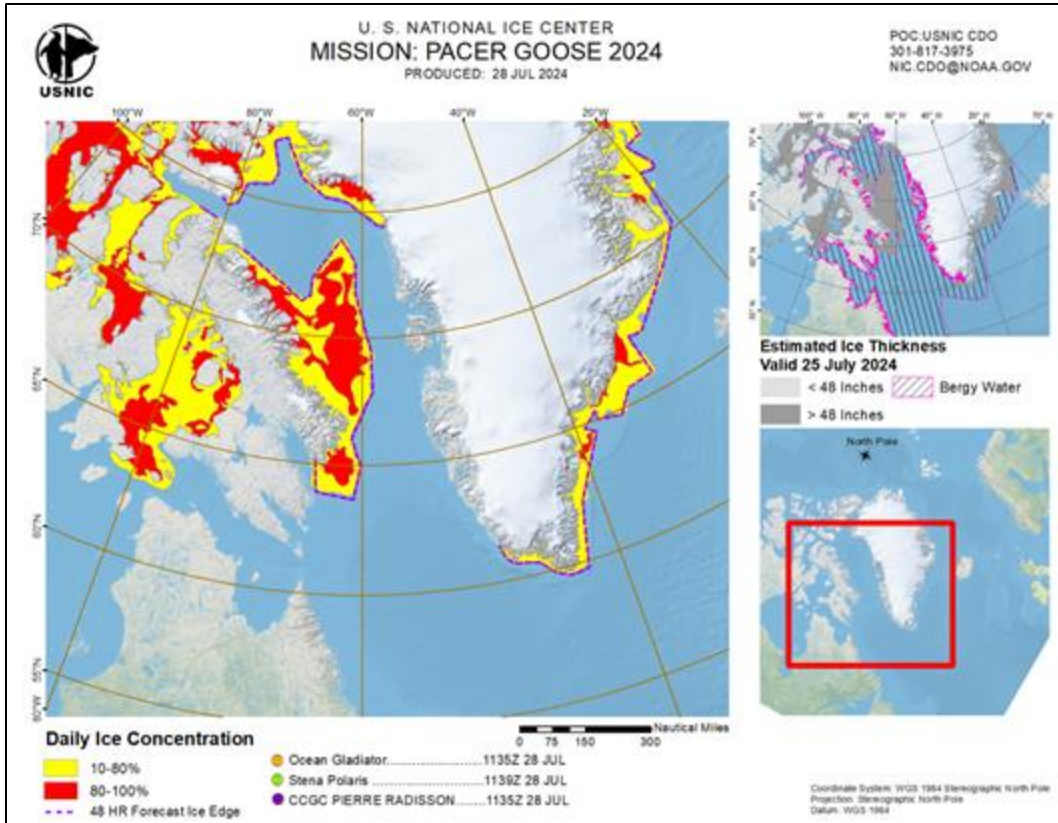
While onboard, USNIC analysts:

- Assisted with route planning for sea ice transits
- Provided daily briefs to Captain and department heads
- Provided analyzed imagery to watchstanders for situational awareness
- Were available at all hours for ice support during science missions





Pacer Goose 2024

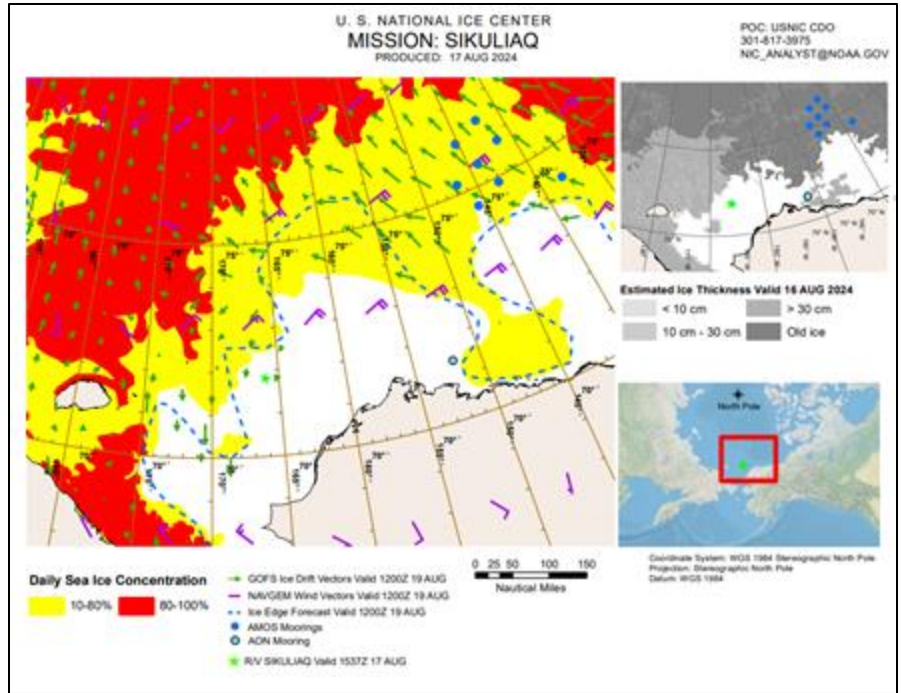
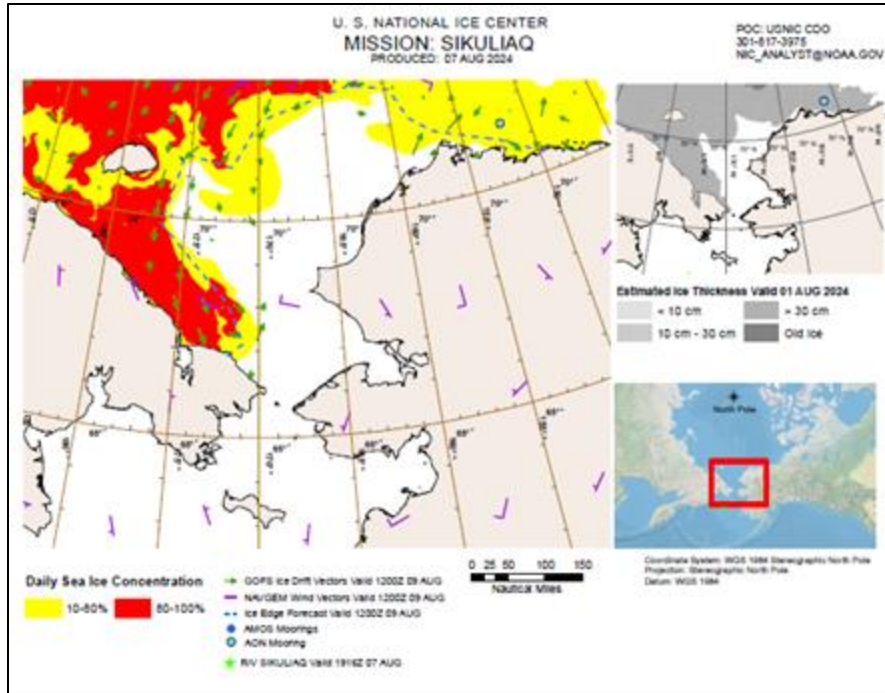


USNIC supported Ocean Gladiator, Stena Polaris, and CCGC Pierre Radisson for Pacer Goose 2024.

Pre-sail brief was also provided, covering current conditions and expected conditions based on climatology and Navy ESPC model data.



SIKULIAQ 2024

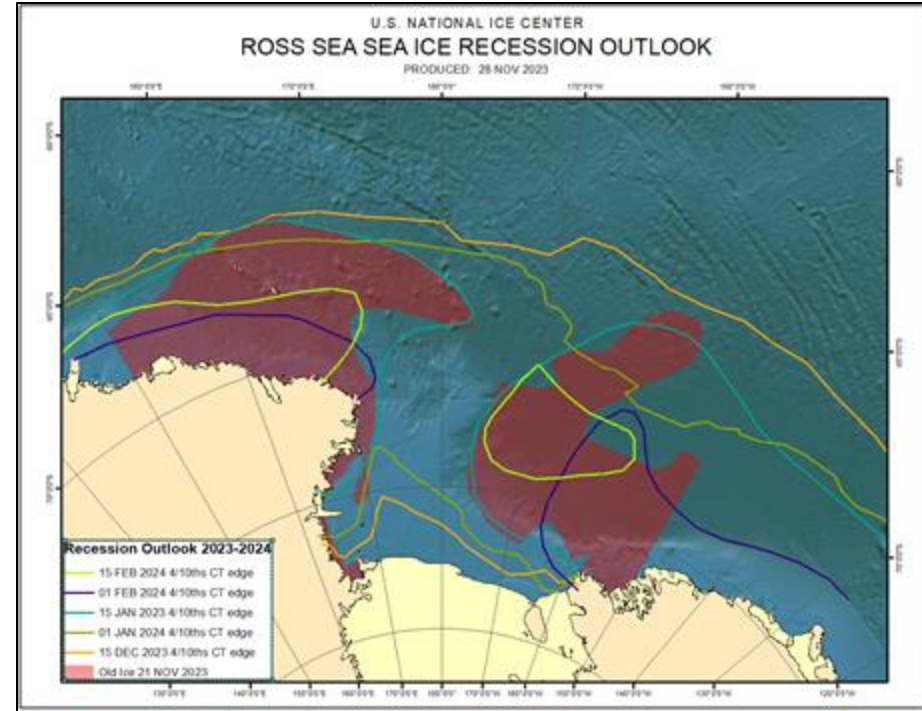
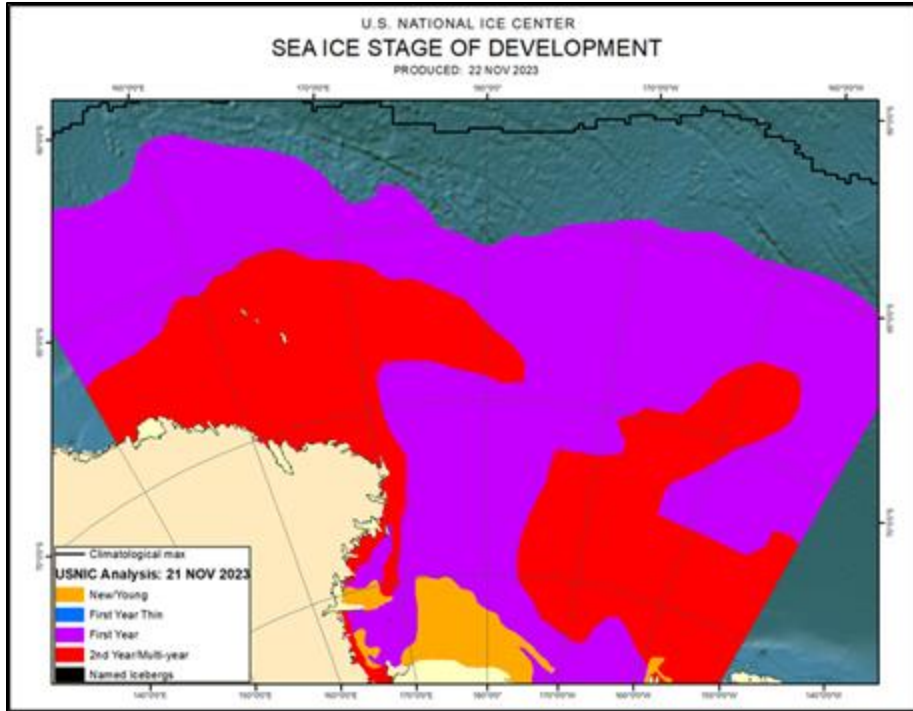


USNIC provided daily Marginal Ice Zone (MIZ) support to SIKULIAQ, showing the pack ice conditions and 48 hour forecasted ice edge, winds, and sea ice drift.

National Weather Service's Alaska Sea Ice Program had an analyst onboard to provide detailed support.



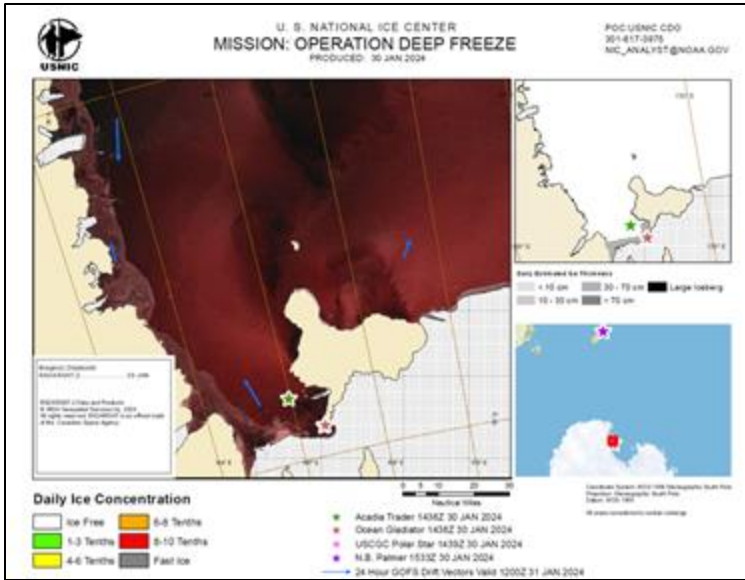
Deep Freeze Support 2023-2024



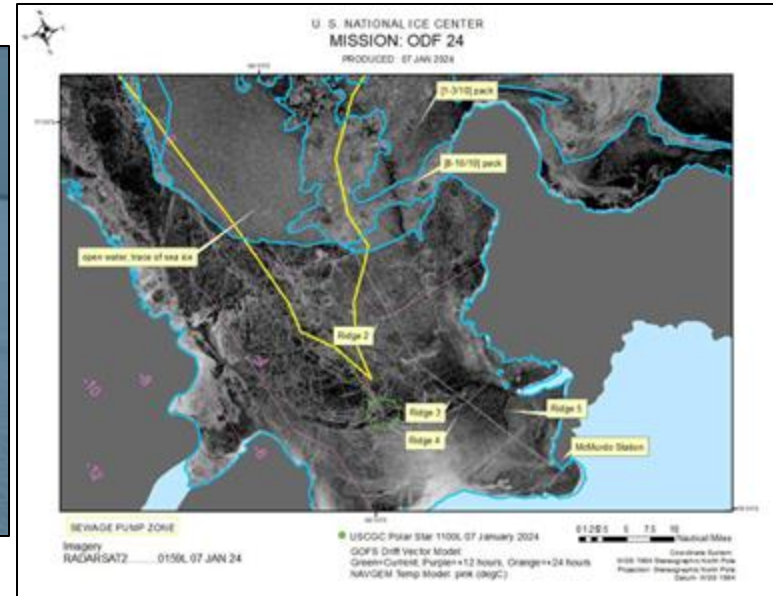
Prior to the start of Operation Deep Freeze 2024, USNIC provided a Ross Sea Outlook to the USCGC Polar Star and other customers with interest in the area, highlighting current sea ice conditions and expected sea ice melt pattern.



Deep Freeze Support 2023-2024



USNIC Remote Support

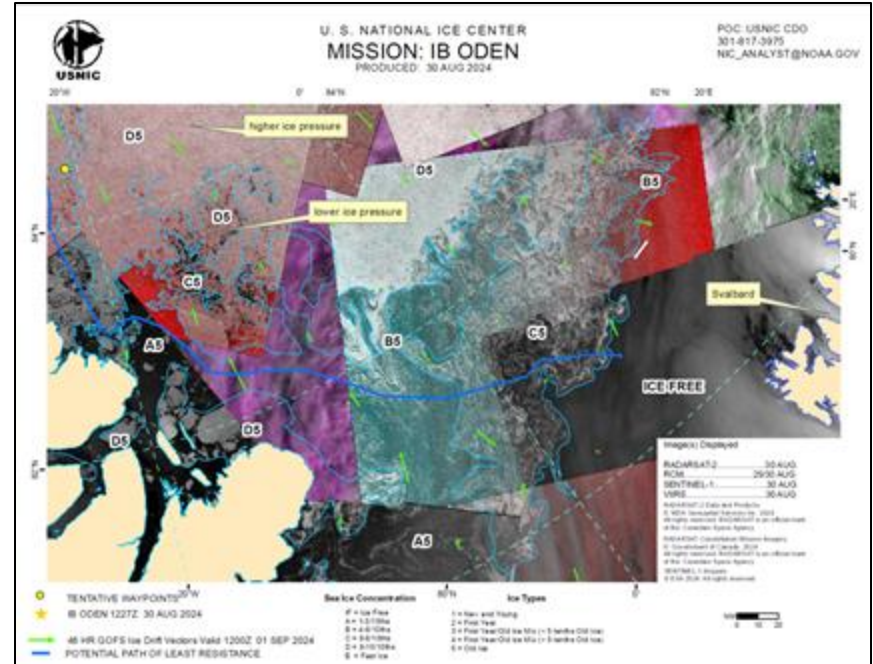
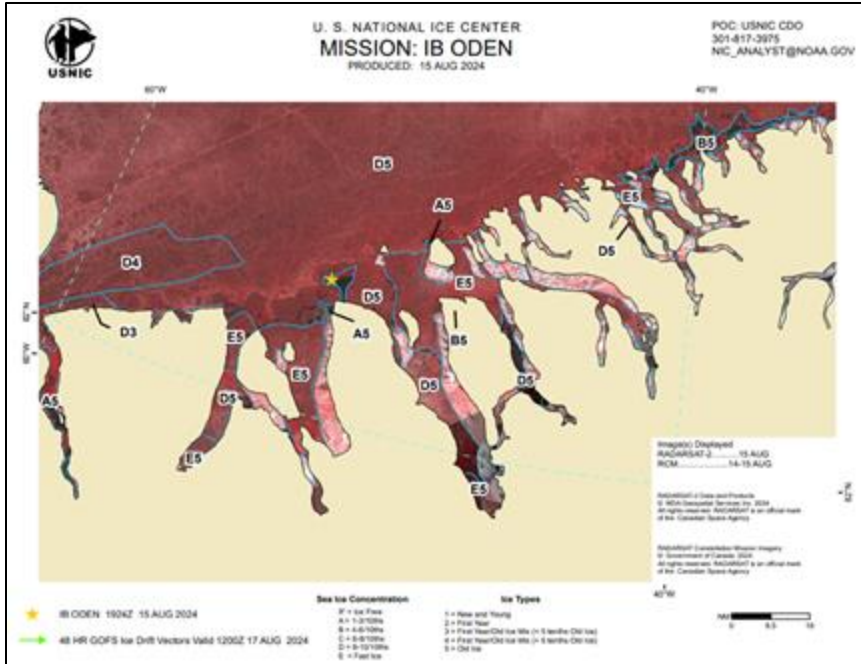


Onboard Analyst Support

USNIC analyst onboard the USCGC Polar Star provided daily products to the operations team onboard the ship. Main analysis focus was finding best way to break through fast ice in McMurdo Sound, as well as ridge avoidance and keeping channels clear of ice for the non-ice hardened vessels to be able to pass through.



ODEN 2024



Provided daily detailed support to IB Oden for their operations in the northern Greenland Sea for their Greenland Earth-Ocean Ecosystem Observatory cruise.



Request for Support



Contact Information

Agency*

Name*

Email*

Phone

Best times to contact you

Request Details

Area of interest*
Liaison will be in contact for additional detail (if approved).

Dates required for services*

List of needed ice parameters

Vessel Limitations

Mission Goal*

Additional users to be added to dissemination list

Delivery Information

Frequency*

Time Product is needed*
Times are in EST, USMC working hours: 8am to 4pm

Format*

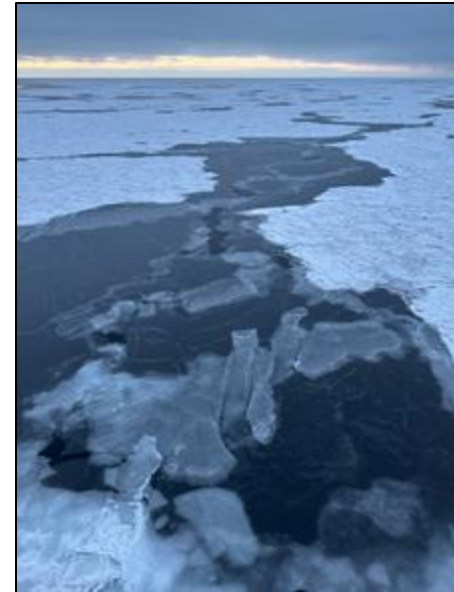
How do you need the data disseminated*
Secured ftp is not guaranteed as there is an approval process for this done through NOAA.

How will you be using the data

<https://usicecenter.gov/Resources/TailoredSupportForm>



Questions and Comments



Command Duty Officer
nic_analyst@noaa.gov
nic.cdo@navy.smil.mil

Watchfloor: (301) 817-3975
CDO: (301) 943-6977

www.usicecenter.gov