



RCRV Update RVTEC 2024



Regional Class Research Vessel Program- Oregon State University

October 24 2024

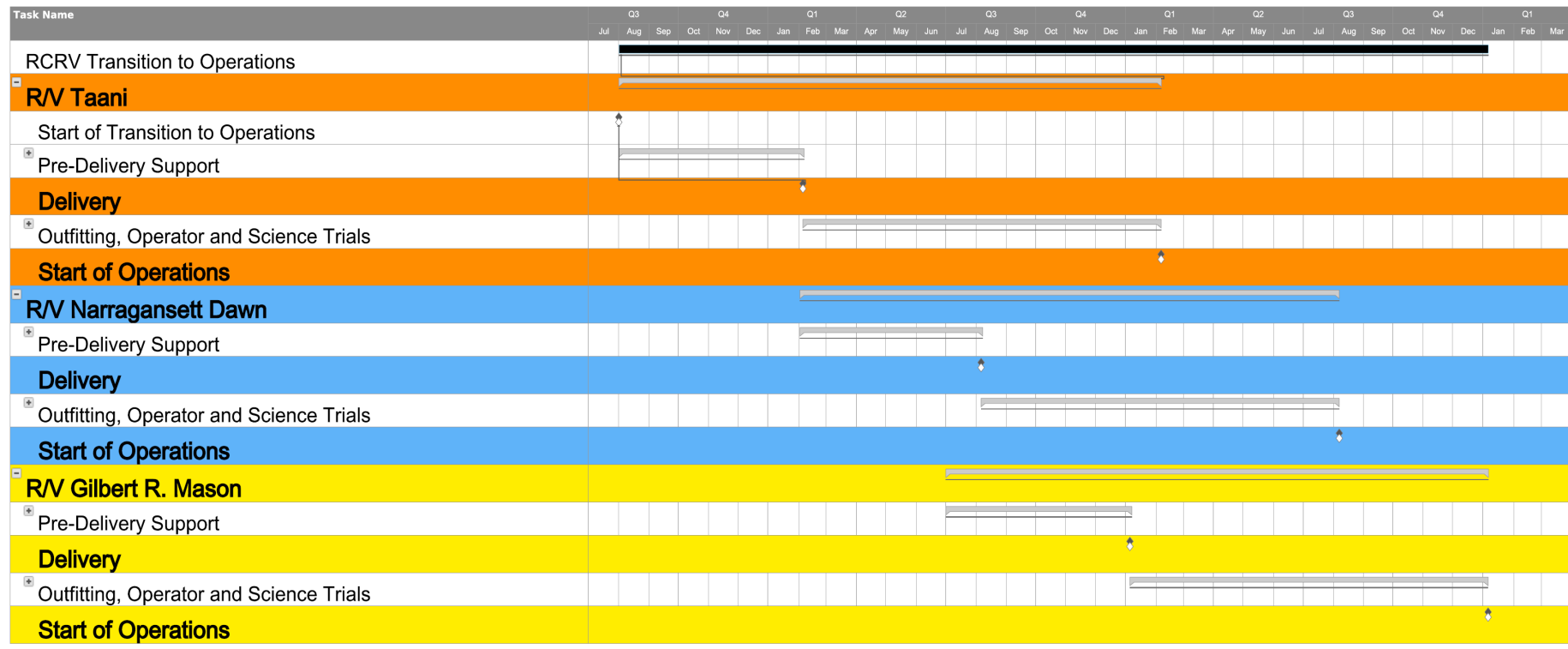




RCRV Estimated Schedule Q3-24



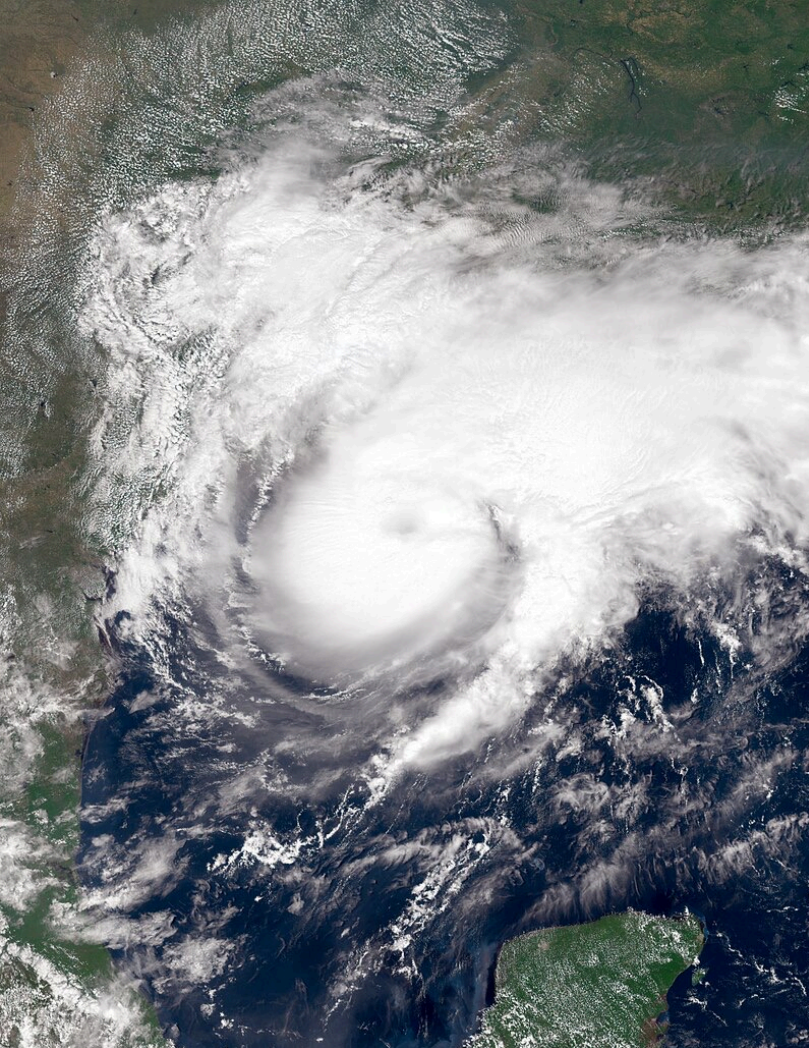
Phase IV Estimated TtoO Schedule Q3-24 RVTEC



- **R/V Taani**
 - Start of Transition to Operations
 - **08/01/2024**
 - Vessel Delivery
 - **02/05/2026**
 - Start of Operations
 - **02/05/2027**
- **R/V Narragansett Dawn**
 - Start of Transition to Operations
 - **02/02/2026**
 - Vessel Delivery
 - **08/06/2026**
 - Start of Operations
 - **08/06/2027**
- **R/V Gilbert R. Mason**
 - Start of Transition to Operations
 - **07/01/2026**
 - Vessel Delivery
 - **01/05/2027**
 - Start of Operations
 - **01/05/2028**



Hurricane Francine September 11, 2024



- Category 2
- Max wind 100 mph
- 10 in. rainfall
- Widespread power outages
- Flooding

BHS yard infrastructure improvements reduced damage to the yard.

BHS Paint Tent: Fabric cover destroyed.



RV Taani

Hull paint and metal gouged at waterline from impacting dock wall. Sheet pile dock wall only has 2-3' of freeboard normally. It appears the fenders rode over the top of the wall, allowing the hull to hit sheet pile.

Assorted spaces with minor insulation damage due to small openings in deck or exterior bulkhead.

No damage to other vessels but unknown labor impacts and new delays.

R/V TAANI Build Update



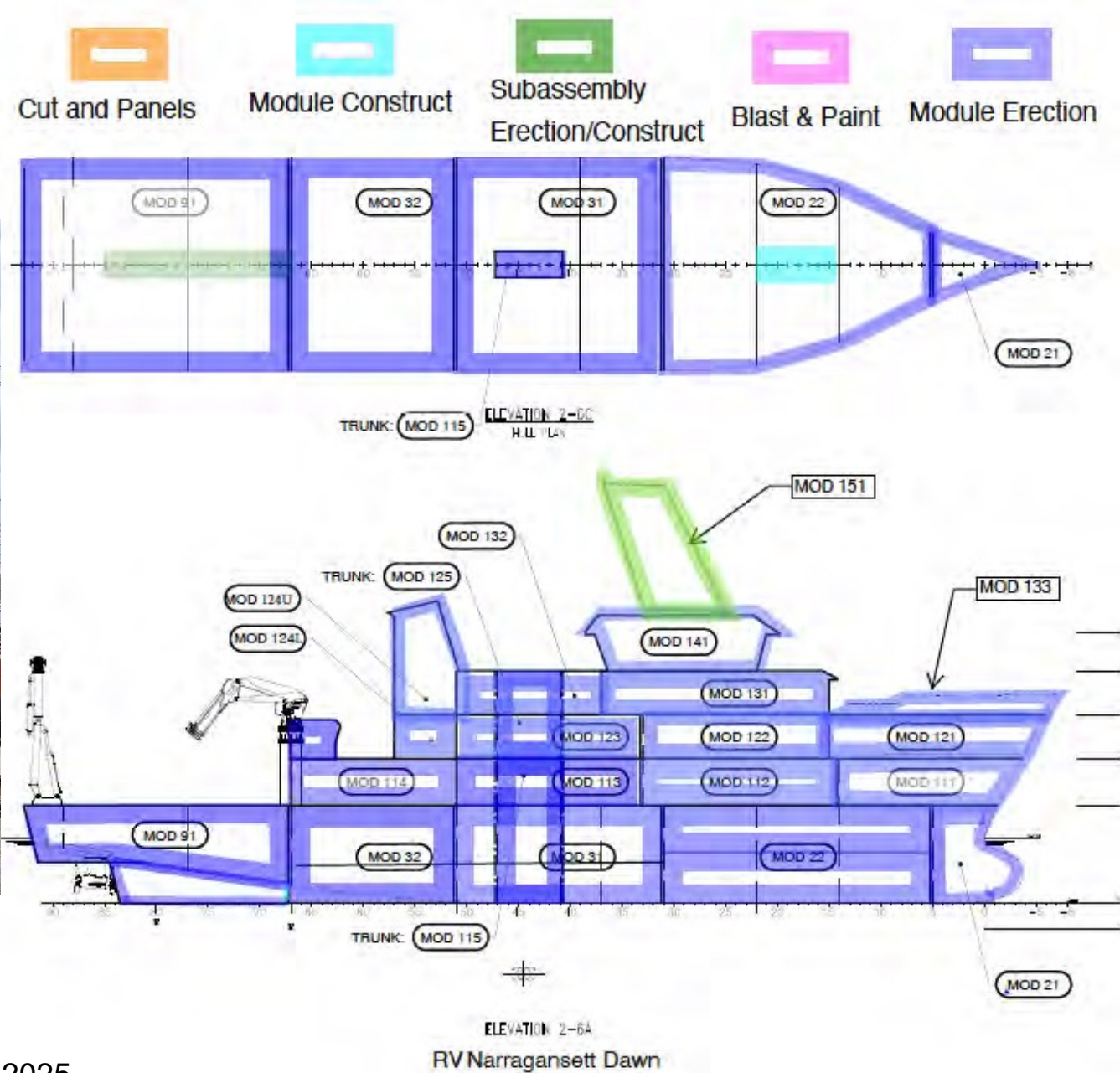
- Construction 86% complete as of September Data.
- Wiring, Wiring, Wiring!
 - 76% complete, 157 km total cable.
- OHS Equipment installed
 - Winches, Main Crane, LARS, A-Frame Started
- Preparation for: Termination and testing, energizing, integration, shipyard testing



R/V Narragansett Dawn Build Update



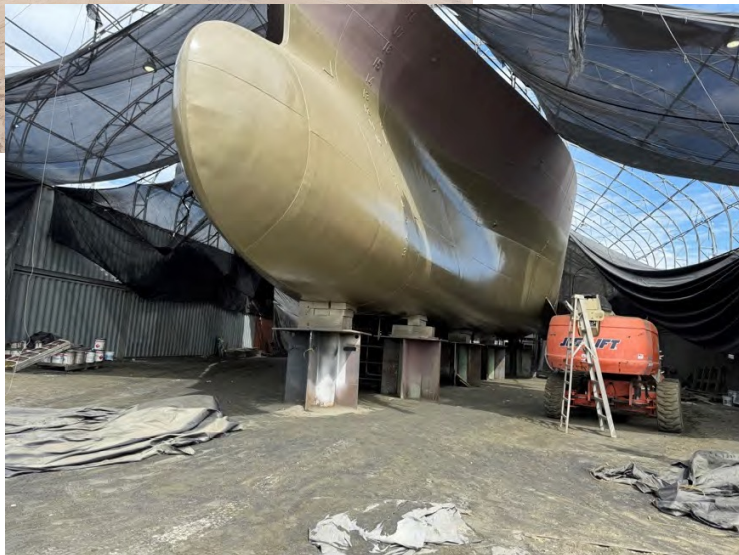
- Construction 79% complete as of September Data.
- Aluminum Superstructure erected in March 2024
- Sonar flat and z-drives installed
- Outfitting ongoing
- **Launch** scheduled for March 2025



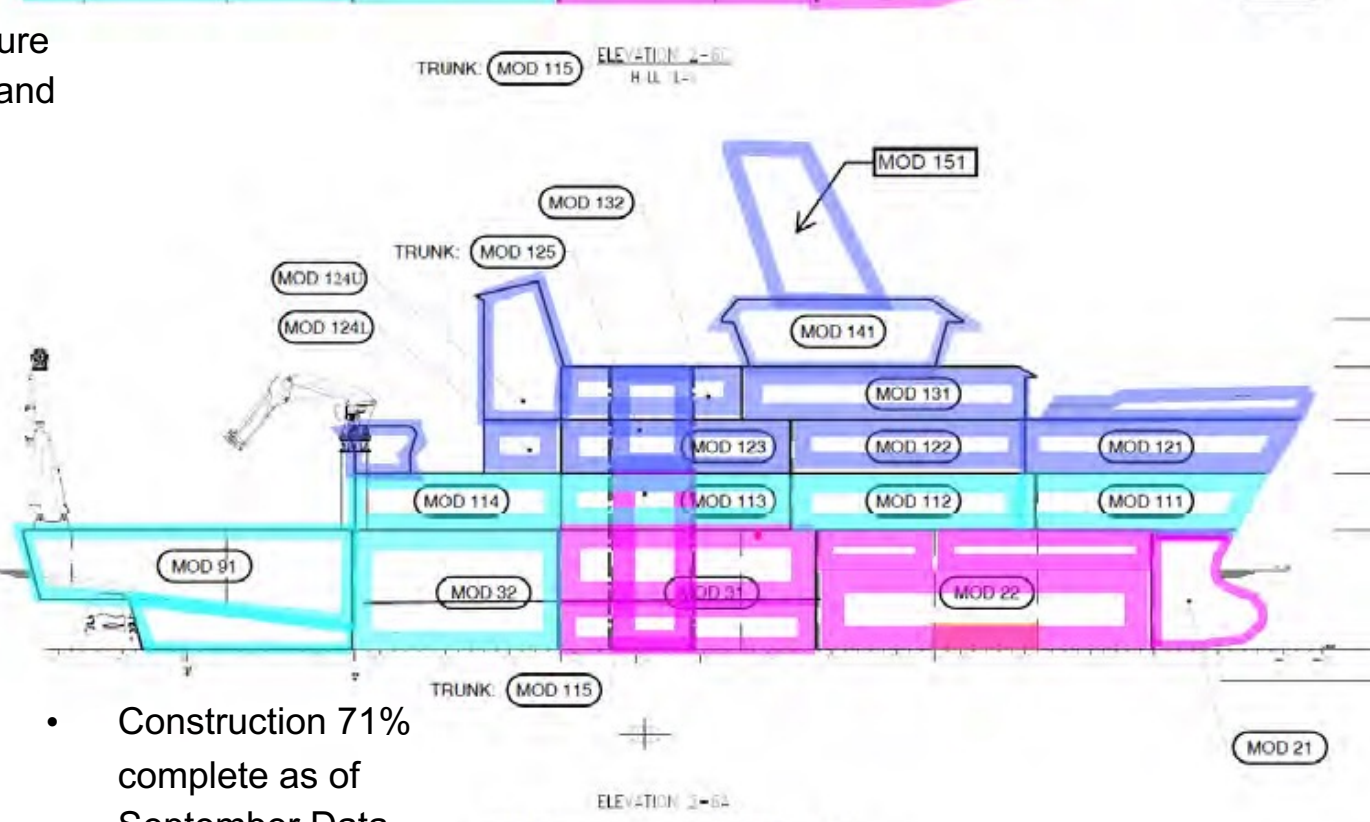
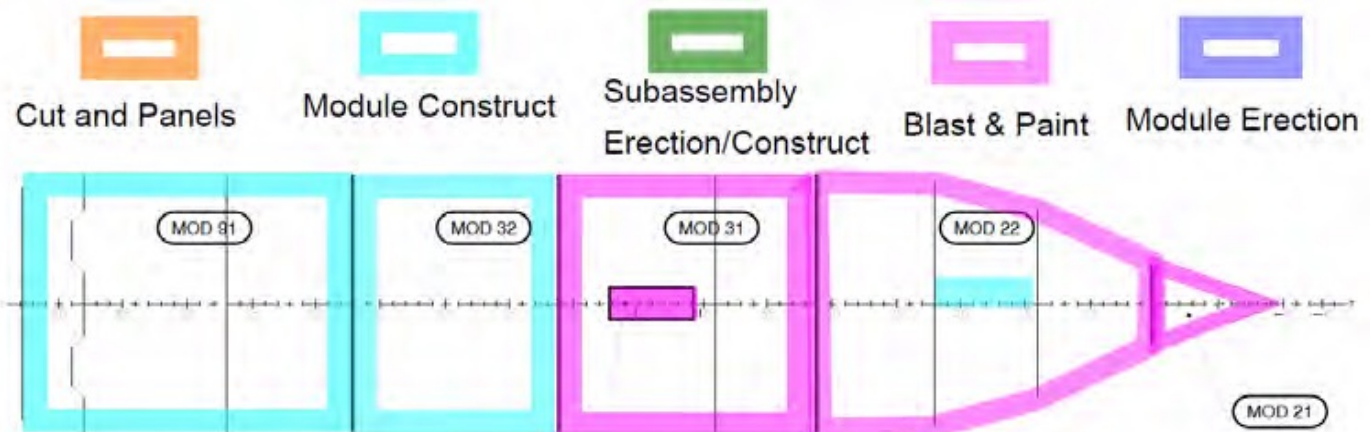
R/V Gilbert R. Mason



- Aluminum superstructure completed and moved to Houma for erection



- Steel supermodule moved to blast and paint on August 2024.



- Construction 71% complete as of September Data.

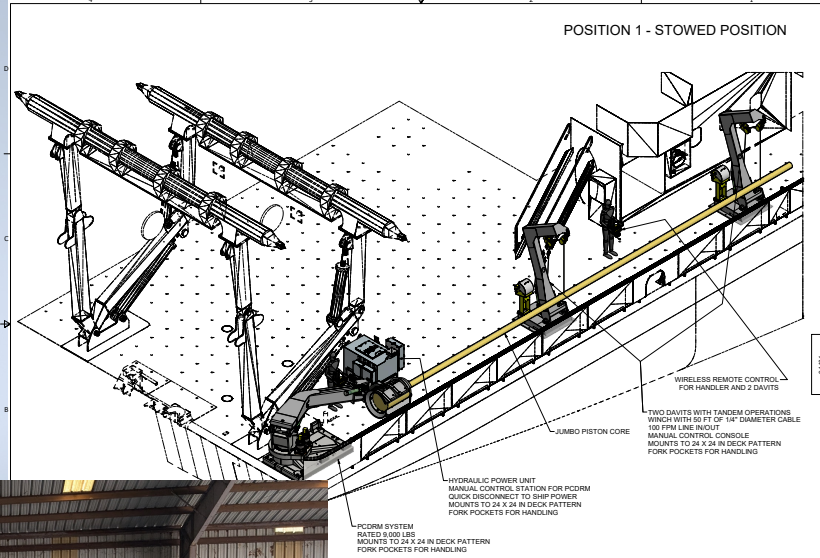
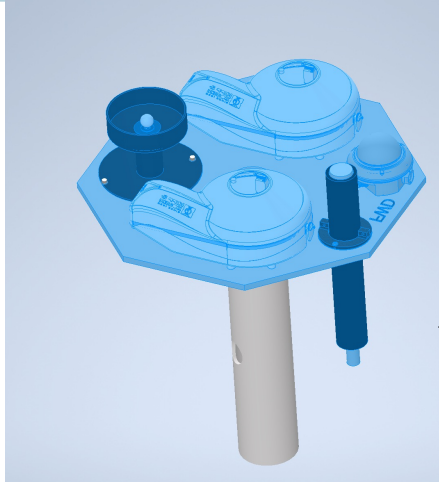
RV GILBERT R. MASON

Transition to Operations

Operations and Science Trials Update

Design Build Progress

- Accommodation Modules
- CTD Frame
- Piston Coring Deployment and Recovery System
- Lab Benches
- Sensor Mounting
- Hazardous Material Lockers
- Cold Stores Van



Operations and Science Trials

- Communication with support stakeholders
- Refinement of Test Matrix
- Field testing
 - Apollo ASP3 pCO2 System
 - R/V *Sikuliaq*
- CORIOLIX Integration





Regional Class Research Vessel - Project Field Office- Bollinger Shipyard- Houma, LA

*Indicates Subcontractors to OSU



John Comar
Shipyard
Representative



Hannah Rivera
Program Administration
Coordinator



Russ Morton
Deputy Shipyard
Representative / Lead
Inspector



Olan Cobb
Electrical Inspector*



Mike Portier
Electrical and
Electronics Inspector*



Greg Marchese
Weld and Structure
Inspector*



Jason Duplechin
Hull and Machinery
Inspector*



Dan Slobodzian
Lead Technical
Reviewer



Kristin Beem
Marine Science
Technical Director





Regional Class Research Vessel Transition to Operations Phase IV



Daryl Swensen
Transition to Ops. Coordinator



Don Hilliard
Fleet Engineer



Chris Romsos
Datapresence Systems Engineer



Yvan Alleau
Logistics Specialist



Jasmine Nahorniak
Assistant Datapresence Systems Engineer



Kris Saathoff
Buyer



James Caison
Design Specialist



Tristan King
Data Systems Specialist



- [Webcam 01](#)
- [Webcam 02](#)
- [Webcam 03](#)
- [Webcam 04](#)
- [Webcam 06](#)
- [Webcam 08](#)

RCRV Update

Regional Class Research Vessel Program- Oregon State University

October 24, 2024