



ECWP

East Coast Winch Pool Update
RVTEC 2024

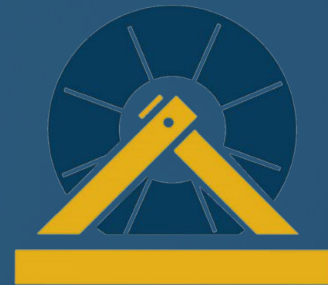


WOODS HOLE
OCEANOGRAPHIC
INSTITUTION

WOODS HOLE OCEANOGRAPHIC INSTITUTION



1930



ECWP

East Coast Winch Pool Update
RVTEC 2024



WOODS HOLE
OCEANOGRAPHIC
INSTITUTION



ECWP

Workshop Pool Update
RVTEC 2024



WOODS HOLE
OCEANOGRAPHIC
INSTITUTION





ECWP

Pool Update
RVTEC 2024



WOODS HOLE
OCEANOGRAPHIC
INSTITUTION





ECWP

East Coast Winch Pool Update
RVTEC 2024



WOODS HOLE
OCEANOGRAPHIC
INSTITUTION





Winch Pool Purpose

Why is Josh talking again?

| Purpose

What Do We Do For You

Winch Rental

- Hertz Rental of Winches
- From Super Cars to Daily Drivers

What Do We Do For You

Push the
Advancement
of OHS
Components

- Push Manufacturers to Make Better Equipment

Winch Rental

- Hertz Rental of Winches
- From Super Cars to Daily Drivers

What Do We Do For You

Joint OHS
Expertise

- Answer all Winch Questions
- Provide Purchase Assistance
- Provide Design Assistance

Push the
Advancement
of OHS
Components

- Push Manufacturers to Make Better Equipment

Winch Rental

- Hertz Rental of Winches
- From Super Cars to Daily Drivers



2

Personnel

The people behind the magic

East Coast Winch Pool Personnel

Joshua Eaton

Brainy



System Maintenance

Jamie Haley

Wrenchy



Brian Guest Bookie



Brian Guest

Retiring





3

Assets

What we've got

| Winches

Winches



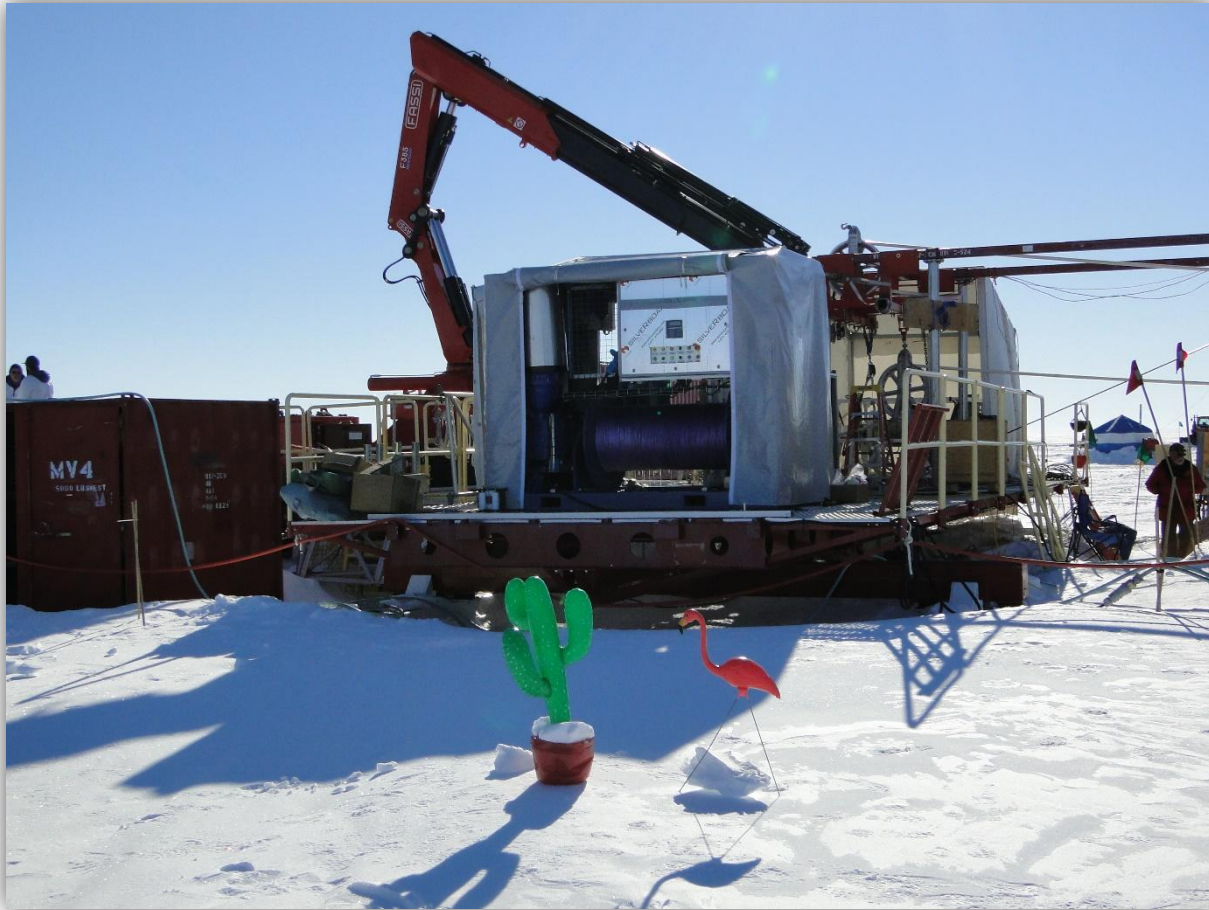
Moe
MASH2K-1

Winches



Larry
MASH2K-2

Winches



Curly
MASH4K-1

Winches



Shemp MASH4K-2

Winches



Gloria
SPRE-2530 S

Winches



Godzilla SPRE-3464

| Winches



Monk
Dynacon 1007

Winches



Donnie
Dynacon 10030

Winches



Marie
Dynacon 10030

Winches



Joe
SPRE- 2648

Winches



Cletus & Cooter

SD-70

| Winches



Jay Jay

IOS TM

Sheaves

½" Harken
Block

0.322 Harken
Block

0.322 Trace
Metal Block

36" 0.681 Block

Wide Groove
Metering Block

¼ " Trace Metal
Block





Other Assets

2 MRUs

Electrical
Sliprings

Fiber Optic
Rotary Joints

Load Cells

220 to 480
Transformer

Winch Turn
Tables

Tensioners

Pine Hill



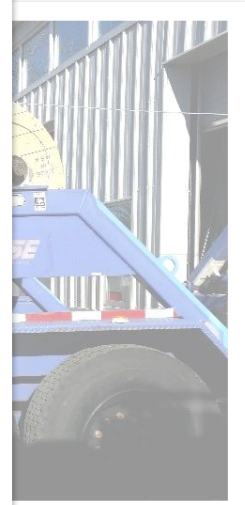
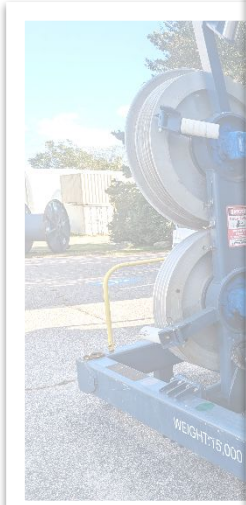
Tensioners

Barney



Tensioners

Leitheiser







4

Usage

Our stuff: Is it being used?

Fulfilled Winch Requests

3 winches have not left the shop this year: Gloria, Donnie, & Marie

This year has had longer deployments. The shop was empty all summer.





5

Issues and Repairs

What broke this time?

Problems encountered this year

1

Load Pin Failure

Gloria's load pin sent out for repair.

2

Pine Hill

Various sensors failed, as well as remote control potentiometer.

Electrical enclosure replaced.

3

Encoder Wobble

Jay Jay's encoder shaft was bent previously, Even with the repaired shaft the wobble was present. Encoder Wobble Caused speed fluctuations



6

Improvements

We can build it better

ECWP Remote

User Interface

Connection Process

Splash Screen

Long Extensions



ECWP Data Collection Program



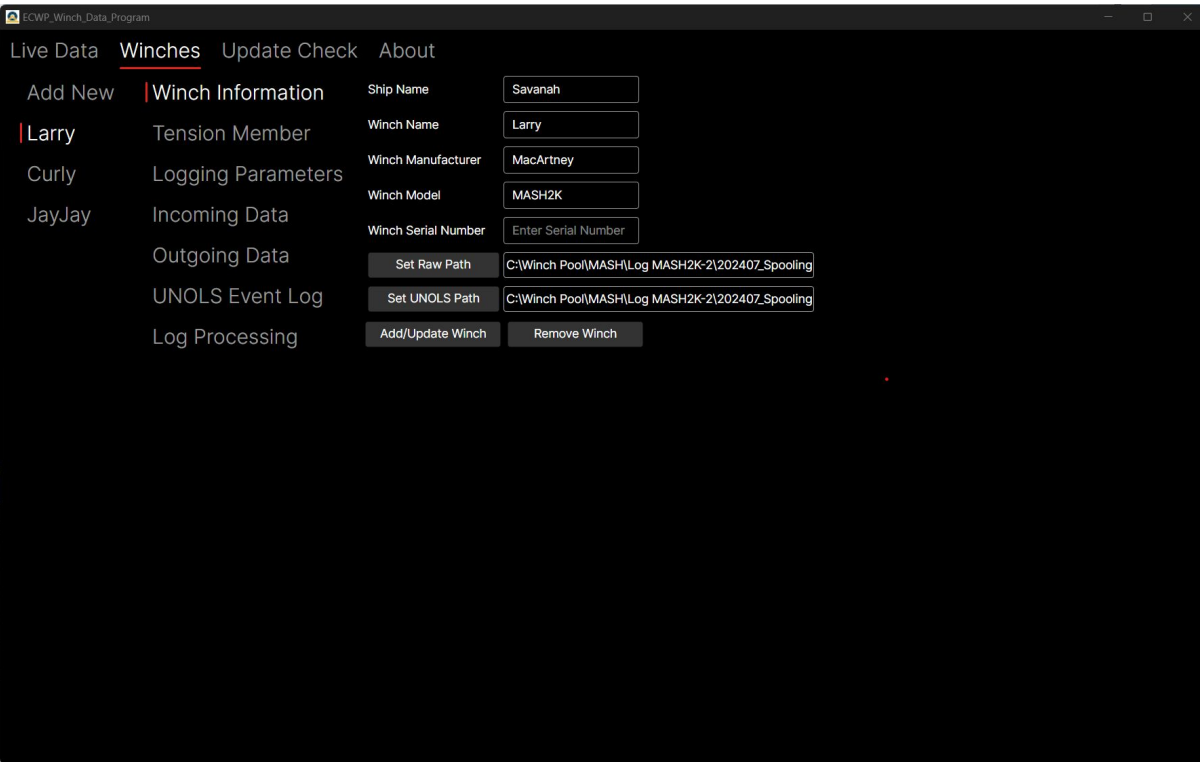
Supports
Additional
Winches

Multi-Winch
Plotting

Cross Platform

Appendix A Visual
Warnings and
Alarms

UNOLS Wire Pool
Compliant Log



ECWP Data Collection Program

Add additional devices

Additional processing options

Allow the user to define input string

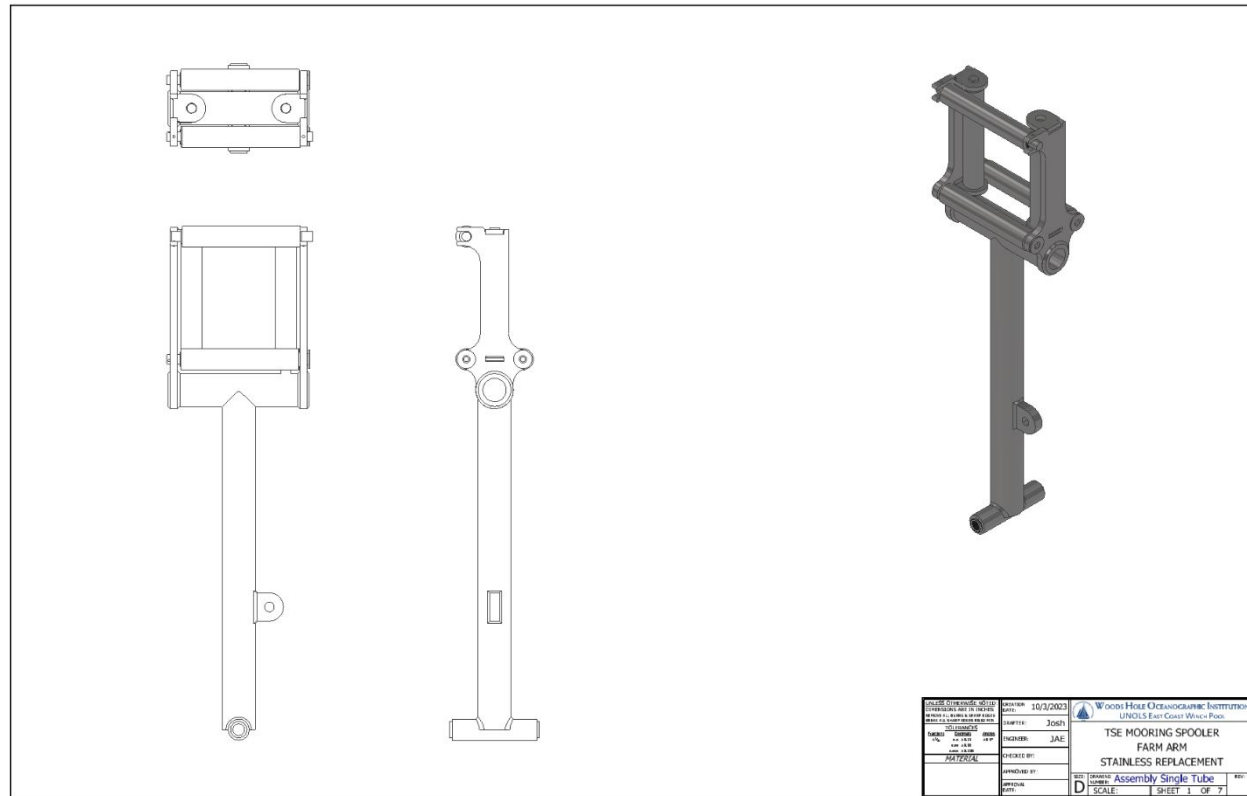
Create sheave path diagrams

Cletus & Cooter

Stainless Steel Rollers (Both)

Stainless Steel Farm Arm (Cletus)

New Arm Has Proved Robust





Jay Jay

Operator
Platform

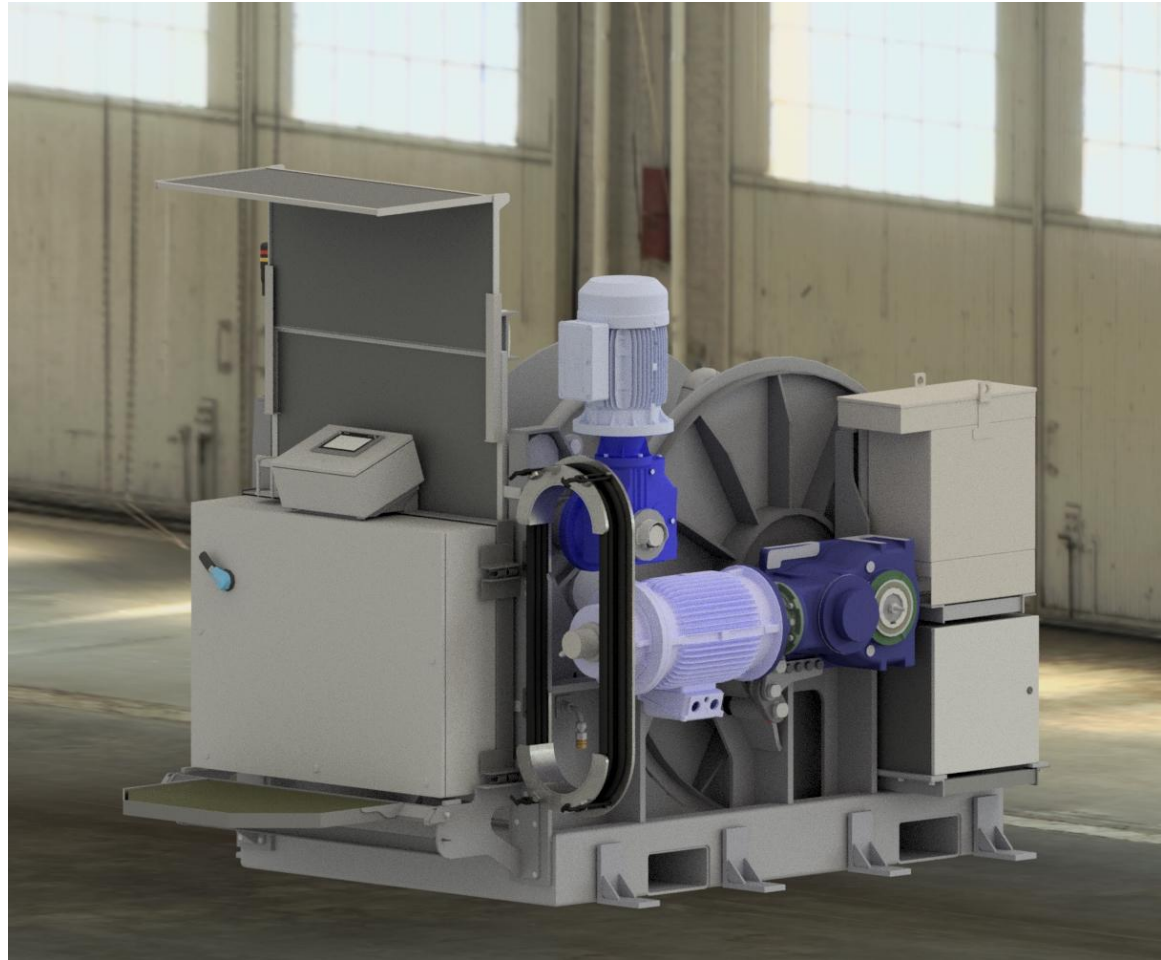
Improved
Metering

Removed
Encoder
Wobble

Godzilla

New Spare
Parts
Enclosure

Power
Cord
Storage





7

Projects

Not just winches

USAP Winch Platform



Test Tower





8

Other Services

Help us help you

Services

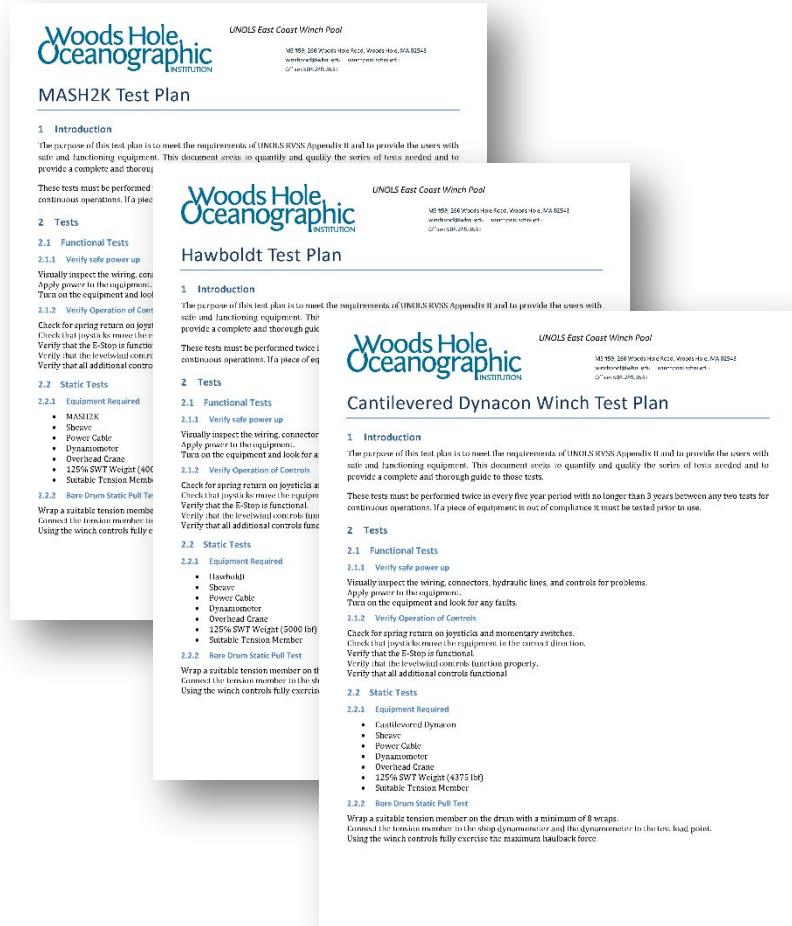
Acquisition Assistance

Testing Plans

Training

LCI-90i & RPC-90x Oversight

Technical Assistance



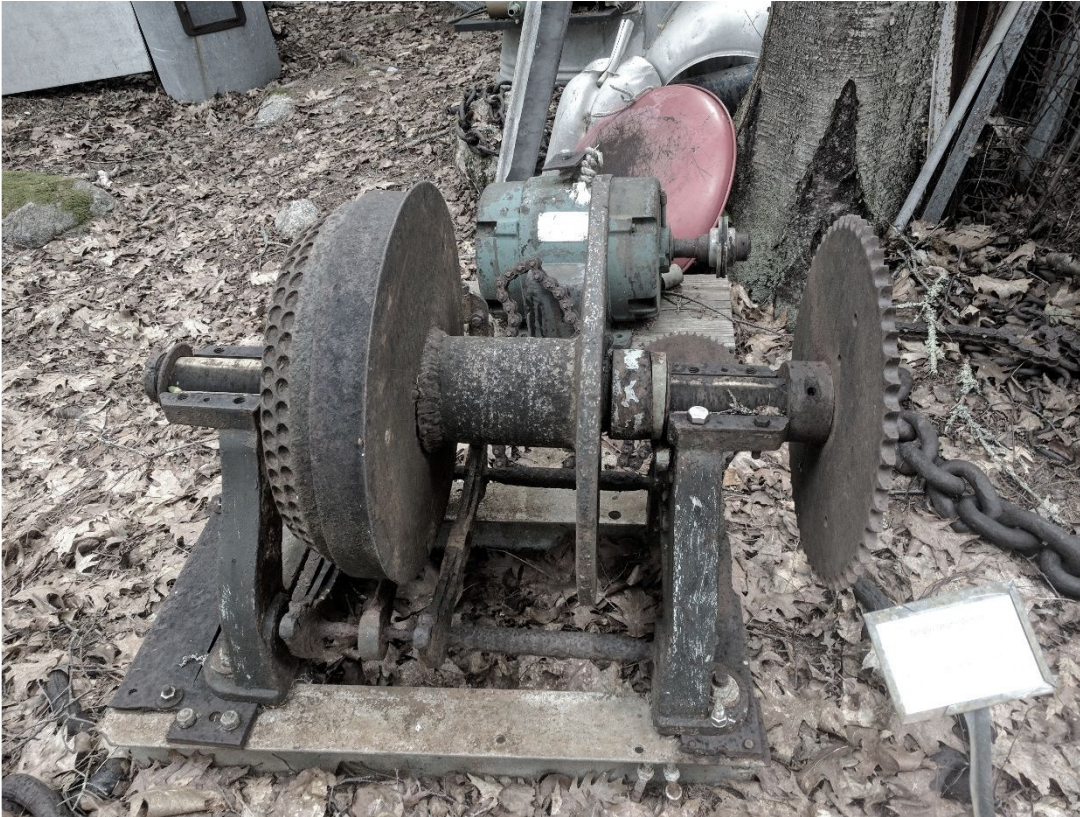


9

Future

A look into the crystal ball

Upcoming



Additional
Tracemetal
Winch

Replacement
for Jed

Test Tower
Completion

Questions?