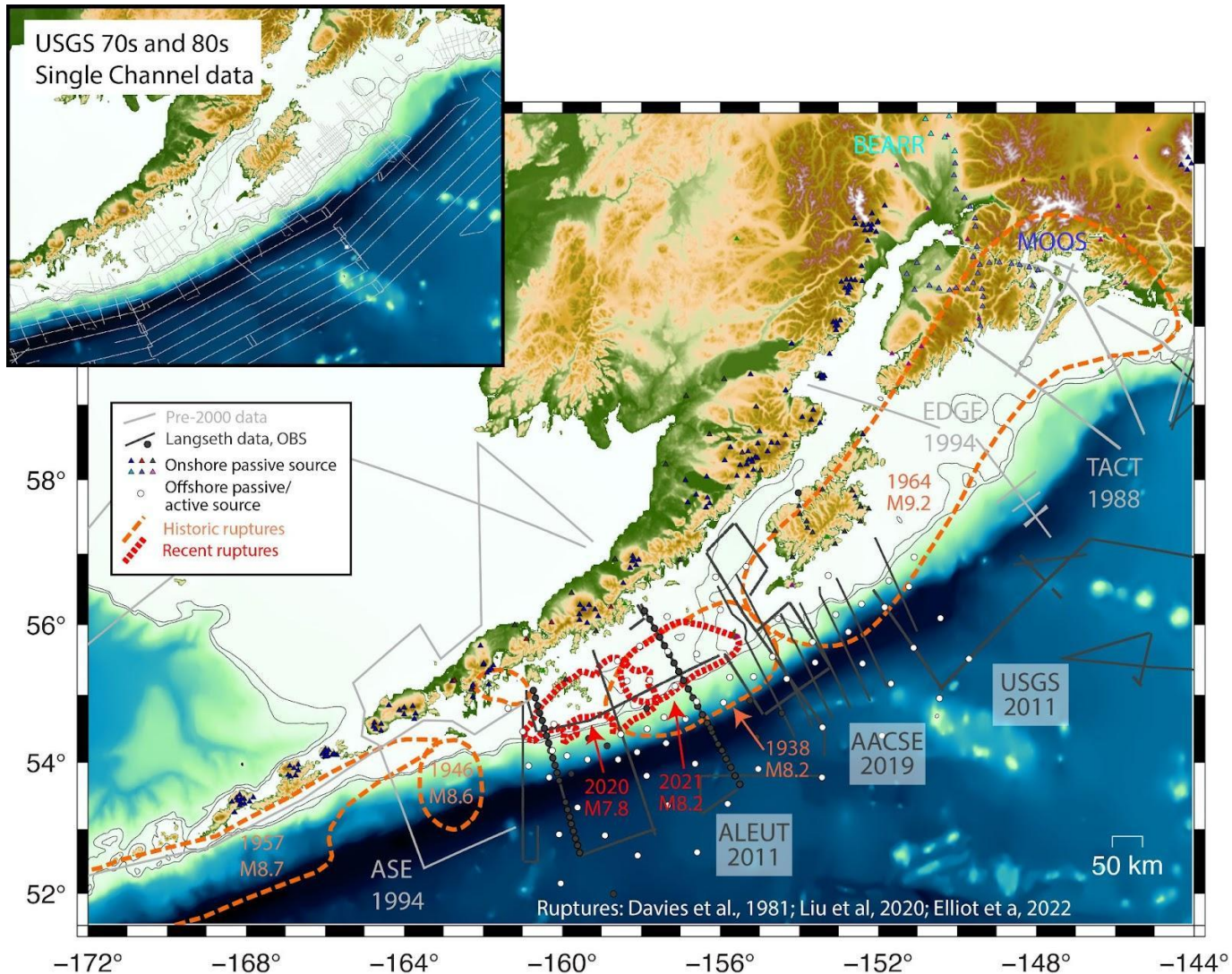


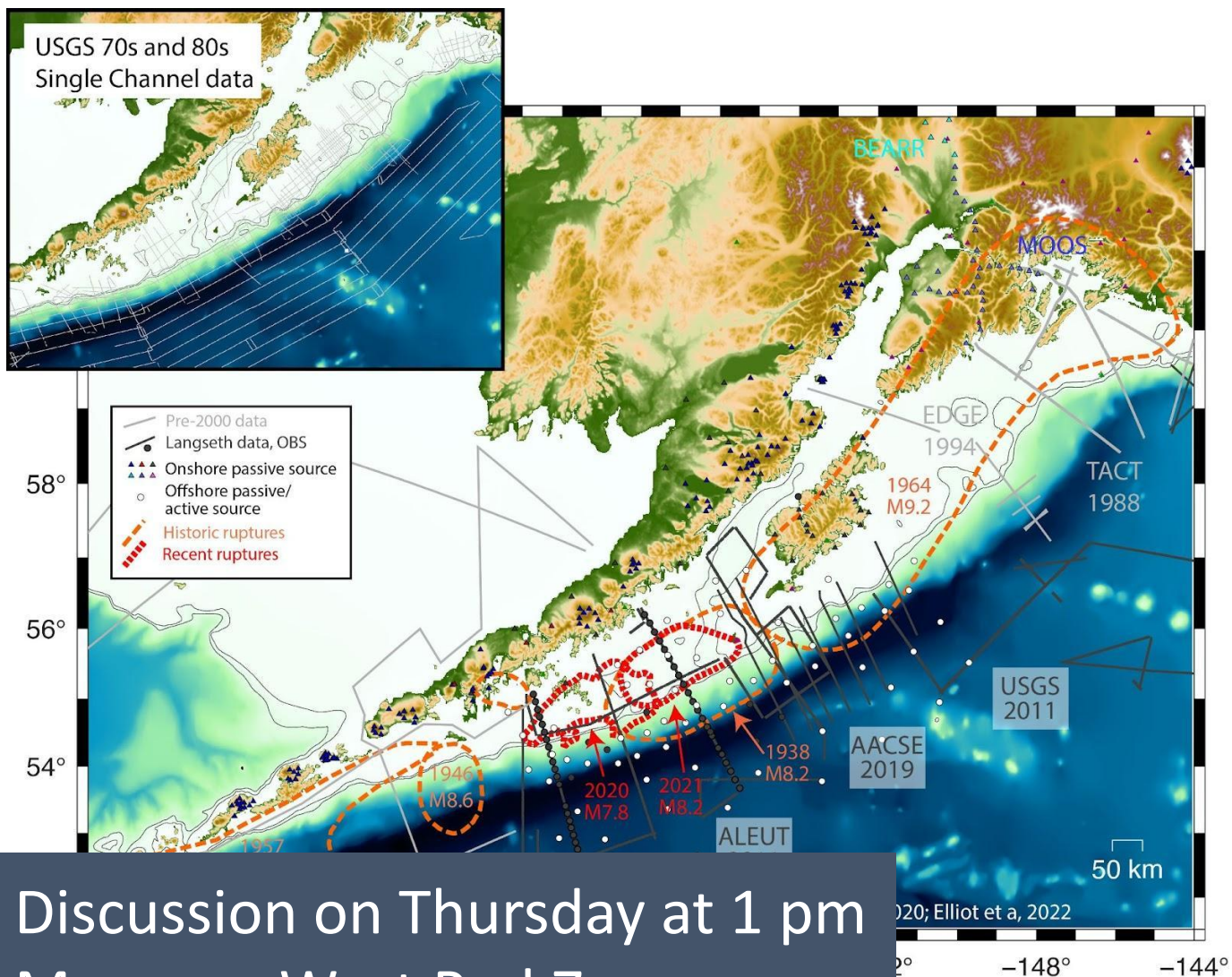
The BIG One: Community experiment to acquire margin-wide 2D seismic imaging along the Alaska subduction zone



Lindsay Worthington, Donna Shillington, Anne Bécél, Nathan Miller, Peter Haeussler, Emily Roland, Demian Saffer, Carl Tape, Harold Tobin and others!

- A community seismic experiment to acquire deep-penetration/high-res MCS + wide-angle OBS data with R/V *Langseth* to achieve a consistent level of 2D seismic imaging along the Alaska subduction zone between $\sim 167^{\circ}\text{W}$ and 145°W
- Focus on 1964 and 1946 rupture zones and infill off Alaska Peninsula
- Activities to maximize utility of data to broad scientific community

The BIG One: Community experiment to acquire margin-wide 2D seismic imaging along the Alaska subduction zone



Lindsay Worthington, Donna Shillington, Anne Bécél, Nathan Miller, Peter Haeussler, Emily Roland, Demian Saffer, Carl Tape, Harold Tobin and others!

- A community seismic experiment to acquire deep-penetration/high-res MCS + wide-angle OBS data with R/V *Langseth* to achieve a consistent level of 2D seismic imaging along the Alaska subduction zone between $\sim 167^{\circ}\text{W}$ and 145°W
- Focus on 1964 and 1946 ruptures zones and infill off Alaska Peninsula
- Activities to maximize utility of data to broad scientific community

Discussion on Thursday at 1 pm
Moscone West Pod 7