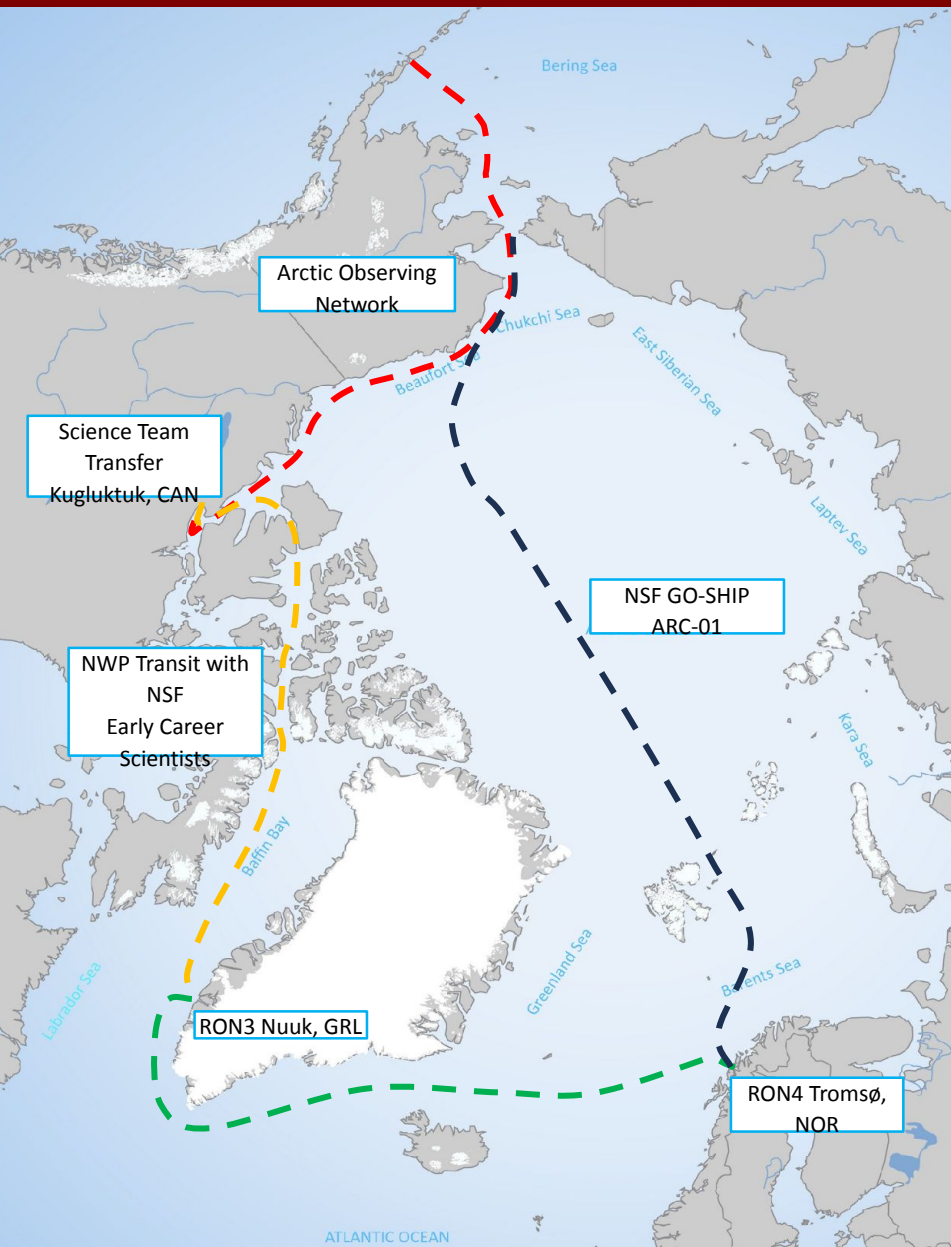


CGC HEALY (WAGB 20)

Arctic Summer 2024

v1.1



Chukchi/Beaufort Sea Transit

- Supports National Science Foundation and Woods Hole Oceanographic Institute in longstanding Arctic Observing Network.
- Investigates Alaska Coastal Current and introduction of warm, nutrient-rich waters to the coastal regions of Beaufort and Chukchi Seas.
- Planned research/transit cleared through Alaska Eskimo Whaling Commission.

NWP Transit

- Early season NWP transit maximizes time *Healy* spends in the Arctic by avoiding Panama Canal transit.
- NSF-funded *Early Career Scientist Cruise* develops future Healy lead scientists and is flexible to accommodate variable ice conditions and community engagement.
- Rendezvous and SMEE with Canadian Coast Guard in Canadian Arctic.
- Support for OP NANOOK in Baffin Bay
- Conduct Science Roundtable and/or COMREL in Nuuk, GRL

Atlantic Transit

- Exercise JACO/USCG Letter of Intent
- Rendezvous with Icelandic CG vessel and Norwegian CG vessel

Transpolar Transit

- Port visit in Tromsø, NOR
 - Onload final GO-SHIP equipment.
 - First ship visit since opening of DoS Presence Post in Tromsø.
- Conduct GO-SHIP scientific operations aligned with sea-ice minimum.
 - First ever, single-season, single-ship transpolar science observations. Will serve as a baseline measurement for detecting future changes in the Arctic.
- Port visit Juneau, AK prior to mooring Seattle, WA.