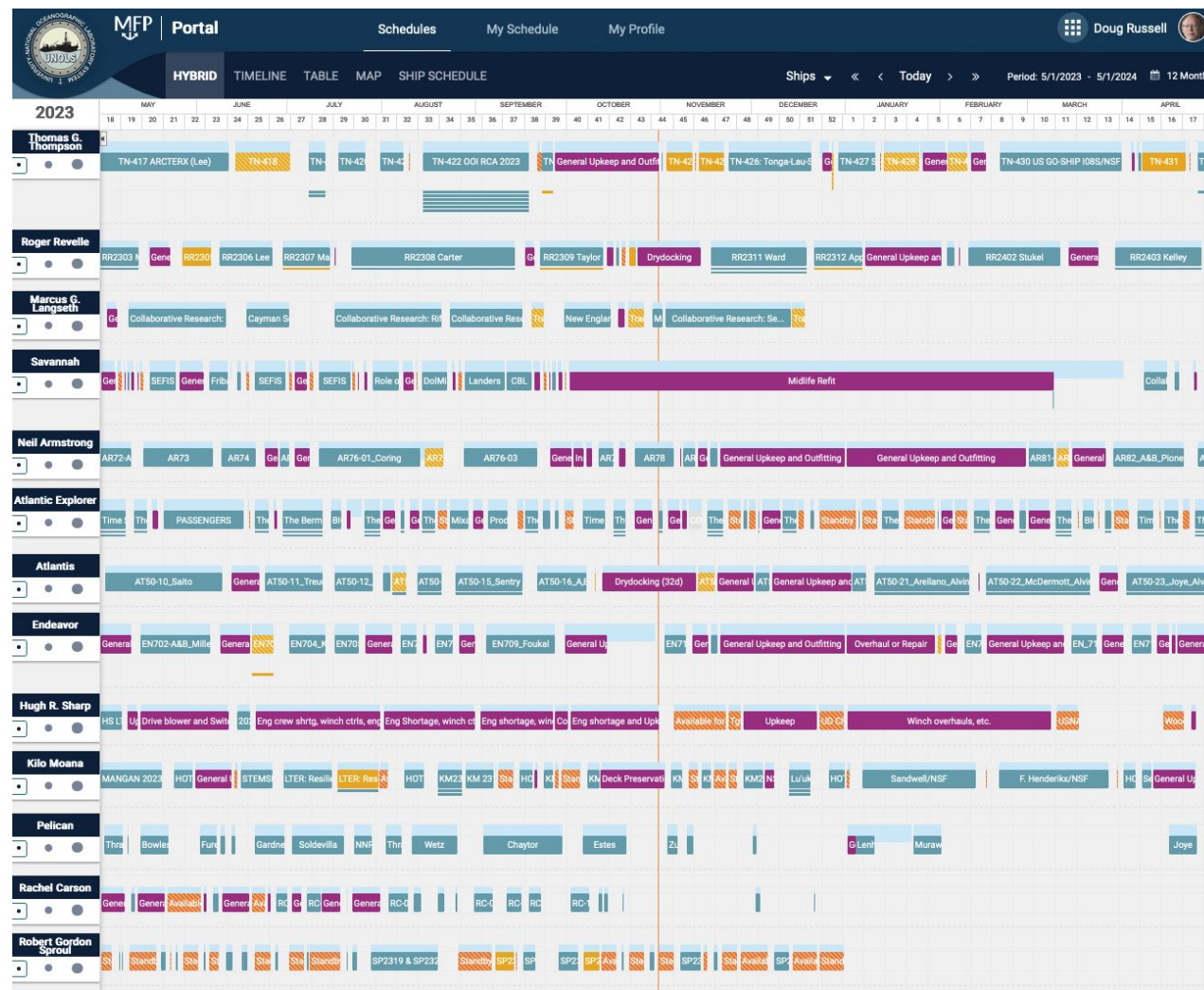


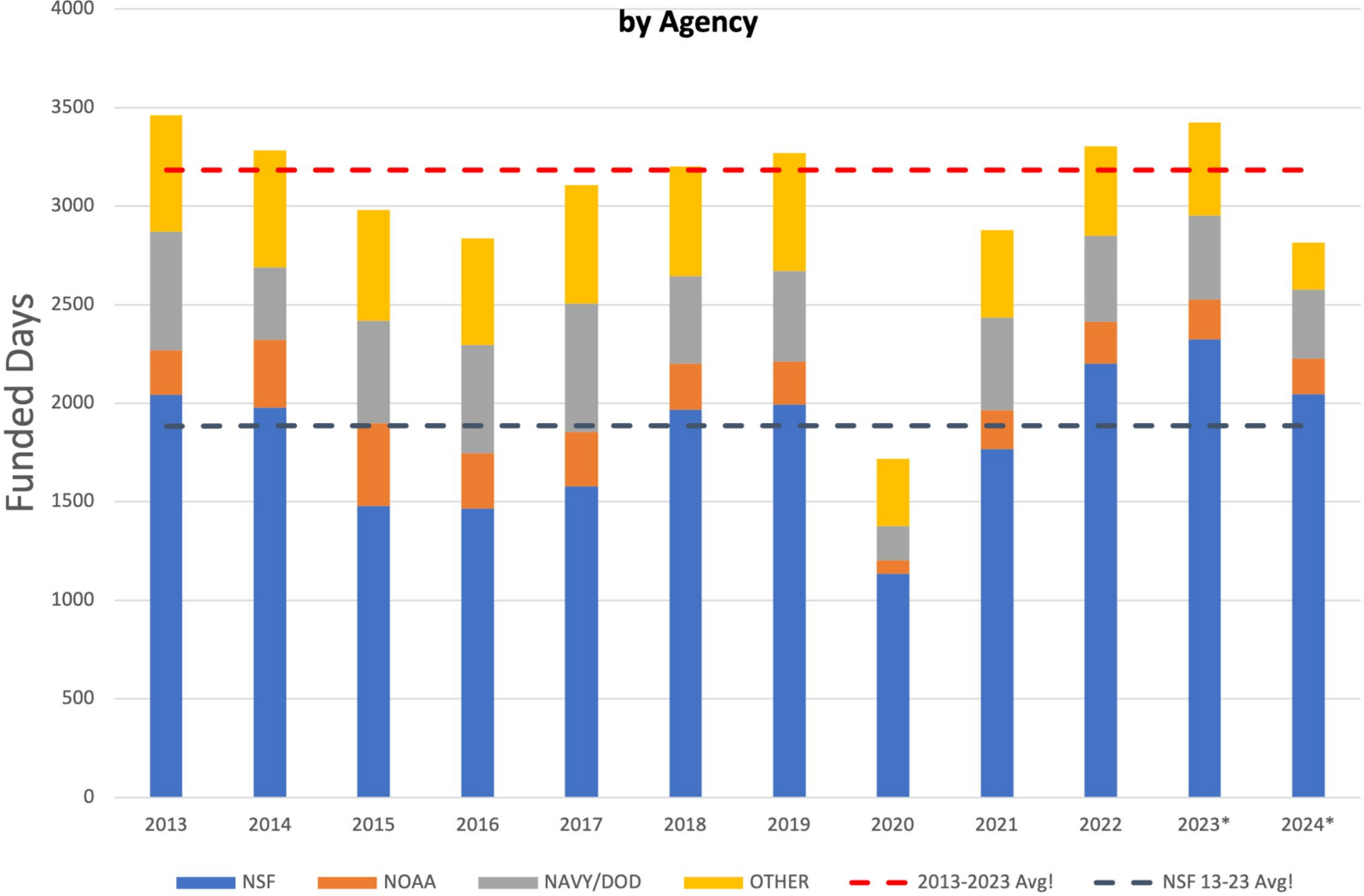


2023 Operations & 2024 Fleet Scheduling Projection

Doug Russell/UNOLS Office

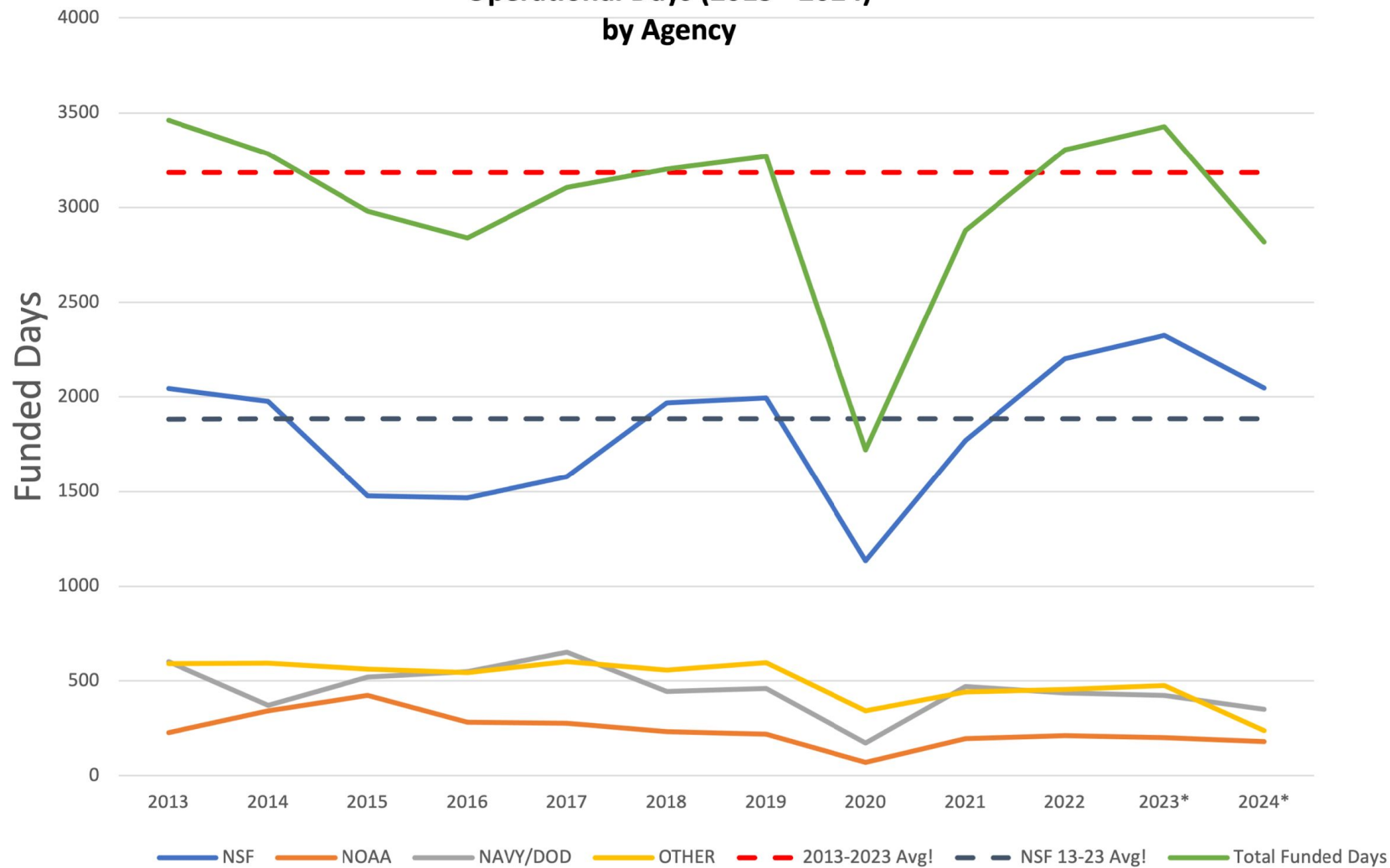


US Academic Research Fleet Operational Days (2013 - 2024) by Agency



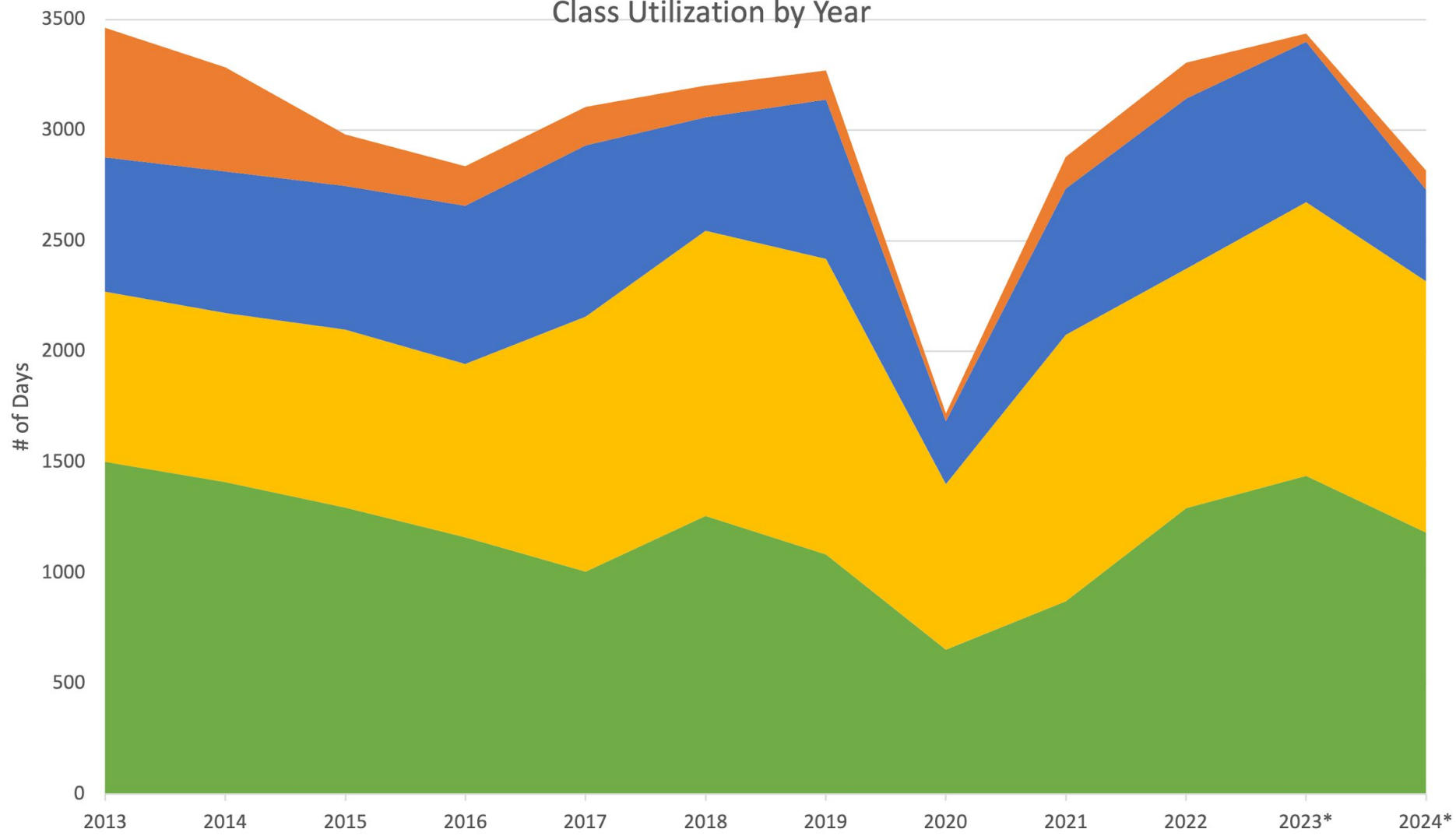
*Provisional
 ^Projected - Funded + 30% Pending
 ! 10yr Avgs do not include 2020 (COVID-19)

US Academic Research Fleet Operational Days (2013 - 2024) by Agency



*Provisional
 ^Projected - Funded + 30% Pending
 ! Uses Draft Schedules

US Academic Research Fleet Class Utilization by Year



*Provisional Schedules

■ Global ■ Ocean/Intermediate ■ Coastal/Local ■ Regional