

# STATUS UPDATE

## Regional Class Research Vessels



Presented by Demian Bailey 05/17/2023

## 3 Vessel Build under NSF MREFC Funding



*R/V Taani*



*R/V Narragansett Dawn*



*R/V Gilbert R Mason*



# RCRV PARTICULARS

- Length overall .....199 ft
- Beam ..... 41 ft
- Draft @ amidships .....12.5 ft
- Regulatory Tonnage ...1549 GT
- Cruise speed .....11 kt
- Max speed .....13 kt
- Range .....5400 nm @ 12 kt
- Endurance .....21 days min.
- Dynamic Positioning.....ABS DP-1
- Science/Tech Berths .....16
- Crew Berths .....13
- Retractable Centerboard (drop keel)
- A-frame dimensions ....25'H x 20'W
- Multibeam SONAR....EM304, 2040
- Number winches .....3
- Ice Class .....ABS C0

## What's changed in the last year?

- Hurricane Ida related issues resolved
- Lessons learned from V1 being applied to 2 and 3
- Vessel 3 construction begun in earnest
- Outfitting and Science Trials workshops complete
- V1 ready to launch tomorrow!
- V2 Stern Frame redesigned and rebuilt
- Contracts let for coring device, accommodation vans, CMMS,
- Nearly all outfitting items, sensors, cyber-infrastructure for all three vessels procured

Task Name	Duration	Start Date	End Date
These are not contract dates. These are likely dates based on known risks	①		
RCRV Transition to Operations	576d	11/20/23	02/02/26
- <b>R/V Taani</b>	<b>402d</b>	<b>11/20/23</b>	<b>06/03/25</b>
Start of Transition to Operations	0	11/20/23	11/20/23
+ Pre-Delivery Support	140d	11/20/23	05/31/24
<b>Delivery</b>	<b>0</b>	<b>06/03/24</b>	<b>06/03/24</b>
+ Outfitting, Operator and Science Trials	262d	06/03/24	06/03/25
Start of Operations	0	06/03/25	06/03/25
- <b>R/V Narragansett Dawn</b>	<b>401d</b>	<b>03/19/24</b>	<b>09/30/25</b>
+ Pre-Delivery Support	140d	03/19/24	09/30/24
<b>Delivery</b>	<b>0</b>	<b>10/01/24</b>	<b>10/01/24</b>
+ Outfitting, Operator and Science Trials	261d	10/01/24	09/30/25
Start of Operations	0	09/30/25	09/30/25
- <b>R/V Gilbert R. Mason</b>	<b>401d</b>	<b>07/22/24</b>	<b>02/02/26</b>
+ Pre-Delivery Support	140d	07/22/24	01/31/25
<b>Delivery</b>	<b>0</b>	<b>02/03/25</b>	<b>02/03/25</b>
+ Outfitting, Operator and Science Trials	261d	02/03/25	02/02/26
Start of Operations	0	02/02/26	02/02/26





Orange lifting beams and yellow slings are used to secure the pipe.

TRIPLE  
N 21  
WLL JT 0.540M

LINDU  
219179 9

Worker in white hard hat and dark jacket standing near a white container with windows.









TAANI  
NEWPORT OR

JLG LIFT

SHAGG HALL



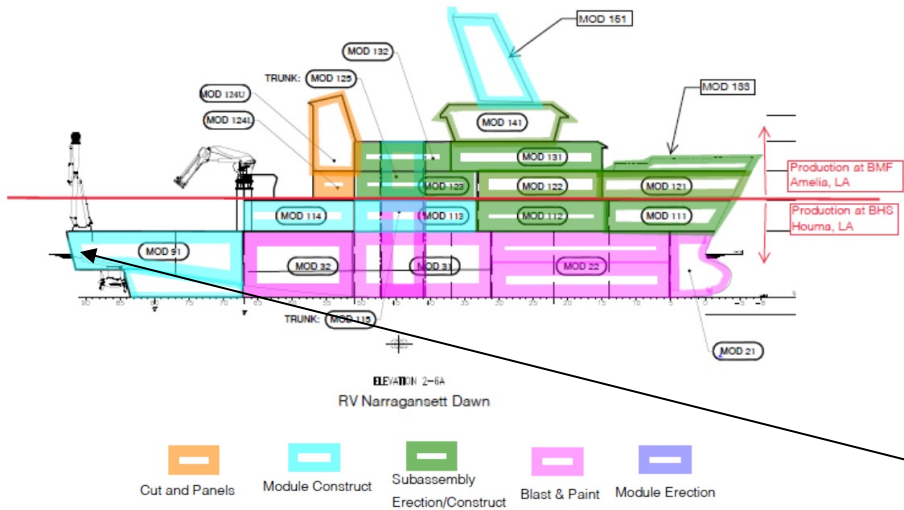


TAANI

HP925

DOOSAN

64784



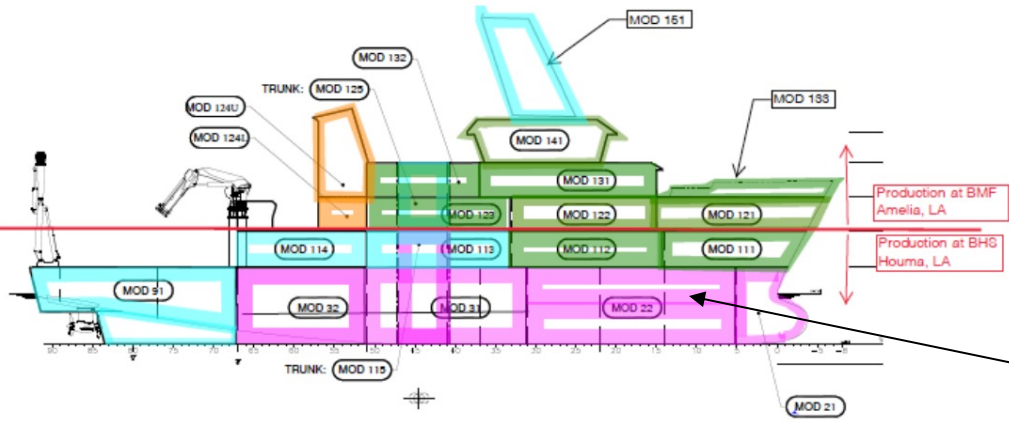
Mod 91



## *RV Narragansett Dawn*



# Supermod, Port Side



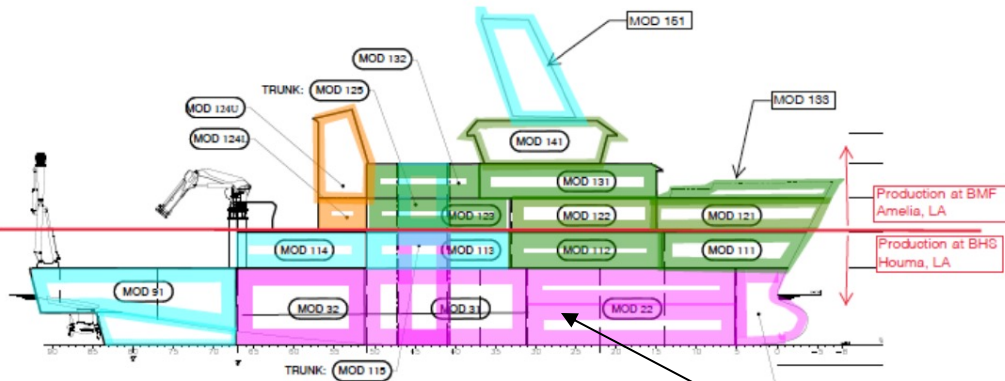
SECTION 2-8A  
RV Narragansett Dawn

-   
 Cut and Panels
-   
 Module Construct
-   
 Subassembly  
 Erection/Construct
-   
 Blast & Paint
-   
 Module Erection








# RV Narragansett Dawn





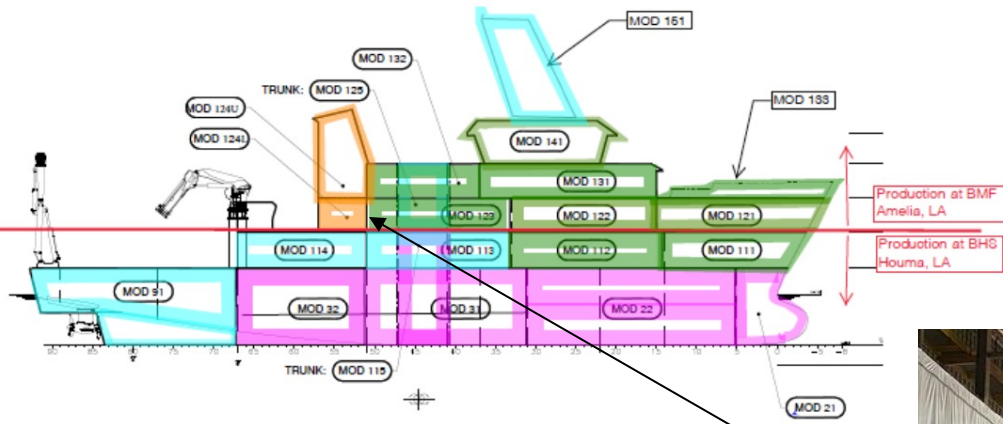
SECTION 2-8A  
RV Narragansett Dawn

-   
 Cut and Panels
-   
 Module Construct
-   
 Subassembly  
 Erection/Construct
-   
 Blast & Paint
-   
 Module Erection

Supermod, from aft

# RV Narragansett Dawn





- Cut and Panels
- Module Construct
- Subassembly Erection/Construct
- Blast & Paint
- Module Erection

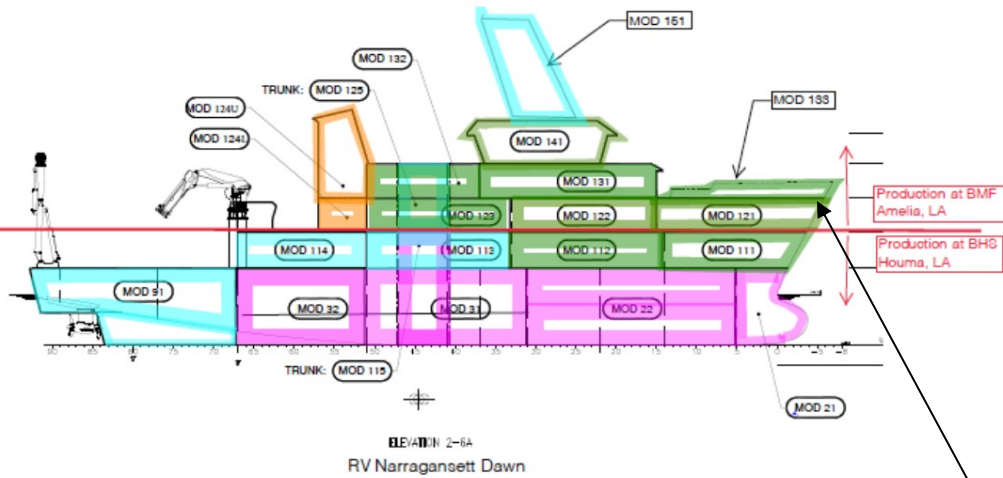
# RV Narragansett Dawn



Aluminum superstructure, looking forward



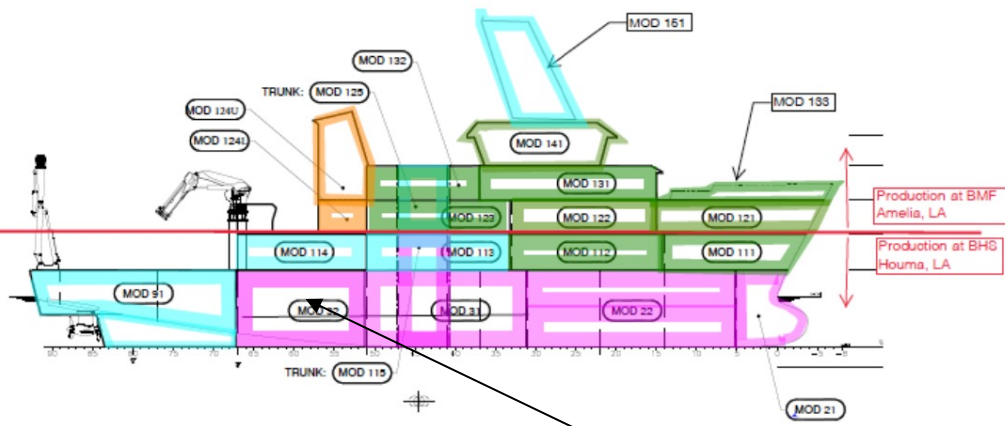








Aluminum Superstructure bow and mast, looking aft

## R/V Narragansett Dawn






SECTION 2-6A  
RV Narragansett Dawn

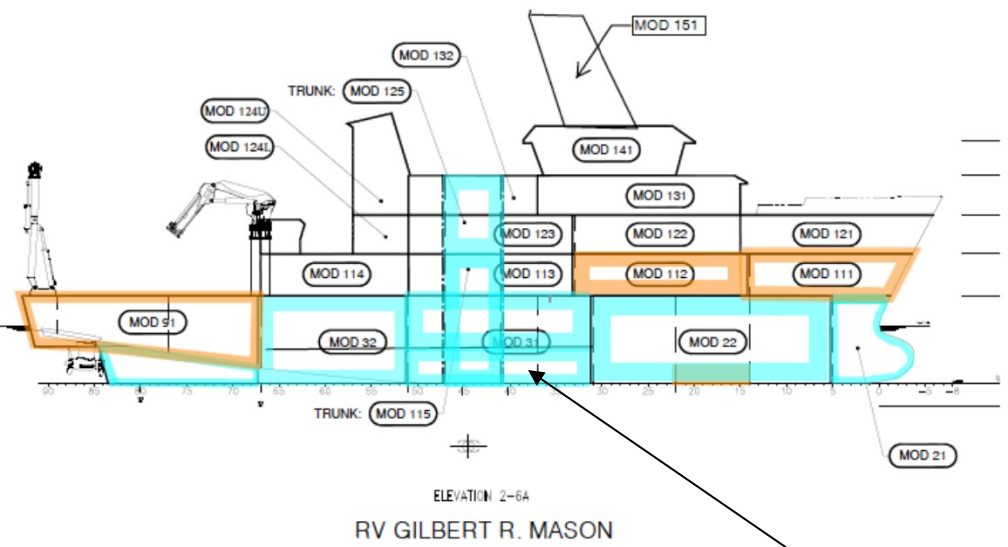
-   
Cut and Panels
-   
Module Construct
-   
Subassembly  
Erection/Construct
-   
Blast & Paint
-   
Module Erection

Mod 32

# R/V Narragansett Dawn








-   
 Cut and Panels
-   
 Module Construct
-   
 Subassembly  
 Erection/Construct
-   
 Blast & Paint
-   
 Module Erection

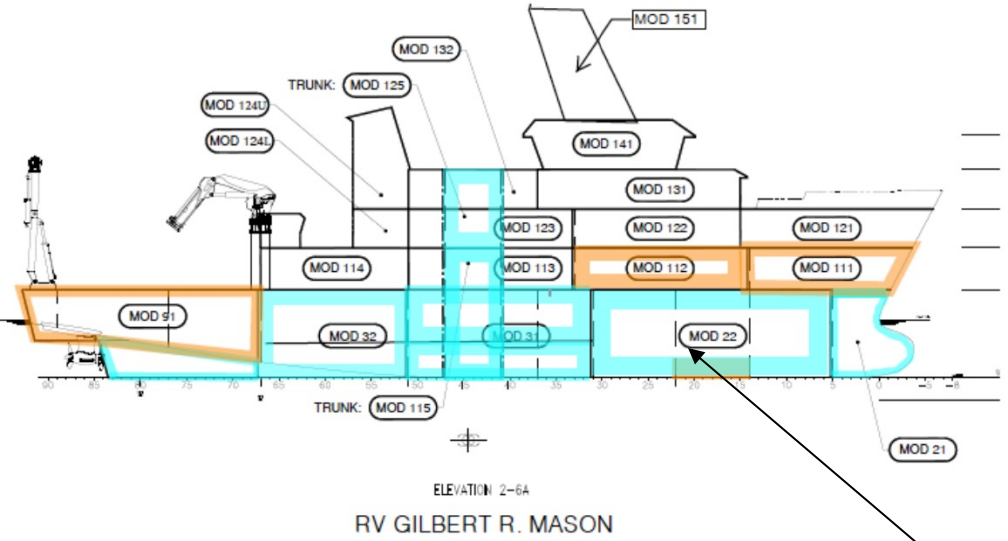


Mod 31, Inverted

RV Gilbert R Mason



-   
 Cut and Panels
-   
 Module Construct
-   
 Subassembly  
 Erection/Construct
-   
 Blast & Paint
-   
 Module Erection

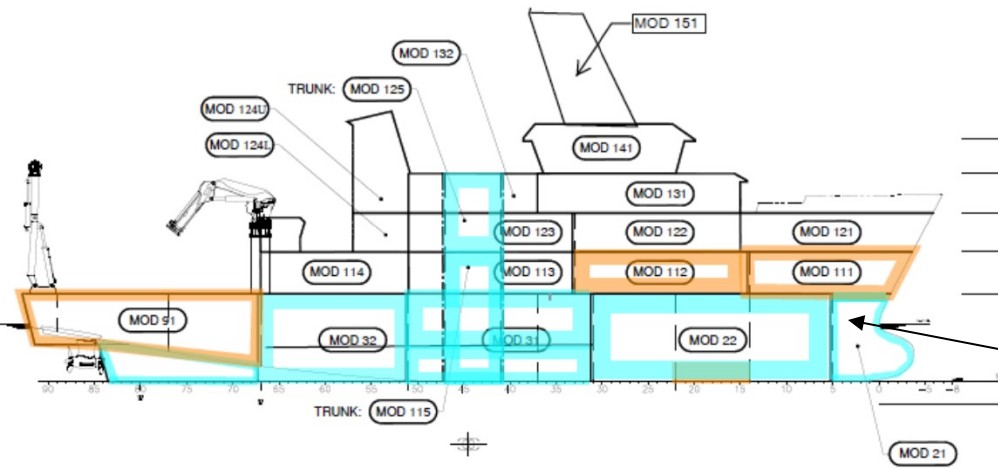


Mod 22, Inverted








*RV Gilbert R Mason*





ELEVATION 2-6A

RV GILBERT R. MASON

-   
 Cut and Panels
-   
 Module Construct
-   
 Subassembly  
 Erection/Construct
-   
 Blast & Paint
-   
 Module Erection

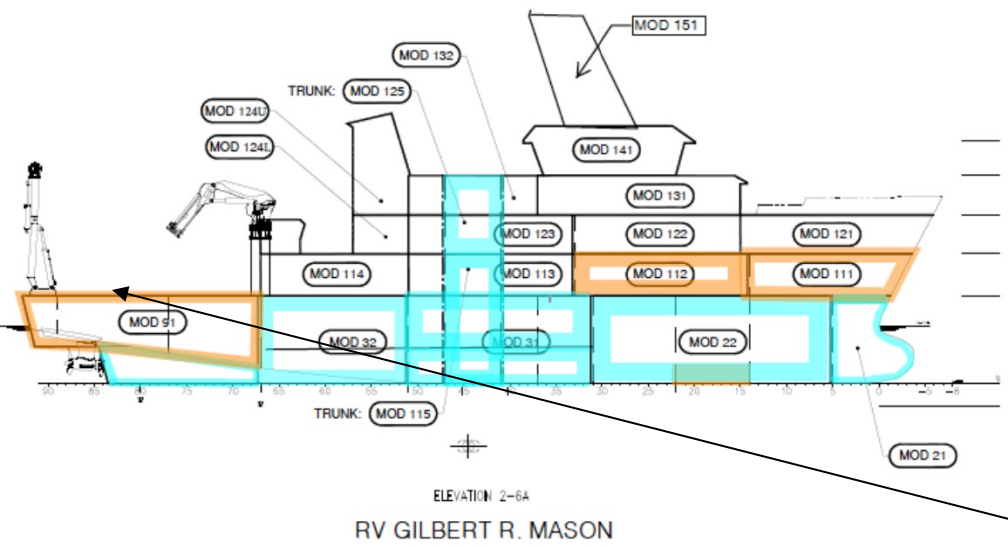


*RV Gilbert R Mason*



Mod 21, Inverted

-  Cut and Panels
-  Module Construct
-  Subassembly Erection/Construct
-  Blast & Paint
-  Module Erection



Mod 91, Inverted Deck



RV Gilbert R Mason



# R/V TAANI PROGRESS UPDATE

