

CHIEF SCIENTIST COURSE

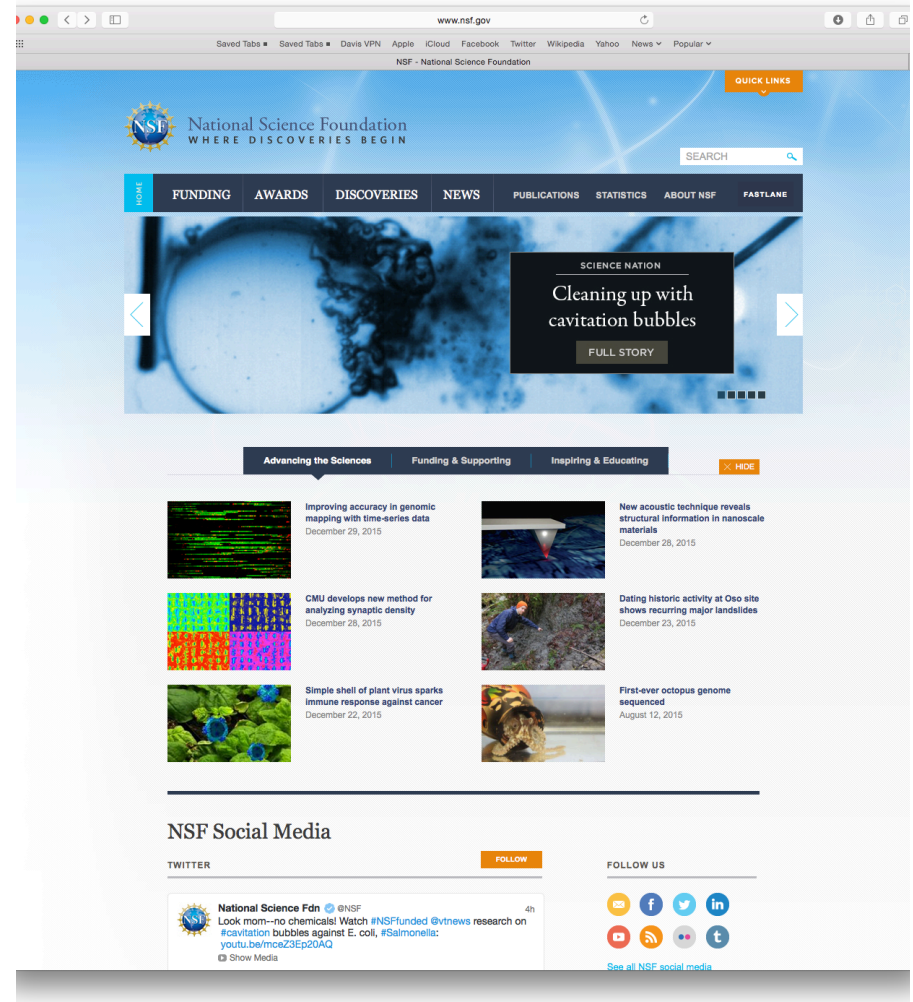
Hawaii

June 2019



Outline

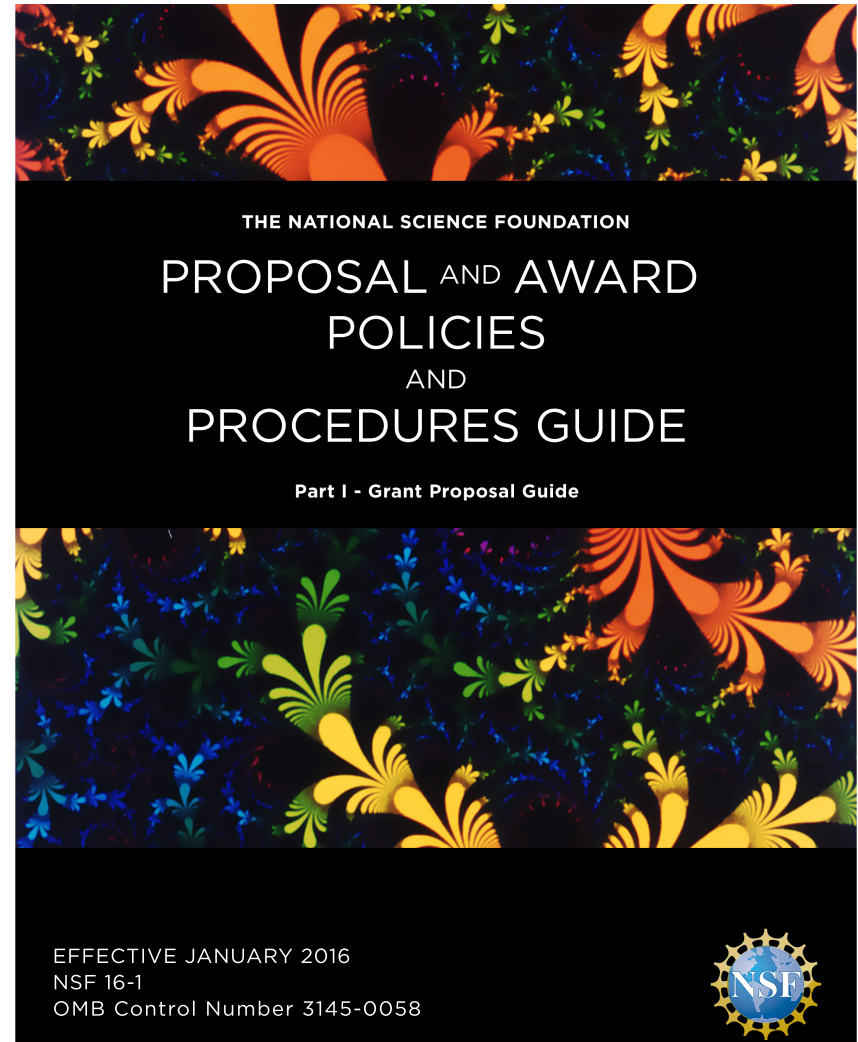
- Proposal submission:
where to start?
 - How to plan ship time
- Merit review
 - How is ship time reviewed?



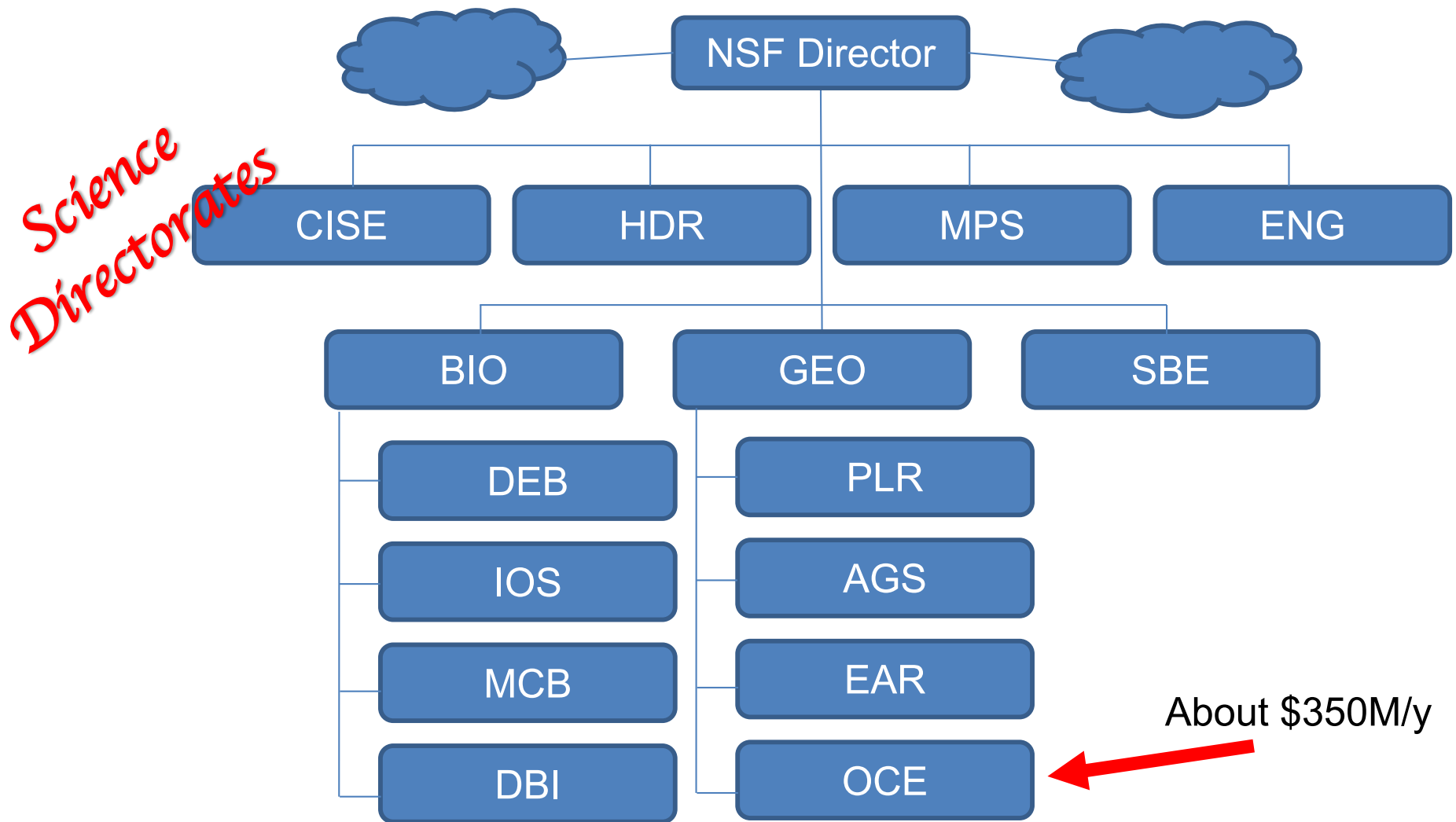
Proposal Submission Process

Gathering information

- Grant proposal guide (GPG)
- NSF program websites
- Special competitions
- Your colleagues, mentors, and Institution Office of Sponsored Research



NSF Organization (Abridged)



Research Scope

Directing proposals to the right NSF Program

Directorate for Geosciences

Directorate for Biological Sciences



Biological Oceanography (BO)
Physical Oceanography (PO)
Chemical Oceanography (CO)
Marine Geology & Geophysics (MGG)



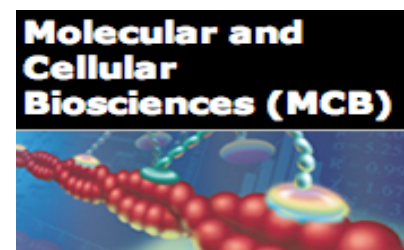
Ecology

Systematics
Evolution

Behavior
Development
Physiology

Molecular & Cellular Biol.
Genetic Mechanisms, etc.

Facilities,
Collections, etc.



NSF Award Search

Keyword, program, PI

The screenshot shows the NSF Award Search website. At the top, the URL is www.nsf.gov/awardsearch/. The NSF logo is on the left, and the text "National Science Foundation WHERE DISCOVERIES BEGIN" is next to it. A "QUICK LINKS" button is on the right. Below the logo, there is a search bar with the text "SEARCH" and a magnifying glass icon. A navigation bar contains links: HOME, FUNDING, AWARDS, DISCOVERIES, NEWS, PUBLICATIONS, STATISTICS, ABOUT NSF, and FASTLANE. Below this, there is a row of buttons: Simple Search, Advanced Search, Popular Searches, Download Awards, Send Comments, and Award Search Help. The main section is titled "Awards Simple Search". Below this, there is a link to "Overview of Award Search Features". A search form is present with the text "Search award for:" followed by a text input field. To the right of the input field is a "Search" button with a green arrow. Below the input field, there is a note: "Use double quotes for exact search. For example 'water vapor'." Below this note, there are two checkboxes: "Active Awards" (checked) and "Expired Awards" (unchecked). At the bottom of the search form, there is a "Feedback" button with the NSF logo. To the right of the feedback button, there is a "FOLLOW US" section with icons for Facebook, Twitter, LinkedIn, and YouTube, followed by a link to "See all NSF social media". Below the search form, there is a navigation bar with links: FUNDING, AWARDS, DISCOVERIES, NEWS, PUBLICATIONS, and STATISTICS. At the bottom of the page, there is a footer with links: Research.gov, USA.gov, BusinessUSA, Recovery Act, Budget and Performance, Annual Financial Report, Web Policies and Important Links, Privacy, FOIA, Plain Language, NO FEAR Act, Inspector General, Webmaster Contact, and Site Map. The NSF logo is centered at the bottom, followed by the text: "The National Science Foundation, 4201 Wilson Boulevard, Arlington, Virginia 22230, USA" and "Tel: (703) 292-5111, FIRS: (800) 877-8339 | TDD: (800) 281-8749". At the very bottom, there are links for "Text Only Version" and "View Mobile Site".

www.nsf.gov/awardsearch/

NSF National Science Foundation
WHERE DISCOVERIES BEGIN

QUICK LINKS

SEARCH

HOME FUNDING AWARDS DISCOVERIES NEWS PUBLICATIONS STATISTICS ABOUT NSF FASTLANE

Simple Search Advanced Search Popular Searches Download Awards Send Comments Award Search Help

Awards Simple Search

[Overview of Award Search Features](#)

Search award for:

Search

Use double quotes for exact search. For example "water vapor".

☒ Active Awards ☐ Expired Awards

NSF Feedback

FOLLOW US [f](#) [t](#) [in](#) [v](#) [See all NSF social media](#)

FUNDING AWARDS DISCOVERIES NEWS PUBLICATIONS STATISTICS

[Research.gov](#) | [USA.gov](#) | [BusinessUSA](#) | [Recovery Act](#) | [Budget and Performance](#) | [Annual Financial Report](#) | [Web Policies and Important Links](#)
[Privacy](#) | [FOIA](#) | [Plain Language](#) | [NO FEAR Act](#) | [Inspector General](#) | [Webmaster Contact](#) | [Site Map](#)

NSF

The National Science Foundation, 4201 Wilson Boulevard, Arlington, Virginia 22230, USA
Tel: (703) 292-5111, FIRS: (800) 877-8339 | TDD: (800) 281-8749

[Text Only Version](#) | [View Mobile Site](#)

Biological Oceanography Program



Division of Ocean Sciences

BIOLOGICAL OCEANOGRAPHY

CONTACTS

Name	Email	Phone	Room
David L. Garrison	dgarriso@nsf.gov	(703) 292-8582	
Julie B. Kellner	jkellner@nsf.gov	(703) 292-2688	
Michael Sieracki	msierack@nsf.gov	(703) 292-7585	
Cynthia Suchman	csuchman@nsf.gov	(703) 292-2092	
Daniel Thornhill	dthornhi@nsf.gov	(703) 292-8143	
Gayle Pugh	gpugh@nsf.gov	(703) 292-7589	
Joann King	jking@nsf.gov	(703) 292-7596	

PROGRAM GUIDELINES

Apply to PD 98-1650 as follows:

For full proposals submitted via FastLane: standard **Grant Proposal Guide** proposal preparation guidelines apply.

For full proposals submitted via Grants.gov: the *NSF Grants.gov Application Guide; A Guide for the Preparation and Submission of NSF Applications via Grants.gov Guidelines* applies. (Note: The *NSF Grants.gov Application Guide* is available on the Grants.gov website and on the NSF website at: http://www.nsf.gov/publications/pub_summ.jsp?ods_key=grantsgovguide)

Important Information for Proposers

A revised version of the *NSF Proposal & Award Policies & Procedures Guide* (PAPPG) (NSF 16-1), is effective for proposals submitted, or due, on or after January 25, 2016. Please be advised that, depending on the specified due date, the guidelines contained in NSF 16-1 may apply to proposals submitted in response to this funding opportunity.

DUE DATES

Full Proposal Target Date: February 16, 2016

February 15, Annually Thereafter

Full Proposal Target Date: August 15, 2016

August 15, Annually Thereafter

SYNOPSIS

The Biological Oceanography Program supports research in marine ecology broadly defined: relationships among aquatic organisms and their interactions with the environments of the oceans or Great Lakes. Projects submitted to the program for consideration are often interdisciplinary efforts that may include participation by other OCE Programs. (See information provided under Related URLs below).

RELATED URLS

Program Officer for Biological Oceanography

Additional Program Information (Research Interests, Multi-disciplinary Programs, Community Planning, Supplements, Submission Tips)

THIS PROGRAM IS PART OF

What Has Been Funded (Recent Awards Made Through This Program, with Abstracts)

Map of Recent Awards Made Through This Program

News

Discoveries

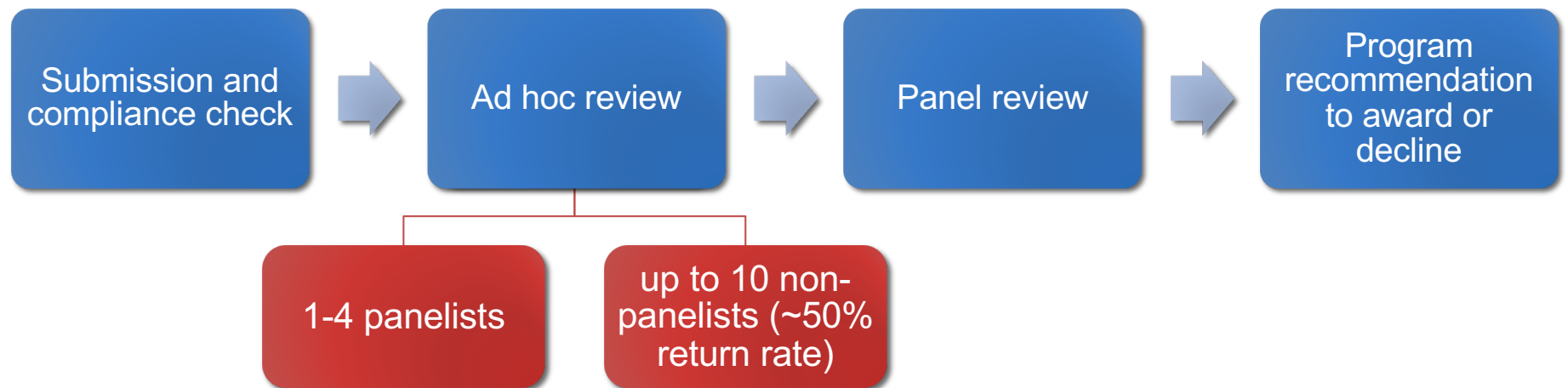


The National Science Foundation, 4201 Wilson Boulevard, Arlington, Virginia 22230, USA Tel: (703) 292-5111, FIRS: (800) 877-8339 | TDD: (800) 281-8749

How to plan a project with ship time

- Match plan to science question.
- Plan location, cruise track, station time to estimate duration, transit days and science days.
- Consider adding weather contingency.
- Marine tech time, science party, berths to estimate size of ship needed
- Are foreign clearances needed?
- Equipment needed, anything specialized? – talk to ship operator.
- Complete Ship Time Request (STR) form.

Proposal Merit Review Process



Merit Review Criteria

1. Intellectual Merit:

- High quality research with potential to advance, if not transform, the frontiers of knowledge

2. Broader Impacts:

- Contribute more broadly to achieving societal goals
- May be accomplished through the research itself
- May be based on previously established and/or innovative methods and approaches

3. Any Solicitation Specific Criteria (consult the Program Solicitation)

How is ship time in a proposal evaluated?

1. Does the ship request match the science proposed?
2. Is the number of cruises and duration appropriate to the science?
3. Is the scale of the ship request (\$\$, # days) well matched to the science?

When things go sideways (or worse)

- Science at sea is risky
- Be prepared: set priorities, prepare plans B+C
- You must keep an open mind, be flexible to deal with the unknowns
- When a challenge or crisis presents itself, think about who do you need to communicate with?
 - Your science party
 - Ship captain and crew
 - Shore support? NSF?
- Make decisions, in consultation with Captain
- Document what is happening, make notes

Post Cruise Interactions with NSF

- Post Cruise Report is critical.
 - What worked, what didn't work.
 - This is read by ship operators, NSF
- If there was any special media coverage, or significant discovery associated with the cruise, contact your NSF Program Director.
- If there was a major, unexpected complication that causes your project workplan to change, contact your Program Director
 - NSF expects PIs to share the risk of science at sea
 - In rare cases a Budget Supplement to the award might be possible

Challenges, what would you do?

- Your cruise is scheduled to embark and essential equipment or supplies have not arrived.
- You or a co-PI is expecting a child in the middle of a project that includes field work.
- The captain has informed you that you cannot execute an essential part of the cruise due to weather.
- Your cruise is about to cross the equator and the crew is preparing for the rites of passage.
- Certain operations on the ship become difficult due to equipment problems and lack of communications with the crew or marine technicians.
- A crew member or scientist is harassing another cruise participant.

Federal and Community Review



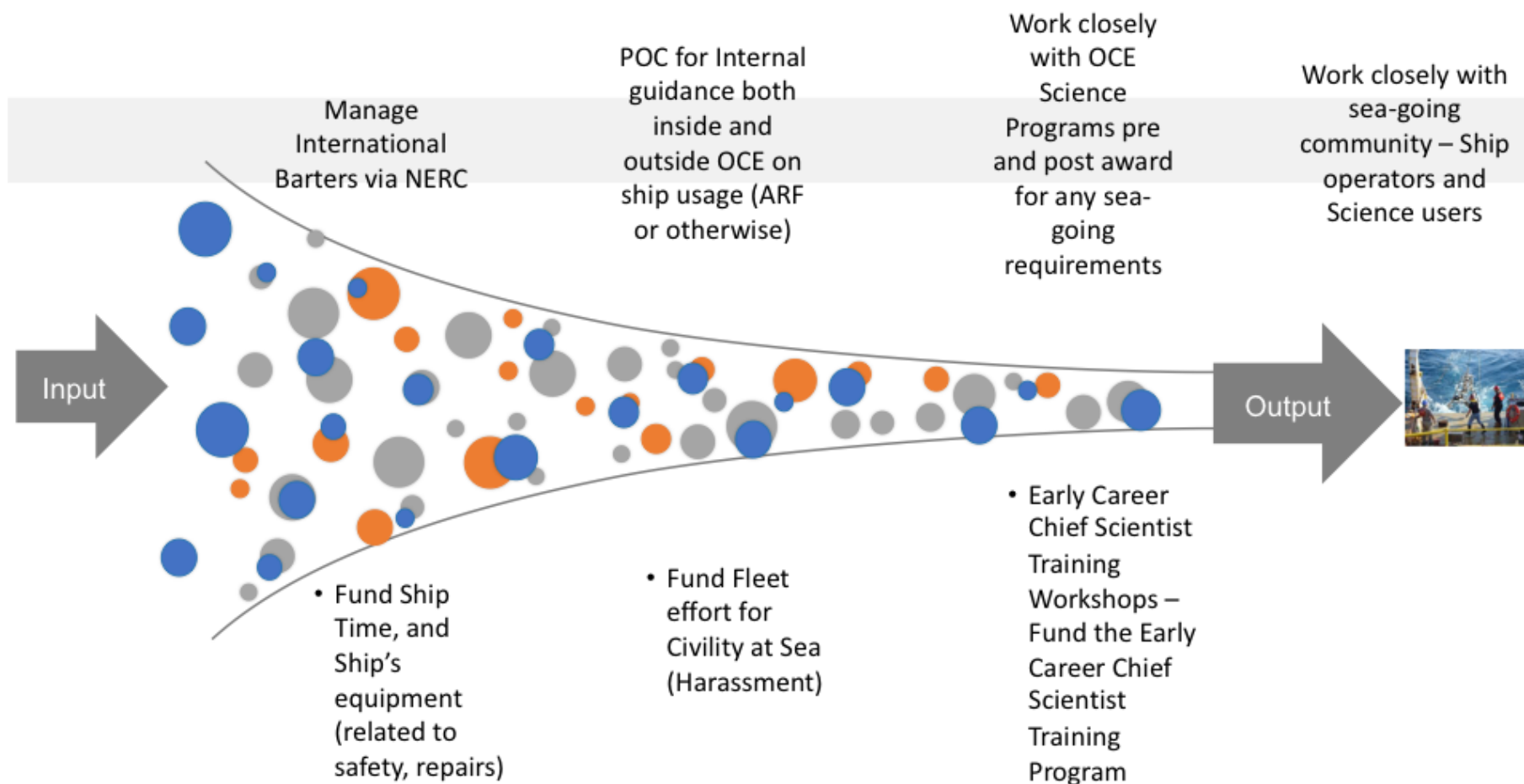
Science Peer Review



NSF Ship Operations Process



IPS Ship Operations Team



Ship Scheduling POC for NSF/OCE programs

Work closely with ONR, as owners of Global and Ocean Class Vessels, UNOLS on scheduling and Ship-centric initiatives



NSF Cognizant agency of the Academic Research Fleet (ARF) - requires oversight responsibility for the Fleet



Manage Cooperative Agreements with 16 operating institution, currently 18 vessels

Negotiate and approve Ship and MOSA Rates
Ensure compliance with Terms and Conditions of CA
Approve MOSA expenses
Be available to operators for emergencies on any ship related incident

Academic Research Fleet CY 18
TOTAL Costs \$102,334,824 = 63 % NSF Support



■ NSF Total ■ Other