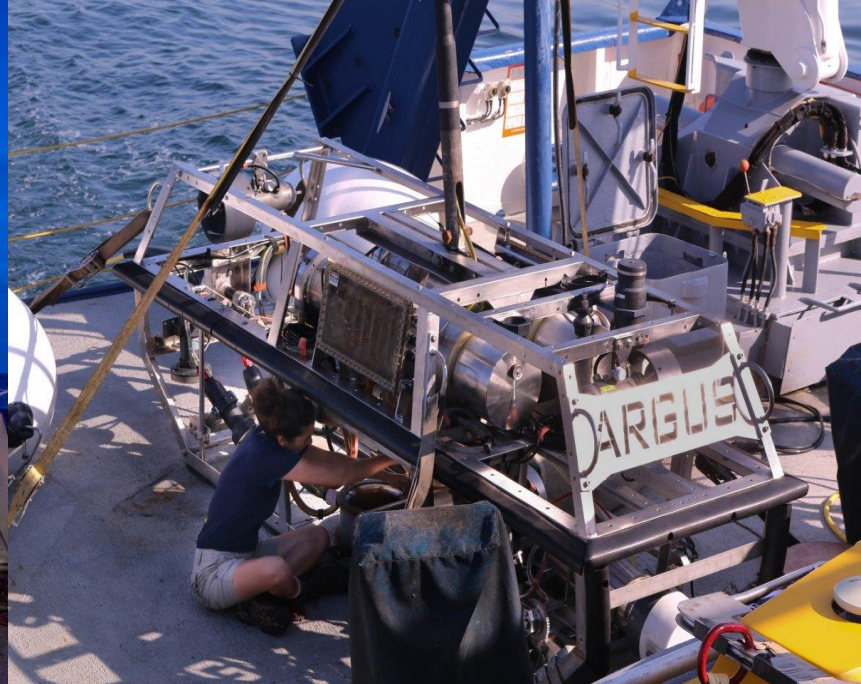
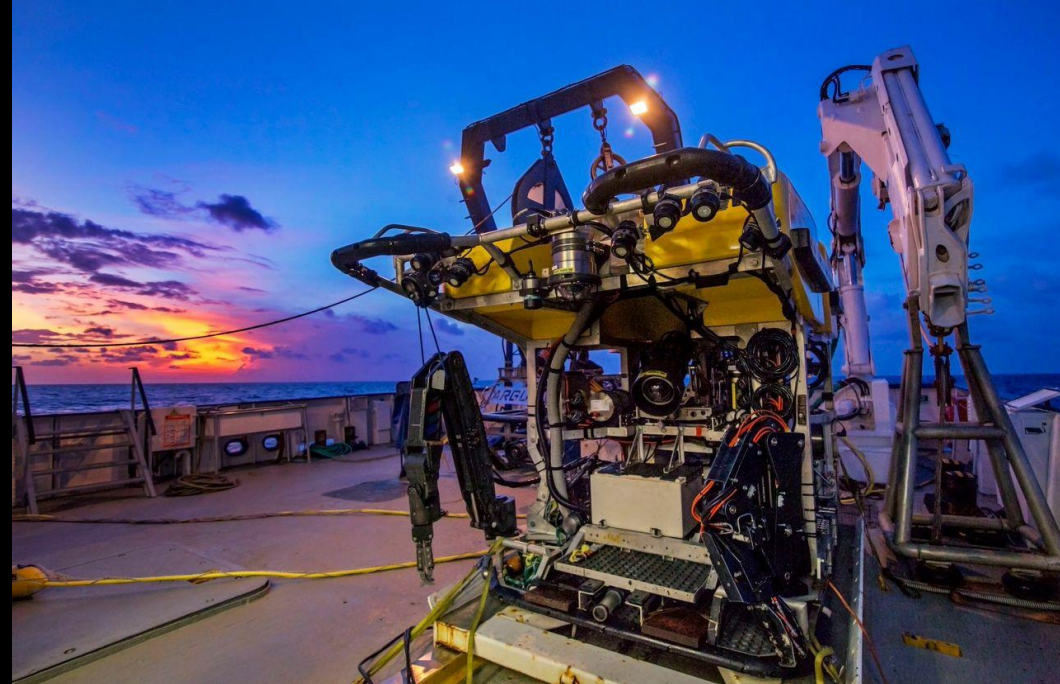


The Ocean Exploration Trust (OET) based in  
New London, CT  
owns and operates the E/V NAUTILUS





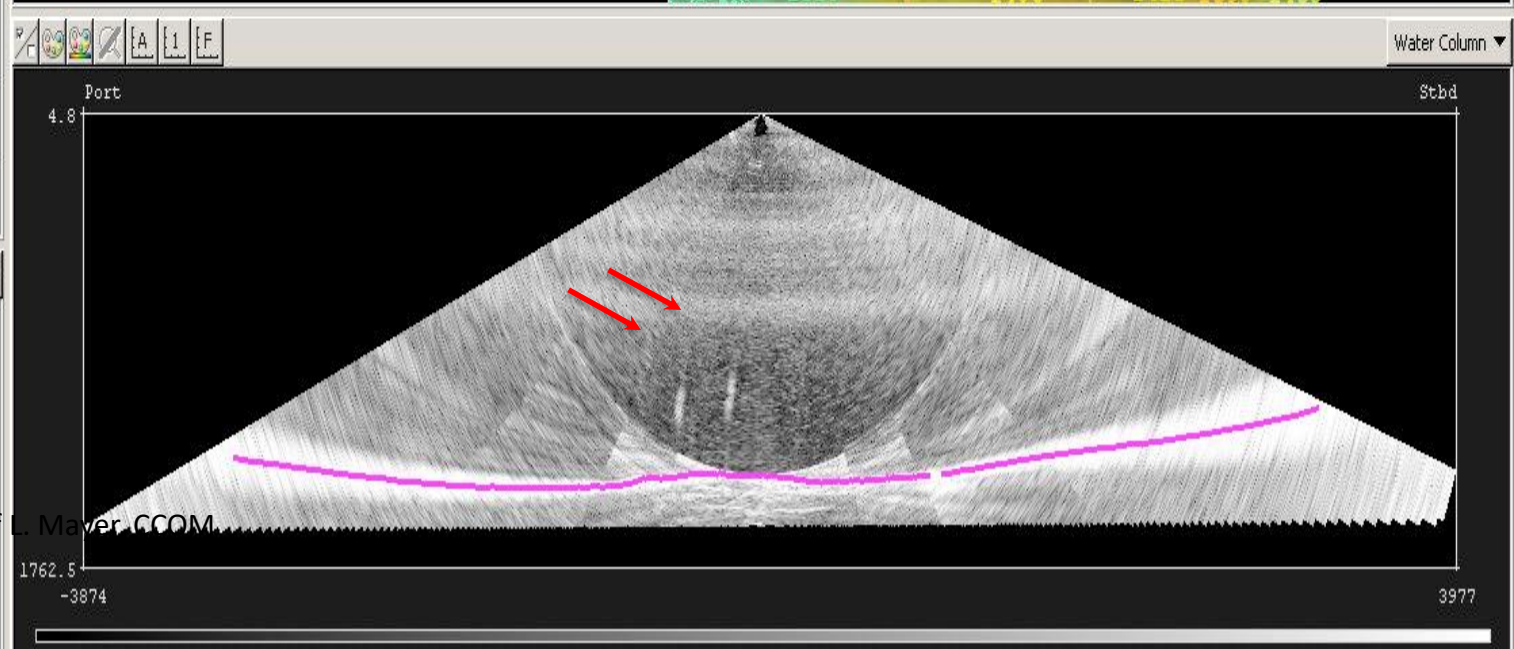
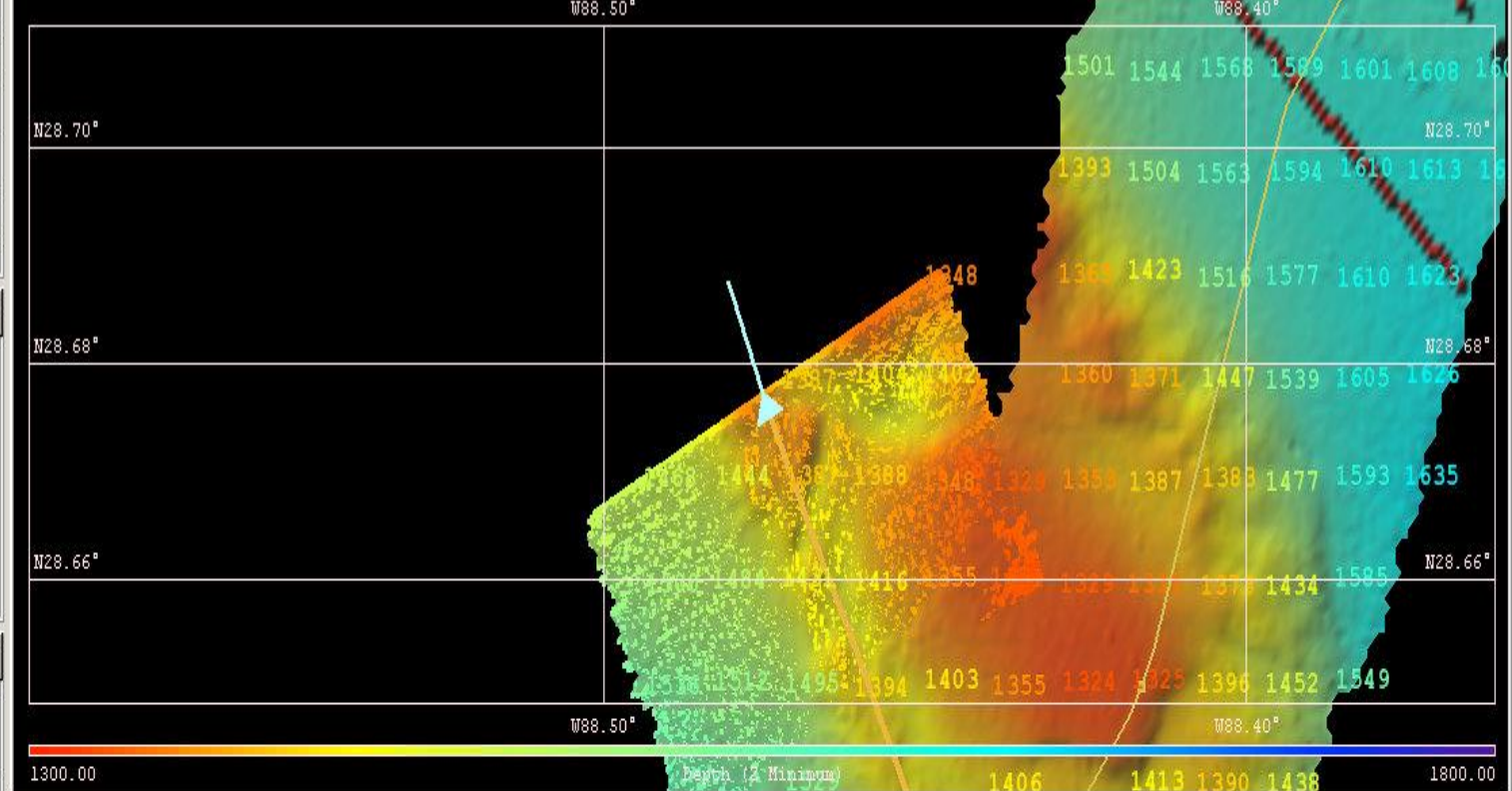
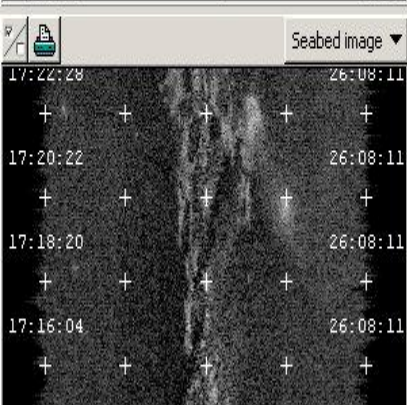
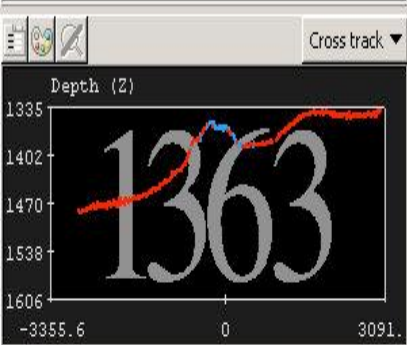
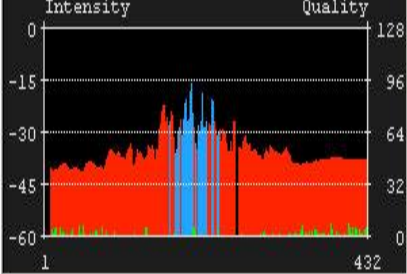
# Emphasis in Tele-presence via the Center for Ocean Exploration at GSO/URI with its Inner Space Center



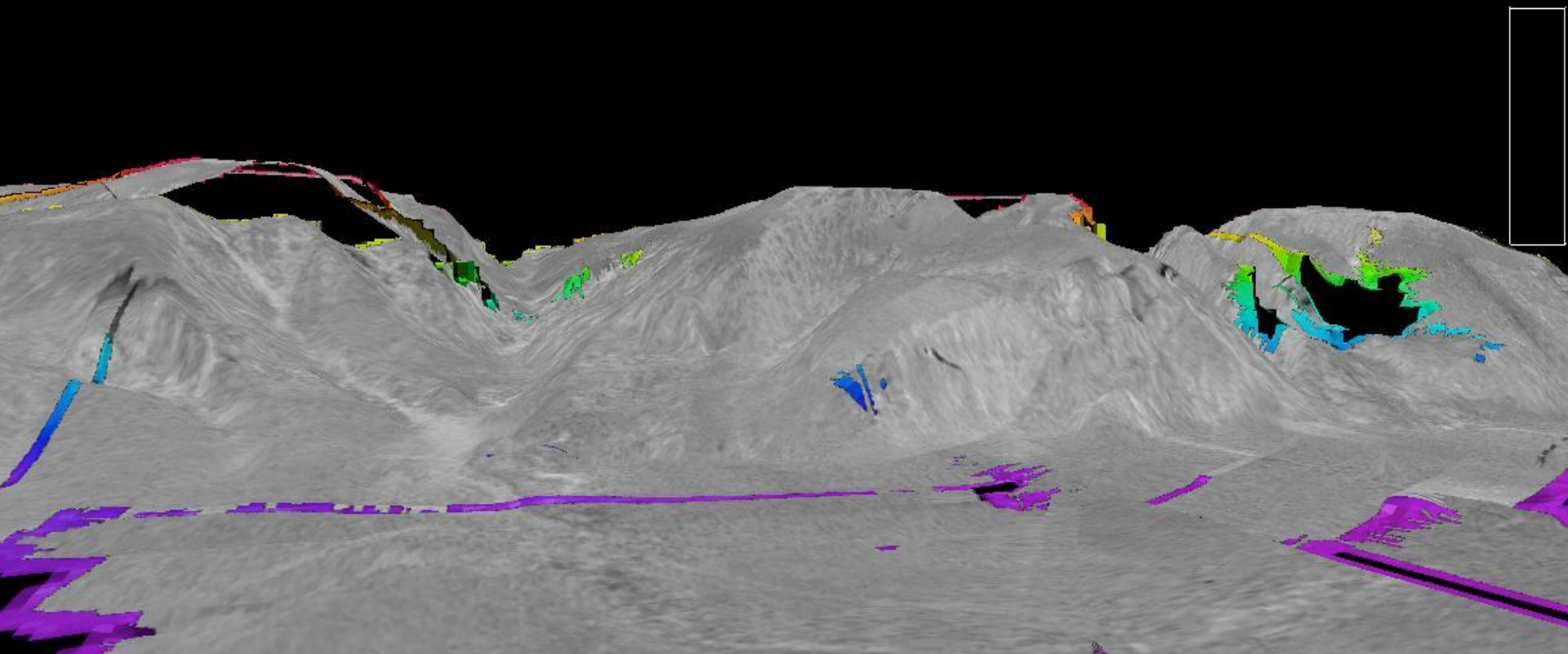
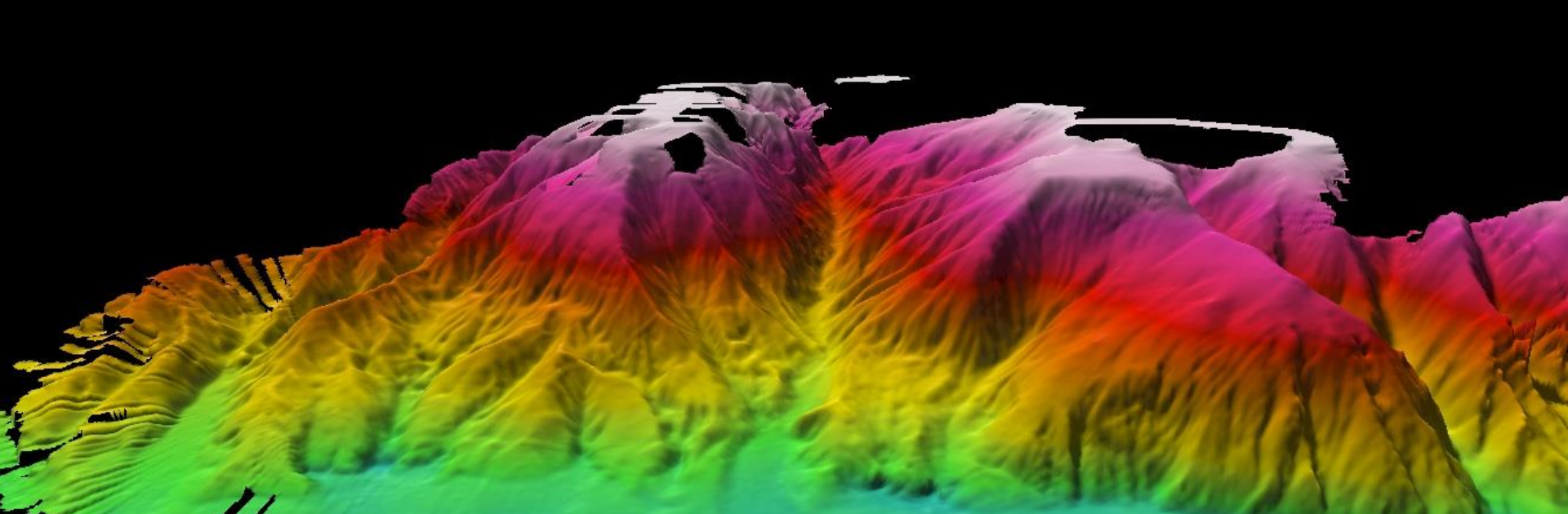


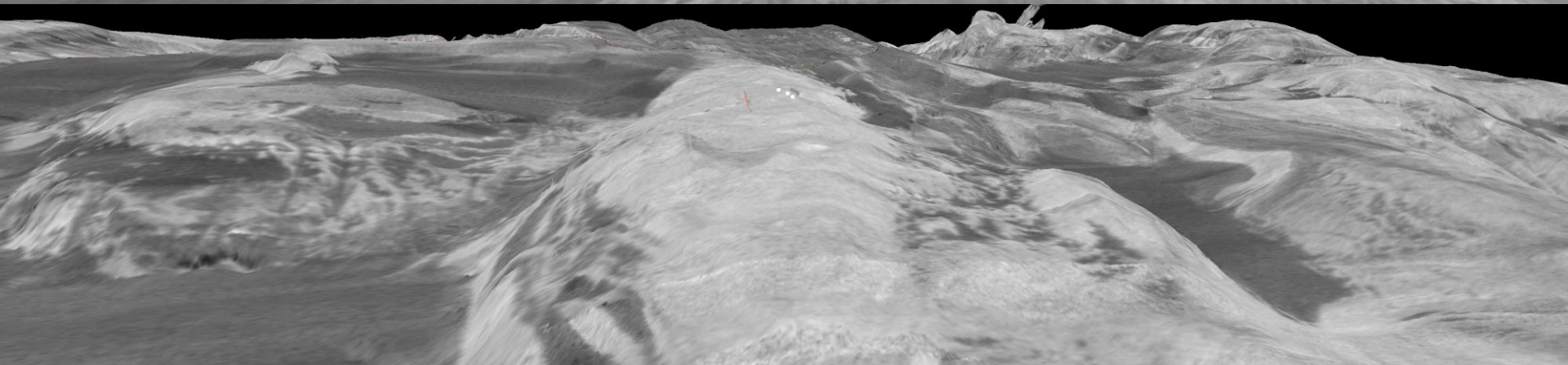
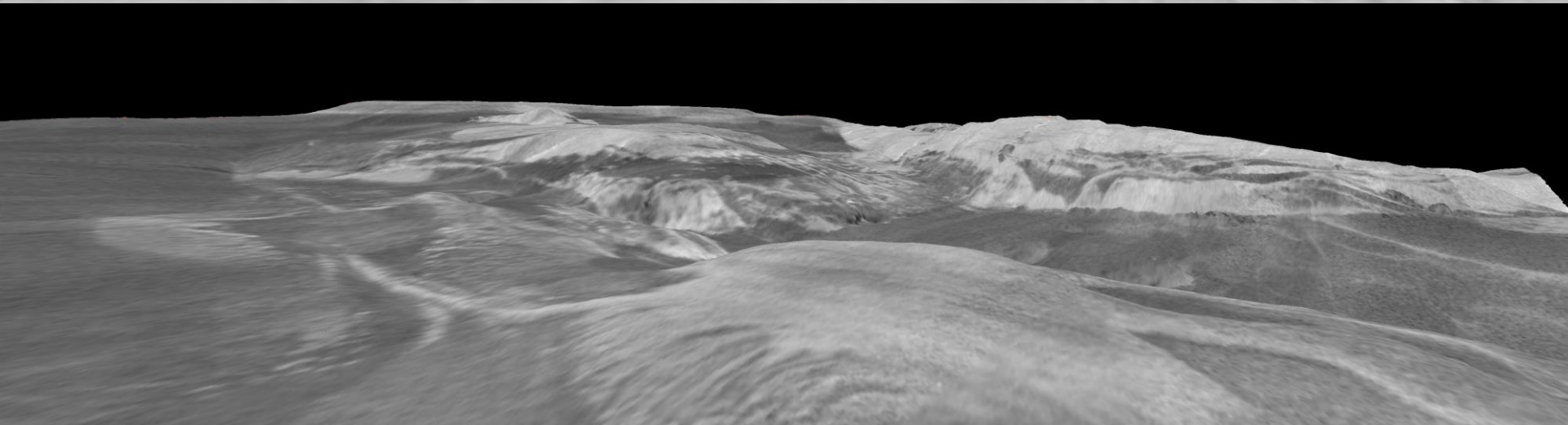
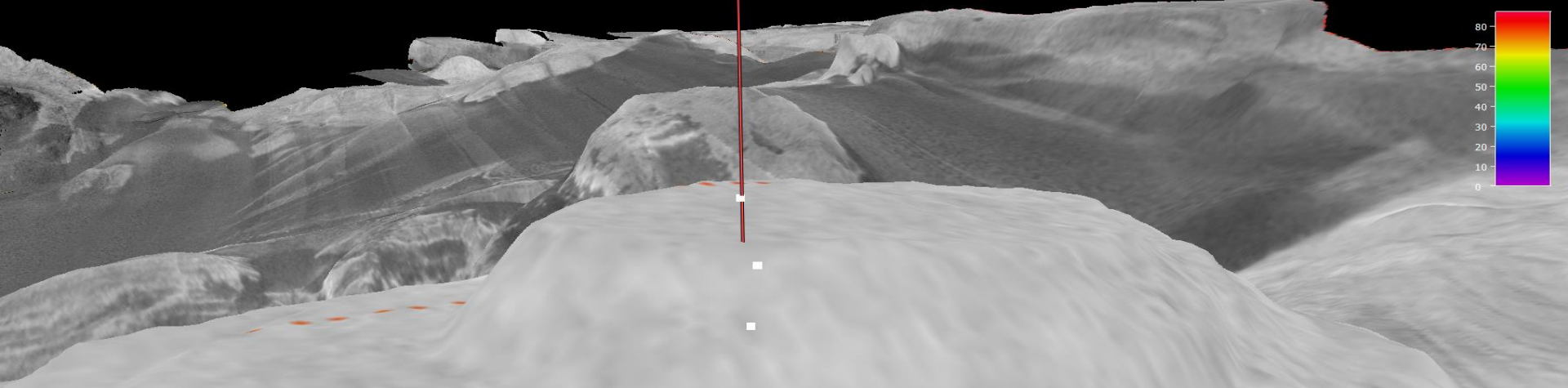












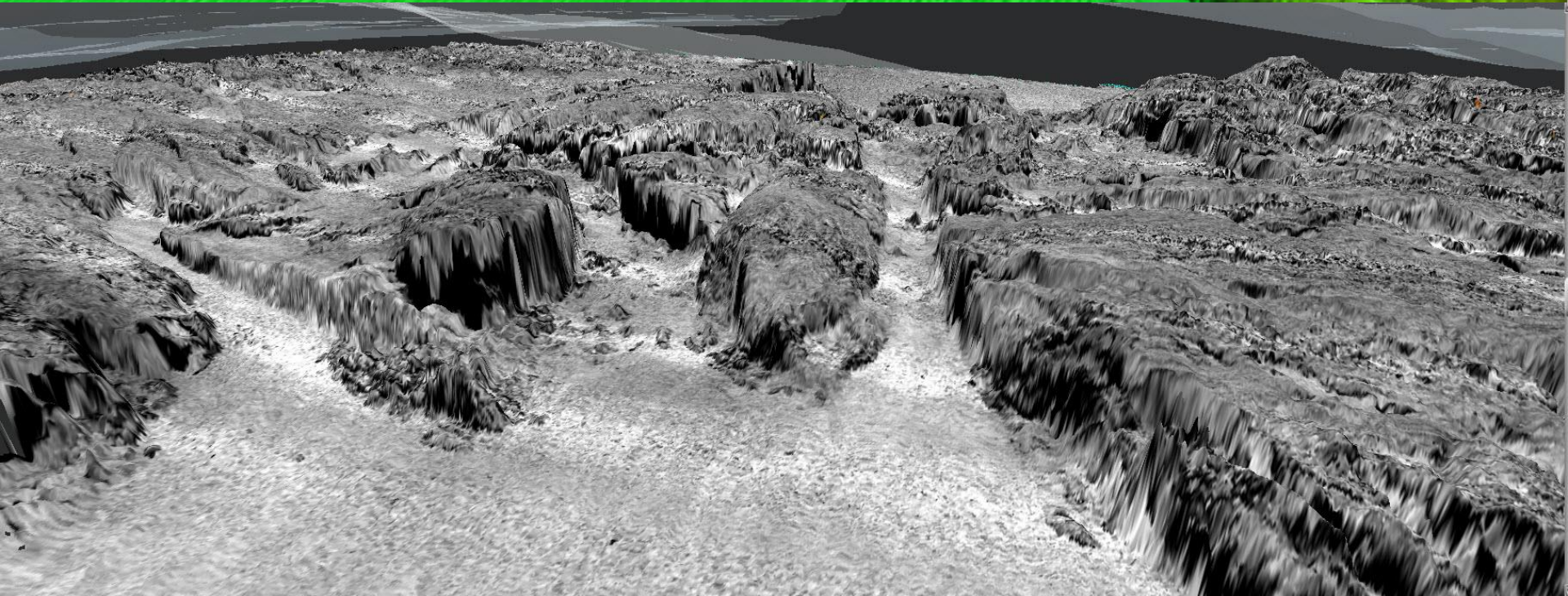
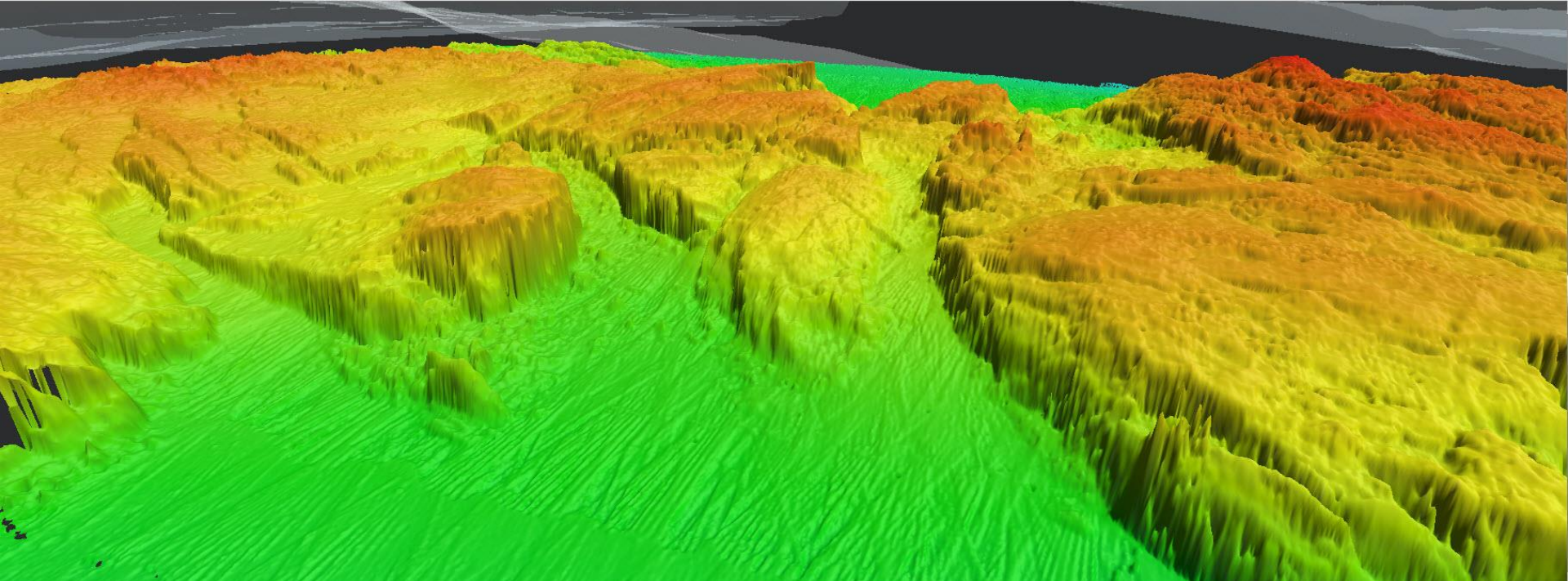






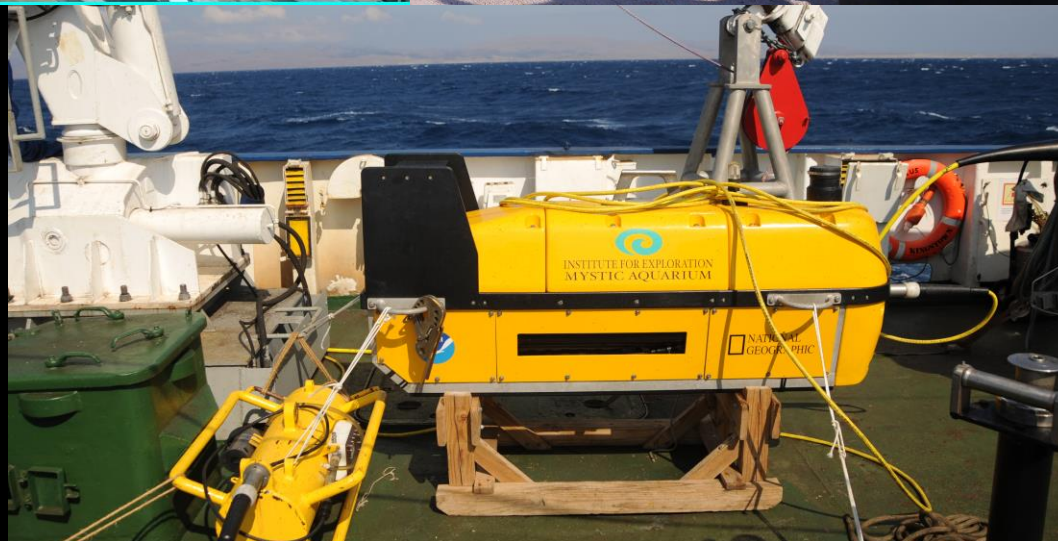
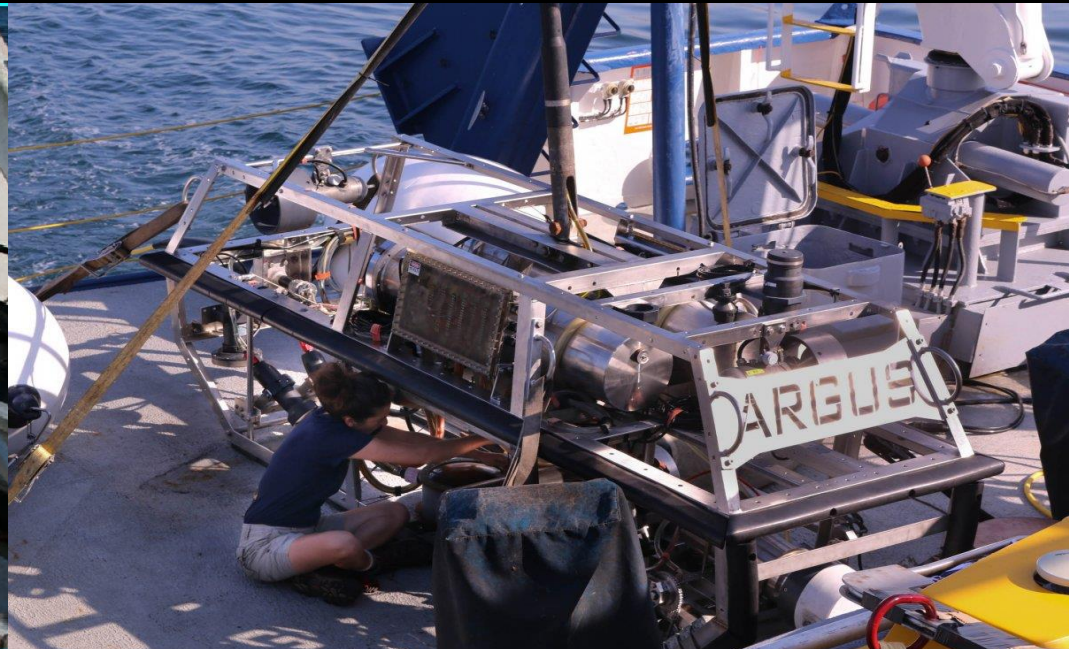




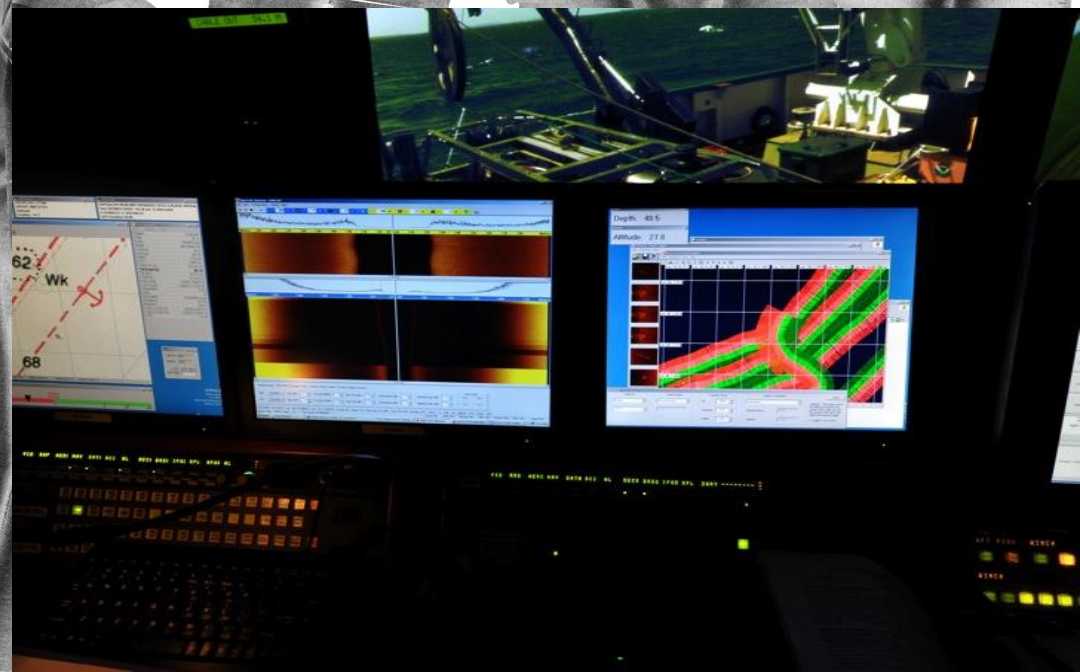
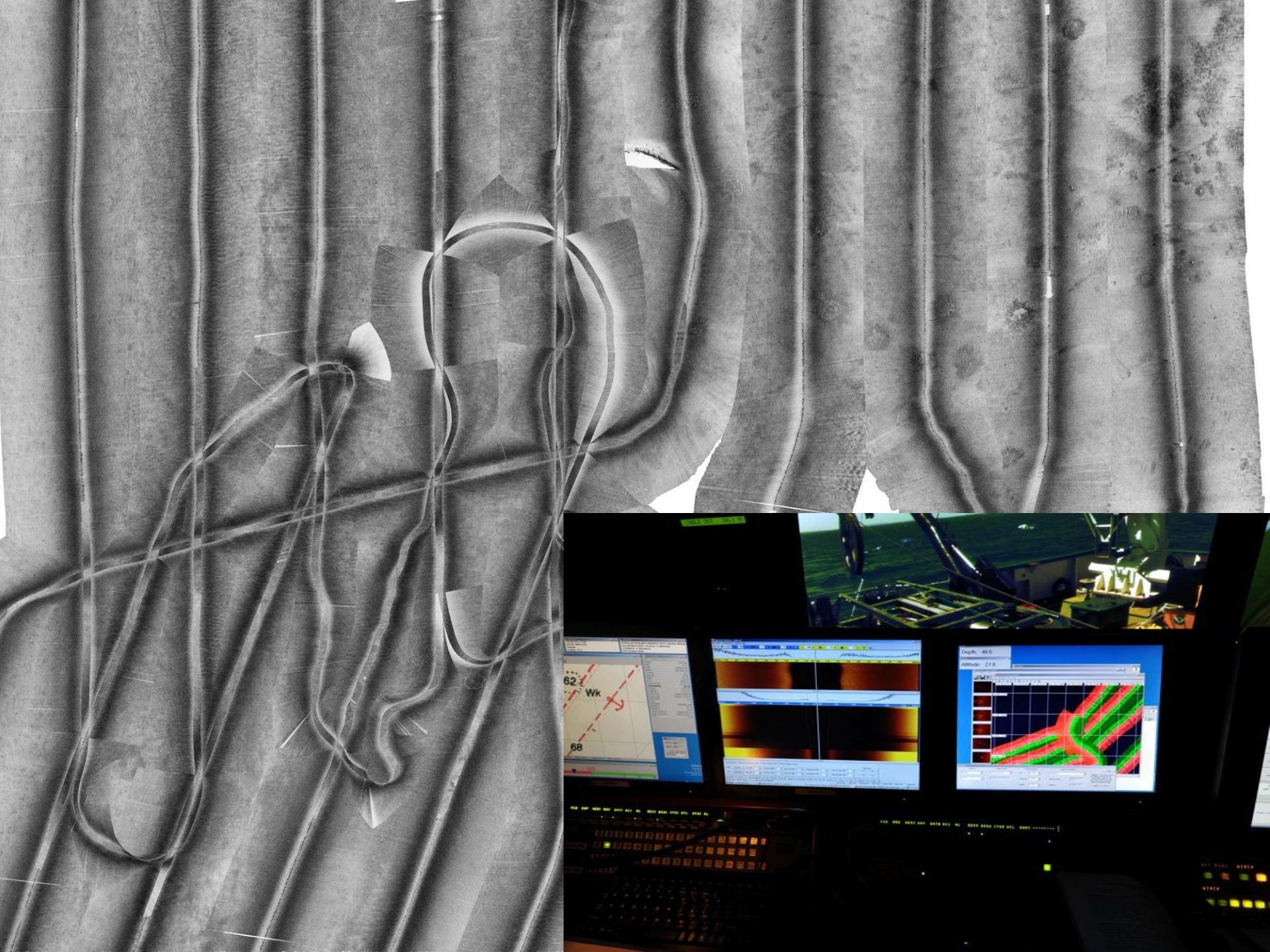




# 6,000- meter Edgetech Dual Frequency Side-scan Sonar System in Multiple Configurations









# Elevators







NATIONAL  
GEOGRAPHIC







CANADIAN SEAMOUNTS

OCEAN NETWORKS CANADA

CASCADIA MARGIN

PACIFIC SEAMOUNTS

MONTEREY BAY NMS

CALIFORNIA BORDERLANDS

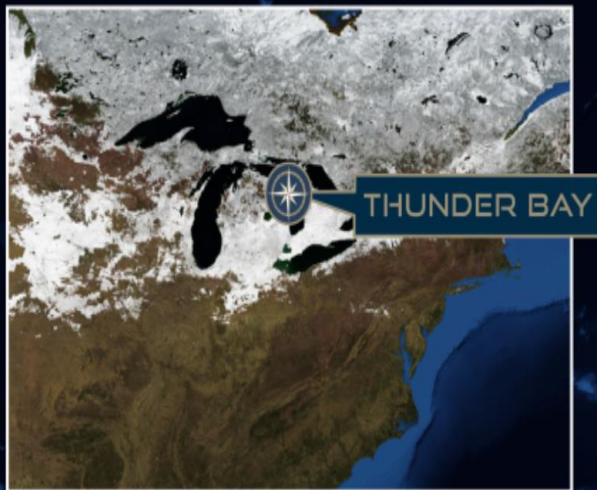
PAPAHĀNAUMOKUĀKEA MNM

LŌ'IHI SEAMOUNT

CLARION-CLIPPERTON  
FRACTURE ZONE

NAUTILUS LIVE

2018



MID OCEAN  
SEAMOUNTS

GORDA RIDGE

MONTEREY  
CORDELL BANK  
GREATER FARALLONES

ABYSS

OSBORN BANK

CHANNEL  
ISLANDS

HAWAII

JOHNSTON ISLAND

CLARION-CLIPPERTON  
FRACTURE ZONE

KINGMAN REEF

PALMYRA ATOLL

HOWLAND ISLAND

BAKER ISLAND

JARVIS ISLAND

GARDNER ISLAND

AMERICAN SAMOA

SAMOAN CLIPPER

2 0 1 9



NAUTILUS



MOBILE SYSTEM

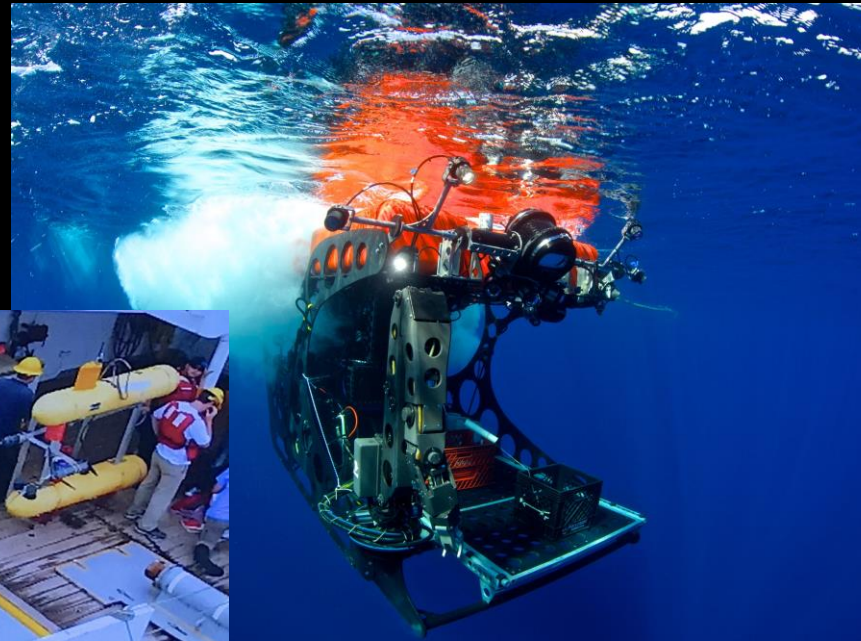






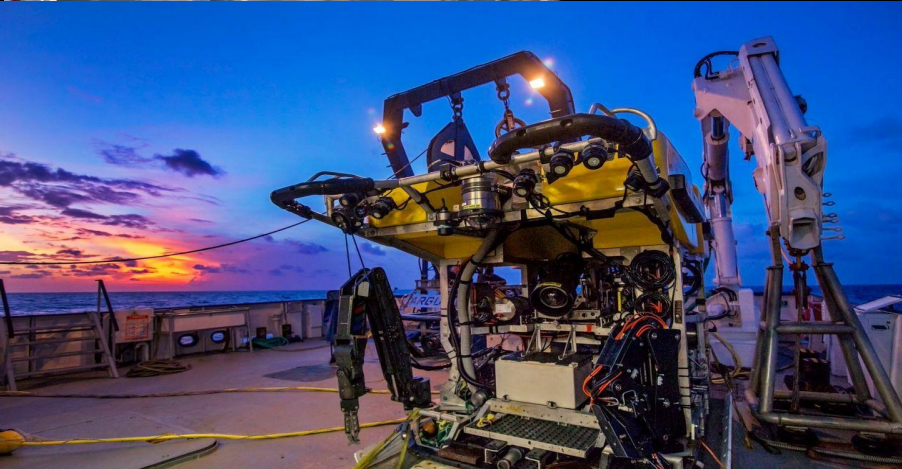
# 2,000-meter Mobile System

- Wet Lab/Single van Command Center
- NEREID Hybrid ROV/AUV
- EAGLE RAY AUV
- MOLA MOLA AUV



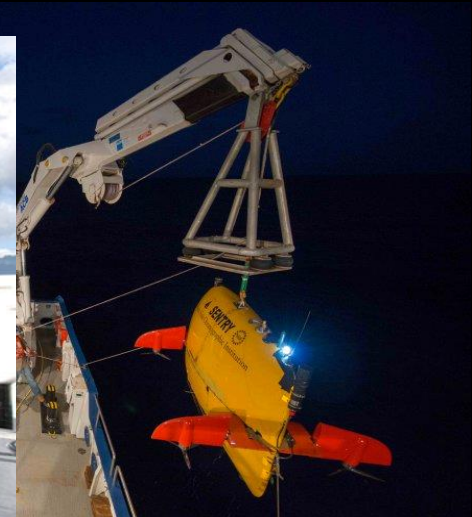
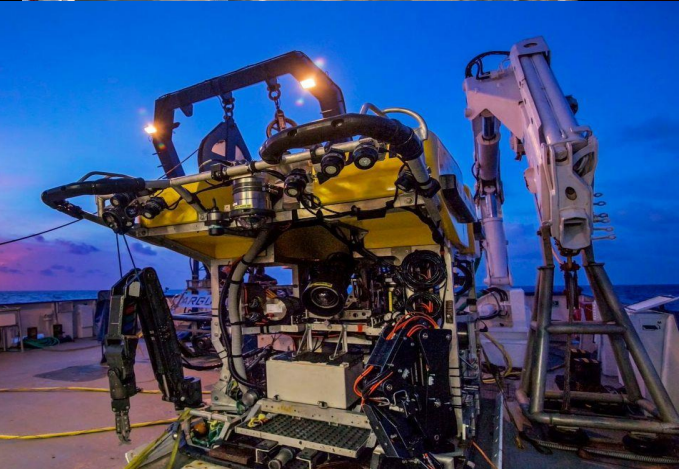
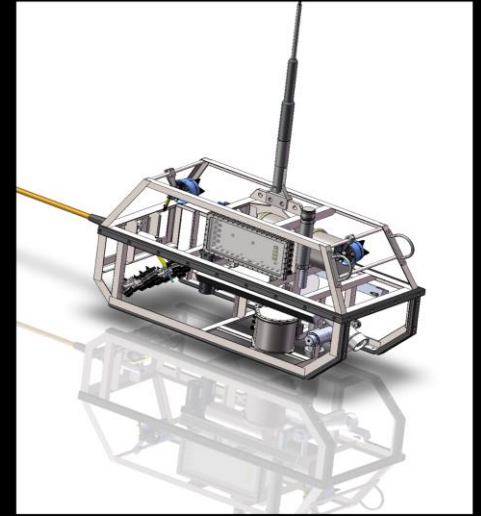


- 4,000-meter system
  - HERCULES I ROV
  - ARGUS I imaging vehicle either in support of HERCULES I or alone
  - Two-van Command Center
  - SENTRY AUV





- 6,000-meter system
  - LITTLE HERC ROV (OET) and HERCULES II
  - ARGUS II (OER) imaging vehicle either in support of ROVs or alone
  - Two-van Command Center (OER)
  - SENTRY AUV (WHOI)





2020



NAUTILUS



MOBILE SYSTEM

OCEAN NETWORKS CANADA

OLYMPIC COAST

CASCADIA MARGIN

EEZ MAPPING

MONTEREY BAY

CHANNEL ISLANDS

FLOWER GARDEN BANKS

SEAMOUNTS

PESCADERO BASIN

ECOGIG & GISR

SEEPS

MONTEREY WRECK

PUERTO RICO TRENCH

REVILLAGIGEDO ARCHIPELAGO

RED SEA





# 2021

