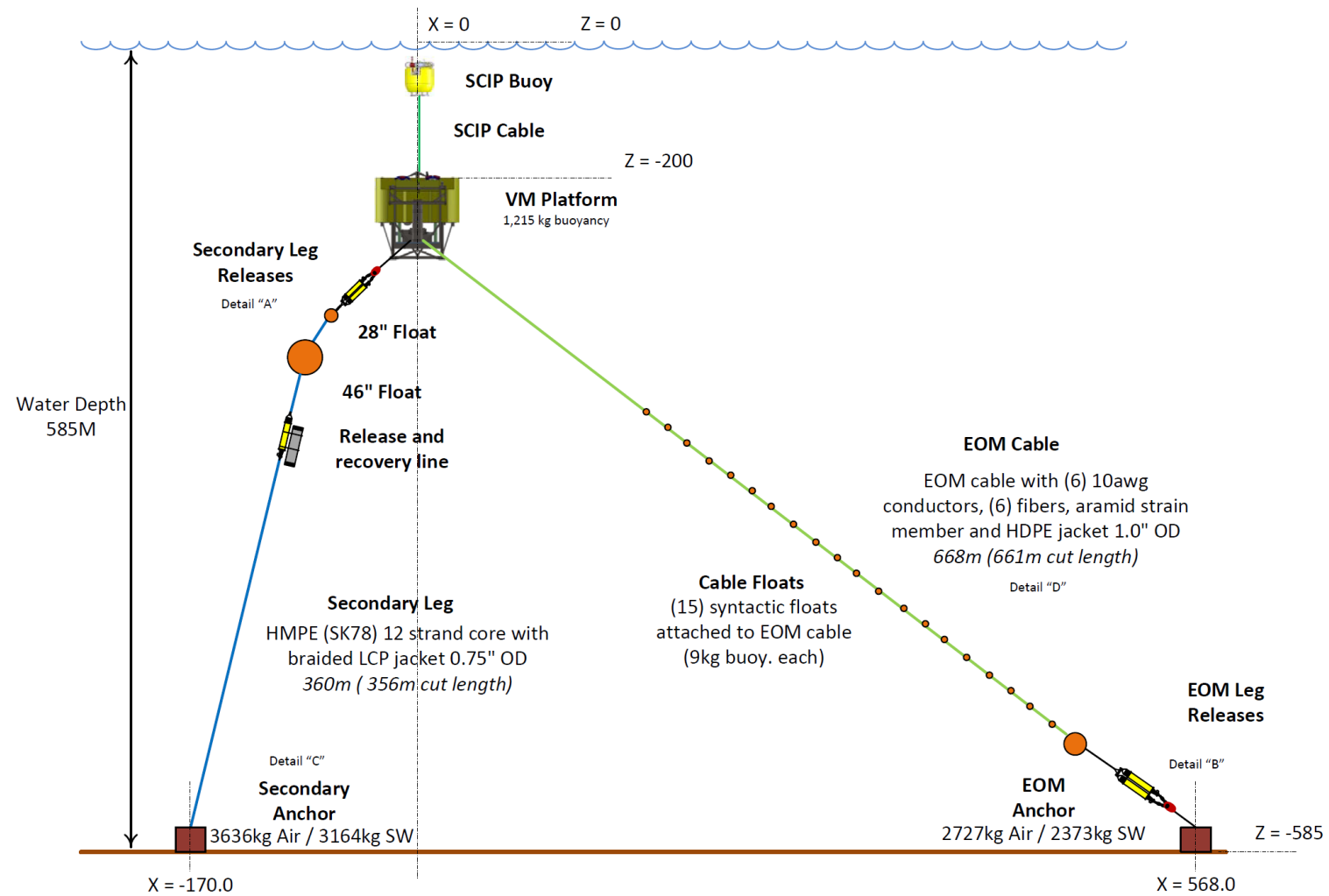


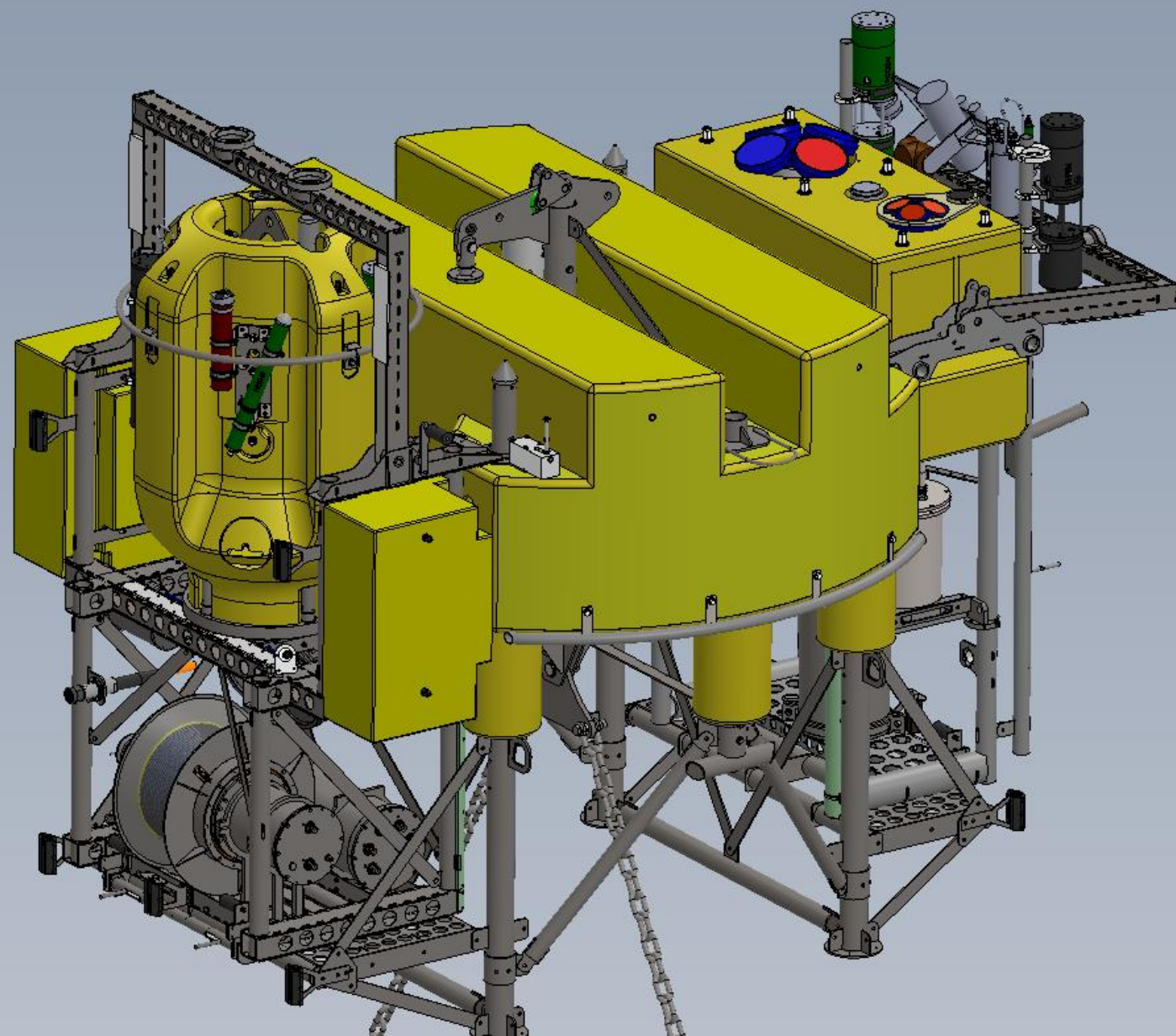
# Pelagic Research Services



## Shallow Profiler Recovery on the OOI Cabled Array

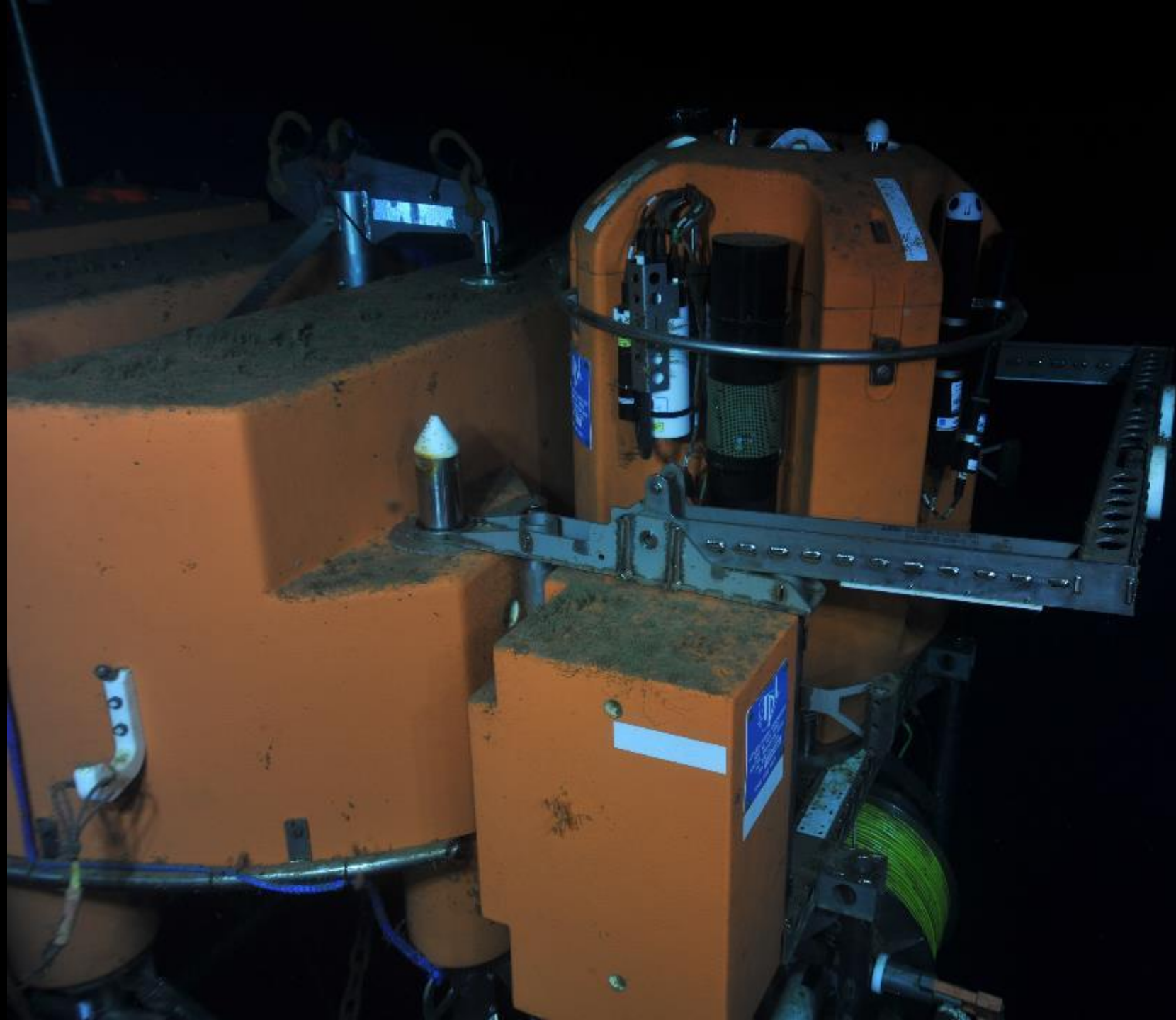
## RSN Endurance Vertical Mooring



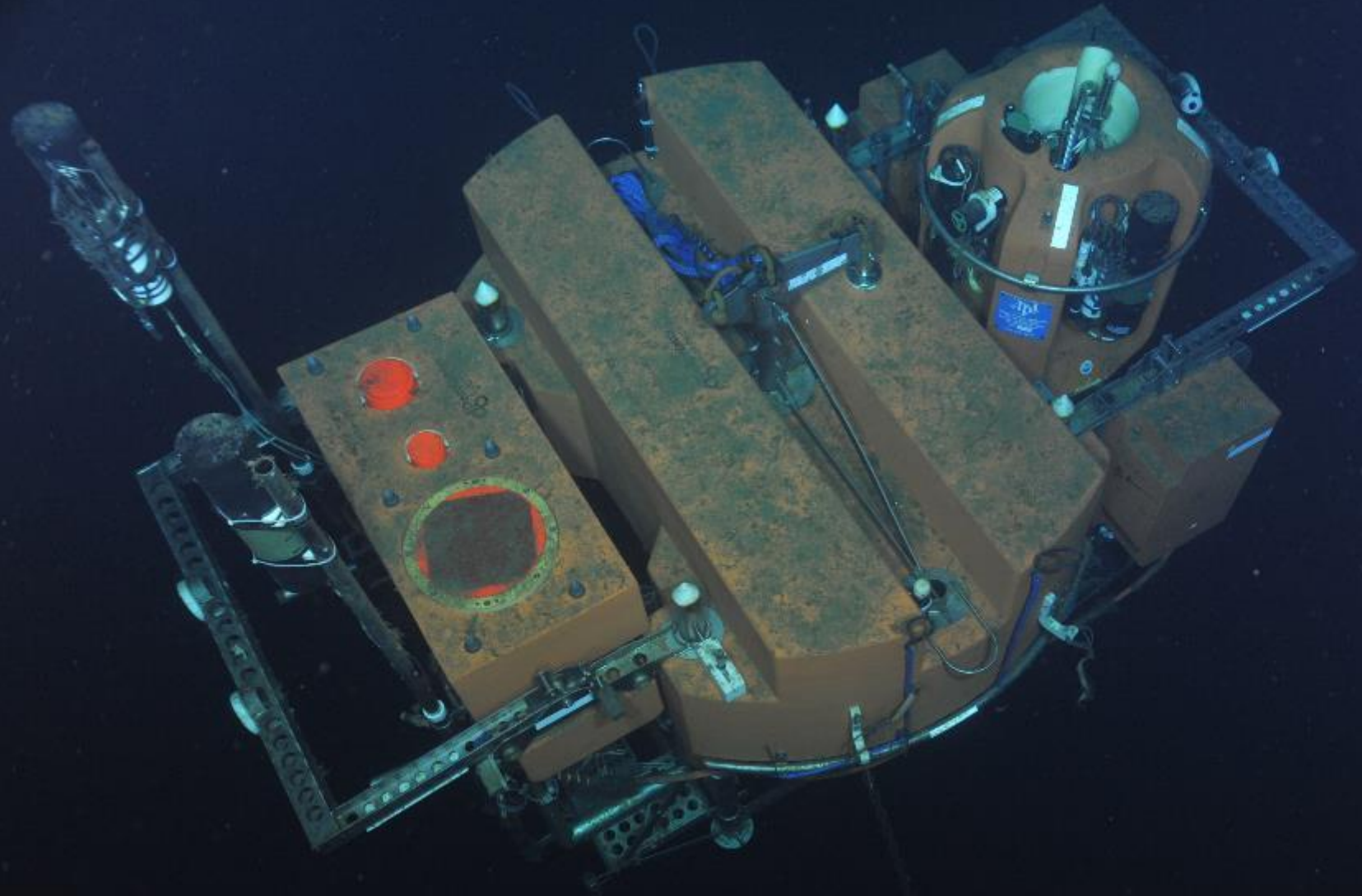


# Incident

- Mooring array contacted by fishing gear
- Telemetry lost
- Recovery of SciP float 2km from original mooring location
- Multibeam survey confirm the presence of mooring 2km away and a depth





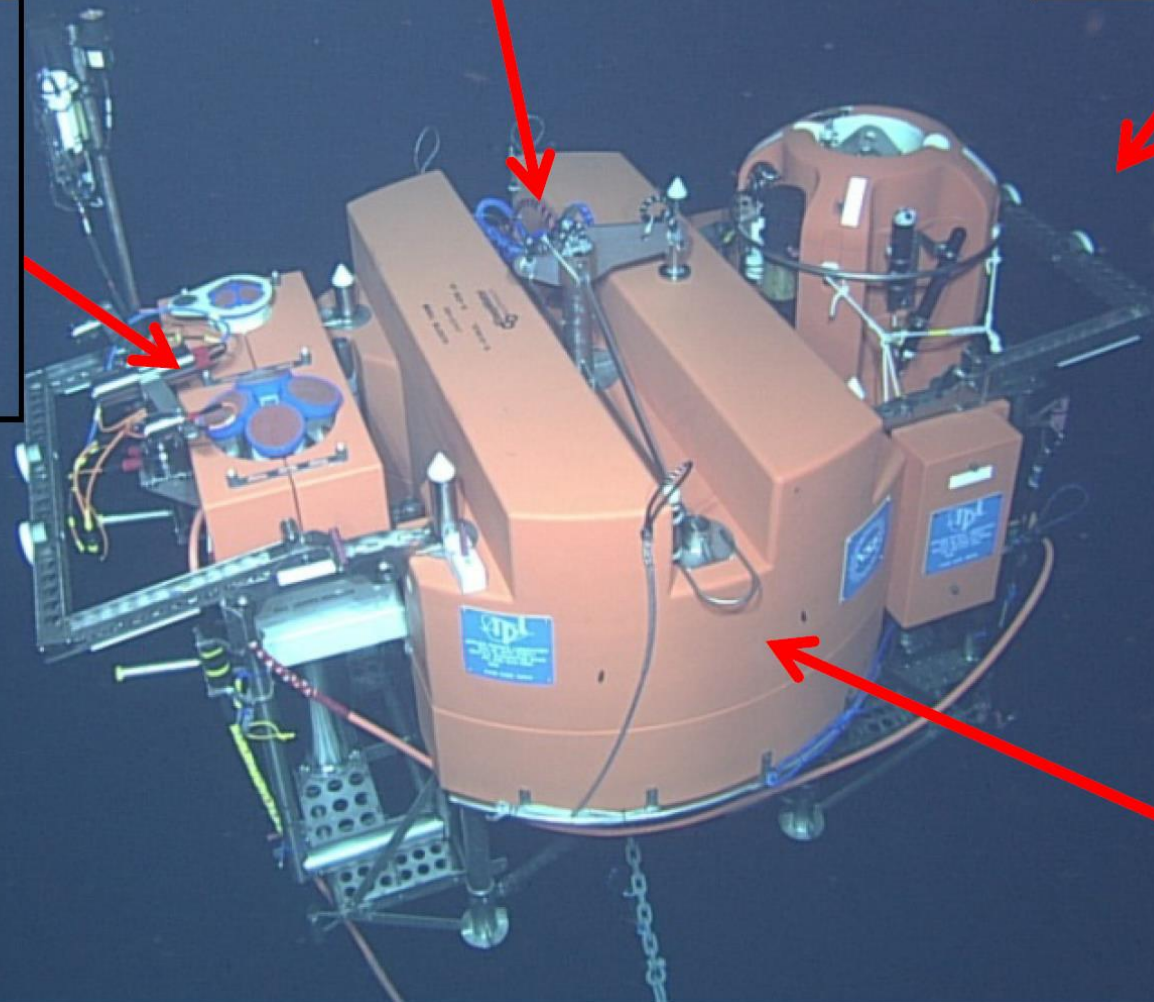


Center Lift

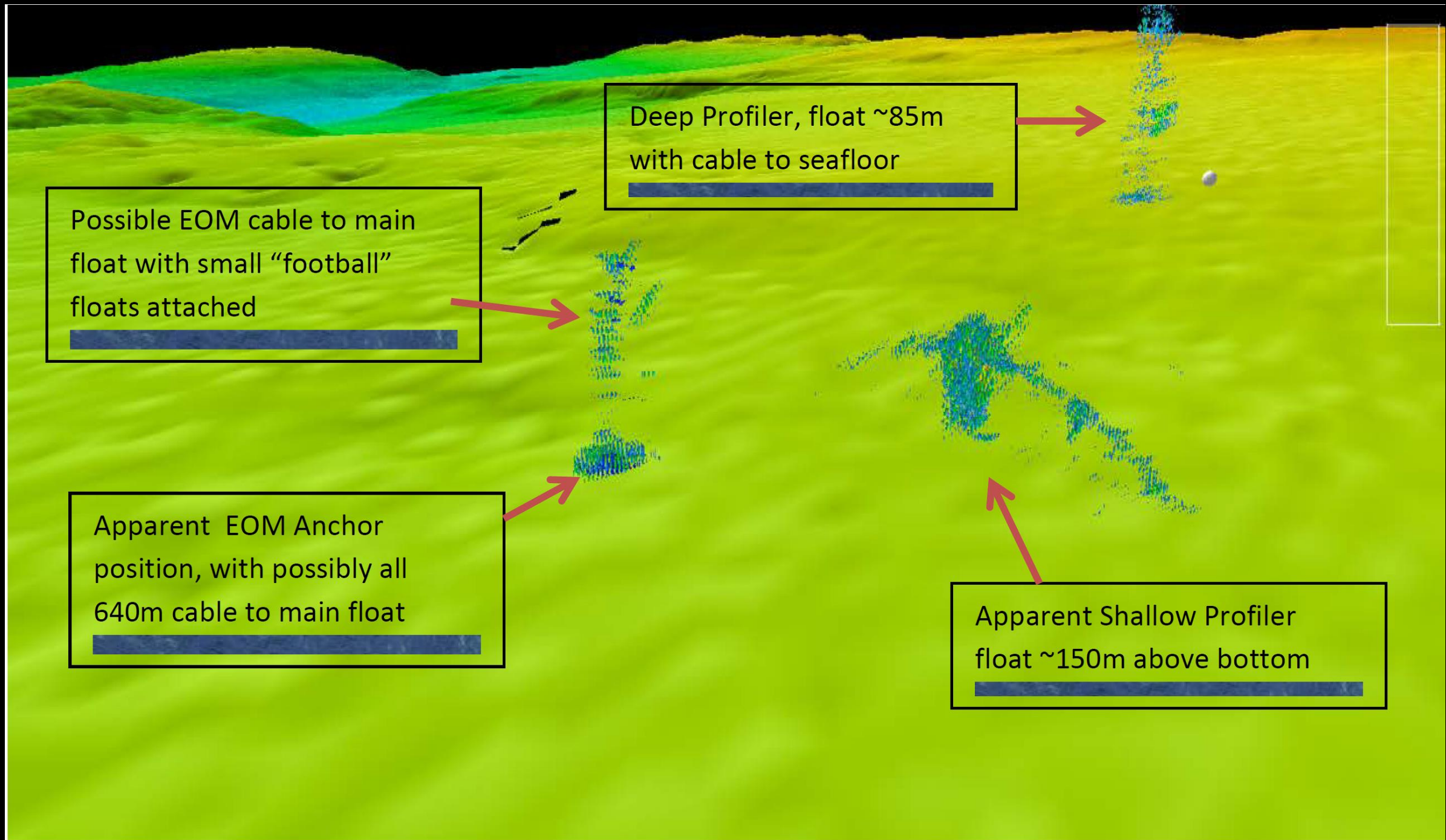
SciP and Winch  
Assembly

Platform Interface  
Assembly with  
instruments

Platform  
Float









# The Plan

- Visual inspection
- Clear net from mooring
- Utilizing acoustic releases - let go one side and recover entire mooring assembly at surface - then recover mooring anchors
- Grapple net and parts recover to ship

Drink Beer!

# What Found and What we did

Worse case scenario regarding mooring entangled with trawl

Best case scenario regarding recovery....and yes we drank beer afterwards!









UW018 Dive 01 Initial visual survey  
7/7/2018 10:04:32  
44 21.41904279 N  
124 57.64028494 W

Heading 171.6  
Depth (m) 623.8  
Alt (m) 100.0  
Pitch (deg) 1.4  
Roll (deg) -5.9



UW018 Dive 01 Initial visual survey  
7/7/2018 10:23:07  
44 21.4139244 N  
124 57.66606257 W

Heading 167.9  
Depth (m) 588.4  
Alt (m) 35.9  
Pitch (deg) -8.6  
Roll (deg) -6.8



UW018 Dive 01 Initial visual survey  
7/7/2018 10:24:10  
44 21.41261345 N  
124 57.66719445 W

Heading 184.0  
Depth (m) 577.5  
Alt (m) 46.9  
Pitch (deg) -9.4  
Roll (deg) -5.8

UW018 Dive 01 Initial visual survey  
7/7/2018 10:25:08  
44 21.41207029 N  
124 57.6664976 W

Heading 166.7  
Depth (m) 566.2  
Alt (m) 57.9  
Pitch (deg) -9.2  
Roll (deg) -5.8





UW018 Dive 01 Initial visual survey  
7/7/2018 10:25:21  
44 21.41243702 N  
124 57.66718545 W

Heading 195.8  
Depth (m) 562.4  
Alt (m) 62.3  
Pitch (deg) -2.4  
Roll (deg) -12.4



UW018 Dive 01 Initial visual survey  
7/7/2018 10:28:45  
44 21.42283628 N  
124 57.6550422 W

Heading 219.3  
Depth (m) 555.1  
Alt (m) 69.1  
Pitch (deg) -11.1  
Roll (deg) -3.3



UW018 Dive 01 Initial visual survey  
7/7/2018 10:29:03  
44 21.42423978 N  
124 57.66622066 W

Heading 199.7  
Depth (m) 555.0  
Alt (m) 70.8  
Pitch (deg) -9.4  
Roll (deg) -5.4



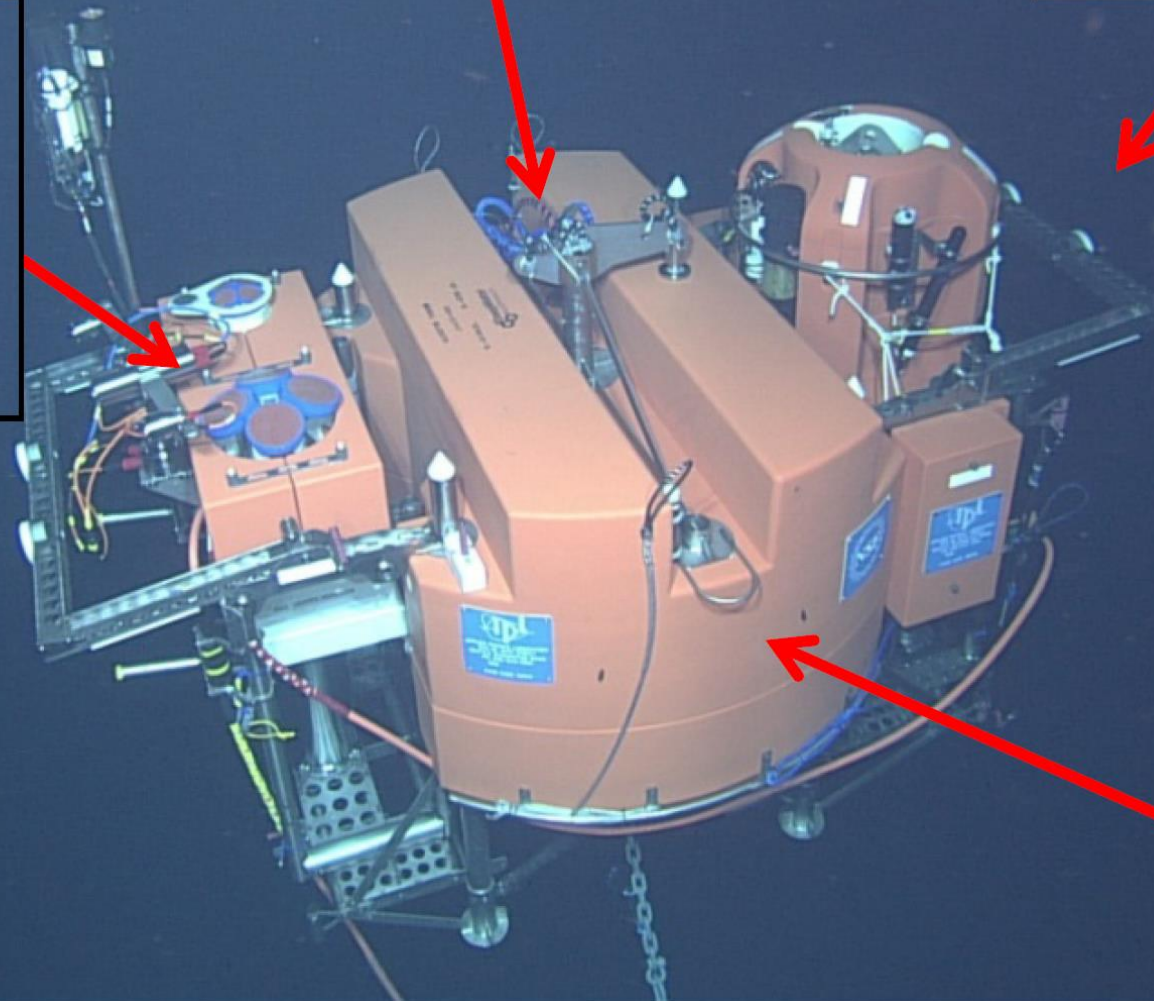


Center Lift

SciP and Winch  
Assembly

Platform Interface  
Assembly with  
instruments

Platform  
Float





UW018 Dive 01 Initial visual survey  
7/7/2018 10:29:03  
44 21.42423978 N  
124 57.66622066 W

Heading 199.7  
Depth (m) 555.0  
Alt (m) 70.8  
Pitch (deg) -9.4  
Roll (deg) -5.4













































































Thanks to the Captain and crew of the Bold Horizon

Thanks to UW team - truly a collaborative effort – planning, executing and follow-on!

Note images and drawings courtesy of UW and PRS, funding for this recovery was provided by NSF

Thanks..

