

DEEP SEARCH: AT-41

Caitlin Adams

NOAA Office of Ocean Exploration and Research



DEEP Sea Exploration to Advance Research on
Coral/Canyon/Cold Seep Habitats



DEEP SEARCH Study

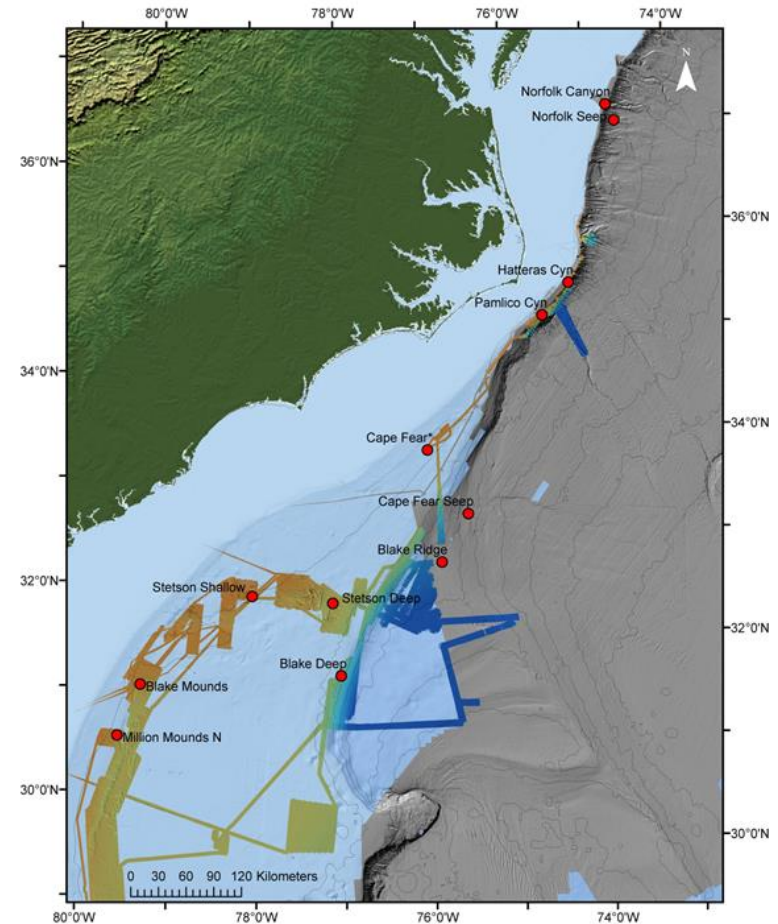
- 4.5 year BOEM-NOAA-USGS interagency project
- BOEM science contractor: TDI-Brooks International, project manager: Dr. Erik Cordes (Temple University)
- USGS supporting 5 complementary science teams, lead: Dr. Amanda Demopoulos
- Goal: understand the ecology and distribution of sensitive deep-sea habitats within the Mid- and South Atlantic planning area to inform future management and conservation of natural resources

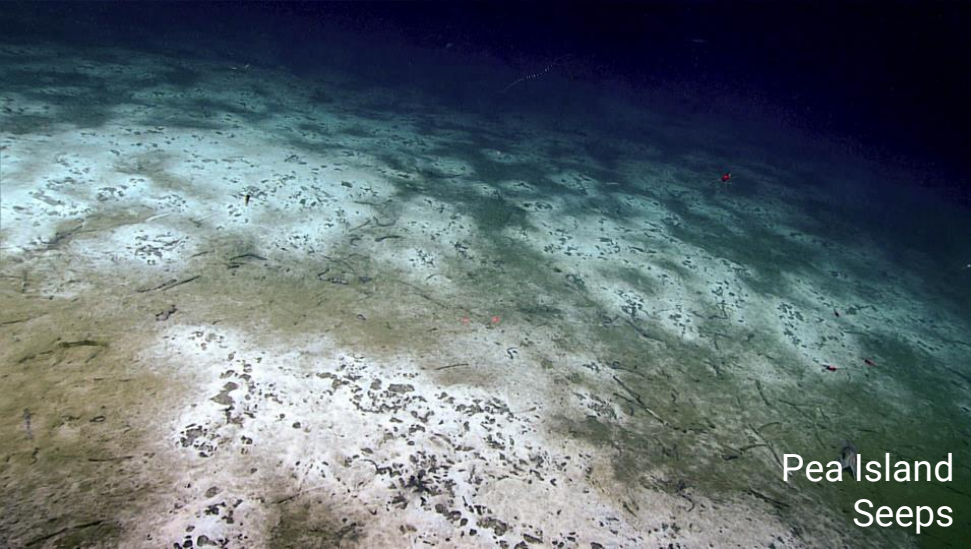


DEEP Sea Exploration to Advance Research on
Coral/Canyon/Cold Seep Habitats

AT-41 Summary

- R/V *Atlantis*, HOV *Alvin*
- August 19 - September 2, 2018
- 11 dives at 3 canyons, 2 seeps, and 4 coral sites
- Augmented *Okeanos Explorer* mapping in the region with an additional 8,233 square kilometers mapped
- Collected biological and geological samples with HOV, CTD casts, monocoore, and multicore
- Discovered 85 miles of discontinuous *Lophelia* reef 160 miles offshore Charleston, SC





Pea Island
Seeps



Pamlico Canyon



Richardson
Ridge

Scientists Discover Giant Deep-Sea Coral Reef Off Atlantic Coast

The chief scientist on the expedition said it was like nothing he'd seen before.



By Chris D'Angelo

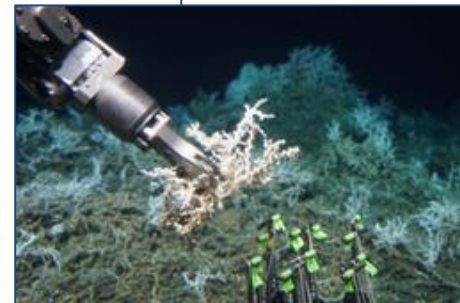


© 2011 Ocean Research

The deep-sea submarine Alvin is hoisted from the RV Atlantis off the coast of Delaware on Monday. A research team has planned 12 dives over the next two weeks to explore and study deep ocean ecosystems off the southeast coast.

THE ATLANTIC OCEAN — As the research vessel Atlantis made its way out to sea from Woods Hole, Massachusetts, last week, expedition chief scientist Erik Cordes predicted the team would discover something no one has ever seen before. It didn't take long.

Some 160 miles off the coast of Charleston, South Carolina, a half mile below the ocean surface, is a dense forest of cold water corals. And based on their observations and recent sonar mapping of the ocean floor, researchers estimate that the reef runs for at



[Video here](#)

DEEP Sea Exploration to Advance Research on
Coral/Canyon/Cold Seep Habitats

**DEEP
SEARCH**
EXPLORE • INFORM • PROTECT