

# Arctic Icebreaker Coordinating Committee (AICC) Report

Bob Campbell

Graduate School of Oceanography

University of Rhode Island

# AICC Current Membership

Aguilar-Islas, Ana UAF 10/15 to 10/21

Campbell, Robert (Chair, AICC) URI 01/16 to 01/19

Hartz, Steve | (RVTEC Rep, ex-officio) UAF 05/07

Laney, Sam WHOI 10/15 to 10/21

Lomas, Michael Bigelow Laboratory 08/14 to 08/20

Persson, Ola CU-Boulder 10/15 to 10/21

Polashenski, Christopher USACE-CRREL 08/14 to 08/20

Ruppel, Carolyn USGS 10/15 to 10/21

Russell, Doug | (RVOC Rep, ex-officio, AICC) UW 09/13

Welker, Jeff UAA 10/15 to 10/21

# Meetings 2018

- \* AICC Winter Meeting, Jan 10 and 11, 2018, US Coast Guard Facility, Seattle, WA
- \* AICC Summer Meeting, June 13, 2018 via WebEx Teleconference

# Winter Meeting

- \* Agency Reports
- \* Healy and Sikuliaq Updates
- \* Eastern Arctic Healy Deployments
- \* Special Reports
  - \* NPRB Arctic Program (5 yr, \$18.5 M)
  - \* Alaska Eskimo Whaling Commission
- \* Healy Debriefs
  - \* Medical Forms
- \* Assessment of Conflict Avoidance Agreements

# Summer Meeting

- \* NSF and CG Headquarters Reports
- \* PRV Acquisition Status
- \* Update on Healy Preparations for 2018
- \* Research Cruise Matrix
- \* Changes in Healy Mob/Demob Policies

# USCGC Healy Upcoming Schedule

- \* 2019 Extended Dry Dock for Ballast Tank Preservation (6 mo.)
  - \* Might curtail some 2019 science availability
- \* 2020 US State Dept. Request Healy Support Antarctic Treaty Inspection (Jan – May)
  - \* Polar Star not capable
  - \* Will curtail science in Arctic in 2020

# New Heavy Polar Icebreaker (PIB)

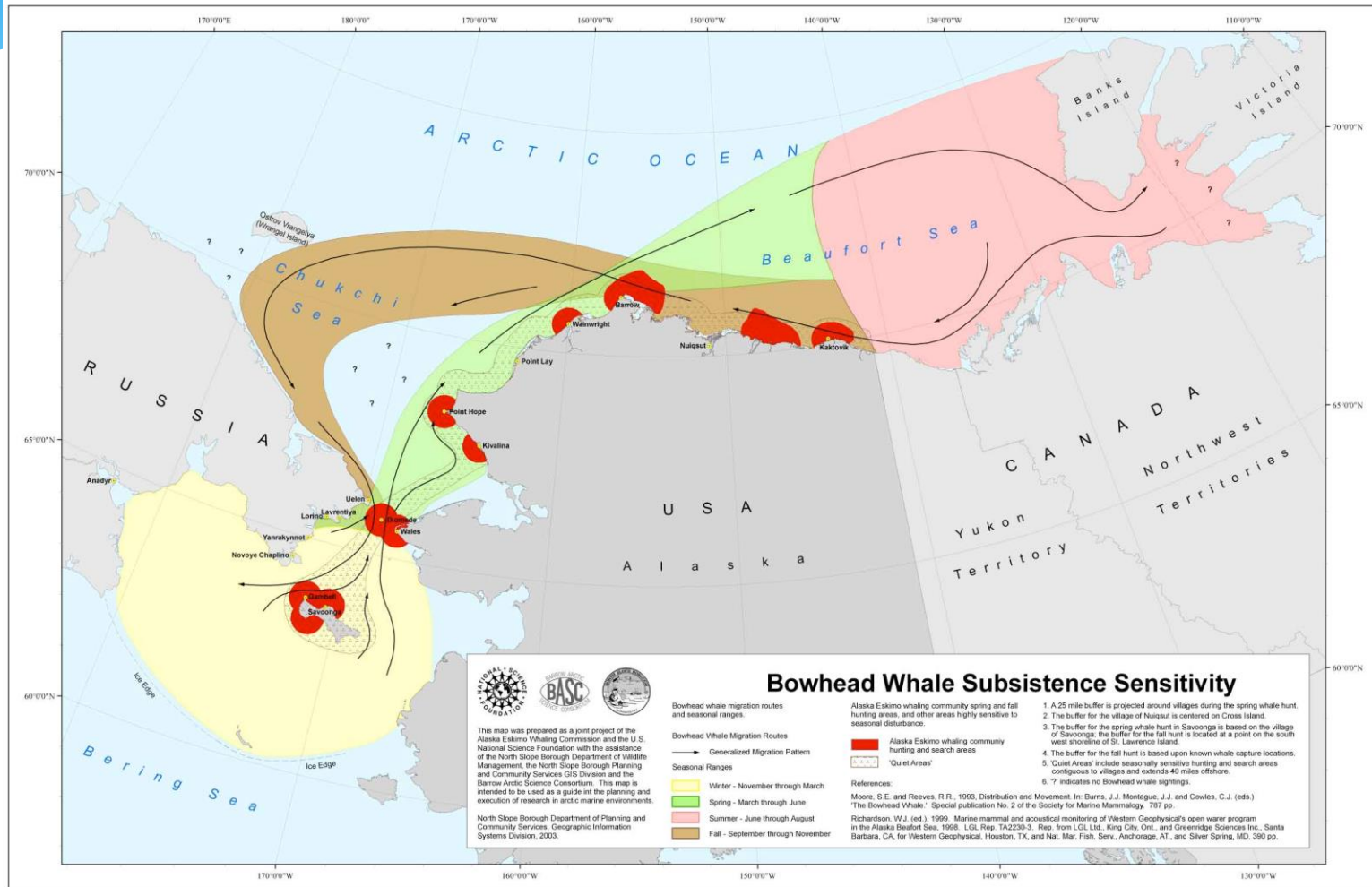
- \* Minimal Science Requirements
  - \* AICC less involved
- \* In Obtain Phase
- \* Released RFP
- \* Source Selection to Follow
- \* Award Expected in 2019

# Reducing Conflicts Between Research Cruises and Subsistence Activities

- \* Arctic Waterways Safety Committee (AWSC)
  - \* Co-management orgs., industry, and other groups
  - \* Bring users together to define best practices to ensure a safe and predictable operating environment
  - \* Standard of Care Document for Research Cruise Operations
- \* University of Alaska Fairbanks (UAF)
  - \* Community and Environmental Compliance Standard Operating Procedures (CECSOP) for R/V Sikuliaq research operations



# Head Whale Migration Routes and Seasonal Ranges



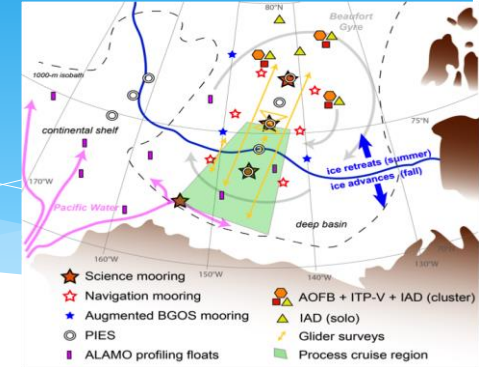
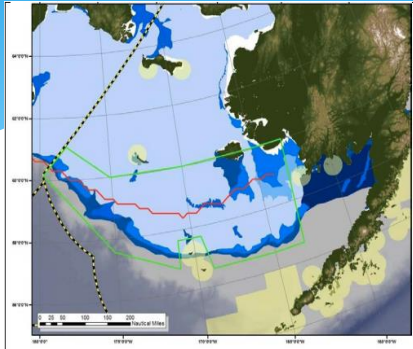
[http://icefloe.net/files/Bowhead\\_Whale\\_Subsistence\\_Sensitivity.jpg](http://icefloe.net/files/Bowhead_Whale_Subsistence_Sensitivity.jpg)

# Arctic R/V Matrix

Vessel Name	Dates North of Bearing Strait Demarcation Line	Dates North of Aleutians but South of Bearing Strait	Closest point of shore approach while in Chukchi Sea	Planned Arrival Date in Barrow	Planned Departure Dates from Barrow	Closest point of shore approach while in Beaufort Sea	Planned Arrival to Eastern Beaufort	Approximate Location for Research	Vessel Operator Contact	Research Contact
<b>R/V Sikuliaq</b>	Sept 2-28	N/A	tbd			60-80 nautical miles		1) Chukchi shelf break, 100nm west of Barrow, and 2) Central Beaufort Sea, near retreating ice edge.	Doug Baird, University of Alaska <ddbaird2@alaska.edu>	Jennifer MacKinnon <jmackinnon@ucsd.edu>
<a href="#">NOAA Oscar Dyson</a>	N/A	DEP Kodiak 03/30/18ARR Dutch 04/24/18	N/A	N/A	N/A	N/A	N/A	<a href="#">St Mathew Island and southern most ice edge.</a>	Chiefops.mop@noaa.gov, 541 867 8703	Ice Seal Ecology (DY-18-04)
<a href="#">NOAA Oscar Dyson</a>	N/A	DEP/ARR Dutch 04/29/18-05/10/18	N/A	N/A	N/A	N/A	N/A	<a href="#">Aleutians and Bering Sea 70m isobath near Pribilof Islands</a>	Chiefops.mop@noaa.gov, 541 867 8703	FOCI Spring Mooring (DY-18-05)
<a href="#">NOAA Oscar Dyson</a>	N/A	DEP/ARR Dutch 05/13/18-06/01/18	N/A	N/A	N/A	N/A	N/A	<a href="#">Bering Sea and Bristol Bay</a>	Chiefops.mop@noaa.gov, 541 867 8703	EMA-FOCI Larval Groundfish (DY-18-06)
<a href="#">NOAA Oscar Dyson</a>	N/A	DEP/ARR Dutch 06/06/18-08/15/18	N/A	N/A	N/A	N/A	N/A	<a href="#">Bering Sea and Bristol Bay, Shelf Break</a>	Chiefops.mop@noaa.gov, 541 867 8703	Walleye Pollock - Bering Sea Summer (DY-18-07 Legs 1-3)
<b>SIKULIAQ</b>	6/11/2018 - 6/21/2018 Dates subject to Weather	6/5 - 6/10, 6/21-6/24/2018 Dates subject to weather	68.3 N, 166.94 W and 67.603 N, 164.43 W			N/A		Bering Sea Shelf and Chukchi Sea Shelf	UAF, Marine Superintendent, Doug Baird, ddbaird2@alaska.com	UAF, Seth Danielson, sidanielson@alaska.edu
<b>SIKULIAQ</b>	N/A	6/27 - 7/03/2018	N/A			N/A		Slime Banks, Bering Sea	UAF, Marine Superintendent, Doug Baird,	BIUMD_CES, Hongsheng Bi, hbi@cbl.umces.edu
<a href="#">Oshoro Maru</a>	7/1-7/12	DEP/ARR Dutch 06/29/18-07/15/18	2miles, Point Hope, need to confirm	None	None	N/A	N/A	<a href="#">Bering Strait</a>	Hokkaido University, Faculty of Fisheries	hirawake@salmon.fish.hokudai.ac.jp, 81-138-40-8844
<a href="#">NOAA Oscar Dyson</a>	N/A	DEP/ARR Dutch 08/20/18-09/17/18	N/A	N/A	N/A	N/A	N/A	<a href="#">Bering Sea and Bristol Bay</a>	Chiefops.mop@noaa.gov, 541 867 8703	EMA-FOCI Larval Groundfish (DY-18-08 legs 1-2)
<b>R/V Sikuliaq</b>	August 3-26	August 27	30 miles			30 miles		Beaufort Shelf Break -149-153°W	Doug Baird (UAF: ddbaird2@alaska.edu)	Carin Ashjian (WHOI: cashjian@whoi.edu)
<a href="#">USCGC Healy</a>	OPSEC	OPSEC	3.5 miles, Point Hope	None	None	5 nm off Barrow Canyon, >20 nm for other inshore sampling	N/A	<a href="#">Bering, Chukchi and Beaufort seas</a>	David Forcucci, USCG, David.Forcucci@uscg.mil, 206-217-6648	DBO/NOAA funded, Bob Pickart, RPickart@whoi.edu, 508-289-2858
<a href="#">NOAA Oscar Dyson</a>	N/A	DEP Dutch ARR Kodiak 09/21/18-10/06/18	N/A	N/A	N/A	N/A	N/A	<a href="#">Aleutians and Bering Sea 70m isobath near Pribilof Islands</a>	Chiefops.mop@noaa.gov, 541 867 8703	Eco FOCI Fall Mooring (DY-18-09)
<b>NOAA Fairweather</b>	None	DEP Kodiak 06/25/18 Inports Nome July 7-9, 20-23, Aug 02-06, ARR Kodiak 08/27/18	N/A	N/A	N/A	N/A	N/A	Exact area TBD. Western Coast of AK. Near Nome.	Chiefops.mop@noaa.gov, 541 867 8703	Arctic Access / NW Alaska (FA-18-02 Leg 1-4)
<a href="#">USCGC Healy</a>	mid Sep	Mid Oct	40 nm	N/A	N/A	>40nm	N/A	> 40 nm North of coast. Along and into the ice edge	David Forcucci, USCG, David.Forcucci@uscg.mil, 206-217-6648	Navy SODA- Dr Craig Lee, Craig@apl.washington.edu, 206-685-7656
<a href="#">USCGC Healy</a>	Late October	Oct/Nov	5nm	N/A	N/A	5nm	>Nov 1	<a href="#">Chukchi and Beaufort Seas</a>	David Forcucci, USCG, David.Forcucci@uscg.mil, 206-217-6648	Mooring, NSF funded, Bob Pickart, RPickart@whoi.edu, 508-289-2858

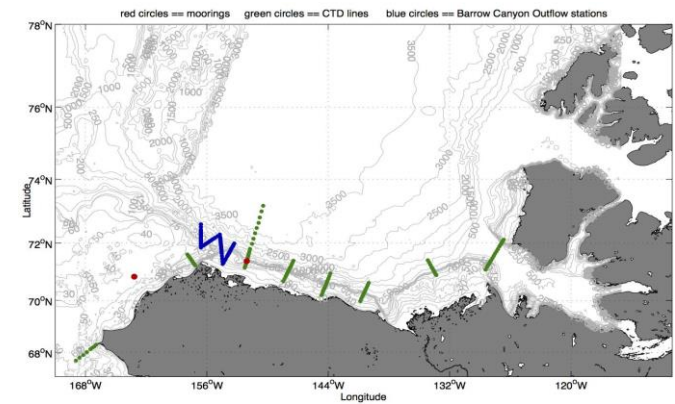
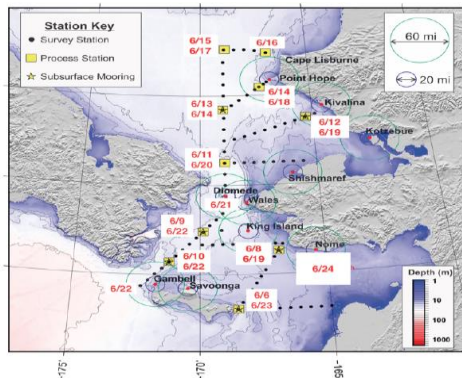
Compiled by Dave Forcucci  
Healy Marine Science Coordinator

# Arctic Research Cruise Matrix



Research Cruises  
Research Vessels  
Foreign Vessels  
USCGC Healy  
R/V Sikuliaq

2016	2017	2018
17	24	16
12	13	7
5	6	2
3	4	3
2	3	4



# USCGC Healy 2018 Schedule



Departs Seattle July 24, 2018;  
Returns Nov. 30, 2018

- \* HLY1801, Bering, Chukchi and Beaufort Seas, DBO/NOAA, Pickart
- \* HLY1802, Beaufort Sea, SODA/ONR, Lee
- \* HLY1803, Chukchi and Beaufort Seas, Mooring/NSF, Pickart

# R/V Sikuliaq 2018 Schedule



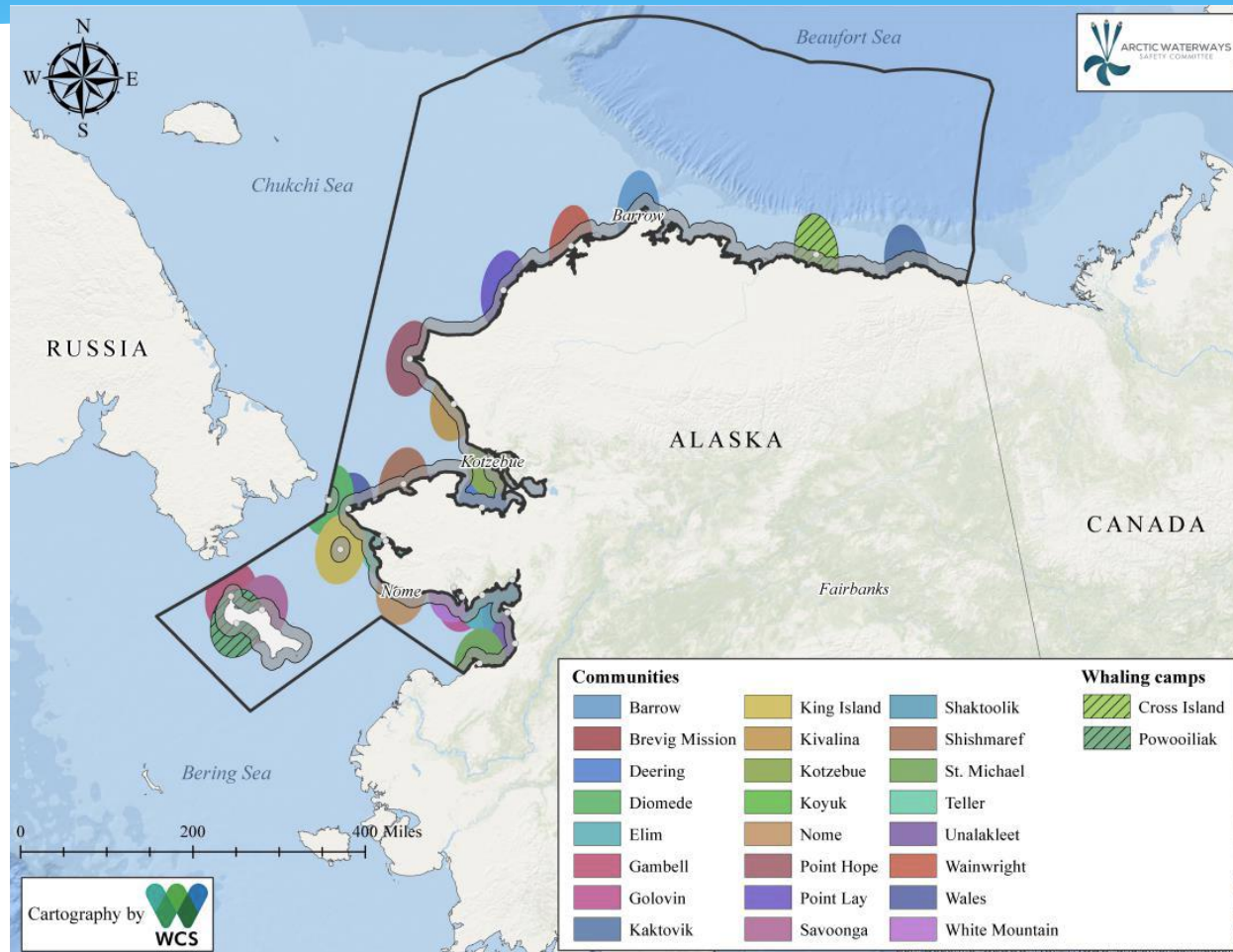
- \* 5 Jun/24 Jun, N. Bering/S. Chukchi, NSF/Danielson
- \* 27 Jun/03 Jul, Bering Sea, NSF/Bi
- \* 3 Aug/27 Aug, Beaufort, NSF/Ashjian
- \* 2 Sep/28 Sep, Chukchi/Beaufort Seas, MacKinnon

# Future Activities

- \* AICC Winter Meeting, January 23 & 24, 2018, US Coast Guard Facility, Seattle, WA
- \* Debrief Healy 2018 Cruises



# Community and Subsistence Activity Locations



Arctic Waterways Safety Committee (AWSC) Standards of Care (SOC) for Research Cruise Operations (Draft 22 Feb 2017 version)