

**UNOLS RVOC**

**NSF Ship Operations  
Overview of CY 17 & 18**

**April 2018**

**Rose Dufour**

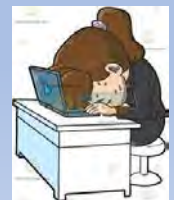


# FY 18 – Budget Battles

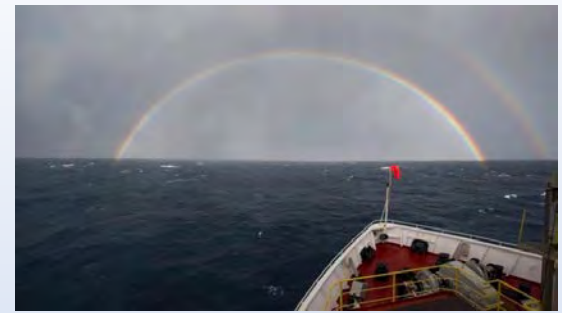


- Three CRs
- Two government shut downs
- Waiting for appropriation to Ship Ops Account to fully fund CY 18 operations
- So far, obligated \$17M before 23 March. Next round of obligations will amount to ~\$34M, with next critical date set for 11 July.
- Approximately \$7.3 in carry forward funds
- Total OCE CY 18 expenses, ~\$58.3M (does not include NSF OOI, or Polar Programs).
- Total NSF Ship Time expenses is ~\$64.5M

*(does not include tech submersible support, or other related Ship Support programs)*



## NSF Budget Update



For the National Science Foundation (NSF) the spending bill provides a total of \$7.8 billion which is \$295 million or 4% over the FY17 level. For Research and Related Activities, the bill provides \$6.3 billion which represents a 5% increase over FY17. *(The difference between \$7.8 billion and \$6.3 billion is the administrative costs for the agency, such as panels, travel, salaries, overhead).*

- The Major Research Equipment and Facilities Construction account is funded at \$182.8 million which is equal to the request and the Senate's recommendation and includes funding for 3 Regional Class Research Vessels. The Education and Human Resources account is funded at \$902 million, a 2.5% increase over FY17. Funding is provided for basic research across scientific disciplines to support the development of effective Science, Technology, Engineering, and Mathematics [STEM] programs; \$105 million is provided for the continued design and construction of three Regional Class Research Vessels (RCRV); \$171 million is provided for the Established Program to Stimulate Competitive Research (EPSCoR), \$11 million above the FY2017 enacted level and \$71 million above the request. The report accompanying the bill includes language reiterating support for existing NSF research infrastructure, including land and sea-based assets.

# The Congressional FY 18 Spending Bill cont.

- The accompanying statement to the bill includes the following language with respect to marine seismology, “The agreement reiterates the importance of ensuring that NSF-funded marine research vessels with unique seismic capabilities remain available to the academic marine geology and geophysics community to support a variety of important undersea research efforts.”

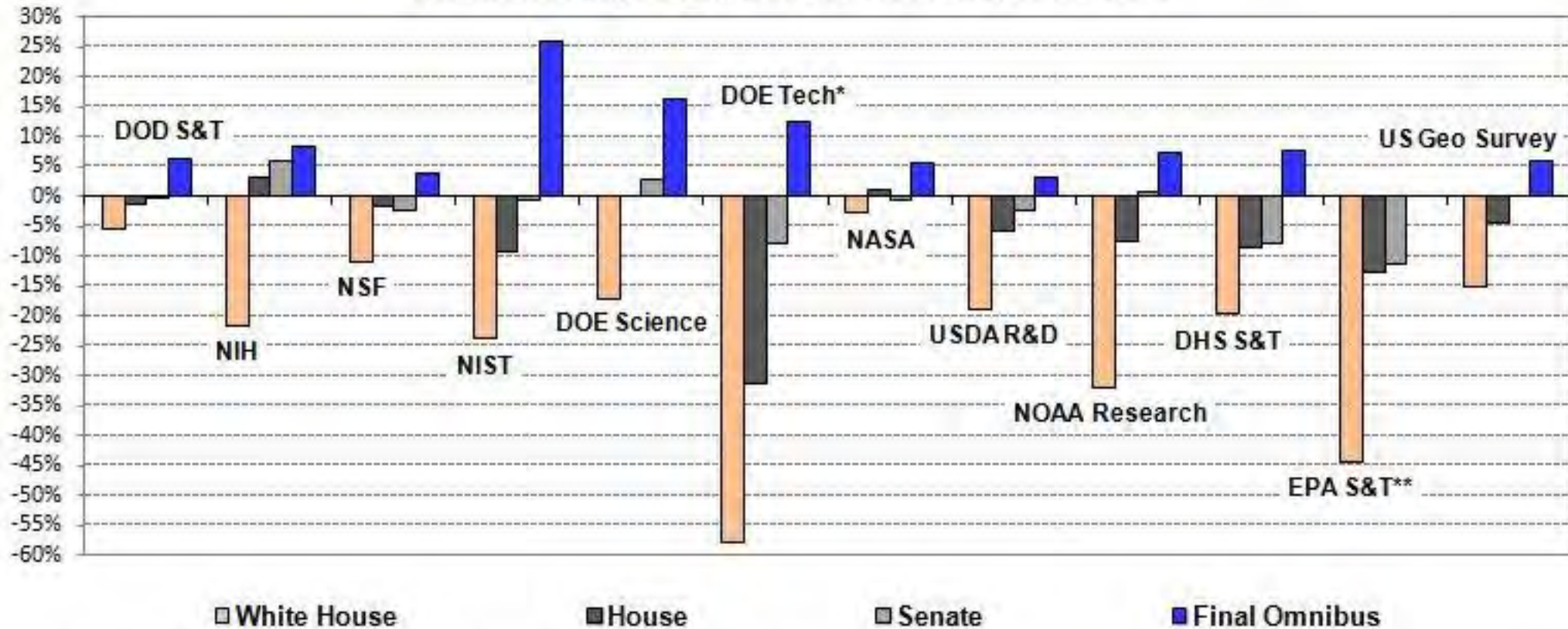
## NSF TPs

- The appropriation is for FY18, and as described in the DCL (<https://www.nsf.gov/pubs/2018/nsf18061/nsf18061.jsp>), R/V *Langseth* will indeed be operational in FY18, and even well into FY20.
- The language refers to “NSF-funded marine research vessels”. Through the transition out to 2020, OCE will continue to fund seismic research on research vessels (both “unique” and not) as announced in the DCL.

## FY18 Omnibus Includes Spending Increases for Key Science Agencies and Their Programs

### Current Appropriations for Select Science & Tech Agencies

*Estimated percentage change from FY 2017 enacted levels, nominal dollars*



\*Includes renewables, efficiency, nuclear, fossil, grid, ARPA-E. \*\*Flat in omnibus. | AAAS

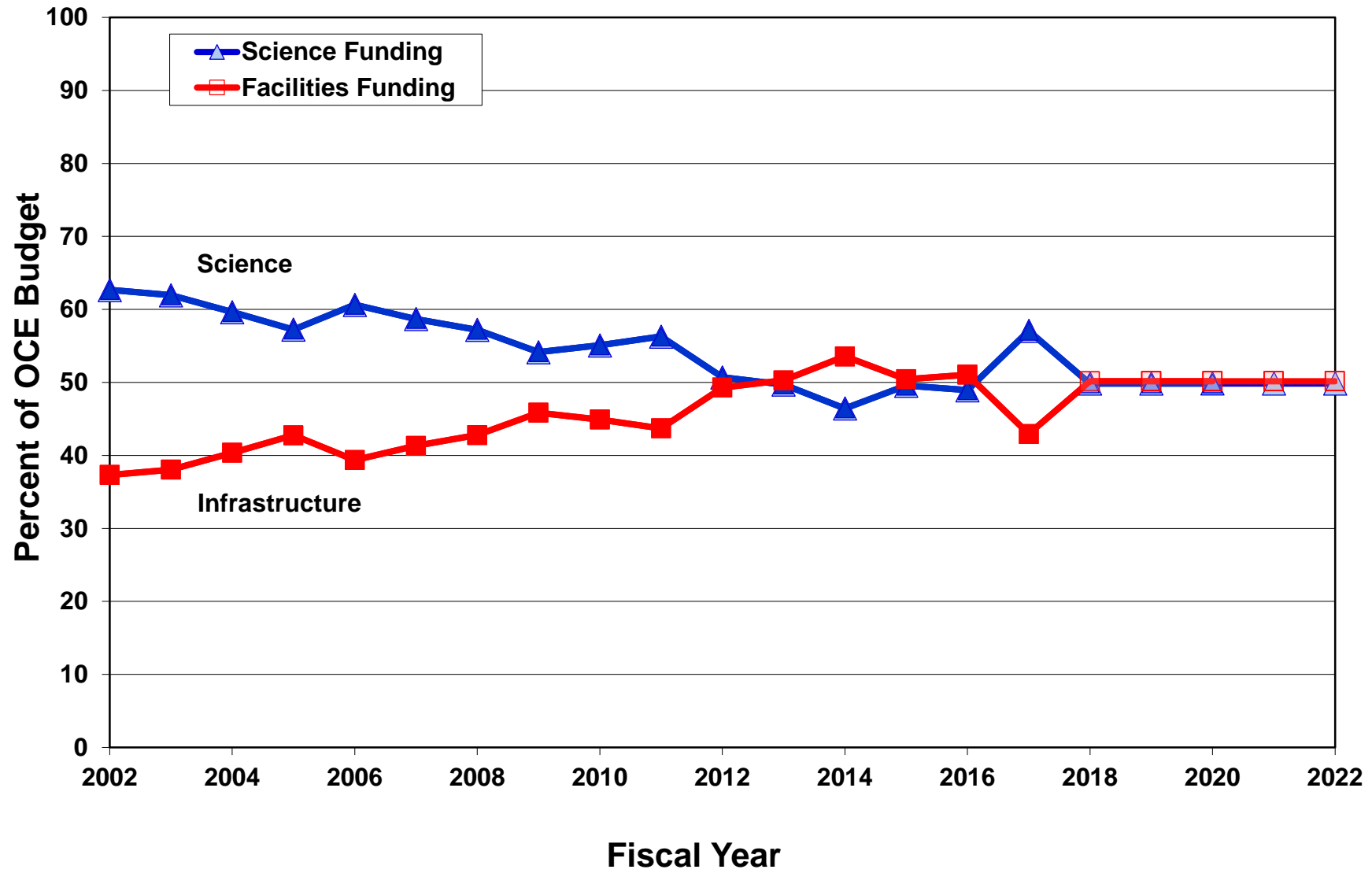
# American Innovation and Competitiveness Act (AICA):

- **Overview of the NSF Response**
- Enacted into law on January 6, 2017.
- A bipartisan agreement that maximizes research and education opportunities and innovation opportunities to fuel the U.S. economy.
- Primarily impacts NSF, with some impact on NIST, NASA, and OSTP.
- Affirms and enhances NSF's management and operation.
- §110 –Oversight of NSF Major Multi-User Research Facility Projects. Strengthens oversight and accountability over the *full life-cycle*
- Ensuring Life-Cycle Oversight: Primary Actions Formed Facilities Governance Board
- Reset Major Facilities Working Group of Accountable Program Officials
- Reset MREFC panel as Large Facilities Development Panel
- Engaging in NSB facilities O&M study
- Budget, branding, mid-scale, collaborations, spectrum
  
- <https://www.congress.gov/bill/114th-congress/senate-bill/3084>

## In progress: NSF

- Concluded Ship Operations External Panels
- Working with NSF CAPS to meet the reviews for CA's over \$10M.
- Working with Large Facilities on Ship's within the Large Facility portfolio to be compliant with AICA.
- Negotiations on Cooperative Agreements
- Annual Report negotiations
- Next steps with Marine Seismic
- 5-year External Review of IPS in Early June (Committee of Visitors)
- Civility at Sea Video, module 1 – awaiting release.

# OCE Percentage of Science vs Facilities Funding (2018)







# Major Overhaul Stabilization Account

*(Major does not does not stand for mid-life Refits)*

- Good News ! Not much as really changed
- Bad News ! Pay attention to the reporting requirements.

<https://extsharepoint.nsf.gov/geo/oce/MOSArate/layouts/15/start.aspx#/SitePages/Home.aspx>

- Reporting Requirements: In addition to rate formulations, operators will need to provide:
- A cumulative reconciled balance of each MOSA account *per the financial records* (Beg balance + MOSA funding – actual costs = ending balance);
- Copies of pre-shipyard approvals to spend MOSA;
- The periodic shipyard reports;
- Report of the past year's MOSA expenditures (actual costs) that is tied to individual approvals;
- The MOSA cycle plan included in the annual reports; and,
- The final report.



**Academic Research Fleet CY 18**  
**TOTAL Costs \$102,334,824**  
**63% of ARF Support**



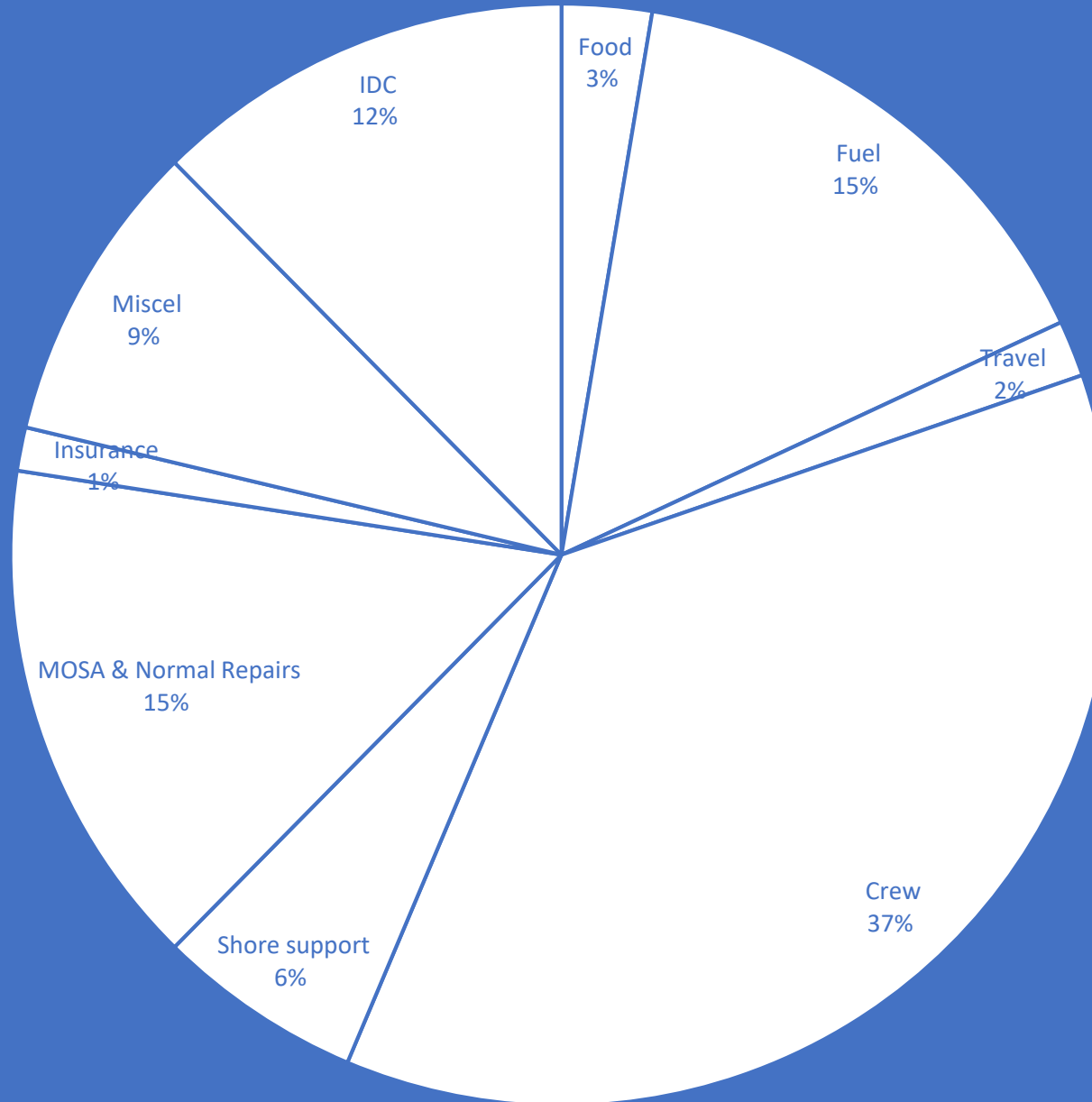
**Academic Research Fleet CY 18**  
**Total Days 3,197**  
**60% of days on the ARF**



■ NSF Days ■ Other Days

ALL SHIPS - % OF COSTS CY 17\*  
DAY RATE RECOVERY

\*\$90,006,165



Food	\$ 2,376,488
Fuel	\$ 13,885,952
Travel	\$ 1,481,565
Crew Salaries	\$ 32,975,508
Shore Support	\$ 5,437,607
MOSA and Repairs	\$ 13,547,727
Insurance	\$ 1,147,046
Miscel	\$ 8,001,213
IDC	\$ 11,153,055

## Home Port Loading/unloading

§200.468 Specialized service facilities.

(a) The costs of services provided by highly complex or specialized facilities operated by the non-Federal entity, such as computing facilities, wind tunnels, and reactors are allowable, provided the charges for the services meet the conditions of either paragraphs (b) or (c) of this section, and, in addition, take into account any items of income or Federal financing that qualify as applicable credits under §200.406 Applicable credits.

(b) The costs of such services, when material, must be charged directly to applicable awards based on actual usage of the services on the basis of a schedule of rates or established methodology that:

(1) Does not discriminate between activities under Federal awards and other activities of the non-Federal entity, including usage by the non-Federal entity for internal purposes, and

# NSF Branding Efforts

- Many noticed the language in the updated CAs calling out logos and Flags, and other media coverage.

*NSF requires that vessels owned by the National Science Foundation display appropriate and approved logos and/or flags on the vessel at all times. Vessels owned by other Federal agencies or by operating institutions are also required to display appropriate/approved NSF flag during voyages funded by the NSF, unless otherwise advised. Other branding requirements or changes will be updated by NSF, and will amend this cooperative agreement accordingly. Additionally, it is incumbent on the awardee to ensure any NSF work on the vessel that results in media coverage, blogs, twitter, etc, must include appropriate credit back to NSF.*

@NSF\_GEO and #NSFfunded on their social media efforts for NSF-supported work

We work closely with our ONR partner.



ONR



My flag's bigger than your flag! Nah, nah! 😜

That was not lost on me when your partner in crime sent me a photo... I'm plotting my revenge 🤔



Text Message



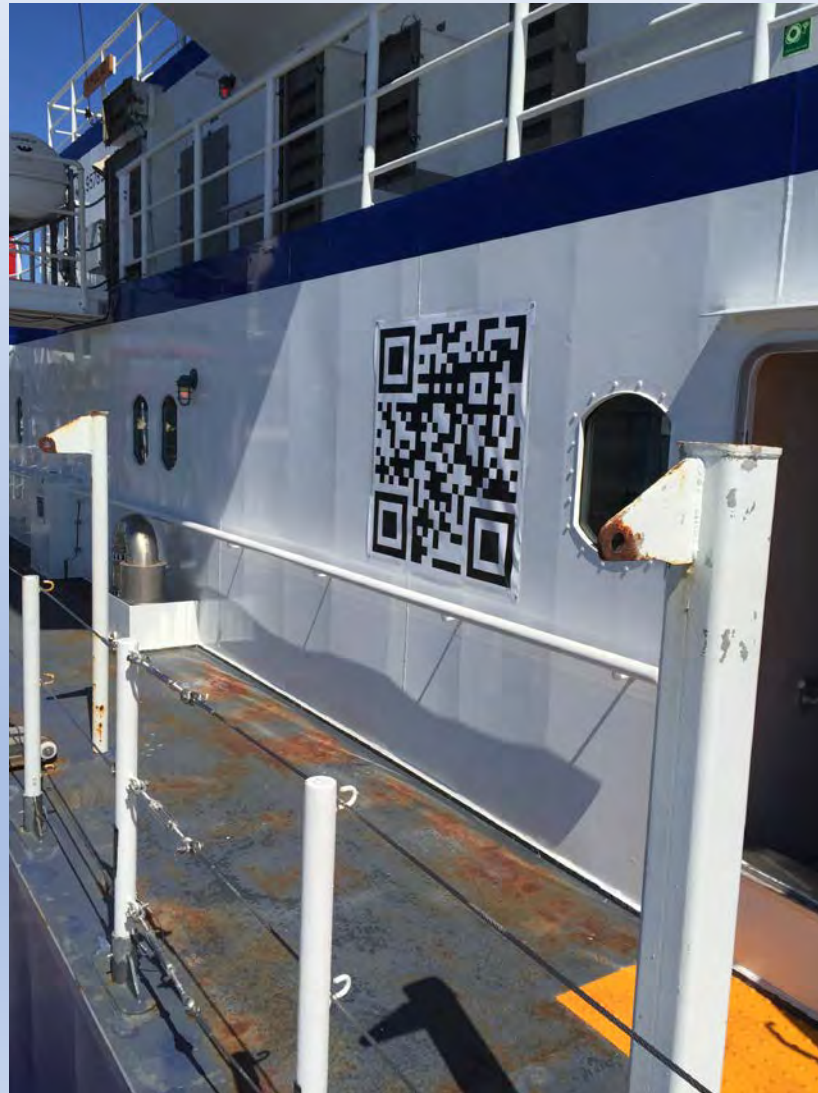


NSF

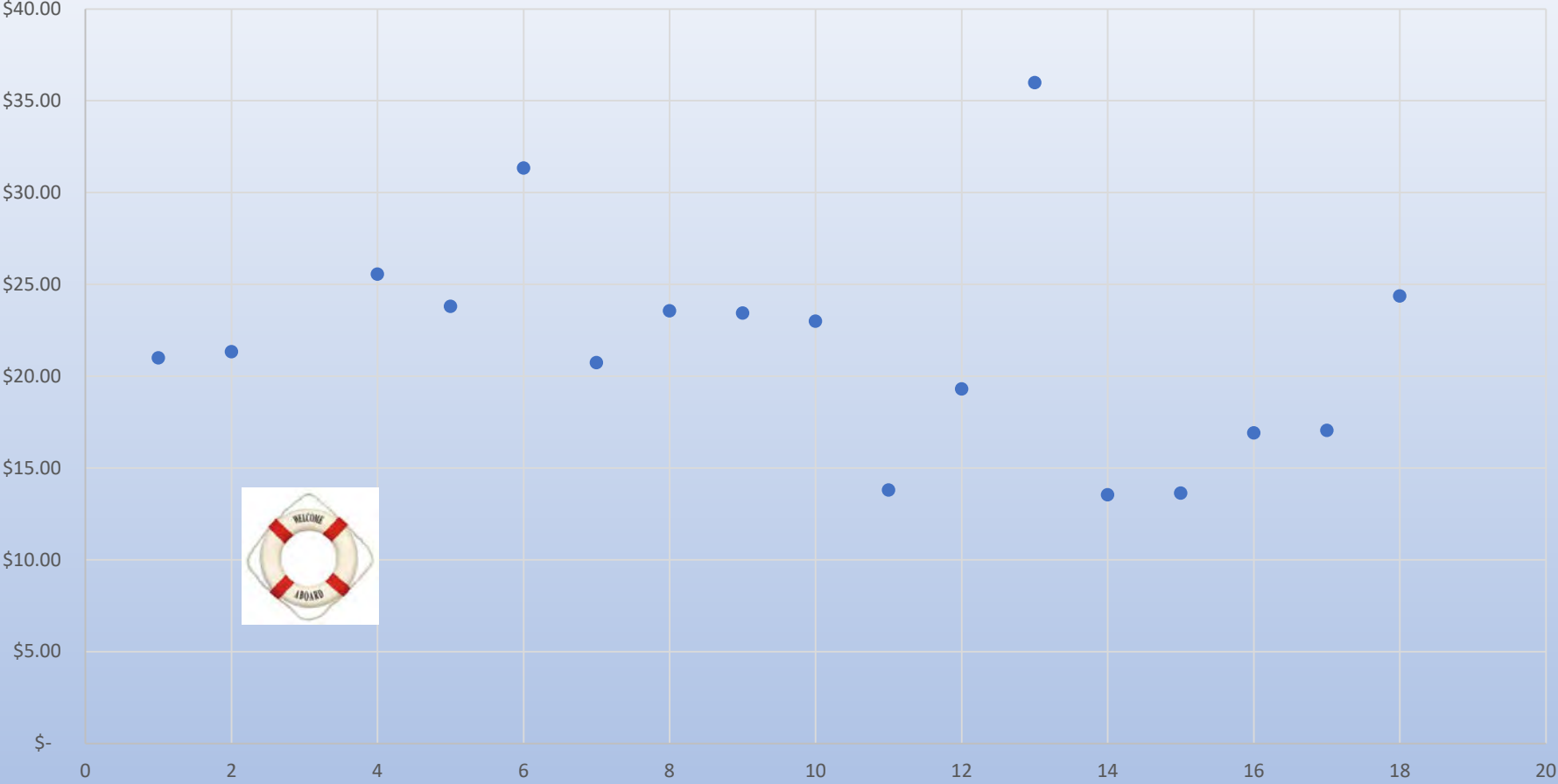




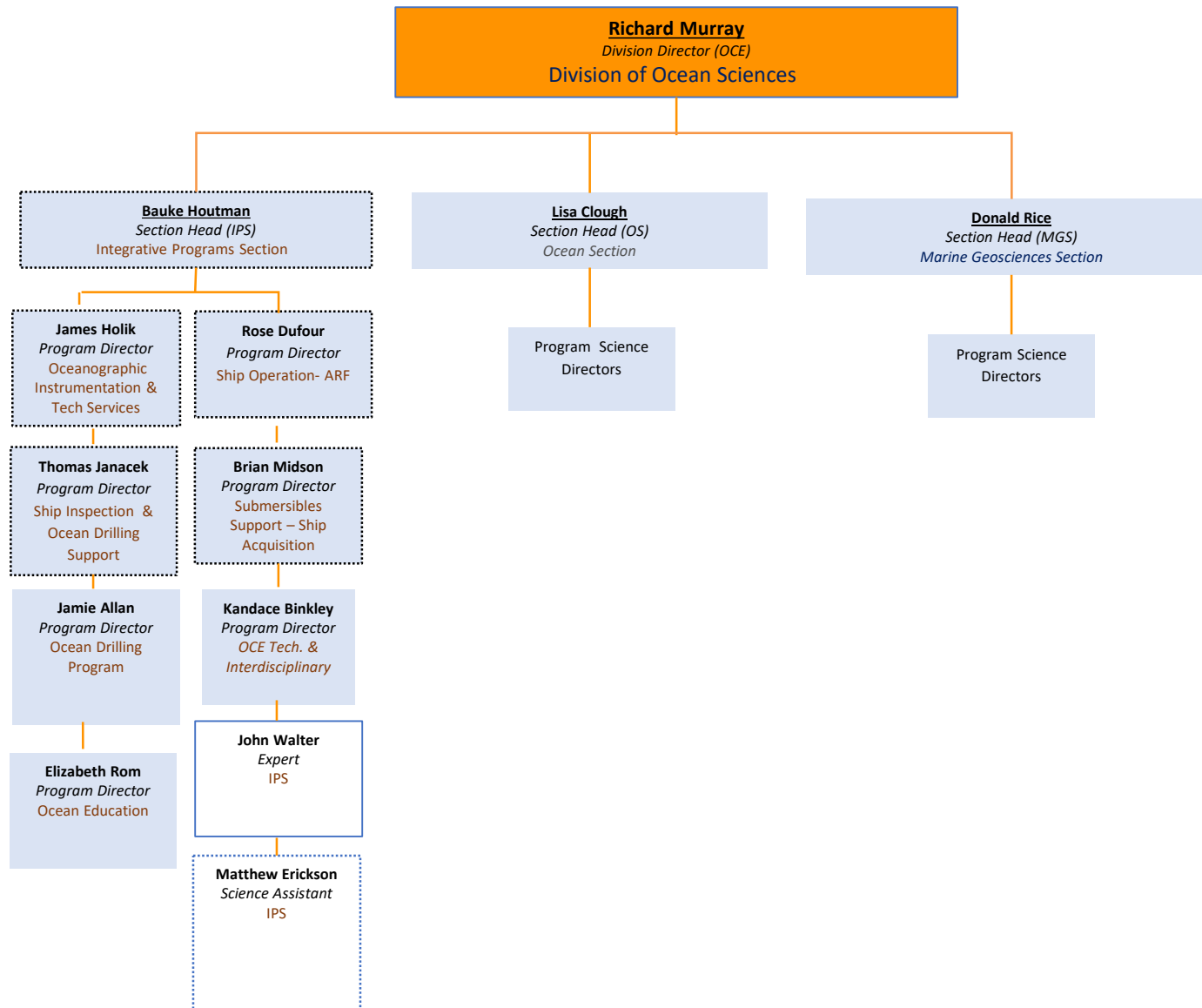
# Example of a QR



Food Costs per person per day







- Blue: Permanent Staff
- White: Temporary Staff
- Orange: IPA Staff
- Dash: ARF