



University-National Oceanographic Laboratory System ~UNOLS~

Deep Submergence Science Committee Meeting
Woods Hole, MA
June 6-7, 2017





UNOLS Fleet News – Design, UNOLS Designations, Mid-life Refit activities

- **Two new Ocean Class Ships:**
 - R/V *Neil Armstrong* (WHOI) and R/V *Sally R* 2016
- **Mid-Life Refits/SLEPs:**
 - R/V *Thompson* is in its mid-life
 - Shakedown cruise late Oct/early Nov 2017
 - Return to science late 2017
 - Planning for 2018 mid-life of *Revelle* is underway.
 - Atlantis mid-life funding is in budget.
- **Regional Class Research Vessels**
 - Three RCRVs planned.
 - First ship could enter service in 2021



Bad old stuff – piping & wires

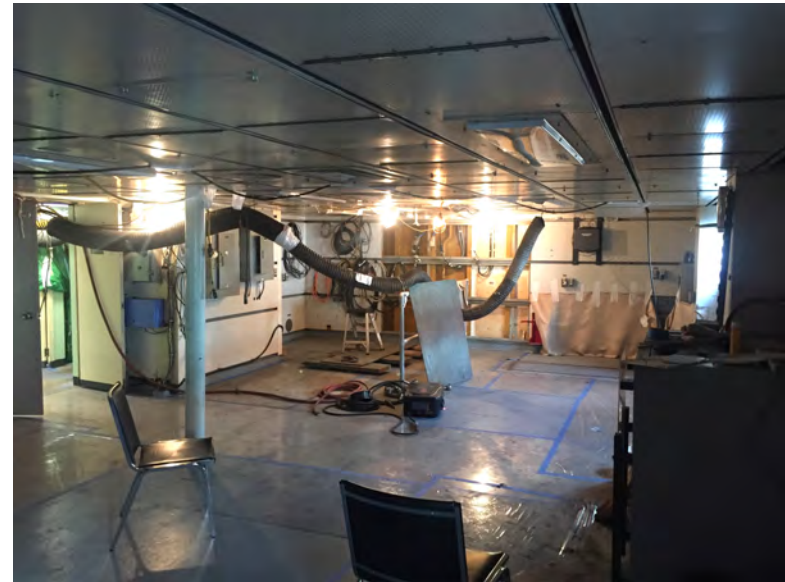


5/31/17

UNOLS FIC Summer 2017



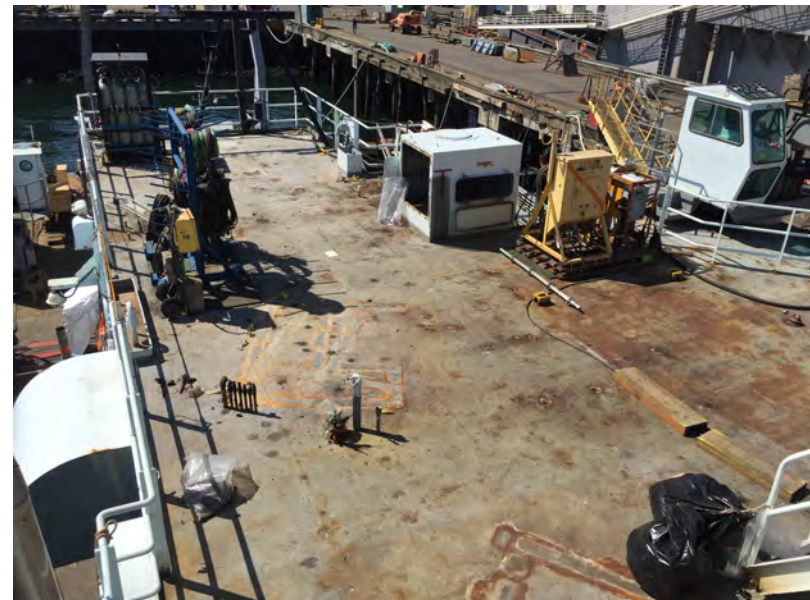
Badly corroded vent ducting



Computer Lab gutted



Senior Scientist S/R



Heavily corroded 02 Deck



Refurbished hydro-winch in place



Cables prepared for feeding into switchboards



Cable connections in new generator



New piping systems



Science Mission Requirements for Global Ships

- **Science Mission Requirements for Global Ships –**
Works continues on the development of Global SMRs. Committee members include Greg Cutter (Chair), Byron Blomquist, Clare Reimers, Jim Swift.
 - Define science drivers and gather data
 - Draft SMR document.
 - Hold Town Hall Meetings at AGU and Ocean Sciences



Video Project: Promoting a Positive Work Environment

- The video project is a collaborative effort between NSF, ONR, NOAA, and UNOLS
- The video project will be composed of three modules
 - Module 1 (~ 12 minutes) – General video on Promoting a Positive Work Environment – applicable to all research fleets.
 - NOAA is supporting the production of this
 - Provides information about how to promote a positive work place:
 - Explains appropriate behavior.
 - Provides Scenarios
 - Module 2 (~ 12 minutes) – Fleet-Specific Video
 - This video would provide the information that applies to all UNOLS ships.
 - Issues/information/practices that apply to the entire fleet
 - Expand, as needed, on the scenarios that were provided in Module 1

Status:

- Maritime Training Services (MTS) has been contracted to produce modules 1 and 2.
- Filming will be from ships in and stopping in Seattle and Newport, OR. (MTS is located in Seattle)
- *Sikuliaq* offered the first filming opportunity in mid-May
- The outline and script drafts will be vetted by the agency reps and the UNOLS Special Committee
- Timeline – We hope to have the video available by the end of the Summer/early Fall
- We will own the videos and they can be shared openly (e.g. YouTube)



Video Project: Promoting a Positive Work Environment

- Module 3 – Ship specific information. This module will be in the form of posters or PPTs.
 - This format allows easy and more frequent updates.
 - Some ships already have this information available.
 - There will be a UNOLS webpage with links to each institution's document. We prefer that the original poster/PPT resides on the home institution so that they can update as needed.
 - The document should also be readily available on the ship.
 - The special committee has been asked to provide a template of minimum information that is needed for the posters/PPT
 - Once the template is available, Alice Doyle will contact each ship operators to start collecting the material.
- This posters/PPTs can be linked to the UNOLS webpage they becomes available.

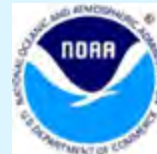
-
- **UNOLS Special Committee on Medical Questions/Medical History Form/Pregnancy/Harassment:** Clare Reimers/OSU, Bruce Appelgate/SIO, Debbie Steinberg/VIMS, Scott Ferguson/UH, Chris Measures/UH, Brandi Murphy/UW, Mark Brzezinski/UCSB



University-National Oceanographic Laboratory System

~UNOLS~

UNOLS Outreach and Early Career Investigator Initiatives June 1, 2017





UNOLS & STEM-SEAS

- **Leadership Team**

- Sharon Cooper/LDEO
- Jon Lewis/Indiana University of Pennsylvania

- **2016 Successes**

- STEM-SEAS Program- (3) expeditions in 2016 on *Oceanus* in May, *Endeavor* in July, and *Sikuliaq* in August.

- **2017 Plans**

- PI has been informed this will be funded again in 2017. (mid summer)
- Plans underway for program on R/V Hugh Sharp- July 25, 2017 to August 1, 2017 from Panama City to Lewes DE. Funded by ONR.
- UNOLS working with PI's and marine superintendents to identify other potential transits.



Cruise Opportunity Webpage and Application

The screenshot shows the homepage of the UNOLS Cruise Opportunity Program. The header includes the UNOLS logo and navigation links: ABOUT, SHIPS/FACILITIES, SCHEDULES, COMMITTEES, MEETINGS, FORMS & DOCUMENTS, and OUTREACH & JOBS. Below the header is a blue banner with the text "UNOLS CRUISE OPPORTUNITY PROGRAM". The main content area features a large image of a ship at sea, with the text "photo by Uriel Zajackovsky, UCSD" in the bottom left corner. To the right of the image is a section titled "FEATURED INFORMATION" which states: "The UNOLS Cruise Opportunity Program matches volunteer graduate students with research cruises aboard UNOLS vessels." Below this is a "Welcome to the UNOLS Cruise Opportunity Program Webpage!" section. It explains the primary goal of the program: to provide graduate students currently completing a degree in a field of oceanographic research with the opportunity to participate in a research cruise. It also mentions that the participant will be a member of the scientific party and be involved in data collection and all other activities at sea. It is envisioned that the graduate student will be familiar with the science to be conducted at sea, and thus, form new collaborations and potentially develop new research directions. To be eligible to participate in this program, the graduate student must currently be studying at a U.S.-based institution and have either a U.S. Passport or a U.S. Work Visa. Below this, it says: "To apply, please review the opportunities listed below and if you would like to apply for one, fill out an application form by the deadline listed." and "We are sorry, but there are currently no cruise opportunities at this time, please check back soon!"

<https://www.unols.org/unols-cruise-opportunity-program>

The screenshot shows the "UNOLS CRUISE OPPORTUNITY APPLICATION" form. The header includes the UNOLS logo and navigation links: ABOUT, SHIPS/FACILITIES, SCHEDULES, COMMITTEES, MEETINGS, FORMS & DOCUMENTS, and OUTREACH & JOBS. Below the header is a blue banner with the text "UNOLS CRUISE OPPORTUNITY APPLICATION". The main content area contains the following text: "The primary goal of the UNOLS Cruise Opportunity Program is to provide graduate students currently completing a degree in a field of oceanographic research with the opportunity to participate in a research cruise. The participant will be a member of the scientific party and be involved in data collection and all other activities at sea. It is envisioned that the graduate student will be familiar with the science to be conducted at sea, and thus, form new collaborations and potentially develop new research directions. To be eligible to participate in this program, the graduate student must currently be studying at a U.S.-based institution and have either a U.S. Passport or a U.S. Work Visa." Below this is a section titled "To apply for the UNOLS Cruise Opportunity Program, please follow the instructions below. It is important that you refer to the UNOLS Cruise Opportunity Page before applying to determine which (if any) of the cruises are aligned with your field of study. At this time we cannot cover the cost of traveling to and from the ship, but there will be no other costs associated with participating on the cruise." Below this are three bullet points: "Complete and submit the following application form.", "Submit a .pdf of your Curriculum Vitae with this application form. An applicant's C.V. should include educational history (degrees and dates awarded), employment experience (including any internships), and any authored or co-authored journal articles, abstracts, or other publications related to the research objectives of the cruise.", and "Submit a .pdf copy of a Faculty Advisor Recommendation. Applicants must include a letter from their primary advisor. The letter should document the student's scientific experience and detail how participation on the cruise would fit into their graduate degree program." Below the instructions are several input fields: "Applicant Name *", "Current Position *", "Institution *", "Department *", "Address Line 1 *", "Address Line 2 *", and "City *".

<https://www.unols.org/form/unols-cruise-opportunity-application>



UNOLS Cruise Opportunities

- **2016**

- Cruise Opportunities Posted = **1**
- Number of Applicants: **1**
- Number of people who signed up to receive Cruise Opportunity notifications via email: **220**

- **Potential Issues:**

- No travel funding provided
- Marketing
- Available Cruises



<https://www.unols.org/unols-cruise-opportunity-program>



UNOLS Cruise Opportunities: 2017

- Cruise opportunity posted = 1
- Number of people who signed up to receive Cruise Opportunity notifications via email: **341**

Cruise Title	The transition from rifting to seafloor spreading at the western tip of the Cocos-Nazca Rift
Cruise Dates	May 1 – 30, 2018 (estimate)
Ship Name	R/V Revelle
Chief Scientist	Emily Klein, Duke & Hans Schouten, WHOI
Start Port/End Port	Manzanillo, Mexico to San Diego, USA (subject to change)
Cruise Description	Geophysical mapping and sampling of the western end of the Cocos-Nazca spreading center in the eastern Pacific Ocean. We will collect multibeam bathymetry, magnetic, and gravity data, and perform ~60 rock dredges.
No. Bunks Available	2-5
Application Deadline	December 1, 2017



Chief Scientist Training Workshops

2011 through 2015 - 11 cruises on seven different vessels:

- *Wecoma, New Horizon, Endeavor, Atlantic Explorer, Blue Heron, Point Sur, Hugh Sharp*

2016 – 7 cruises:

- *R/V Thomas G. Thompson* - February 11-20,
- *R/V Atlantis* with *Alvin*, *Sentry*, and Telepresence – July 26-Aug 8
- *R/V Blue Heron* - Doug Ricketts/UMN (Summer) – 4 cruises, June 12 – July 2
- *R/V Sikuliaq* Transit Cruise – December 2-17, 2016





Future Chief Scientist Training Workshops: 2017 Plans

- **R/V *Revelle*** - Early Career Seismic Chief Scientist Training Cruise
 - PIs: Masako Tominaga (TAMU), Anne Trehu and Mitch Lyle (OSU), and Greg Mountain (Rutgers)
 - Information Webinars:
 - Monday 4/10: *"How to develop science hypotheses and address them with marine seismics"*
 - Tuesday 4/11: *"How to develop marine seismic proposals"*
 - Wednesday 4/12: *"How to develop a marine seismic acquisition plan"*
 - Cruise Dates: September 26 – October 2, 2017
 - <https://www.unols.org/news/early-career-updates/now-accepting-applications-2017-marine-seismic-chief-scientist-workshop>
- **R/V *Blue Heron*** - Doug Ricketts/UMN
 - Great Lakes Chief Scientist Training Cruises.
 - The program will occur from June 8 – 11





Chief Scientist Training Workshops Statistics

Tracking the Participants:

- 170 Participants in CSTW over 6 years (2011 – 2016)
- 54 Participants submitted a total of 316 STRS Requests (*147 as PI, 169 as Co-PI*)
- 59 Requests funded = 19% (15 to PIs and 44 to CoPIs)





Thank you!