

DeSSC report June 01, 2017 UNOLS Council Meeting

- DeSSC membership update
- NDSF vehicle updates
- Other activities



DeSSC membership

Current members

Craig Dawe (*MBARI*)

Amanda Demopoulos (*USGS*) – approve second term?

Dave Emerson (*Bigelow*)

Brian Glazer (*Univ. Hawaii*)

Nick Hayman (*UTIG*)

Laura Lapham (*Univ. Maryland*)

Anna-Louise Reysenbach, Chair
(*Portland State U*)

Cindy Van Dover (*Duke*)

Scott White (*Univ, SC*)

Peter Girguis, (*ex-officio, Harvard*)

Rob Munier (*ex-officio, WHOI*)

Tim Shank (*ex-officio, WHOI*)

Adam Soule (*ex-officio, WHOI*)

Changes to Terms of Reference- Vice Chair

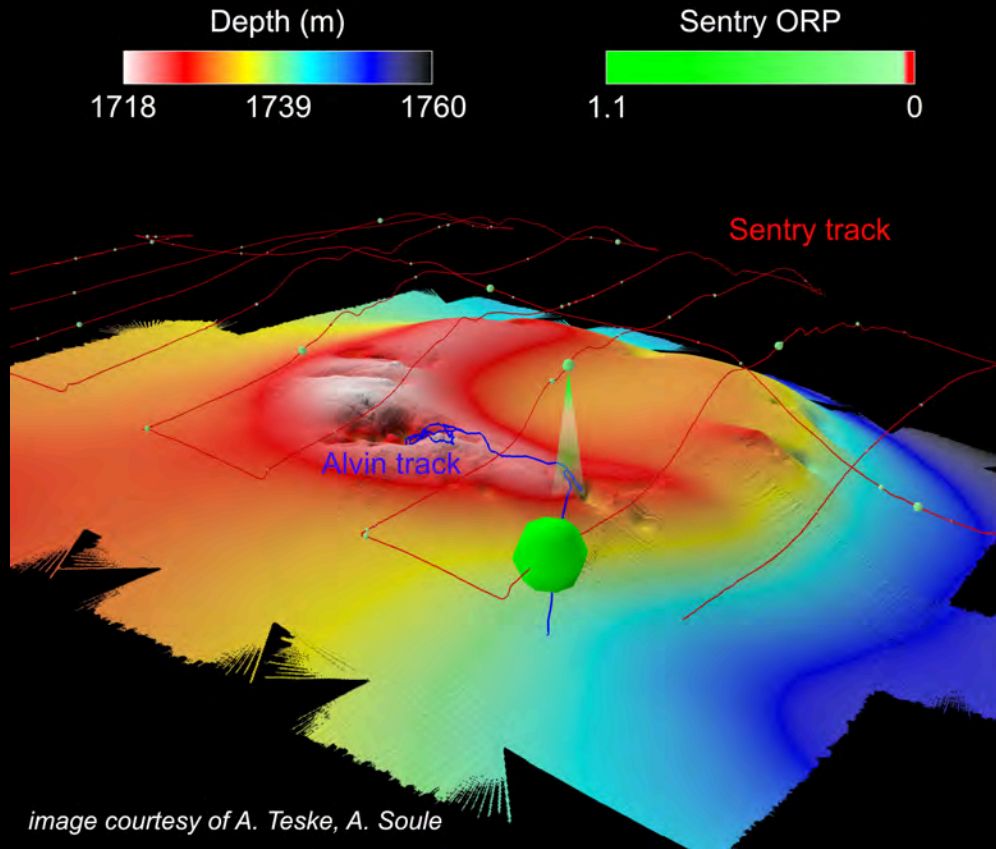
DeSSC News & Accomplishments- since December

- New Expedition Leader for the Alvin group: Todd Litke
- Users 😊 , but... still concerns regarding utilization rates

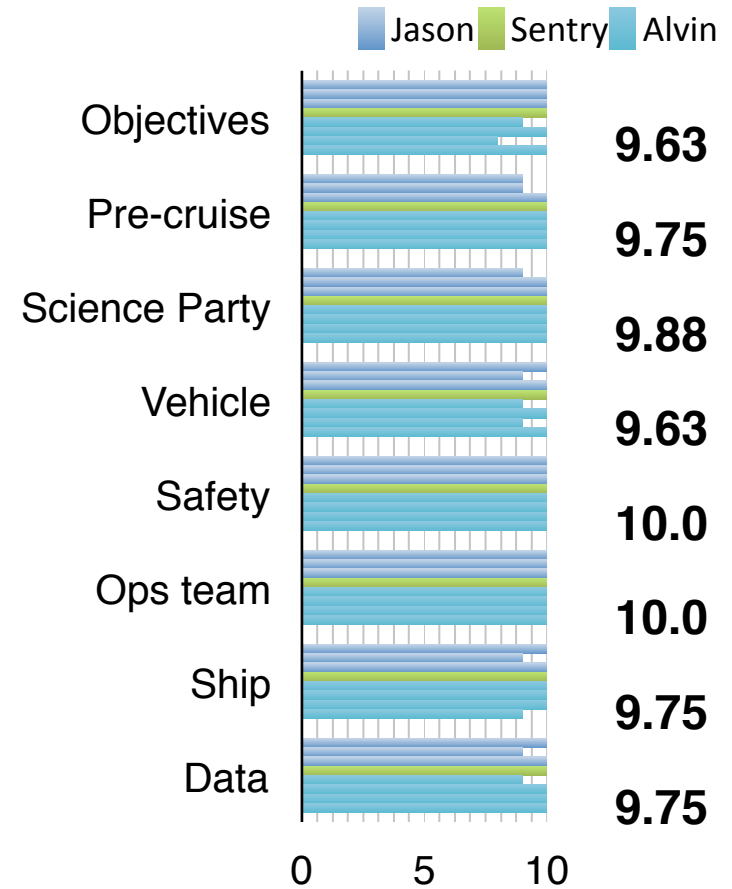
Vehicle	2016	2017	2018
Alvin	127	87	81 (42 pending)
Jason	117	127	73 (222 pending)
Sentry	139	132	120 (6 pending)

- Two telepresence studies (DeSSC:Science, WHOI:Tele-engineering/operations), DeSSC next week
- Coordinating US- InterRidge
- Active New-Users programs, onshore 'bootcamp', chief sci training cruise, DeSSC New-User Program at AGU
- DESCEND-2 report

Vehicle use profile and community feedback



NDSF PCARs



Thank-you

