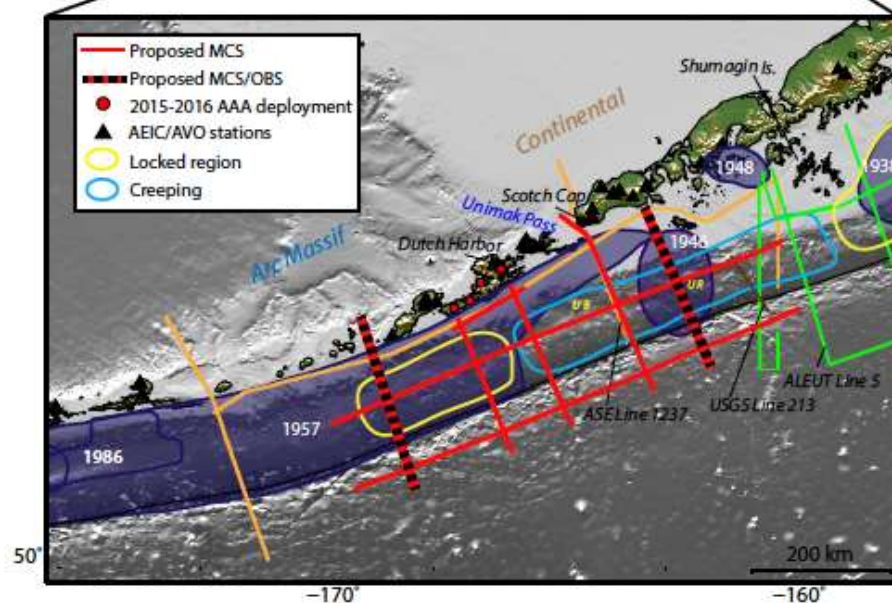
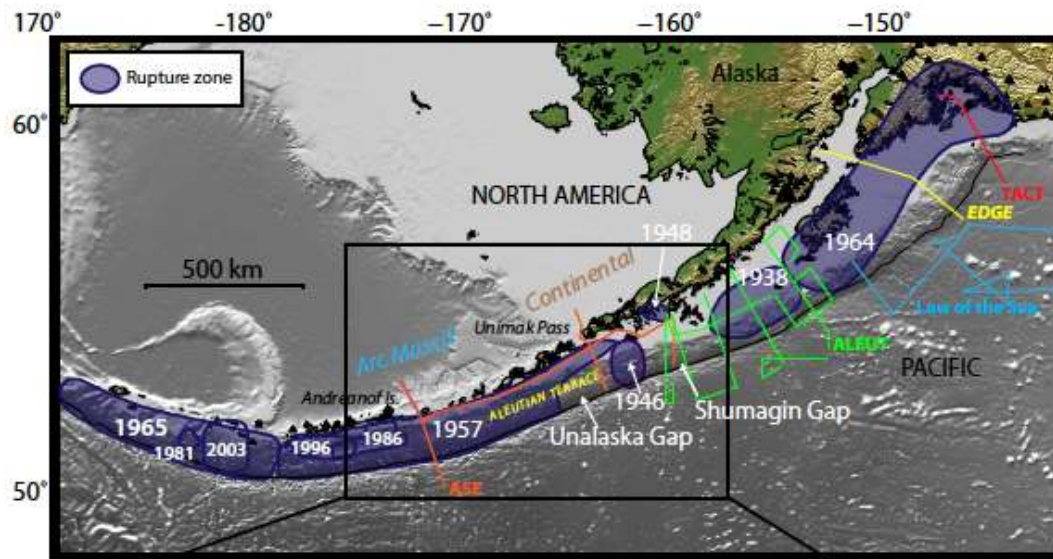


Linkages between along-strike structural variations and seismogenesis in the Central Alaska-Aleutian subduction zone



Upper plate structure and megathrust reflection signature

~700 km segment of the AASZ

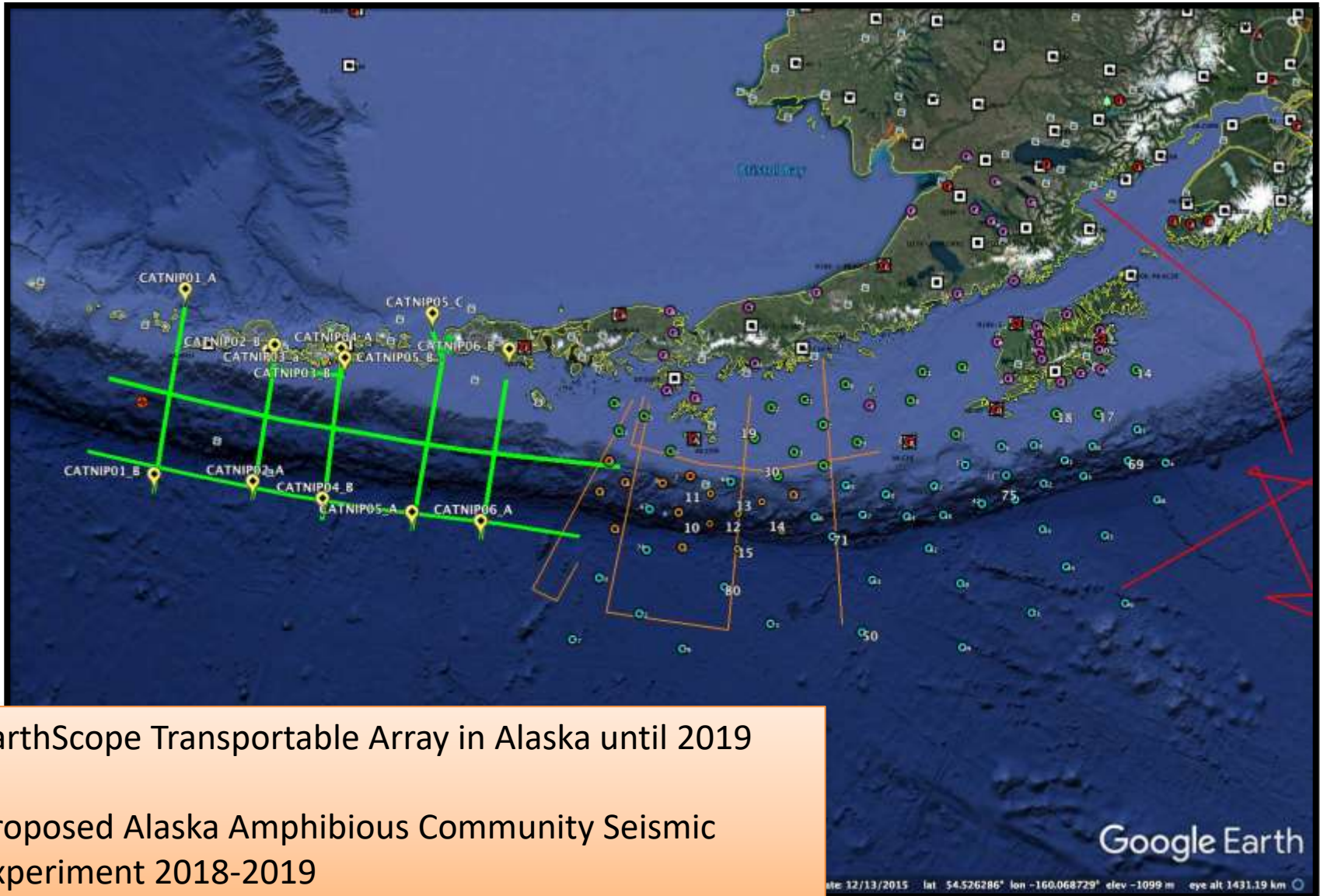
Along-strike diversity in earthquake style, magnitude and fault slip behavior

3 tsunamigenic megathrust ruptures (1788, 1946 and 1957)

Joint long-offset 2d reflection/OBS refraction

~25 days operation (with second OBS vessel); ~35 days Langseth only

Potential synergies with other programs



EarthScope Transportable Array in Alaska until 2019

Proposed Alaska Amphibious Community Seismic Experiment 2018-2019