

Mentors

Van Dover (Duke)

Soule (WHOI)

Fornari (WHOI)

Blackman (SIO)

Bates (Duke)

Co-Chief Scientists

Anne Dekas (Stanford)

Adam Skarke (Mississippi State)

Participant Demographics (24 of 31 applicants)

RANK

6 assistant/associate professors
13 post docs
5 PhD students

GENDER

15 female
9 male

GEOGRAPHIC DISTRIBUTION

10 East Coast
8 West Coast
3 Gulf Coast
3 Central

DISCIPLINES (primary)

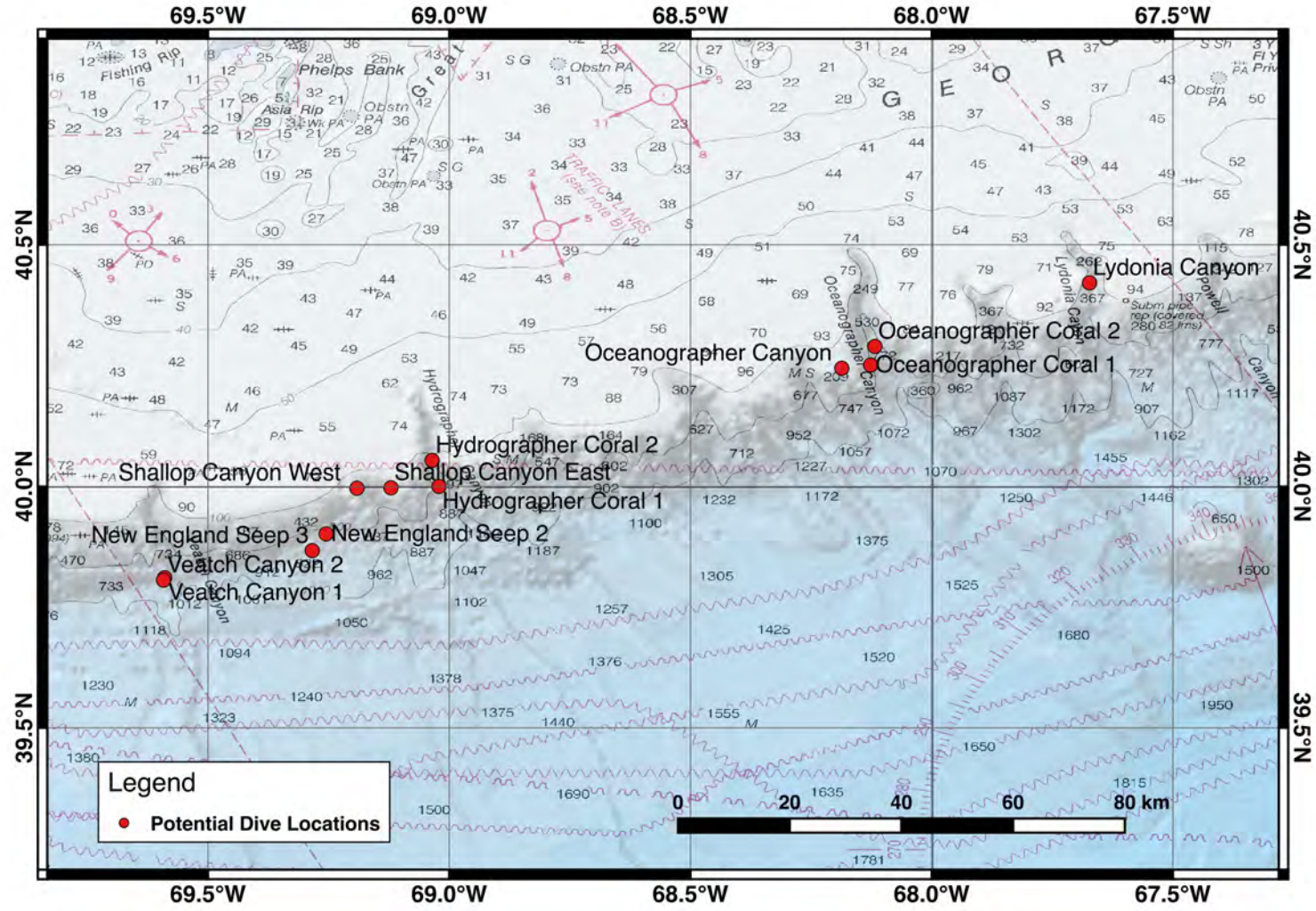
11 bio oce
4 biogeochem/micro
3 chem oce
2 marine geology/geochemistry
1 phys oce
2 paleo
1 mar biol

22 institutions

Program Overview

Date	Activities (URI Inner Space Center and R/V <i>Atlantis</i>)
25 Jul	Travel Day and evening reception
26-27 Jul	Pre-Cruise Training
28 Jul	Depart WH
29 Jul through 1 Aug	5 Alvin Dives (1 engineering and 1 double-dive day) 4 Sentry Missions CTD, multicorer, multibeam, gravity core
2 Aug	WH personnel transfer
3 Aug through 6 Aug	5 Alvin Dives (including 1 double-dive day) 4 Sentry Missions CTD, multicorer, multibeam, gravity core
7-8 Aug	Post-Cruise Training
9 Aug	Travel Day

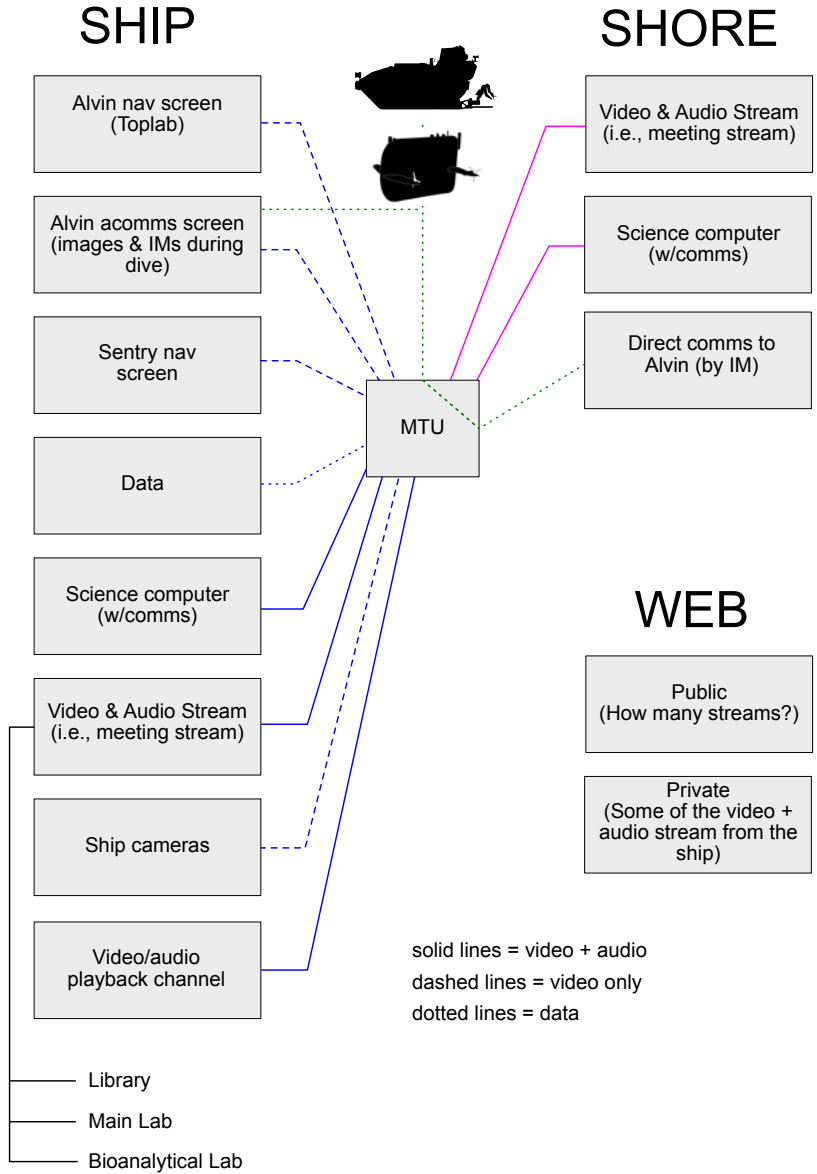
Seeps, Canyons, Water Column

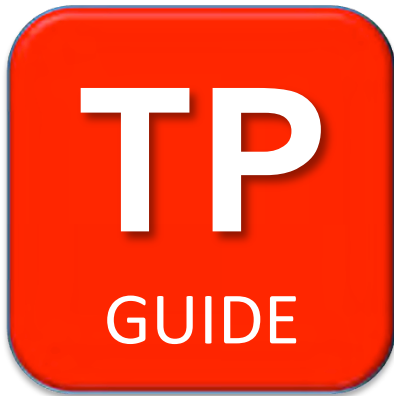


ECS Training by Telepresence

HiSeasNet (6x3 Mhz, 2 wks)

*****seafloor-to-ship-to-shore***
still images & text
(sea trials)**





TelePresence

DRAFT

	TIME (EDT)	ACTIVITY	PRODUCER
	0000	off line 1	
	0100	off line 2	
	0200	off line 3	
	0300	off line 4	
	0400	off line 5	
	0500	off line 6	
	0600	off line 7	
	0700	off line 8	
	0800	off line 9	
ALVIN Live Feeds	0900	Sentry download	Carl Kaiser
	1030	Chief Scientist Training (live, 30 min)	Tony Williams
	1100	Sentry download	Carl Kaiser
	1200	*Curated Content (from Alvin and other video) repeated at 1300, 1500, 1600, 2200; includes news report	Tony Williams, Julian Dale
	1300	Mission Planning (live, 60 min)	Tony Williams
	1400	Q&A Session (live)??	Mercer Brugler
	1500	Off line 10	
	1600	Curated Content (from Alvin and other video)	Tony Williams, Julian Dale
	1700	Alvin Download	Bruce Strickrott
	1800	Daily Science Debriefs (live, 30-60 min)	Tony Williams
	1900	Alvin Download	Bruce Strickrott
	2000	Alvin Download	Bruce Strickrott
	2100	Deep Stories (live news cast 10 minutes)	Karl Bates
	2200	Curated Content (from Alvin and other video)	Tony Williams, Julian Dale
	2300	Off line 11	

Pre-Cruise Training Agenda (Day 1)

- NSF/NOAA/ONR Partners
- UNOLS
 - History, purpose, structure
 - DeSSC
 - Intro to Shiptime Request System
- Intro to NDSF
- UNOLS
 - Shiptime Request System II, including foreign clearances
- Science Communication I
- Science Planning (working lunch)
- *Atlantis, Alvin, Sentry* tours
- Enabling telepresence research: situational awareness, team planning, team effort
- Planning sessions and *Alvin* briefings
- Science Meeting

Pre-Cruise Training Agenda (Day 2)

- Data management requirements and delivery
- Distributed leadership (ship and shore shared responsibilities)
- SSSG and telepresence orientation (incl chain of command, comms protocols, MTU)
- Science Communications II: Intro to social media tools and tactics
- Intro to Ship's Captain and officers
- Intro to Alvin and Sentry personnel
- Science planning
- Plenary discussion, science program
- Science meeting

Pre-Cruise Training Agenda (Day 2)

- Data management requirements and delivery
- Distributed leadership (ship and shore shared responsibilities)
- SSSG and telepresence orientation (incl chain of command, comms protocols, MTU)
- Science Communications II: Intro to social media tools and tactics
- Intro to Ship's Captain and officers
- Intro to Alvin and Sentry personnel
- Science planning
- Plenary discussion, science program
- Science meeting

At-Sea Training Topics (draft)

- From proposal to post-cruise: Chief Scientist responsibilities
- Proposal strategies
- Leading multi- and interdisciplinary science
- Data Management: Optimizing collaborations and science outcomes
- NSF: Insights from a former NSF program manager
- Team building and effective team communications
- Managing expectations, managing conflict
- Navigation: What ties it all together
- Elevators and other equipment
- Public communications

Public Outreach Partner: American Museum of Natural History (NYC)

concept in development, ECS Mercer Brugler (lead)



- possibly linking to AMNH early career scientist programs (e.g., REU)
- may also include *Hall of Ocean Life* component
- much TBD; expect to have a plan vetted by mid June

Assessment

Ten Leadership Themes (DRAFT)

Pre/post cruise participant surveys w.r.t.

1. UNOLS Shiptime Request System
 2. NSF proposal strategies and process
 3. Pre-cruise planning
 4. Understanding *Alvin*, *Sentry*, *Atlantis* capabilities
 5. Developing best practices in telepresence-enabled science
 6. Science communication: video and social media
 7. Data management: requirements and delivery
 8. Team-building and effective team communications
 9. Leading multi- and inter-disciplinary science
 10. Roles of a Chief Scientist
- Are there DeSSC colleagues who might be interested in assisting with drafting this assessment survey (window of ~13 and 30 June)?