

# AICC Chair Report

Bob Campbell

Graduate School of Oceanography,

University of Rhode Island

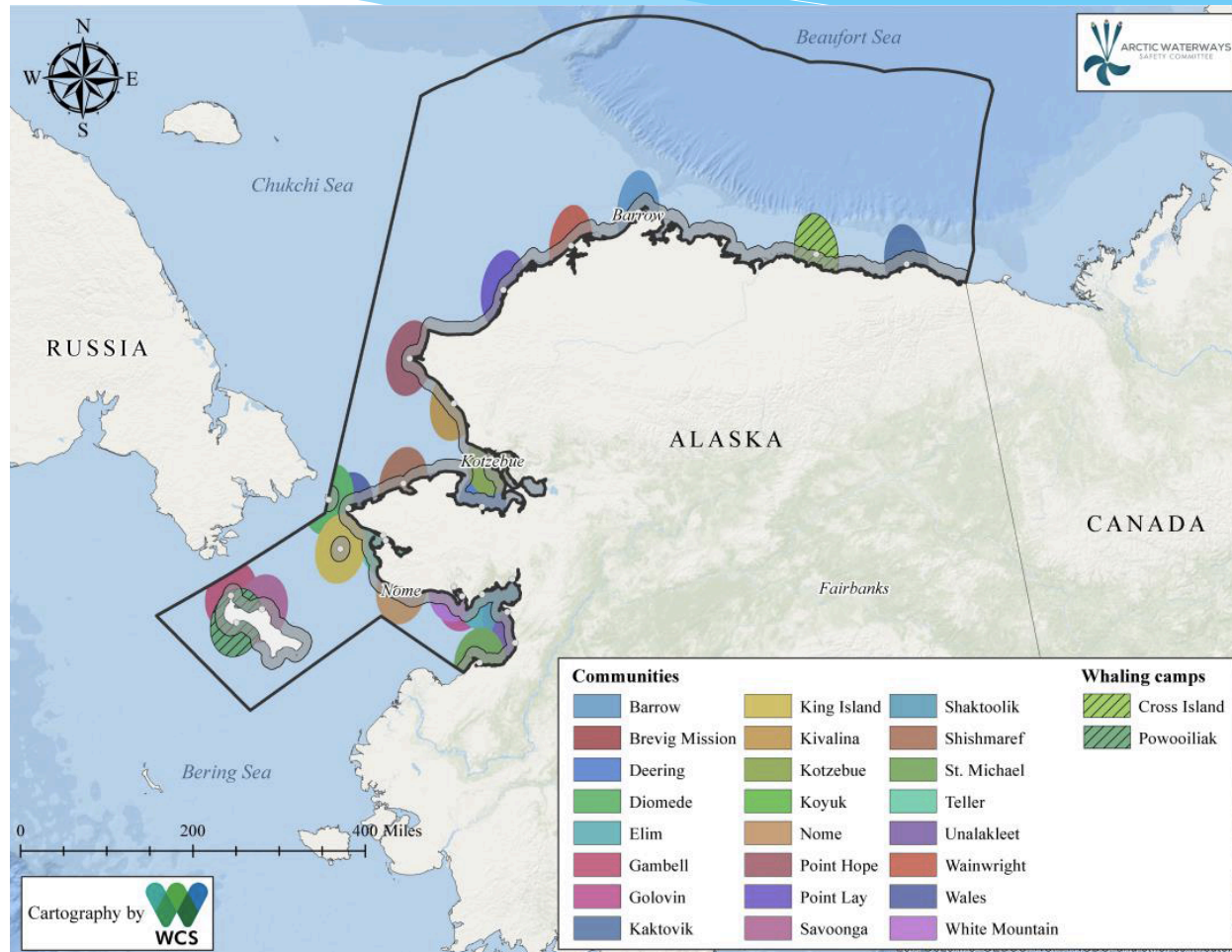
UNOLS Council Meeting,

May 3, 2016, Woods Hole, MA

# Native Community Issues

- \* Alaska Eskimo Whaling Commission Meeting, Barrow, AK, Feb 2016
  - \* Sikuliaq Cruise Plans Presented
- \* Arctic Waterways Safety Committee
  - \* Co-management orgs., industry, and other groups
  - \* Bring users together to define best practices to ensure a safe and predictable operating environment
  - \* Standard of Care Document for Research Cruise Operations
    - \* Reviewed comments at March 2016 meeting

# Community and Subsistence Activity Locations



# New Heavy Icebreaker

- \* Coast Guard accelerates procurement process for new, heavy icebreaker
  - \* Request from White House to move forward
  - \* Planning for 2 new icebreakers
  - \* NSF reluctant to supply science requirements
  - \* Request made to AICC
    - \* If new icebreaker equipped for science will it be used?
    - \* What science capabilities are needed?
- \* Provided list of reports from the National Academies and UNOLS describing mission requirements and needed science capabilities

# Reports

## **UNOLS Report:**

### **A New U.S. Polar Research Vessel (PRV): Science Drivers and Vessel Requirement (2012)**

Final report of the UNOLS PRV SMR Refresh Committee

## **National Academies Reports/Studies:**

### **Icebreaker needs**

#### **Polar Icebreaker Roles and U.S. Future Needs: A Preliminary Assessment (2005)**

Committee on the Assessment of U.S. Coast Guard Polar Icebreaker Roles and Future Needs, National Research Council

#### **Polar Icebreakers in a Changing World: An Assessment of U.S. Needs (2007)**

Committee on the Assessment of U.S. Coast Guard Polar Icebreaker Roles and Future Needs, National Research Council

#### **Science at Sea: Meeting Future Oceanographic Goals with a Robust Academic Research Fleet (2009)**

Committee on Evolution of the National Oceanographic Research Fleet;  
National Research Council

## **Polar Research Missions**

### **The Arctic in the Anthropocene: Emerging Research Questions (2014)**

Committee on Emerging Research Questions in the Arctic; Polar Research Board;  
Division on Earth and Life Studies; National Research Council

### **A Strategic Vision for NSF Investments in Antarctic and Southern Ocean Research (2015)**

Committee on the Development of a Strategic Vision for the U.S.  
Antarctic Program; Polar Research Board; Division on Earth and Life  
Studies; National Academies of Sciences, Engineering, and Medicine

### **Arctic Matters: The Global Connection to Changes in the Arctic (2015)**

National Research Council of the National Academies

# Polar Star Science Capabilities



- \* Science capabilities not currently being maintained
- \* Plans being considered to remove port side J frame and winch to put in storage to preserve
- \* Only current mission – McMurdo resupply

# USCGC Healy 2016 Schedule



- \* 02 Jul/10 Aug, Seward/Seward, NOAA/Hopcroft, HLY1601
- \* 16 Aug/17 Sep, Seward/Nome, Navy/Worcester, HLY1602
- \* 19 Sep/06 Oct, Nome/Dutch Harbor, NOAA/Mayer, HLY1603

# R/V Sikuliaq 2016 Schedule



- \* 28 Aug/8 Oct, NSF/Juranek/Sipler
- \* 14 Oct/5 Nov, ONR/Badley

# Foreign Vessels



- \* Canada, CCGS Sir Wilfrid Laurier, July 10-22
- \* South Korea, RV Araon, August
- \* Russia, (RUSALCA), RV Victor Buynitskiy, Sept. 10-30
- \* Japan, RV Mirai, Sept.
- \* China, CHINARE-7, July-Sept

