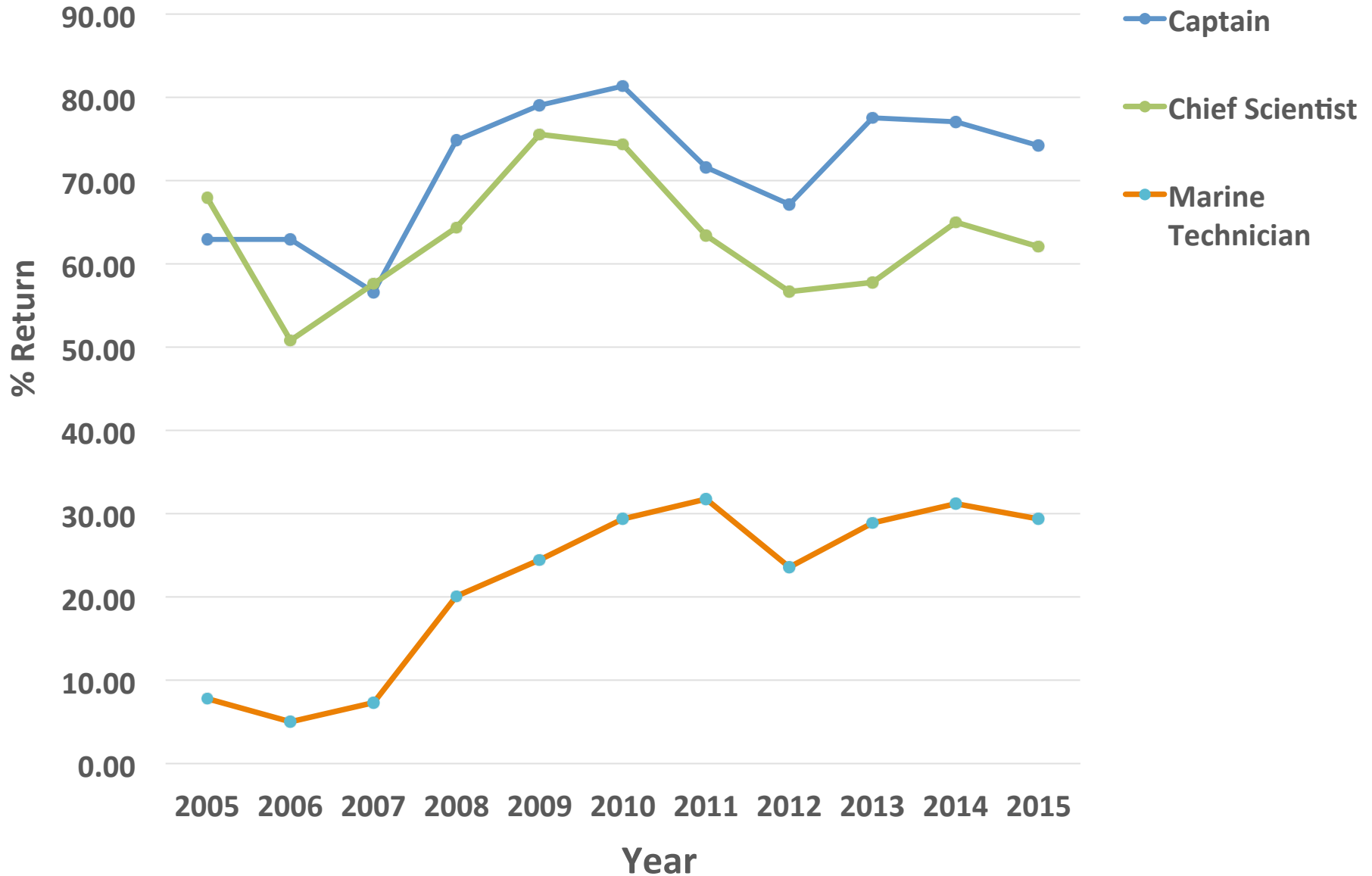




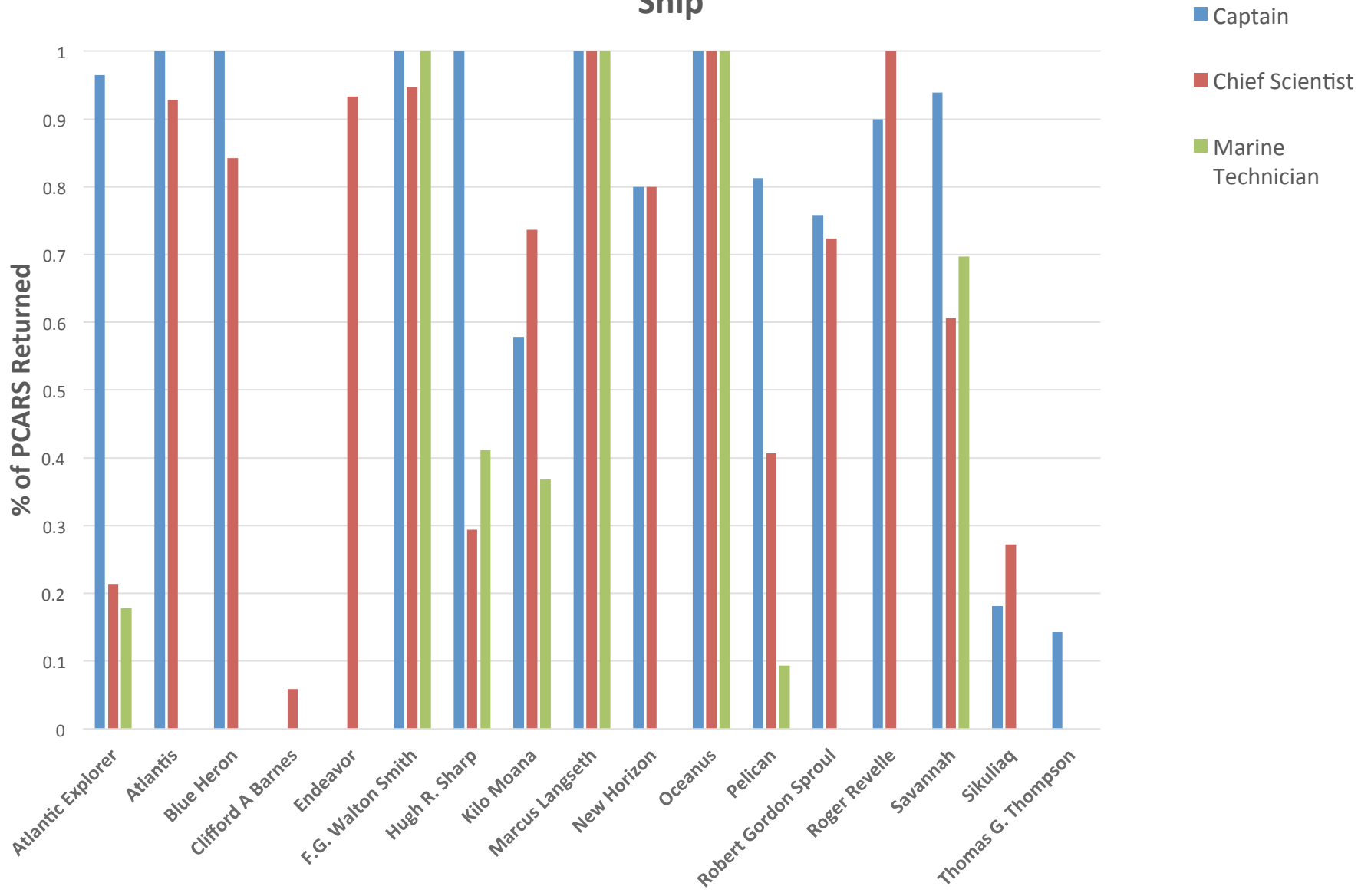
Summary of 2015 Post Cruise Assessment and Safety Reports

2016 Council Meeting
Woods Hole, MA

Fleetwide Percent Return for Post Cruise Assessments 2005-2015



2015 % PCAR Return: Captain, Chief Scientist, and Marine Technician by Ship



UNOLS PCAR Program: Successes and Shortcomings

- ✓ 8 Ships have increased response rates since last year
- ✓ Online Form in STRS has helped with recordkeeping and convenience
- ✓ % Return for Chief Scientists has been below 75% since 2010
- ✓ Some PI's *still* do not know about the form
- ✓ Some Captains and Marine Techs refuse to fill out PCARs
- ✓ Great diversity in response rates among fleet
- ✓ Some PCARs are turned in 9 months after cruise and/or do not include many details to make them useful
- ✓ Tendency to submit PCAR's just before a ship inspection with little information.

UNOLS PCAR Program: Path Forward, Potential Ideas

- (3) Separate forms for Captains, Techs, and Chief Scientist
- Auto-Email sent out to remind each group to submit report.
- UNOLS Office will work with each Operator to see how they tell PIs about PCARs
- UNOLS Office will also work with Operators to gather feedback from Captains and Techs about the PCAR Process

Additional Ideas? Please send them to the UNOLS Office!

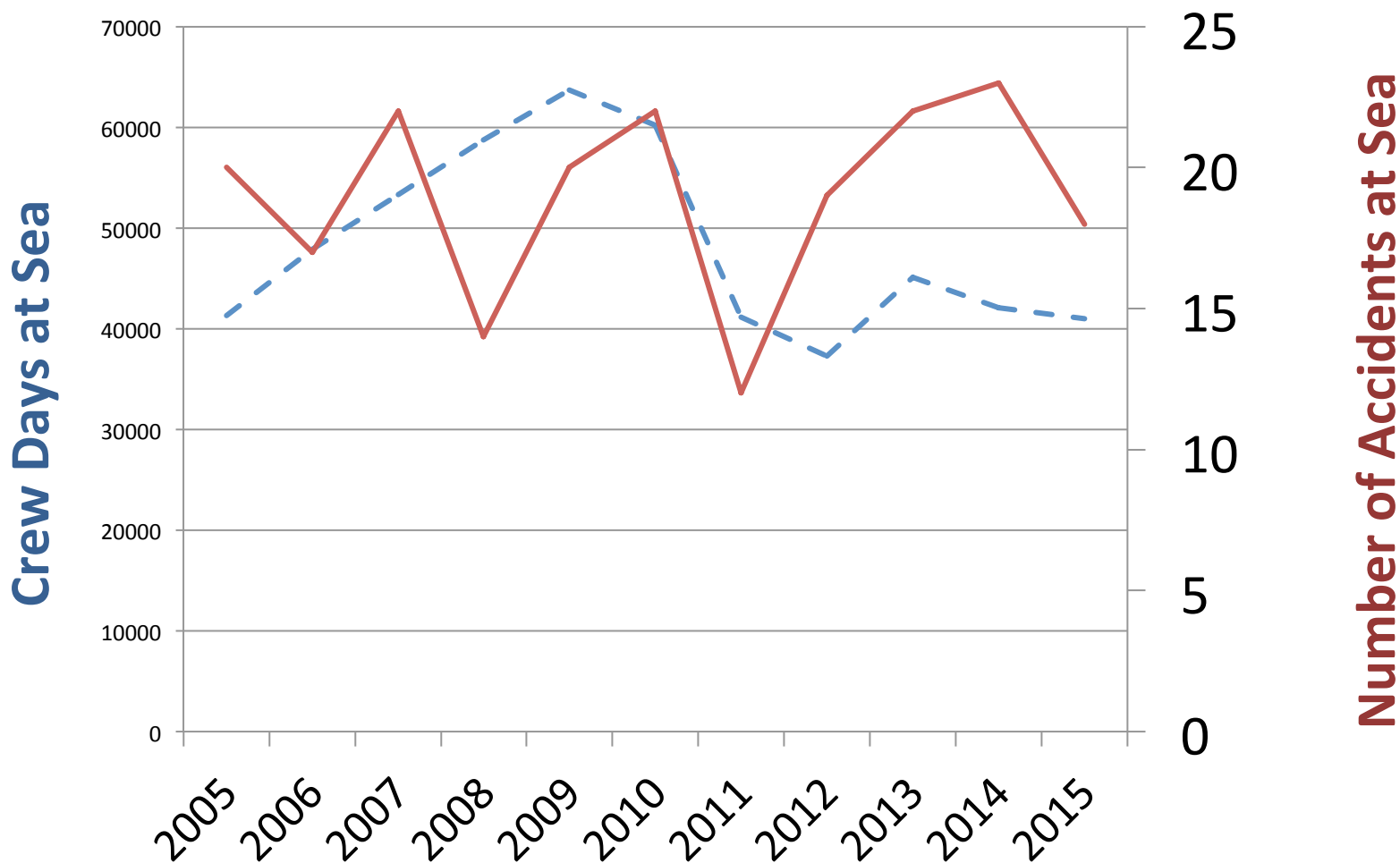
Status of Safety Reports Submitted for 2015

2016 Safety Reports
 Submittal Rate
 of 41% so far
 (Q1)

Ship	Q1	Q2	Q3	Q4
Atlantic Explorer	X	X	X	X
Atlantis	X	X	X	X
Blue Heron	X	X	X	X
Clifford A Barnes	X	X	X	X
Endeavor	X	X	X	X
Hugh Sharp	X	X	X	X
Kilo Moana	X	X	X	
Marcus Langseth	X	X	X	X
Neil Armstrong			X	X
New Horizon	X			
Oceanus	X	X	X	X
Pelican	X	X	X	X
Robert Gordon Sproul	X	X	X	X
Roger Revelle	X	X	X	X
Savannah	X	X	X	X
Sikuliaq	X	X	X	X
Thomas G Thompson	X	X	X	X
Walton Smith	X	X	X	X

Total Days at Sea and Total Accidents at Sea UNOLS Vessels 2005-2015

--- Days at Sea
— Accidents at Sea



2015 UNOLS Fleet Accidents at Sea

18 TOTAL ACCIDENTS

