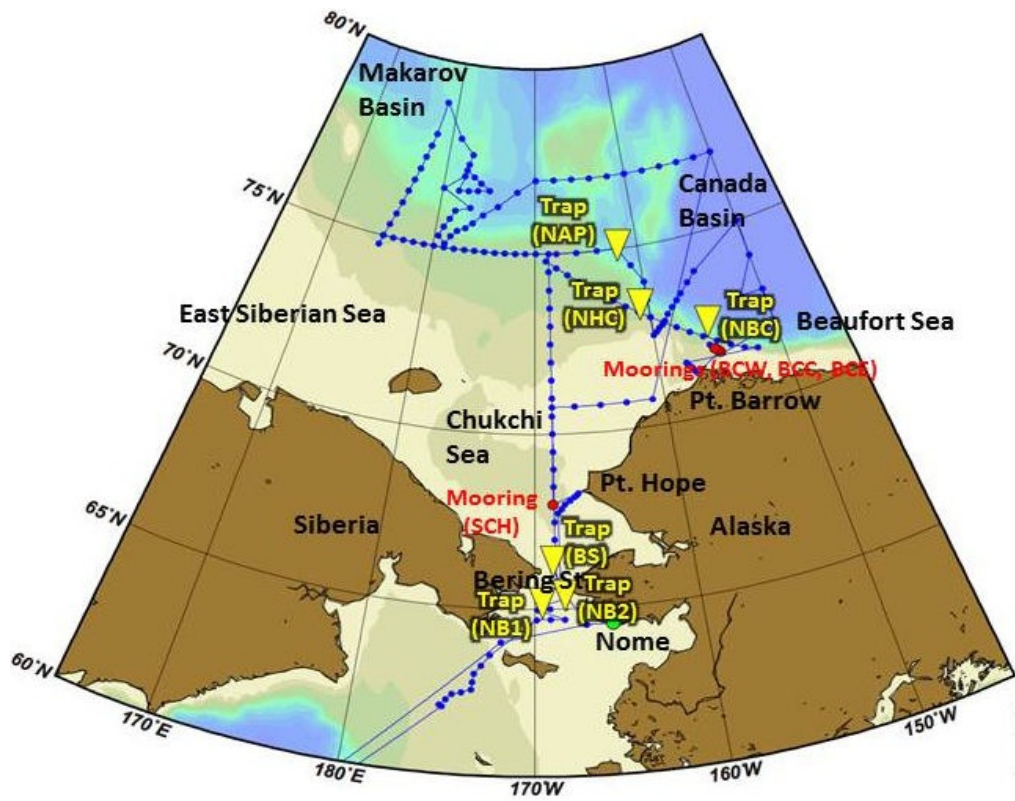
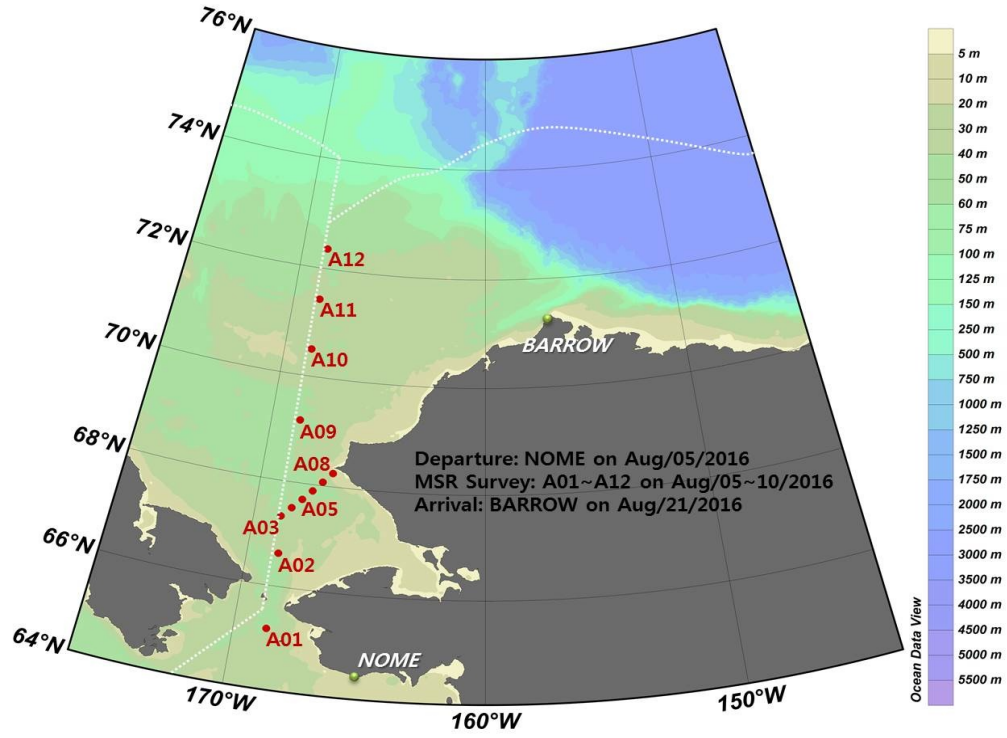


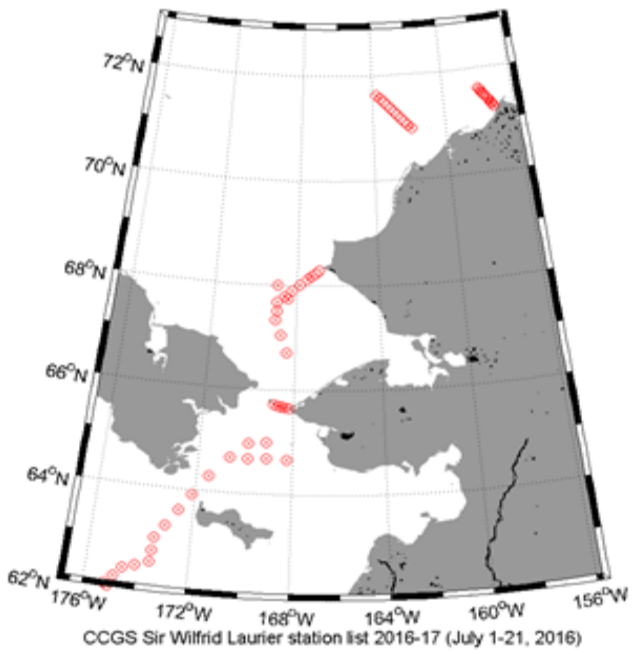
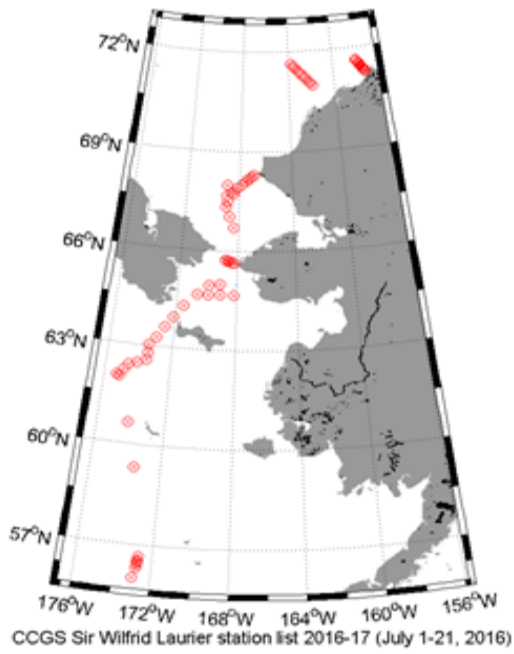
Table 1

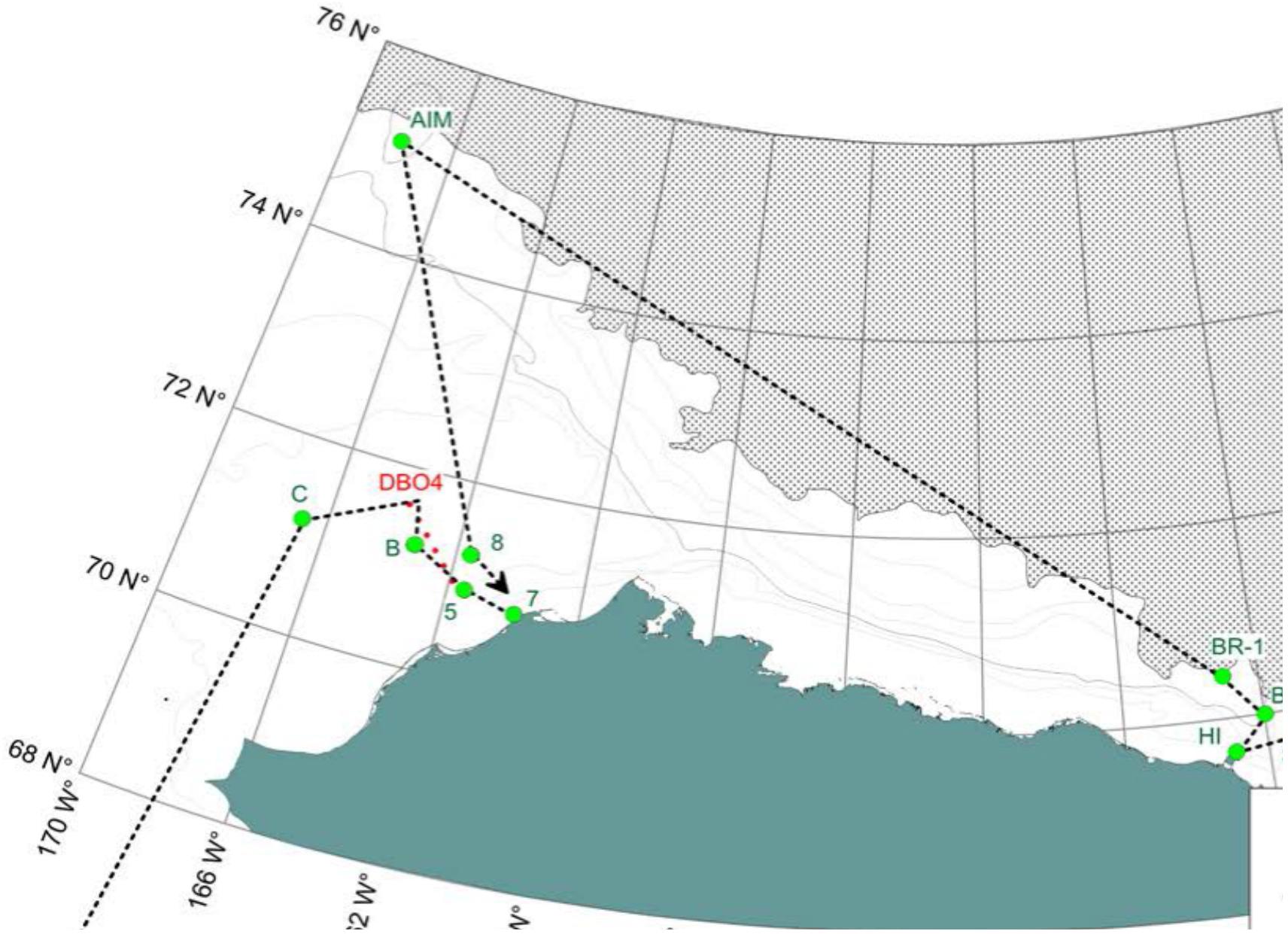
Vessel	N - Bstrait - demarcation line	S - Bstrait - demarcation line	Dist fr Shore Chukchi	Planned Arrival Barrow	Heading fr Barrow/Dates	Dist fr Shore Beaufort	Planned Arrive Eastern Beaufort	Approximate Location for Research	Vessel Operator Contact	Research Contact
USCG Healy	7-Jul	4-Aug	> 40 nm	None	None	> 40 nm	None	Chukchi/Beaufort	David.Forucci@uscg.mil, 206 217 6648	RRHopcroft@alaska.edu, 907-474-7842
USCG Healy	21-Aug	15-Sep	> 40 nm	None	None	> 40 nm	None	Chukchi/Beaufort	David.Forucci@uscg.mil, 206 217 6648	Pworcester@ucsd.edu, 858-534-4688
USCG Healy	19-Sep	6-Oct	> 40 nm	None	None	> 40 nm	None	Beaufort Sea	David.Forucci@uscg.mil, 206 217 6648	Larry Mayer larry@ccom.unh.edu, 603-862-2615
Norseman II	8-Jul	14-Jul?		None	None	?	None	Bering Strait	Sheyna Wisdom@fairweather.com, 907-267-4611	Woodgate@apl.washington.edu, 206-221-3268
Norseman II	17-Jul	14-Sep?		None	None	?	31-Jul		Sheyna Wisdom@fairweather.com, 907-267-4611	?
NOAA Oscar Dyson	None	None	None	None	None	None	None	Aleutians and Bering Sea fisheries	Chiefops.mop@noaa.gov, 541 867 8703	John Clary john.c.clary@noaa.gov
NOAA Ranier	None	None	None	None	None	None	None	Aleutians and Bering Sea fisheries	Chiefops.mop@noaa.gov, 541 867 8703	John Clary john.c.clary@noaa.gov
NOAA Fairweather	None	None	None	None	None	None	None	Aleutians and Bering Sea fisheries	Chiefops.mop@noaa.gov, 541 867 8703	John Clary john.c.clary@noaa.gov
Sikuliaq	2-Sep	28-Sep	>30 nm	15-Sep	15-Sep	Small Boat Personnell Transfer Only	None	Chukchi/Beaufort	MStein10@alaska.edu, 907-224-4305	Juranek@coas.oreg.onstate.edu, (541) 737-2368
Sikuliaq	14-Oct	5-Nov	> 40 nm	None	None	None	None		MStein10@alaska.edu, 907-224-4305	badley@udel.edu, (302) 831-3687
CCG St. Laurent	9/15/2016	10/15/2016	NA	None	None	>40	None	Beaufort Sea	?	Bill.Williams@dfompo.gc.ca, 250-363-6343
CCG Laurier	12-Jul	7/24/2016			21-Jul?	40 nm	23-Jul	Victoria - Barrow	Alan.Mohr@dfompo.gc.ca, 250-413-2818	Jane.Eert@dfompo.gc.ca, 250-363-6588
CCG Laurier	10/2/2016	13-Oct	4 nm	None	None	3 nm	7-Oct	Chukchi/Beaufort	Alan.Mohr@dfompo.gc.ca, 250-413-2818	Hurfrey.Melling@dfompo.gc.ca, 250-363-6552
Araon	August	September		None				Chukchi Borderland	Iridium- 8816 5146 5162 http://www.kopri.re.kr	Sung-Ho Kang shkang@kopri.re.kr
Xuelong	August	September		None			None	Arctic Basin	F(tel)870-763677986 B(tel)870-341210310.FB (tel)870--773121916	Li Yuansheng, liyuansheng@pic.org.cn
Mirai	August	September		Only if weather pushes them away from ice				Arctic Basin	INMARSAT B, NSTAR, TELEPHONE 343193916	Shigeto Nishino nishinos@jamstec.go.jp
FV Aquila	3-Sep	22-Sep	8 sampling lines. At their closest point to land, two are 4-5nm offshore, 3 are 6-8 nm, 3 are 17-22nm, and 1 is 99nm.	None	none	3-20 nm	None	Bering/Chukchi/Beaufort		Chief Scientist: Catherine.Berchok@noaa.gov 206.526.6331 Research Contact: Phyllis.Stabenog@noaa.gov 206.526.6453



### 2016 ARAON Cruise Map - Arctic Ocean







Bering Strait

16

158

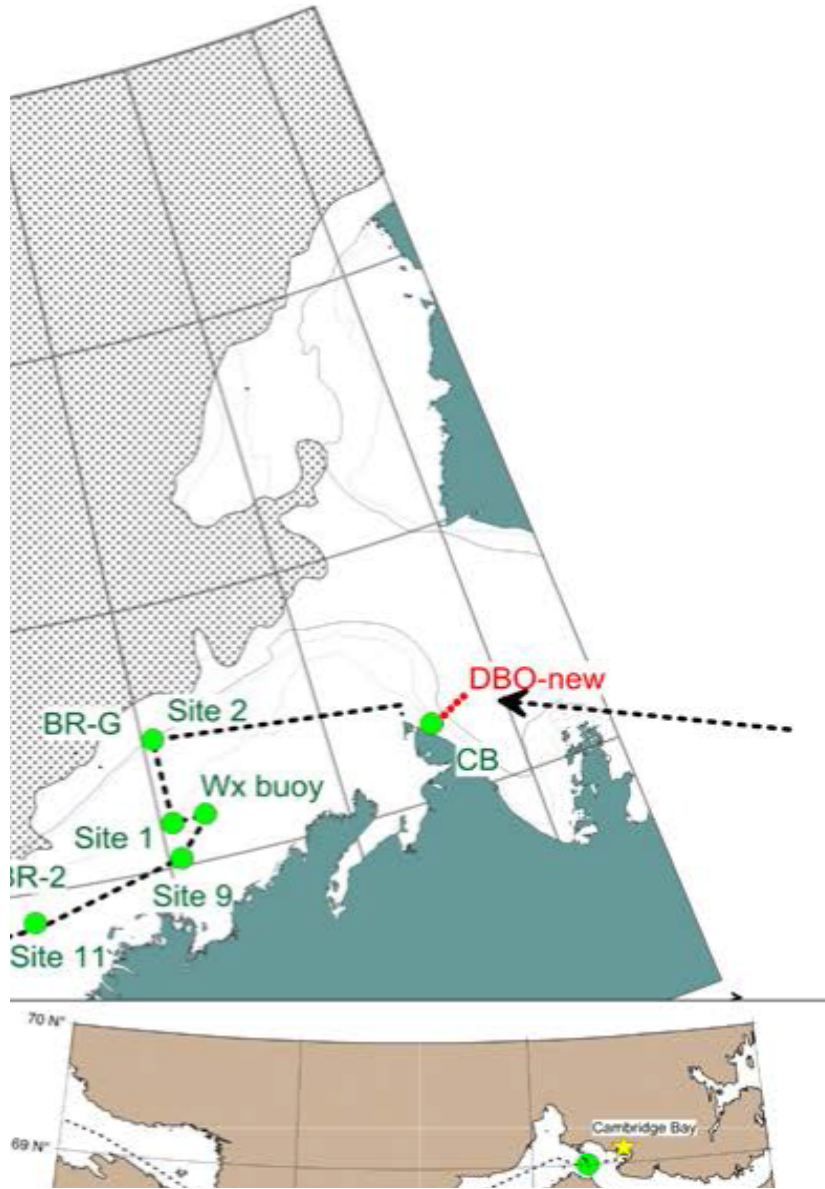
154 W°

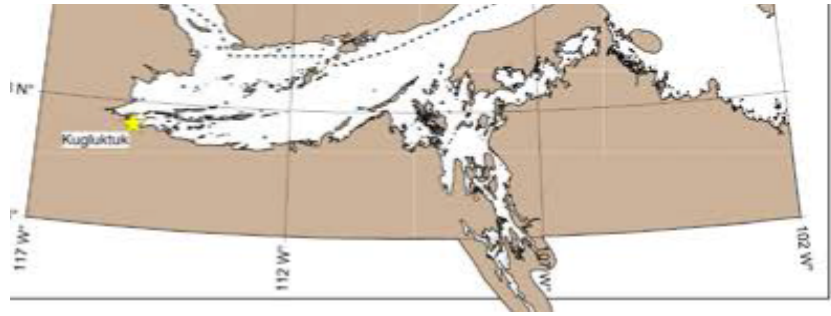
150 W°

146 W°

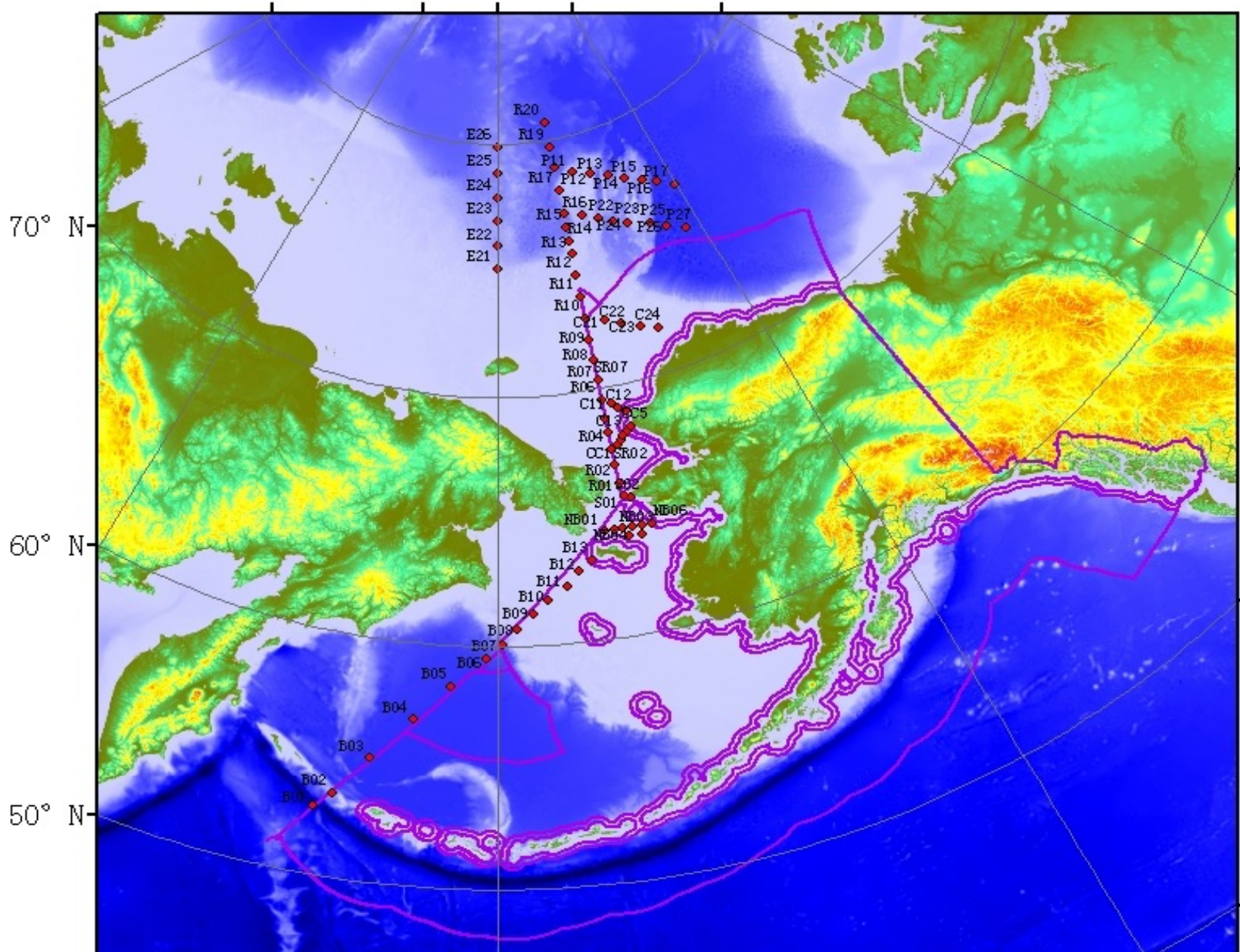
142 W°



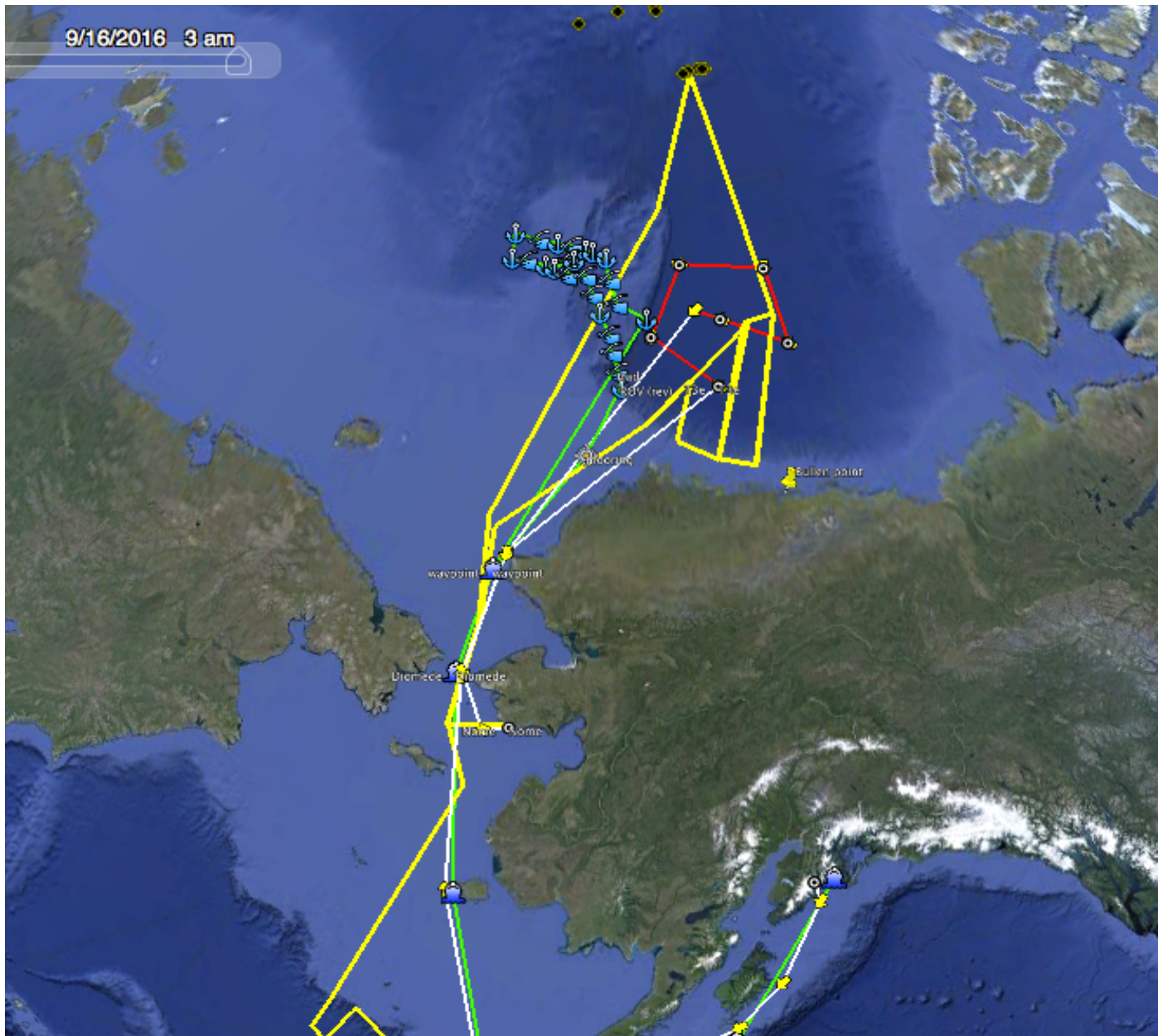






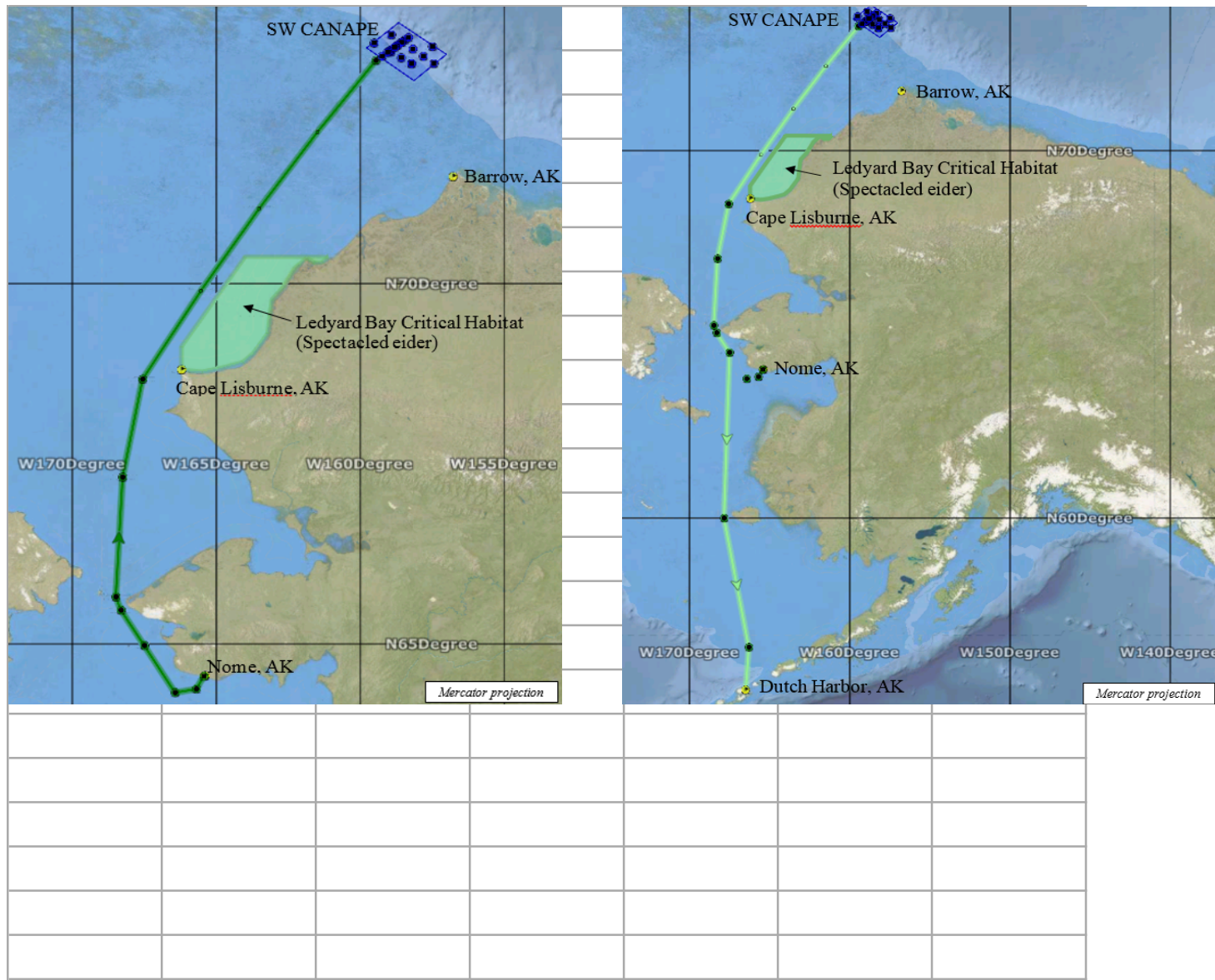












	Oct 15-17 track				7-Nov track
--	--------------------	--	--	--	-------------

