

# Ocean Class AGOR Update



UNOLS FIC Meeting

December 2015

Mike Prince

## *R/V Sally Ride (AGOR 28) - Planned Schedule*

- Currently undergoing final outfitting, equipment commissioning and testing*
- Builder's trials to start in January 2016*
- Early March 2016– Acceptance Trials, Navy INSURV*
- Late April 2016 Planned Delivery (Delivery date may be postponed if Mission Equipment Installation takes place at DCI in April – No major net effect on schedule)*
- April – June: Fitting Out Availability and installation of Acoustic Systems & Mission Equipment. Actual Schedule and location of Mission Equipment Installation still to be determined.*
- Summer 2016: Transit to San Diego, further outfitting, shakedown and science verification cruises*
- Science Operations towards the end of the year 2016*



# DRAFT 2015-2016 Schedule, *R/V Armstrong*



December-January      Phase III Outfitting  
Detyen's Shipyard: Charleston, SC

Feb. 9-17      Shakedown Cruise II  
Charleston - Charleston SC

Feb. 22-29      Shakedown Cruise III  
Charleston - Charleston SC

March 5-13      Science Verification I  
Charleston - Charleston SC

March 17-25      Science Verification II  
Charleston - Charleston SC

March 29-April 5      Science Verification III  
Charleston SC - Woods Hole MA

April 14-20      Science Verification IV  
Woods Hole MA

April 25-29      Final Acceptance Trials/INSURV  
UNOLS Designation  
Woods Hole MA

May 18-31      OOI Pioneer Cruise  
Woods Hole MA

June 7-13      Science Verification IV  
Woods Hole MA

June 7-13      Science Verification V  
Woods Hole MA

June 19-25      Science Verification VI  
Woods Hole MA

June 27-July 28      OOI Irminger Sea  
Reykjavik, Iceland

Aug 3 – Sept 8      OSNAP West Cruise  
St. John's, Canada

Sept. 23-Oct. 7      Warranty Drydock  
TBD

Oct. 10 - Nov. 1      OOI Pioneer Cruise  
Woods Hole MA

Nov. 14-19      Science Verification VII  
Woods Hole MA

# Planned Types of SVC Cruises/Activities



## Science Verification Cruises

- Mooring
- Hydrography
- ROV w/ shipmounted USBL
- Biophysical inc. bioacoustics
- Geophysics
- Coring
- Laboratory function
- Ship's underway sensors
- Ship's underway data collection
- Communications ship to shore & data transfer
- Telepresence

## Shakedown Cruises

- Multibeam Oversight Committee
- ADCP Performance (Jules Hummon)
- Winch & wire deployments with CTD
- Ship networking and data logging and integration
- Ship meteorological, underway seawater, and hull-mounted sensor function

The first three SVC cruises will include testing of all capabilities required for the first funded science cruises

The later four SVC cruises will expand to test the whole suite of *Armstrong* science capabilities

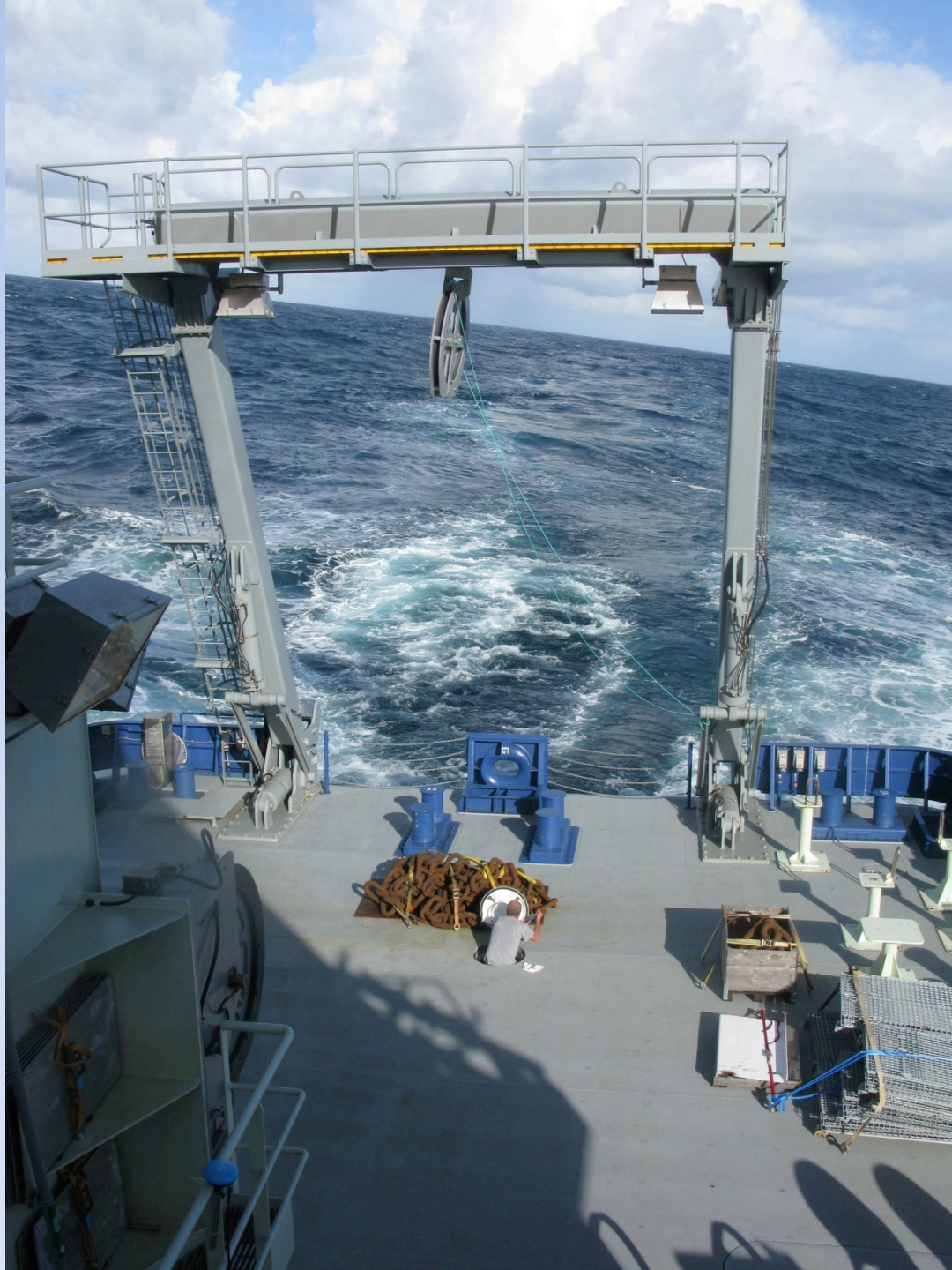








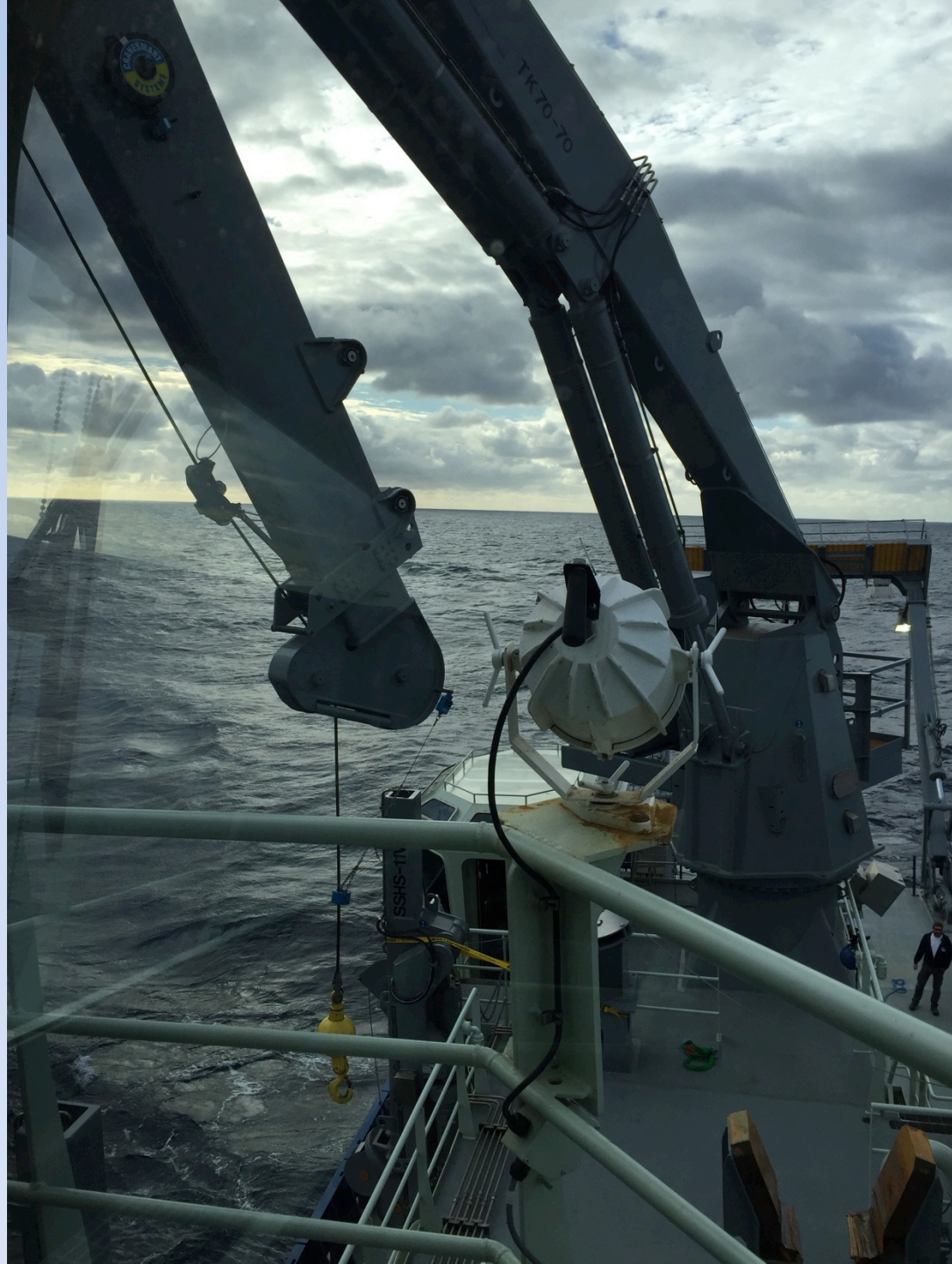


















Archiving data to C:\Users\SSSG\Documents\ar01001.hex

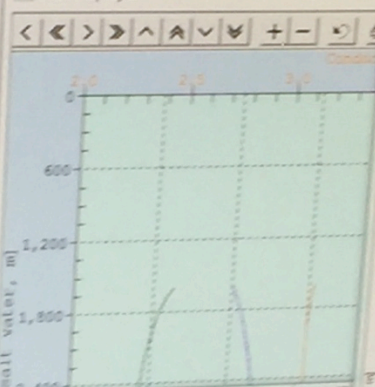
ar01-01

Fixed Display 1

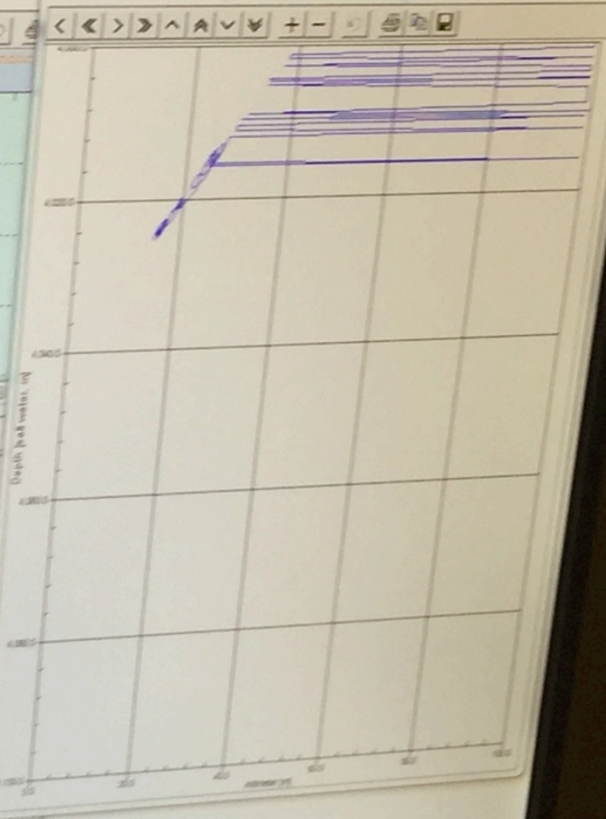
Scan Count	131289
Pressure, Digiquartz [db]	4021.59
Depth [salt water, m]	4020.52
Altimeter [m]	19.15
Temperature [ITS-90, deg C]	14.007
Temperature, 2 [ITS-90, deg C]	14.002
Conductivity [S/m]	3.1679
Conductivity, 2 [S/m]	3.1706
Salinity, Practical [PSU]	34.6338
Oxygen Saturation, Weiss [ml/l]	11.7960
Oxygen, SBE 43 [% saturation]	107.4902

Plot Display 1

ar01001.hex

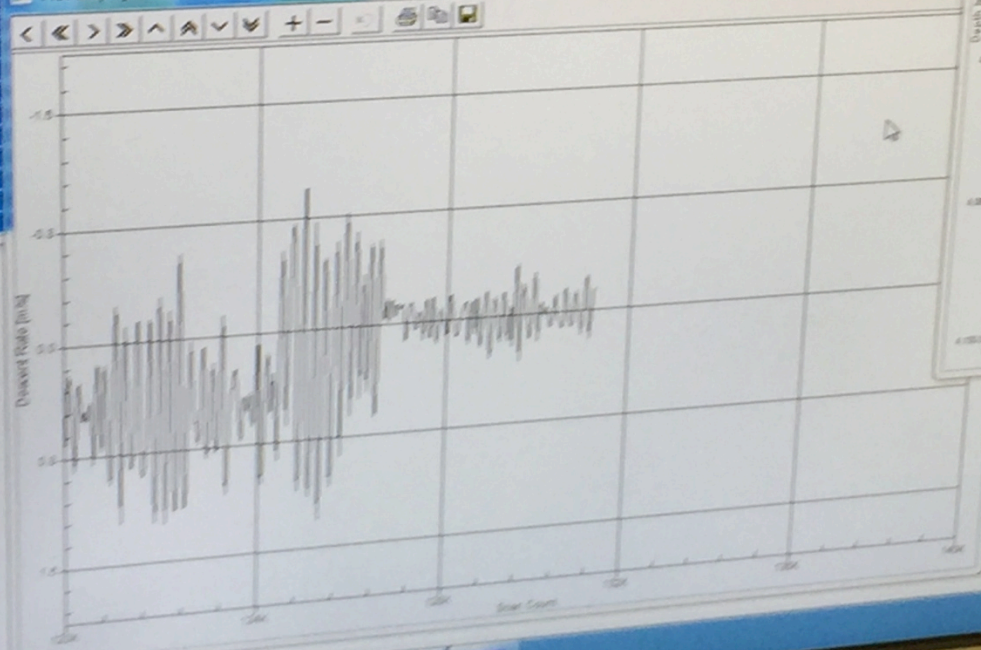


Plot Display 3



Plot Display 2

time-depth









# Former KNORR Crew Now ARMSTRONG Crew Questions?

