

SeepC: R/V *Atlantis* expedition

6th – 29th July 2015

Chief Scientist: CL Van Dover

Co-PIs: C Young, S Maslakova (U Oregon)
R He, D Eggleston (NCSU)
C Cunningham (Duke)

Alvin Expedition Leader: R Waters
Sentry Expedition Leader: C Kaiser

Duke
UNIVERSITY

NC STATE
UNIVERSITY

O

UNIVERSITY
OF OREGON

Phillip Turner

phillip.turner@duke.edu

Nicholas School of the Environment | Duke University

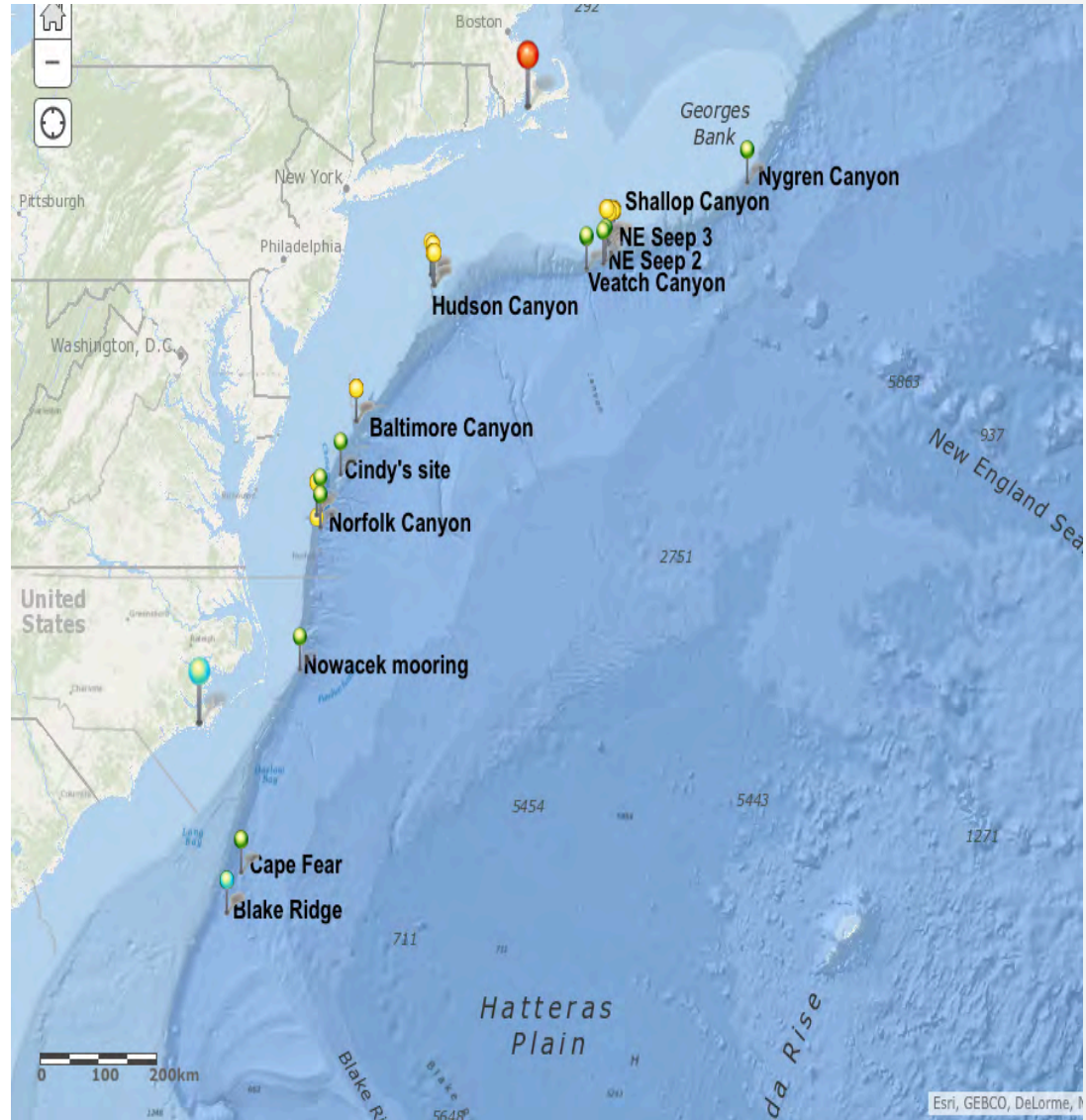
Sites

Mooring Recovery

- Blake Ridge
- Cape Fear

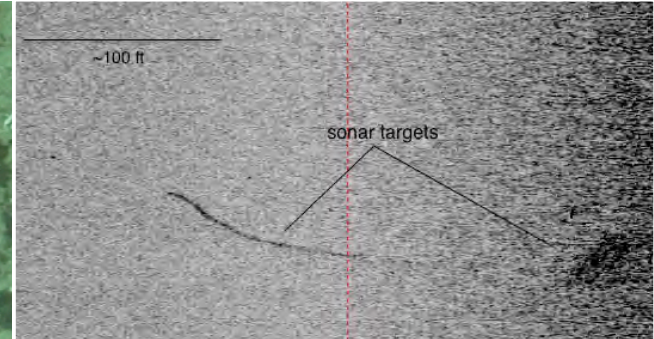
Characterizing Invertebrate Communities

- Norfolk East
- Norfolk West
- C-Site (new)
- Baltimore
- Veatch
- Shallop
- New England Seep 2



Mooring Search: *Sentry* + *Alvin*

Blake Ridge



National News Coverage

Fox8

Discovery-news

CNN

nbc-news

CBS

Shallow and Deep Seeps: *Alvin*

Shallow: 300 – 500m

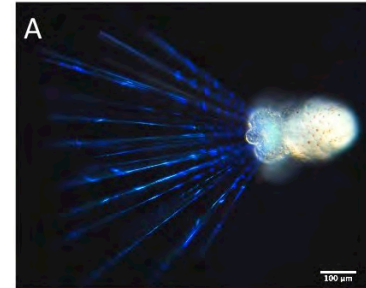
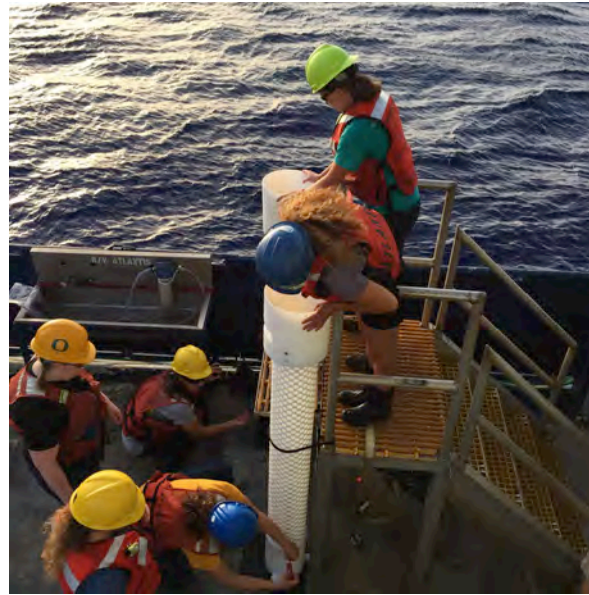
Deep: 1000 – 1500m

Baltimore Canyon – 410m

Norfolk Canyon East – 1460m



Plankton Sampling: *SyPRID*



A Precision, Large Volume Plankton Sampler - *SyPRID*

Samples collected from <5m above bottom

- MOCNESS: unable to sample the bottom 50 – 100m

Sampled at seep / non-seep sites to investigate assemblage differences

SyPRID

Sentry Precision, Robotic, Propeller-Driven Plankton Sampler



FUNDING:

SeepC Project

NSF OCE-1031050 (Van Dover)

NSF OCE-1030453 (Young)

Sentry Operations

NSF OCE-1036843 (A Bowen)

Duke
UNIVERSITY



SENTRY
National Deep Submergence Facility