

Rolling Deck to Repository



Cruise Catalog

- retired *New Horizon*, *Knorr*, *Melville*
- *Point Sur* moved to LUMCON
- *Sikuliaq* joined
- NOAA test project with *Ron Brown*, *Okeanos*
- *Falkor* joined
- started profiles for *Armstrong*, *Sally Ride*
- crossdeck six older vessels



Alpha Helix (retired)



Atlantic Explorer



Atlantis



Blue Heron



Cape Hatteras (retired)



Clifford A. Barnes



Corwith Cramer



Endeavor



Eltanin (retired)



F.G. Walton Smith



Falkor



Healy



Hugh R. Sharp



Ka'imikai-O-Kanaloa



Kilo Moana



Knorr (retired)



Laurence M. Gould



Marcus G. Langseth



Maurice Ewing (retired)



Melville (retired)



Moana Wave (retired)



Nathaniel B. Palmer



New Horizon (retired)



Oceanus



Okeanos Explorer



Pelican



Point Sur



Robert C. Seamans



Robert D. Conrad (retired)



Robert Gordon Sproul



Roger Revelle



Ronald H. Brown



Savannah



Sikuliaq



Thomas G. Thompson



Vema (retired)



Thomas Washington (retired)



Wecoma (retired)



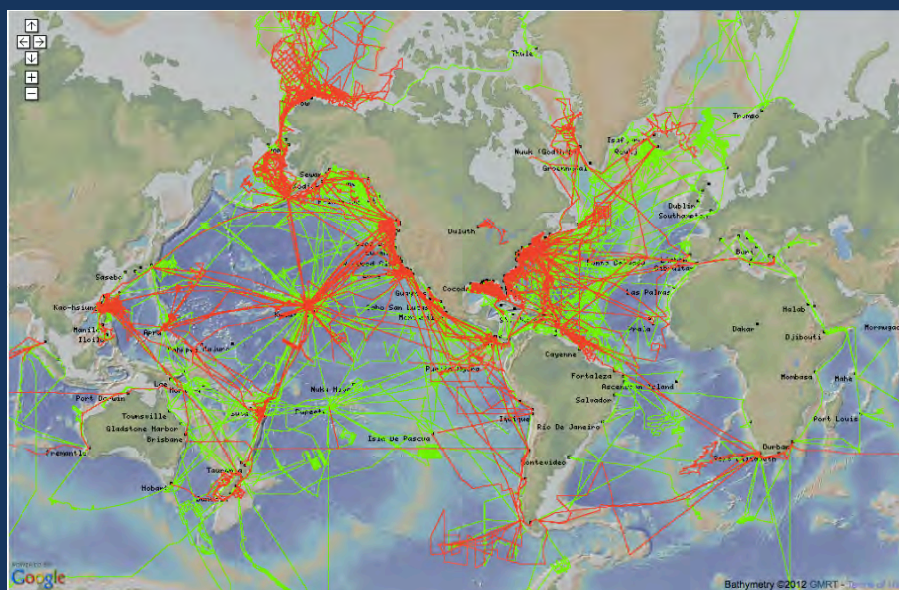
Data Types/Volume

Currently:

25 In-Service Vessels
~400 Cruises/Year
~400 Instrument Systems

Total as of November 2015:

5,822 Cruises
20.1M Files Archived



— New cruises since R2R launch in 2009
— Additional/ legacy cruises

Instrument Types:

ADCP

Anemometer

Camera

CTD

Expendable Probe

Flowmeter

Fluorometer

GNSS /INS

Gravimeter

Gyrocompass

Magnetometer

Met Station

Multibeam

pCO2

Radar

Radiometer

Rain Gauge

Singlebeam

Speed Log

SSV

Thermometer

Timeserver

Transmissometer

TSG



Winch

Development Work

- Released Nav Manager code <http://github.com/rvdata>
- Launched Vessel Profiler <http://tech.rvdata.us>
- Started publishing Digital Object Identifier (DOI) for every cruise
- Dropped Vessel Tracker page
- All operators now submitting Cruise Personnel Manifests, R2R provides annual summary to UNOLS Office



Community Projects

- EarthCube – build new tools to find +reuse research data



R2R participates in EarthCube projects

- SeaView
- GeoLink
- X-DOMES

Goal: Link cruise data across repositories, raise visibility of the US academic fleet

- ODIP – interoperability between national/regional fleets

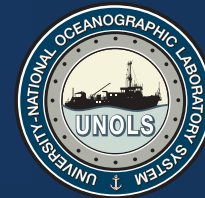


Looking Ahead

- Upgrade R2R server/network infrastructure for ever-increasing data volumes
- Add search interface to Web site
- WG to define spec for end-of-cruise instrument summary ?
- Advisory Panel meeting (SIO early 2016), will include reps from RVTEC and NCEI



Acknowledgements



info@rvdata.us

