

# AICC Chair Report

Lee Cooper

Chesapeake Biological Lab

University of Maryland Center for Environmental  
Science, Solomons Maryland

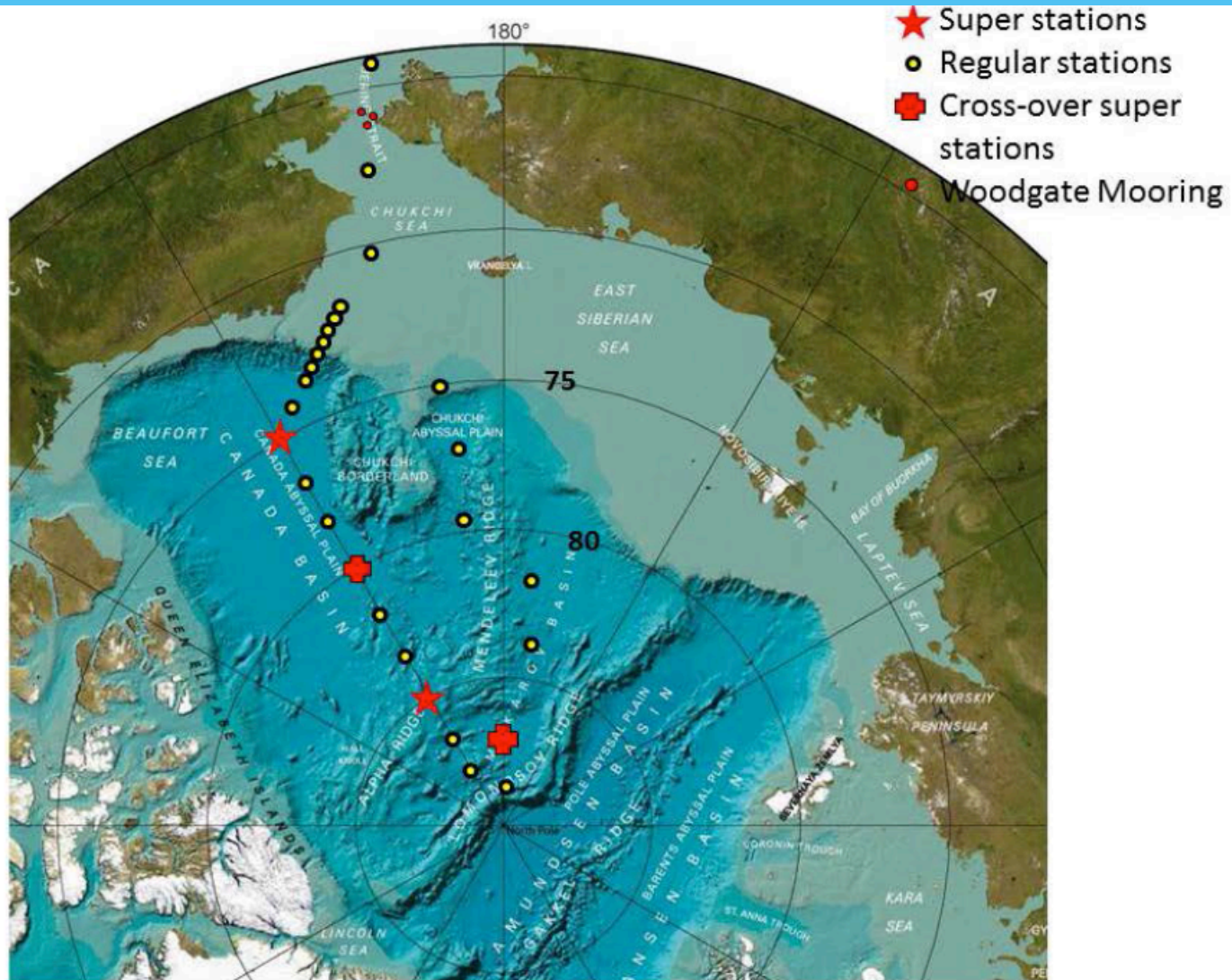
UNOLS Council Meeting,

May 7, 2015, Naval Observatory, Washington DC

# Arctic Geotraces Cruise using Healy

Dave Kadko,  
Florida  
International  
University is  
Chief  
Scientist

August-  
October 2015  
Dutch  
Harbor-  
Dutch  
Harbor  
Ship is full



# CCGS Amundsen



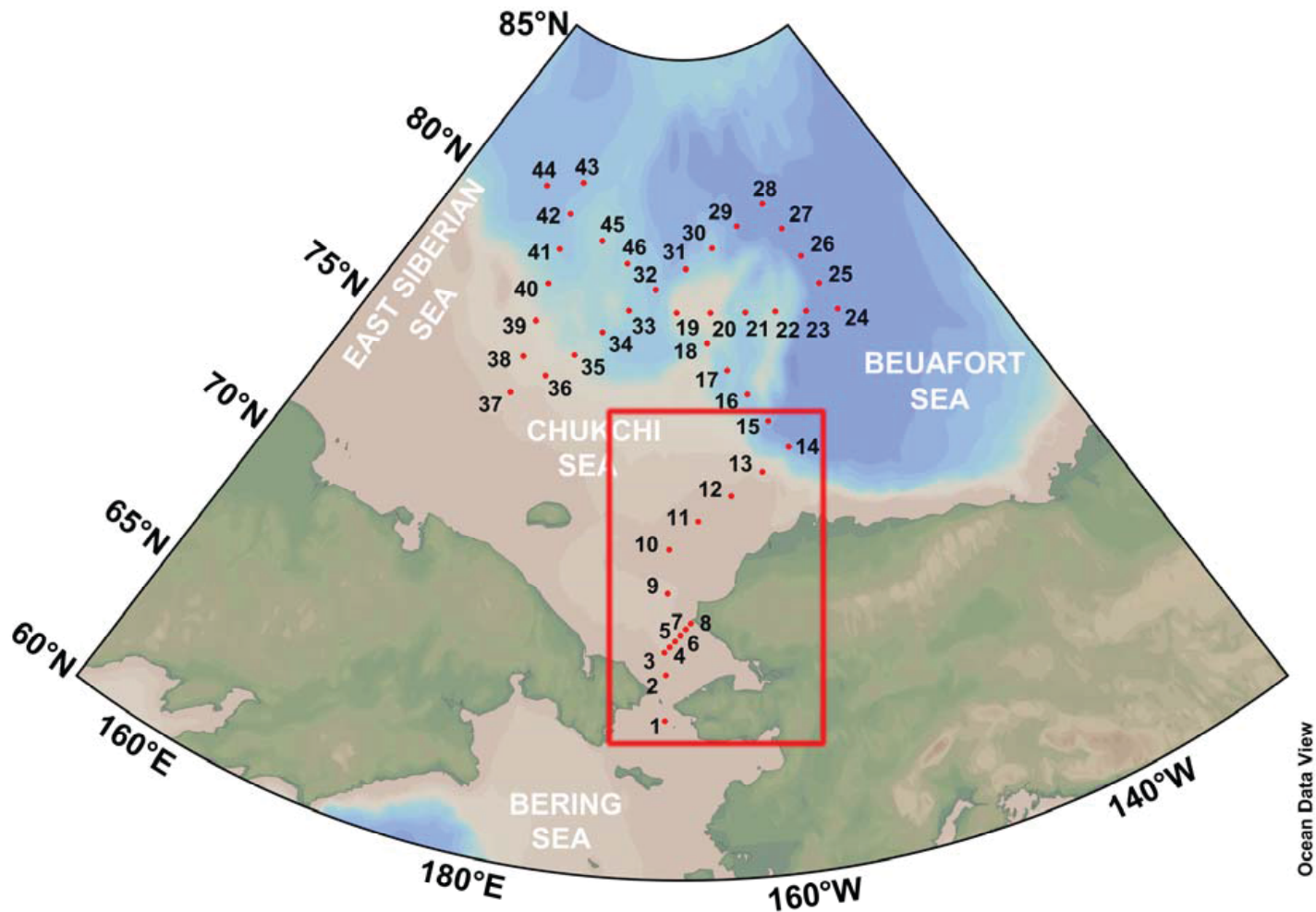
Consolidated Agenda  
Tenth Meeting of the Board of Directors February 10th, 2015  
FedNav Board Room  
1000 de La Gauchetière West, Montréal, QC

# US Swedish Planning Workshop on Joint Arctic Research Using the I/B Oden

- \* March 30 – April 1, 2015, Sigtuna, Sweden
- \* 15 scientists from each country participated
- \* Two AICC members, Bob Campbell and Larry Mayer
  - \* Report available
- \* Oden use in 2015 (Petermann Glacier in Greenland)
- \* Atmospheric oriented joint cruise in 2017 or 2018
- \* Options for additional joint use in future years
- \* Increases flexibility for funding cruises in the North Atlantic Arctic



# RV Araon cruise plan 2014



Attachment 1. Map of proposed sampling site (red dots) and area of US waters (red box)

# Alaska Maritime Prevention & Response Network (<http://www.ak-mprn.org/>)

- \* Oil spill risk reduction effort
- \* Vessels required to join network
- \* Once a member, agree to not sail within 12 miles of Alaska
- \* Navigation exceptions approved by Coast Guard
- \* No work in ice
- \* “Public” vessels exempt
- \* Conference call held with Coast Guard April 17
- \* NSF (Kelly Falkner and Renee Crain) informed and involved

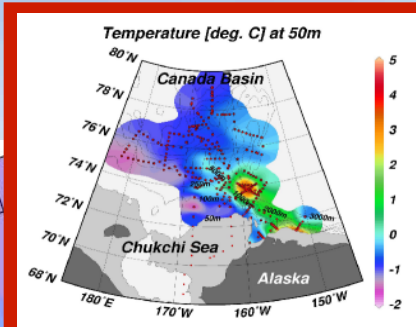
# Japanese research vessel cruise in 2015

## R/V Mirai Arctic cruise in September-October 2015

“Observational Studies on the Arctic Ocean Climate and Ecosystem Variability”

PI: Dr. S. Nishino (JAMSTEC)

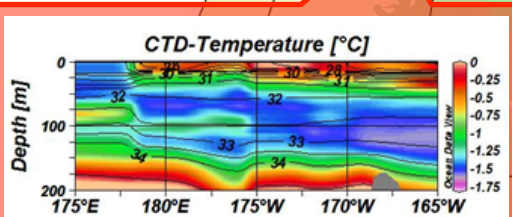
R/V Mirai (JAMSTEC)



Large warm-core eddy & its impact to marine ecosystem  
**Kawaguchi et al. [2012]**  
**Nishino et al. [2011b]**

Revisit obs.

Siberian shelf-basin interaction



Impact from Siberian shelf water & the inter-annual variability  
**Nishino et al. [2008, 2013]**

Intensive obs. of eddy & shelf-break jet by CTD/LADCP/water sampling and TurboMAP

[ Tentative cruise plan ]

August 25: Hachinohe (JAPAN)

September 4: Bering Str.

**Observations in the Arctic Ocean**

October 3: Bering Str.

October 6: Dutch Harbor (in)

October 9: Dutch Harbor (out)

October 21: Hachinohe (JAPAN)



# JAMSTEC moorings in the Chukchi Sea and Canada Basin

## Sediment trap in the Canada Basin

CAP-12t; 75d 12.371m N, 172d 32.919m W, 447m dep  
 NAP-12t; 75d 00.171m N, 162d 00.182m W, 1971m dep  
 NAP-13t; 74d 31.361m N, 161d 55.592m W, 1681m dep  
 → Recovered

## At the mouth of Barrow Canyon

**BCW-14; 71d 47.742m N, 155d 20.750m W, 170m dep.**  
**BCC-14; 71d 43.585m N, 155d 11.108m W, 283m dep.**  
**BCE-14; 71d 40.353m N, 154d 59.742m W, 106m dep.**  
 → Recovered and Re-deployed

## Barrow Canyon close to DBO-5 line

**BCH-14; 71d 18.920m N, 157d 08.802m W, 62m dep**  
 → Recovered and Re-deployed

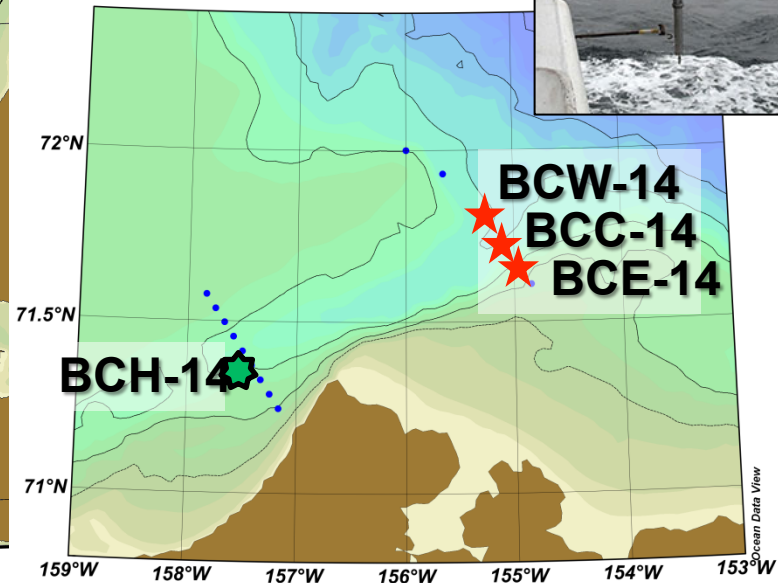
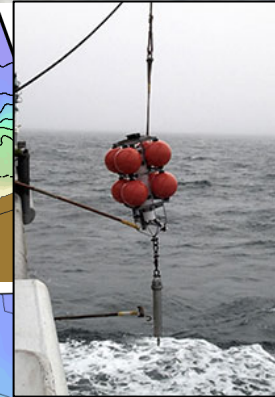
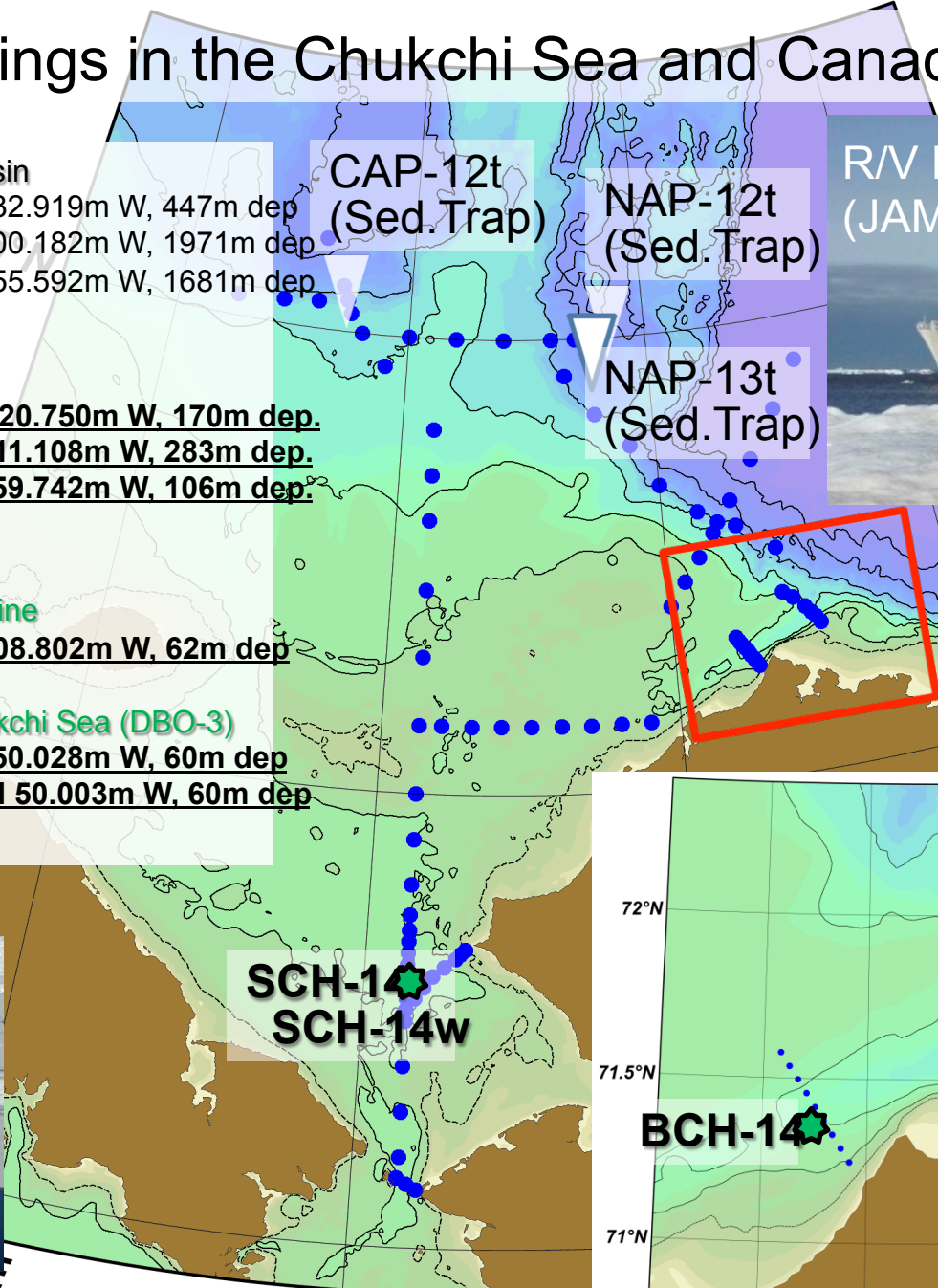
## Hope Valley in the southern Chukchi Sea (DBO-3)

**SCH-14; 68d 02.002m N, 168d 50.028m W, 60m dep**  
**SCH-14w; 68d 03.006m N, 168d 50.003m W, 60m dep**  
 → Recovered and Re-deployed

R/V Mirai  
(JAMSTEC)



CCGS S. W. Laurier





# Next Meeting, June 9, 2015 Via Teleconference

- \* Alaska Maritime Prevention & Response Network (<http://www.ak-mprn.org/>)
- \* Pre-brief for Arctic GeoTRACES cruise 2015
- \* Habitability improvements to Healy berthing
- \* Icefloe website improvements
- \* Local Alaska community relations
- \* Oden use in 2015 and beyond
- \* Agency, STARC and Coast Guard reports
  - \* Early planning new Coast Guard icebreaker
- \* Long-term committee leadership