

# Office of Marine & Aviation Operations (OMAO)



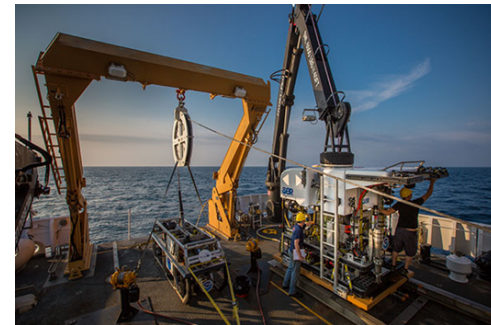
RDML Anita L. Lopez

Deputy Director for Operations,  
OMAO



# Agenda

- NOAA Fleet Highlights
- NOAA FY15 Fleet Allocation Plan
- NOAA – UNOLS Partnership
- Future Initiatives





# NOAA Highlights

- OMAO Budget to support NOAA requirements remains stable
- New Director, Marine Operations – CAPT Bridgeman
- New Program, Planning and Services Division
- Maturity of Safety Management System
- NOAA/USCG Fleet Plan signed
- NOAA Prioritization, Allocation and Scheduling System (PASS) becoming an effective maritime scheduling asset
- Upgrades to Mission Equipment
- Greening the Fleet
- Annual ECO and Survey Tech Training continues





# FY2015 Omnibus Fleet Allocation Plan

MOC PACIFIC	DAS/OD	FPD	OCT	NOV	DEC	JAN	FEB	MAR	APR	MAY	JUN	JUL	AUG	SEP				
OSCAR DYSON	206/219	0	B M T 5 1 9	DOCKSIDE REPAIRS ISM/STCW TRAINING	OMAO SD/ST	T 4 G T M T 3 3 3 3	POLLOCK 19	I POLLOCK 18	MSR OMAO U 3 12	LGA NMFS GOA 23	SUMMER WALLEYE POLLOCK GULF OF ALASKA	NMFS 60	EMA FOCI NMFS GOA/BS 28	FOCI 10				
FAIRWEATHER	184/262	0	DRYDOCK - STARTED FY2014 ISM/STCW TRAINING			OMAO S/SD	10	T COAST SURVEY 2 SE ALASKA	NOS 34 CS SI, AK 19	I SURVEY SI, AK	NOS 19 COASTAL SURVEY ARCTIC ALASKA	NOS 61	UAS NMFS NBS 21	SURVEY 17				
RAINIER	192/223	42	SURVEY 15	C SURVEY SAN JUAN IS	NOS 30	DOCKSIDE REPAIRS ISM/STCW TRAINING	OMAO SD/ST	COASTAL SURVEY CHATHAM STRAIT	NOS 49	I COASTAL SURVEY ARCTIC ALASKA	NOS 58	COAST SURVEY S ALASKA PEN	NOS 36	E 3				
BELL M. SHINADA	206/222	0	T DRYDOCK PERIOD 3 ISM/STCW TRAINING	OMAO SD/ST	OMAO T 4	I NCC SRKW NMFS WA 21	DSC&S 13 WEST COAST	CPS SURVEY NMFS 34	DS 10	MSR FSA 15	JOINT PACIFIC HAKE & SARDINE WEST COAST OF US AND CANADA	NMFS 80	NCC 15					
REUBEN LASKER	120/126	30	SHAKEDOWN/TESTING			OMAO	DOCKSIDE REPAIRS/MISSION AND ACOUSTIC TRIALS ISM/STCW TRAINING					OMAO 30	CPS NMFS W COAST 30	MARINE MAMMAL (PART 1) WEST COAST	NMFS 60			
HI'IALAKAI	202/212	0	I DOCKSIDE REPAIRS ISM/STCW TRAINING	OMAO SD/ST	S ASRAMP AMERICA SAMOA	NOS 46	OA OAR 13 AMERICAN	ASRAMP NMFS 28	R 4	MSR HMS NMFS NWHI 22	REEF NMFS MHI 20	WHO 8	RAMP NWHI	NOS 30	BIOGEO NWHI	NOS 30		
OSCAR ELTON SETTE	186/195	27	M DEBRI NWHI	NMFS 27	I DOCKSIDE REPAIRS ISM/STCW TRAINING	OMAO SD/ST	G 5	FISH O M T & CETACEANS MARIANAS	NMFS 44	FISH OAT W PACIFIC	NMFS 33	LHS NMFS C PAC 24	BTMFS 15	HMS NMFS NWHI 22				
MOC ATLANTIC																		
RONALD H. BROWN	243/349	0	TAO NWS TROP PAC 27	TAO NWS T PAC 20	MSR	CALWATER2 PACIFIC	OAR 30	TAO-ARRAY TROP PACIFIC	NWS 36	P16N CLIVAR/CO2 REPEAT HYDRO NORTH PACIFIC OCEAN	OAR TT 68 22	I MSR OA OAR GOA 20	FOCI 16	BA&SR 14	T 7	DSR ISM		
NANCY FOSTER	178/201	0	VIIR 10	I DOCKSIDE REPAIRS ISM/STCW	OMAO T DD EM710 I&a	OMAO SD/EFHMA USVI 18	CRER USVI	OAR 22	BF TUN NGOM	NMFS 25	EC 6 FKNMS 16	EFH-MAP 17	SREA 10	EPA 10	EPA 10	EFH-MAP 17		
THOMAS JEFFERSON	194/220	0	SURVEY BUZ BAY	NOS 39	T DD/DOCKSIDE EM710ACCEPT	OMAO T 4	HSRR & SURVEY BUZZARDS BAY	NOS 42	HAB 12	SURVEY NOS ECCOAST 21	I C SURVEY EAST COAST	NOS 30	COASTAL SURVEY SAVANNAH, GA	NOS 40				
OKEANOS EXPLORER	191/272	22	SM 7	HAB 9	T 3	MSR	OMAO T MST&M 4	OMAO P 4	EXPLORE-MAPPING/ROV CARIBBEAN	OAR 63	EXPLORE-MAP TROP PACIFI	OAR 32	I EXPLORE MAP/ROV-CAP NWHI	OAR 45	CAP NMFS NWHI 20	C 3		
OREGON II	215/219	0	SM FALL SHRIMP GULF OF MEXICO	NMFS 41	T DRYDOCK PERIOD ISM/STCW TRAINING - PROG MAINTENANCE	OMAO T SD 4	PELAGIC LL GULF OF MEX	NMFS 36	I PLANKTON NGOM	NMFS 30	SUMMER SHRIMP GULF OF MEXICO	NMFS 38	SHARK/RED SNAPPER SAB & GULF OF MEXICO	NMFS 62				
FISCES	195/228	0	DW BIO NW ATL	NMFS 22	ECOMON 18	T&B 8	DOCKSIDE REPAIRS ISM/STCW TRAINING	OMAO SD/	SM RF VIDEO GULF OF MEXICO	NMFS 40	I RF GOM 20	MPA 14	S EFIS S ATL BIGHT	NMFS 34	MSR PLANETON GULF OF MEX	NMFS 36		
GORDON GUNTER	220/245	0	SMALL PELAGICS GULF OF MEXICO	NMFS 41	T DOCKSIDE REPAIRS ISM/STCW TRAINING	OMAO SD/ST 4	PLANETON GULF OF MEX	NMFS 33	I T & R WHALE GULF OF MAINE	NMFS 39	NERAC 13	OCEAN ACID EAST COAST	OAR 34	MARINE MAMMAL GULF OF MEXICO	NMFS 55			
HENRY B. BIGELOW	216/293	4	BOTTOM TRAWL NORTH ATLANTIC	NMFS 39	DOCKSIDE REPAIRS ISM/STCW TRAINING	OMAO SD/S 1	ECOMON 16	SPRING BOTTOM TRAWL NORTH ATLANTIC	NMFS 60	A 4	SMFI 11	C&T MAINE	NMFS 27	MSR OMAO DC 12	BH 11	TC 6	BTM TRAWL N ATL	NMFS 28
FERDINAND R. HASSLER	187/209	0	COASTAL SURVEY CHESAPEAKE BAY	NOS 40	C SURVEY GULF OF MAINE	NOS 35	T DOCKSIDE REPAIRS ISM/STCW TRAINING	OMAO T S 3	H 4	A 1	C SURVEY RHODE ISLAND	NOS 34	MSR CS 13	COASTAL SURVEY CHESAPEAKE BAY	NOS 54			
Fleet Totals	3135/3695	125																



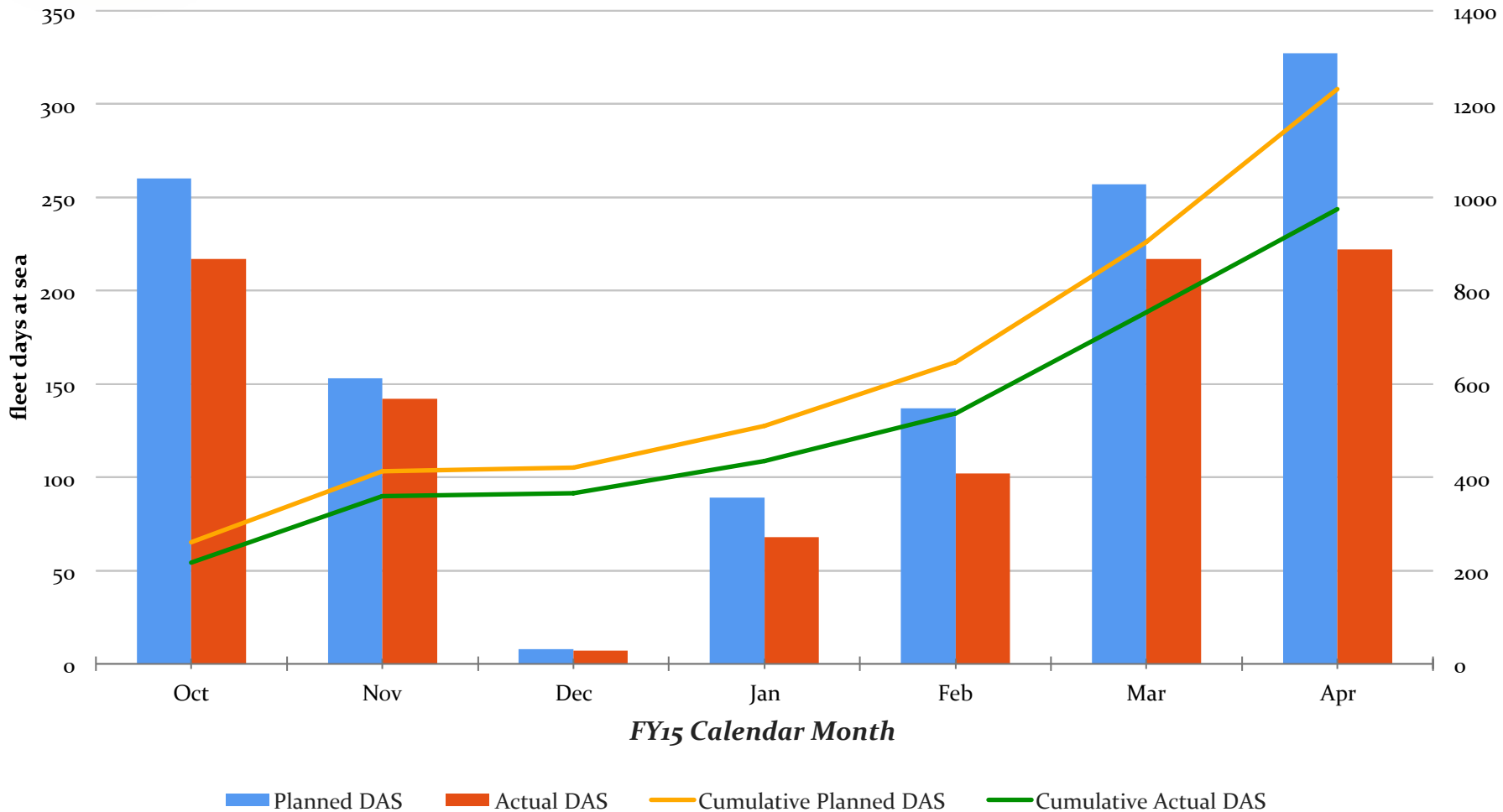


# FY2015 Fleet Allocation Plan

- 3,135 Days at Sea / 3,695 Operating Days
- *Okeanos Explorer* – Deploying to the Pacific Ocean May 2015, Central and Western Pacific Exploration
- *Ronald H. Brown* – P16N Clivar ongoing and 3 TAO Cruises
- *Fairweather and Rainier* – Hydrographic Survey of the Arctic
- NOAA Fisheries (stock assessments and protected species) surveys – 1508 DAS
- 30 DAS for EPA Ocean Dumping Site Surveys on *Nancy Foster* to increase utilization
- Charters – OMAO funding \$3.6M to meet OAR mission requirements and \$1.5M to meet NWS/TAO mission requirements



# FY15 Omnibus FAP Planned vs Actual DAS





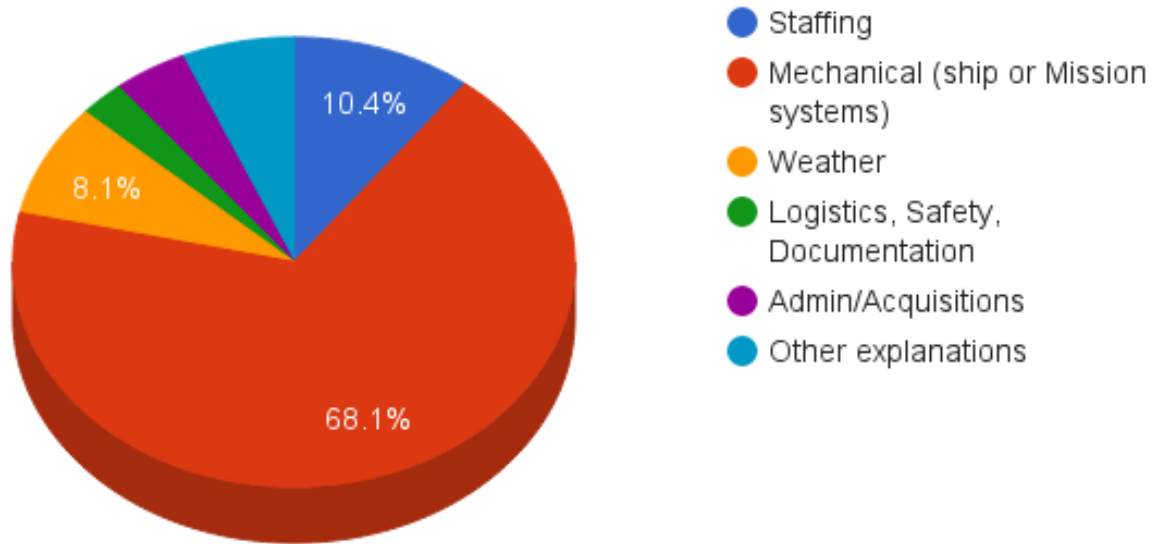
# Execution Challenges

- Wage Mariner Staffing – Retaining Qualified Engineers
  - ABC and Blue/Gold Pilot Programs
  - Day Working Pay implemented for all ships
  - 60/60 and 90/90 rotations for Relief Pool
  
- Downtime due to unscheduled maintenance – Progressive Maintenance Plan
  
- FSV *Reuben Lasker* harmonics issue – delayed operations



# FY2015 YTD Variance for Lost DAS

## Year to Date Variance







# NOAA – UNOLS Partnership

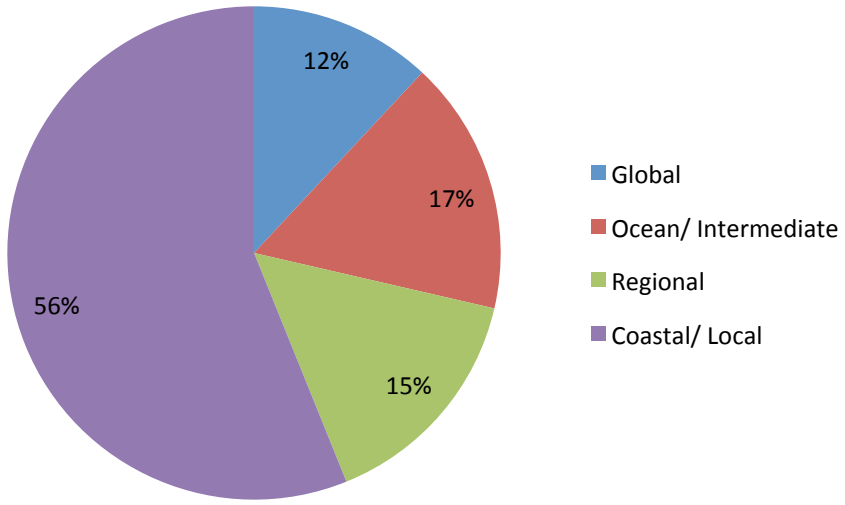
- Wire/Winch/Van Pool
- NOAA Engineer (RL – CME) sailed on UNOLS vessel to meet USCG licensing requirements
- UNOLS Ships utilizing NOAA Piers
- INMARTECH – November 2014
- RVOC – April 2015
- IWG-FI
- Collaborative Projects



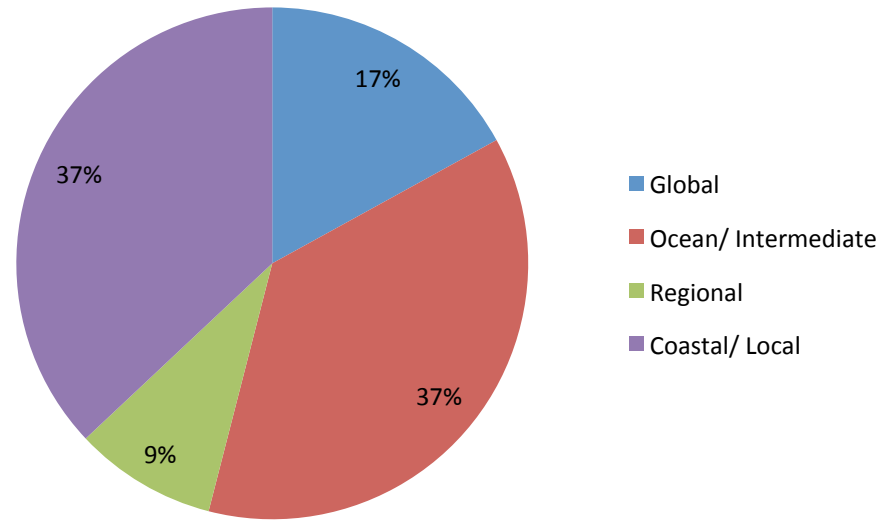


# UNOLS – NOAA Funded Days at Sea

**CY2014 NOAA Funded/  
UNOLS Charters**



**CY2015 NOAA Funded/  
UNOLS Charters**





# Future Initiatives

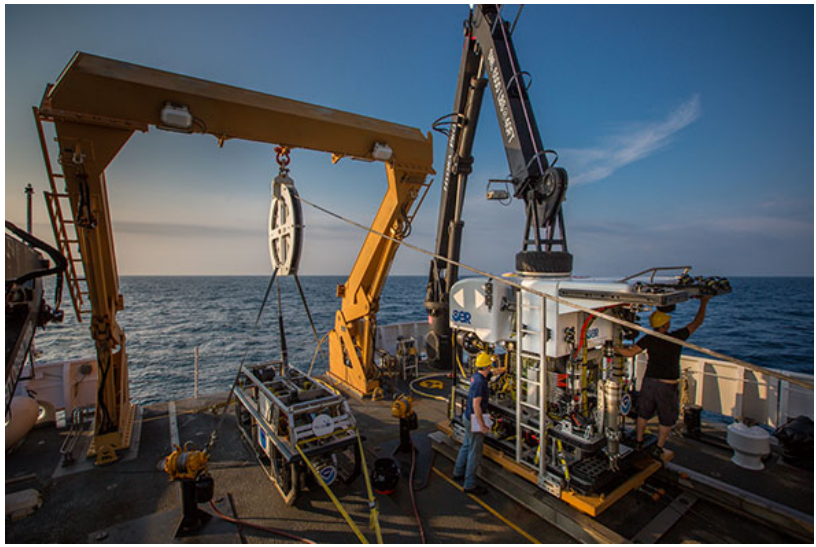
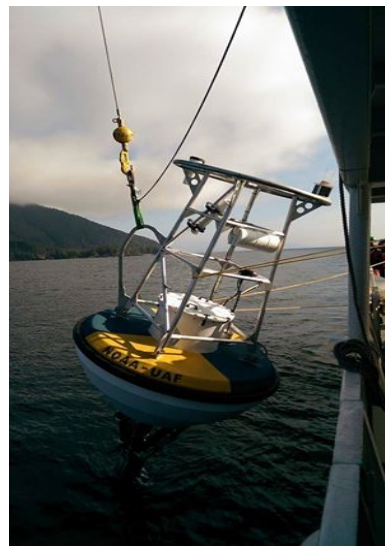
- Fleet Composition Plan 2012 – 2027 under review
- IAA With NAVSEA to support design of NOAA OSV (AGOR)
- Fleet Information System
  - Generation of Requirements complete
  - Focusing on Staffing Module First
  - COTS products likely to provide the lowest risk/best value
- 100% Utilization of fleet by FY2017

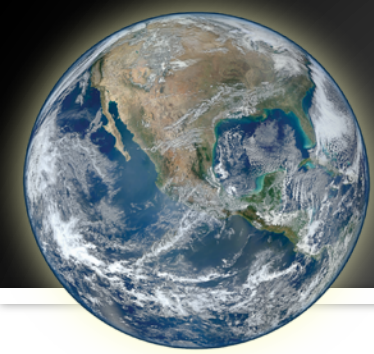




# Questions?

- LCDR Tracy Miller is our NOAA/UNOLS POC: 301-713-7661





# Back-up



# Ocean Survey Vessel (OSV)

- OSV Will be a two vessel ocean class of vessels identified as necessary to replace and enhance NOAA fleet capability
- Design leverages the U.S. Navy's Auxiliary General Purpose Oceanographic Research (AGOR) vessel requirements
  - AGOR 27 and 28 under construction by Dakota Creek Industries (Anacortes, WA) for use by WHOI & Scripps
  - Provides 90% design solution
  - Reduces costs and accelerates the acquisition timelines
  - Interagency Agreement signed with the Navy in May 2014





# OSV Current Status

- NOAA OSV Integrated Product Team (IPT) intimately involved
  - Top Level Requirements (TLR) completed by NOAA IPT and signed by OMAO in Sep 2014
  - Currently engaged in review of OSV system specifications
  
- FY16 budget includes funding for first vessel
  
- Timelines
  - Issue RFP Late Q3/Q4 FY15
  - Preliminary Contract Design Award FY16
  - Down Selection and award option for lead ship FY17
  - Start lead ship construction FY18
  - Deliver FY20