

Three Expeditions

Dorado Outcrop: December 2013

Jason and Sentry

Juan de Fuca CORKS: August 2014

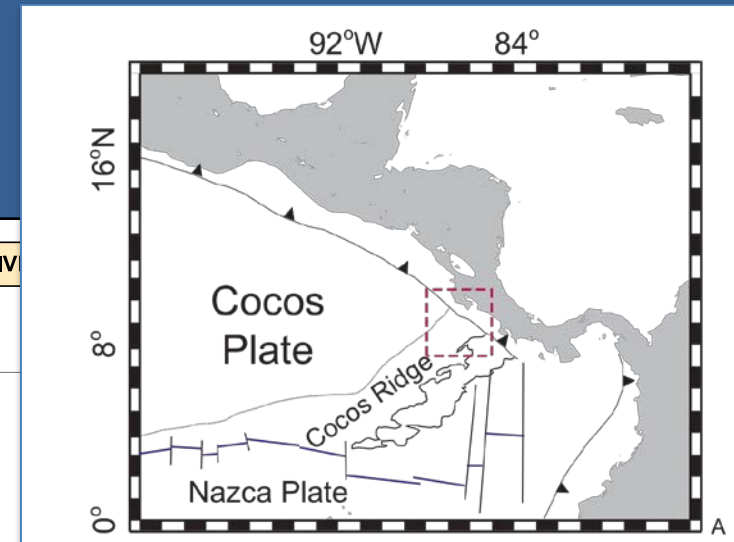
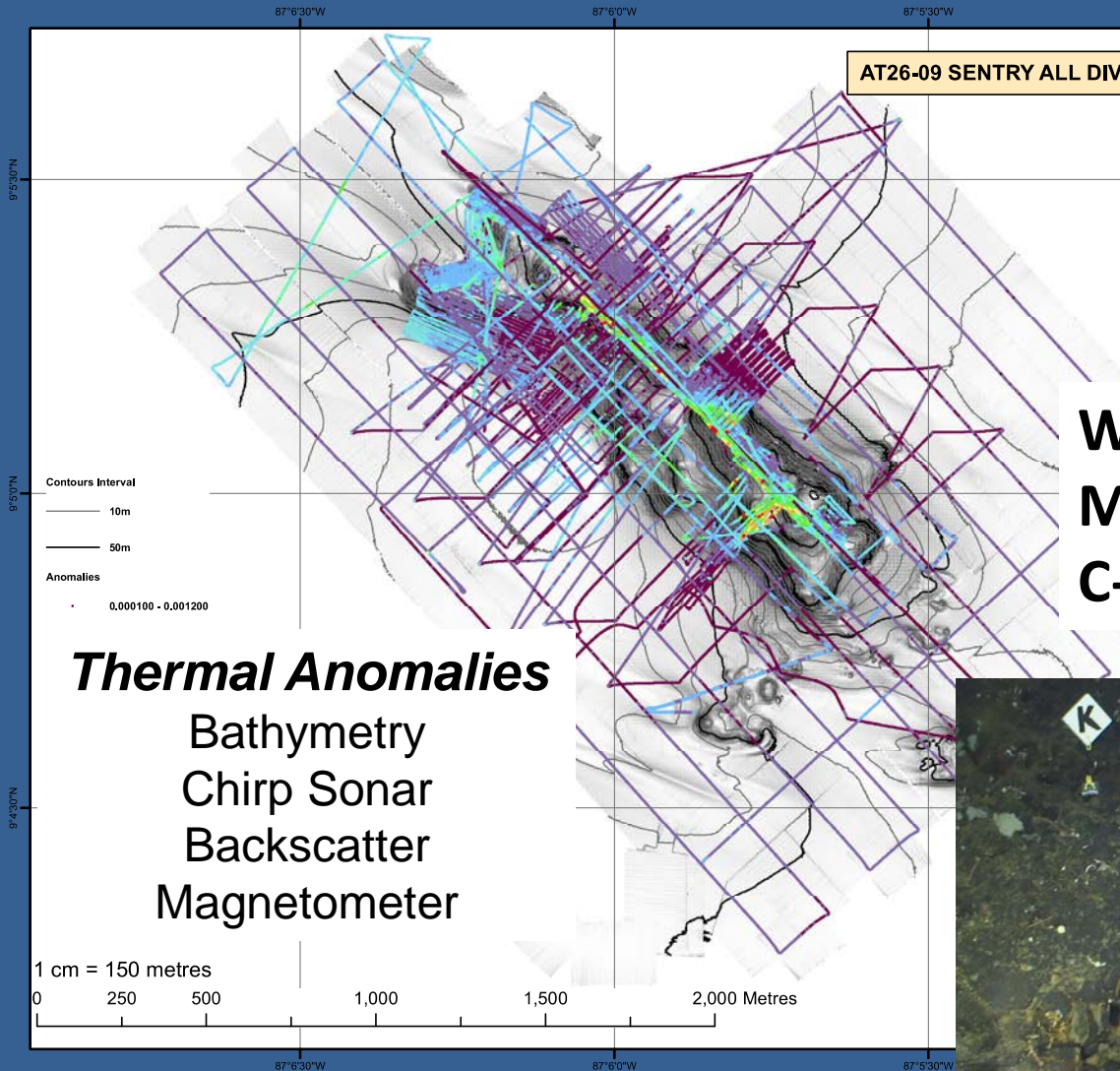
Alvin

Dorado Outcrop: December 2014

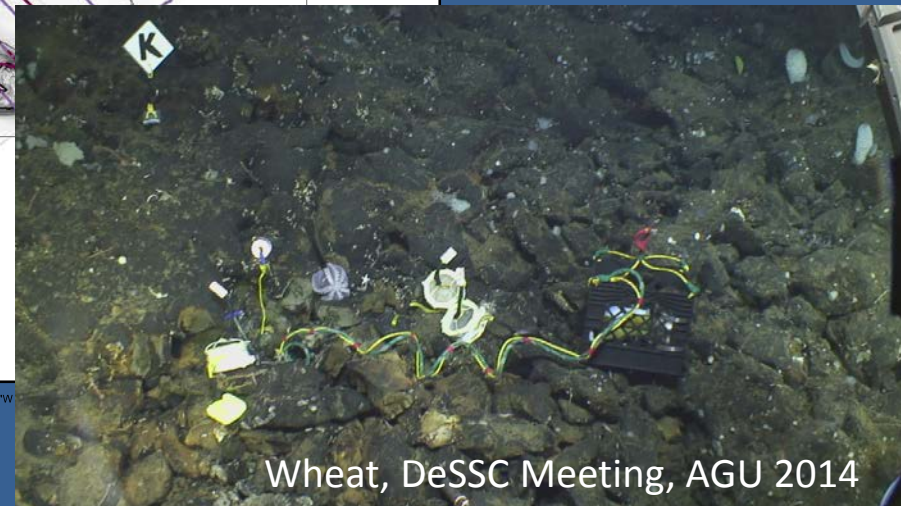
Alvin

Dorado Outcrop 2013

Low Temperature Hydrothermal Venting on 23 Ma Crust

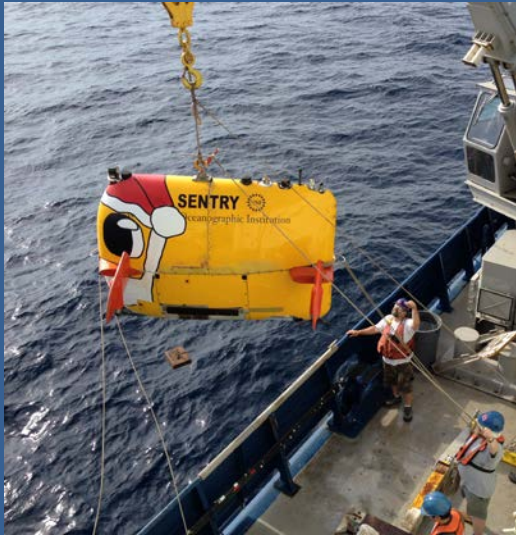


Wheat, Fisher, Hulme – NSF
McManus, Orcutt – C-DEBI
C-DEBI Postdoctoral Fellows



Dorado Outcrop 2013

December 7-23



Strengths

Model for deploying Sentry while Jason is working on the bottom. Sentry was deployed for 50% of the time and Jason was deployed for 79% of the time we were at Dorado. We had two 100-hour-long dives.

Elevators take 4 to 5 hrs, but that is better than a 12 hr turnaround



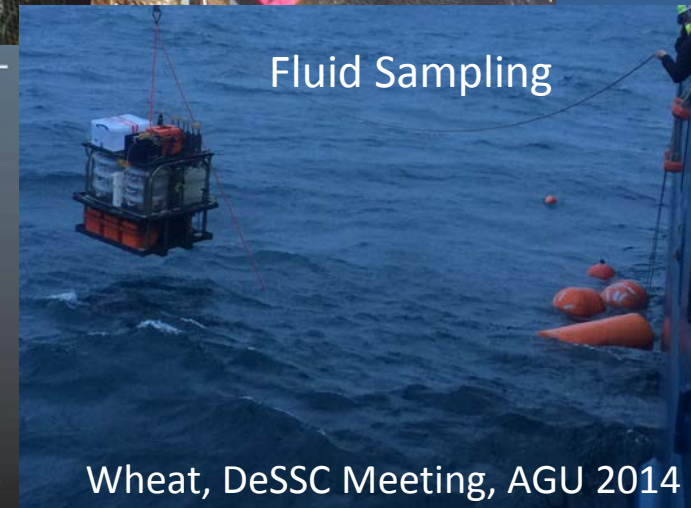
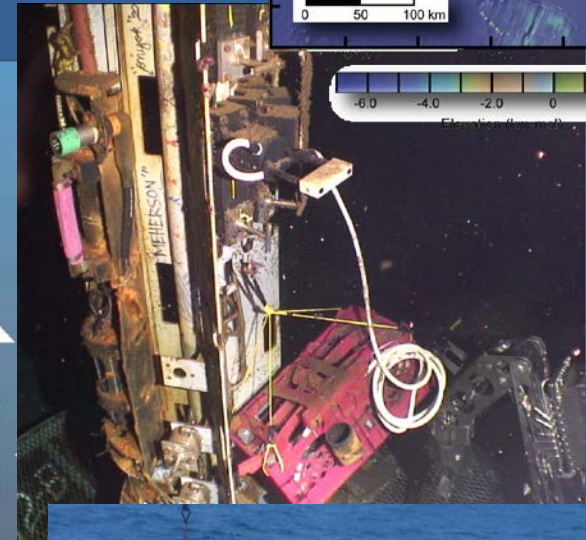
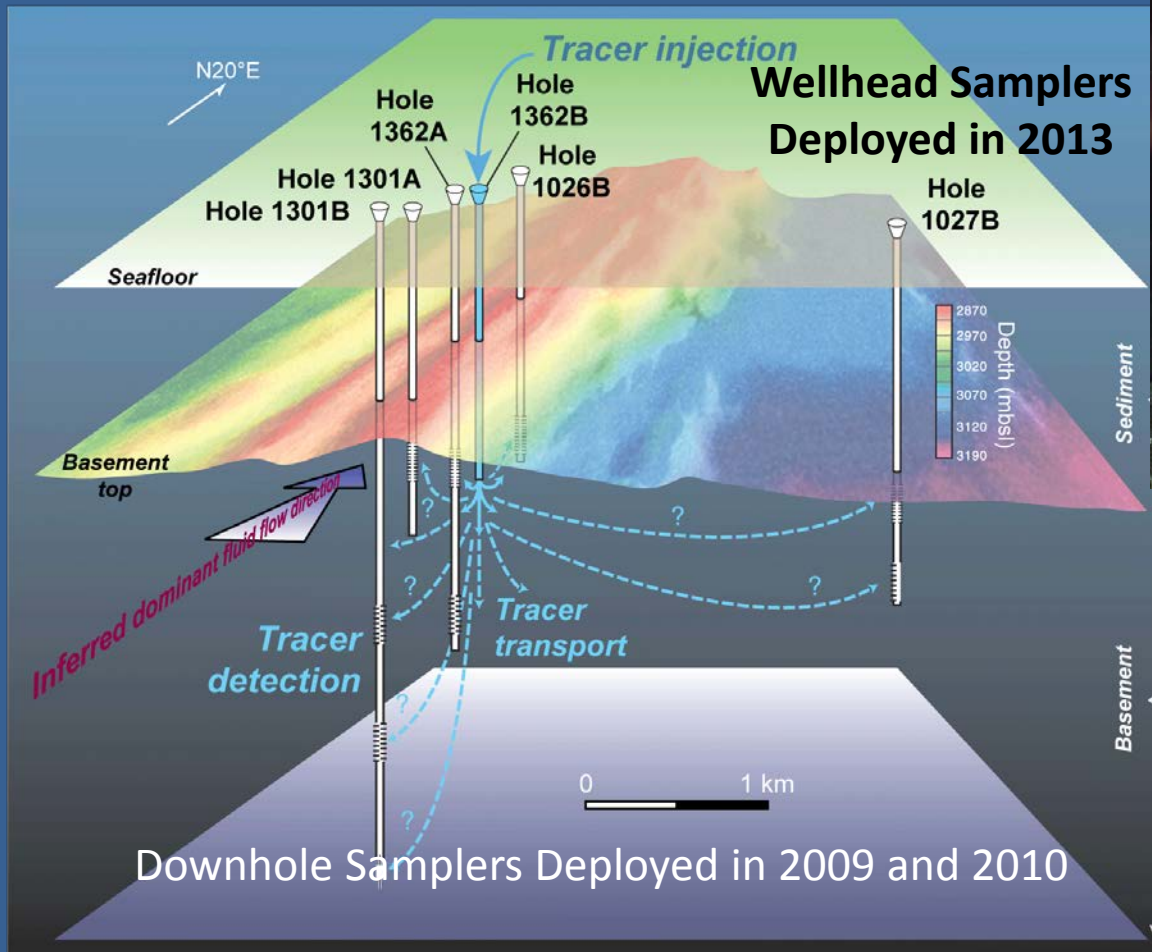
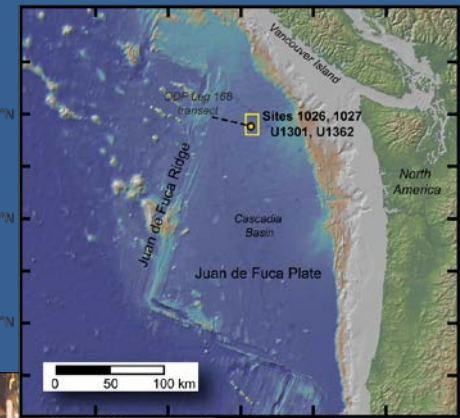
Issues

Liability for non UNOLS institutions
Not all data from Jason have X,Y, Z, Time (CTD)
Digital files are a necessity (Not DVDs)
Sentry is not a “mature” vehicle like Jason
Products are slow – not as advertised
Format of the chirp sonar data was unreadable
GPS syncs

Juan de Fuca CORKS

August 10-24

Wheat, Fisher, Becker, Cowen, Clark, and Edwards – NSF
Completing single- and cross-hole hydrogeologic
and microbial experiments: Juan de Fuca Flank



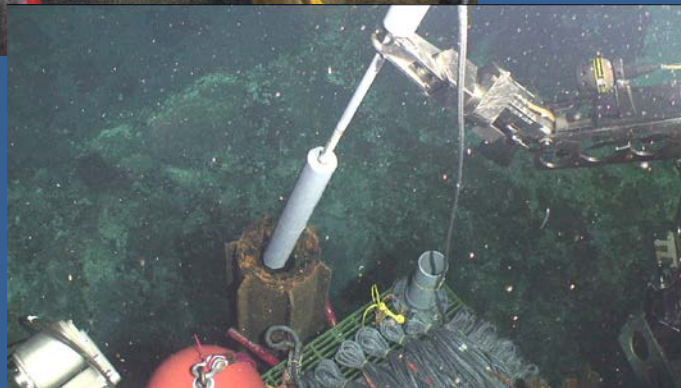
Juan de Fuca CORKS

August 10-24



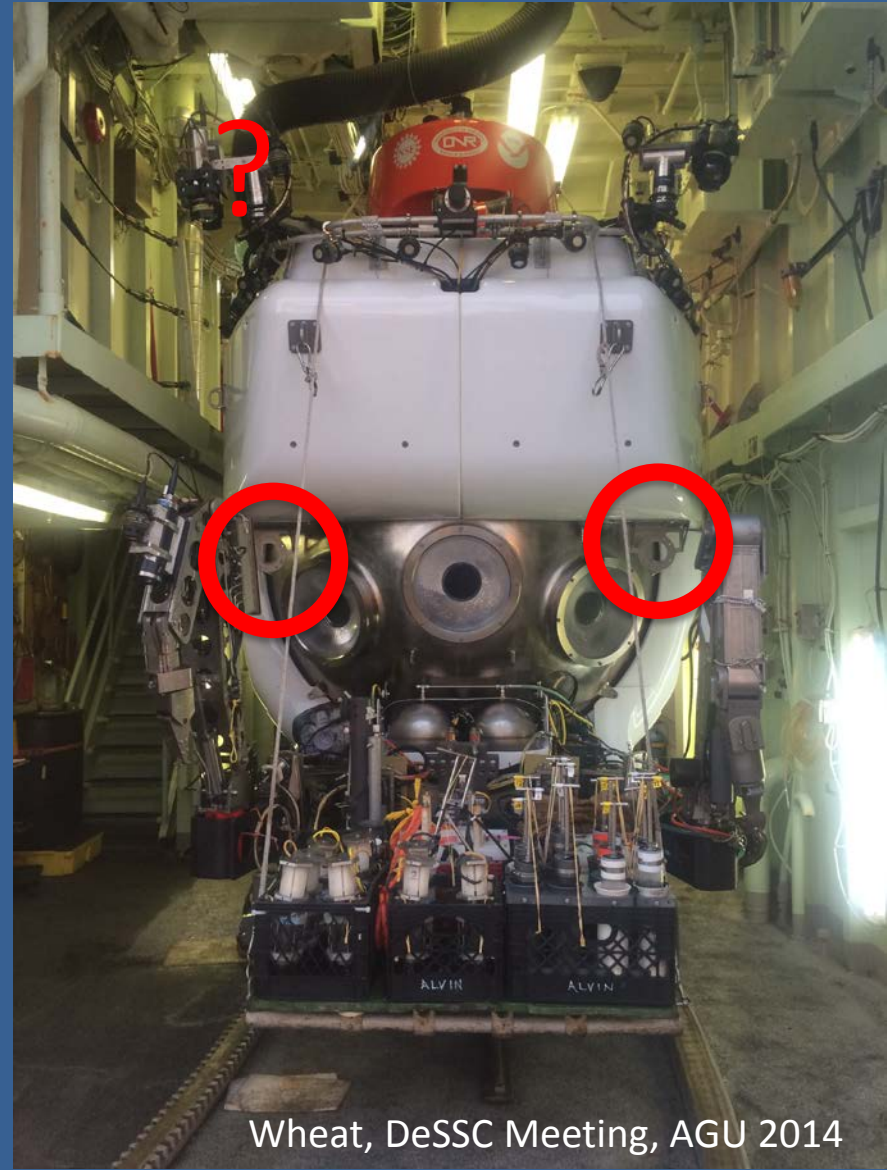
Very Successful 11 Dives
Full Operations 8-5, No Battery Issues
Atlantis and Alvin Crews are Fabulous

Issues
Need time stamps on all products
(video files)



Dorado Outcrop 2014

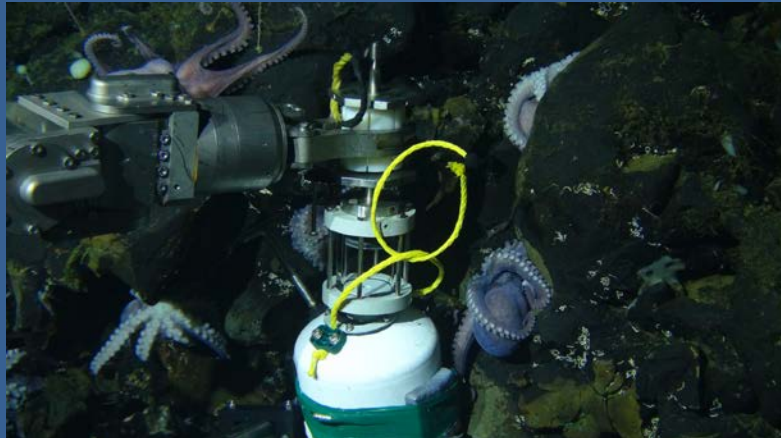
November 30- December 12



Wheat, DeSSC Meeting, AGU 2014

Dorado Outcrop 2014

November 30- December 12



Very Successful 10 Dives

Full Operations 8-5, No Battery Issues

Atlantis and Alvin Crews are Fabulous

Issues

Lost Time for Weather (1 Hr, 30 min)

Lost Time to Look for Thruster (2 hrs)

Lost Dive Due to Illness (Half of Crew)

Bubble Cameras Removed - Safety

One Brow Camera (Water- Hit by Avon)

Need a Fold-up Table for Computer

Need to Upgrade Video Overlay

Need to Upgrade Navigation (Ask Jason)

Need Stbd Manip Camera on Video for Scientists

Put Camera Video Display on a Tablet (wifi)

Need a Faster Shutter Speed on the in Sub Cameras

Need CTD, Back up Cameras and Housings

ALL DATA SHOULD HAVE STANDARD METADATA