



Ocean Exploration
and Research

NOAA Office of Ocean Exploration and Research

Alan P. Leonardi

Telepresence-enabled Exploration: FY15 Plans

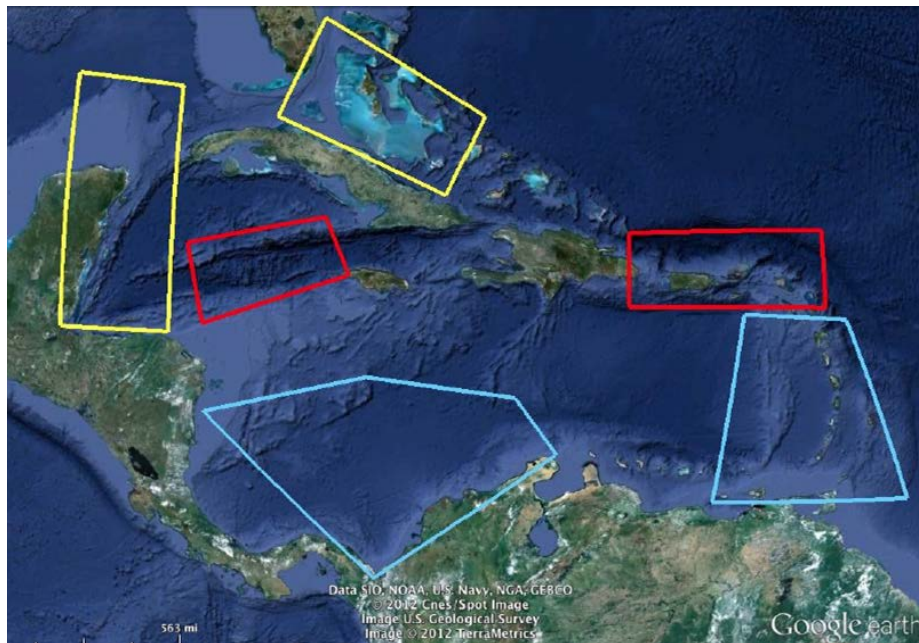
Proposed FY15 Schedule

- **February**: Ship Shakedown & Patch Test.
- **February – April**: Caribbean Exploration (3 cruise legs)
- **May – June**: Tropical Exploration (2 cruise legs).
Continuously collect underway mapping data. Potential for surveys of opportunity.
- **July – September**: Hawaiian Archipelago Exploration (3 cruise legs)

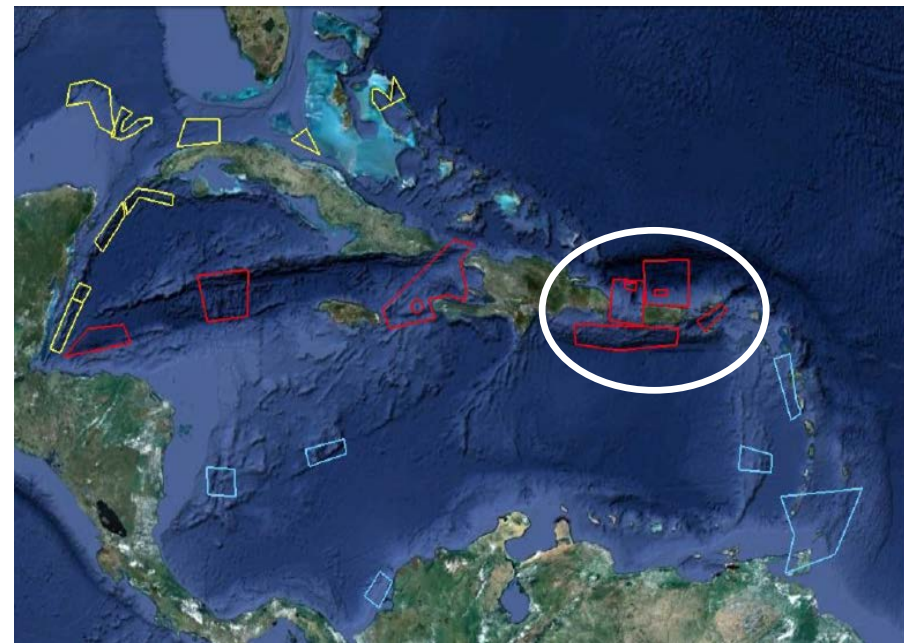
Telepresence-enabled Exploration: FY15 Caribbean Exploration

2012 Caribbean Workshop

White Papers & Regions

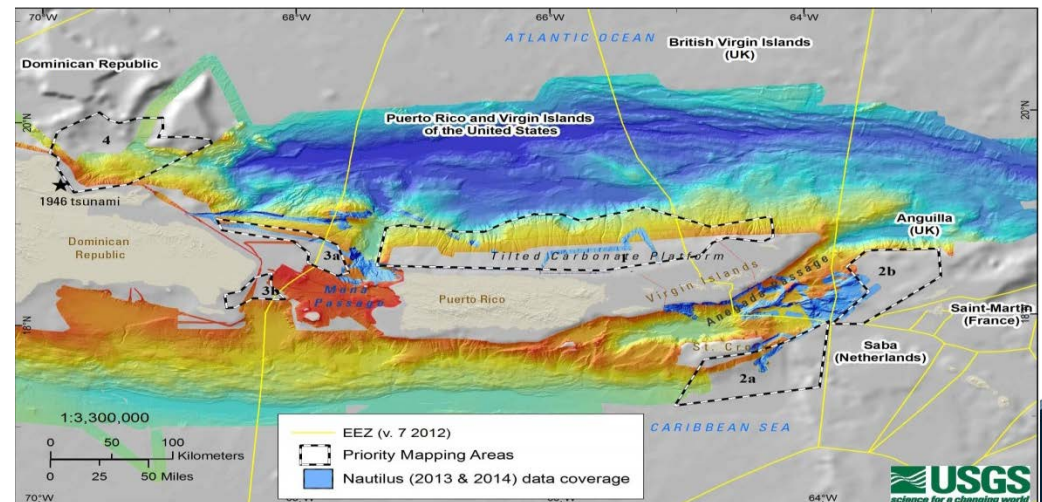


20 high priority areas



Telepresence-enabled Exploration: FY15 Plans

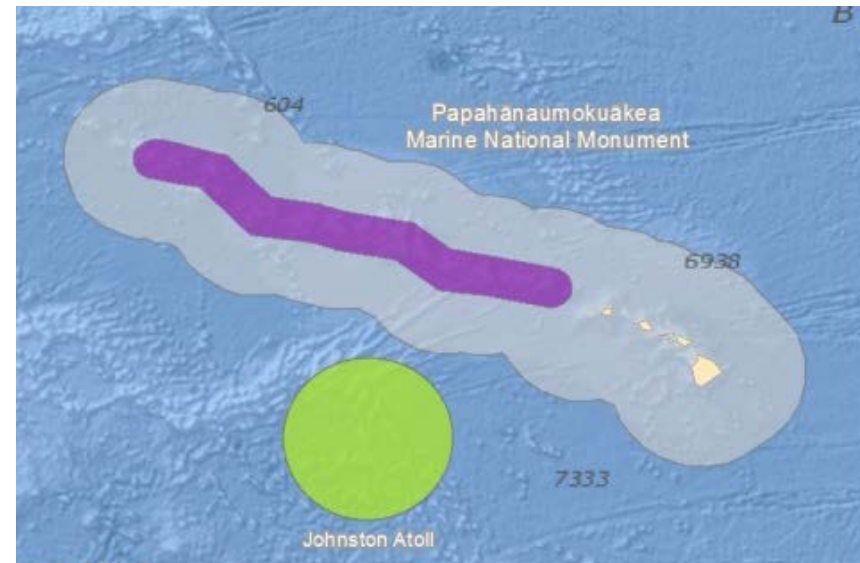
- Puerto Rico Trench, Seamounts, & Canyons
- 3 integrated cruise legs, March to April (3 Mapping, 1 ROV)
- Expand on 2002 and 2003 OE and 2014 Nautilus efforts
- Survey of Opportunity requests
- Ship and shore-side science



Telepresence-enabled Exploration: FY15 Plans

- Three integrated legs from July to September
 - 3 mapping, 2 with ROV
- Focus on vicinity of Papahānaumokuākea MNM, Hawaiian Islands Humpback Whale NMS, and possibly Johnston Atoll
- Expand on recent Falkor work
- Ship and shore-side science

OceanExplorer.NOAA.gov



QUESTIONS?

