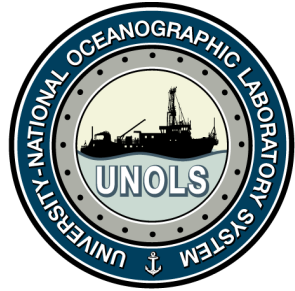




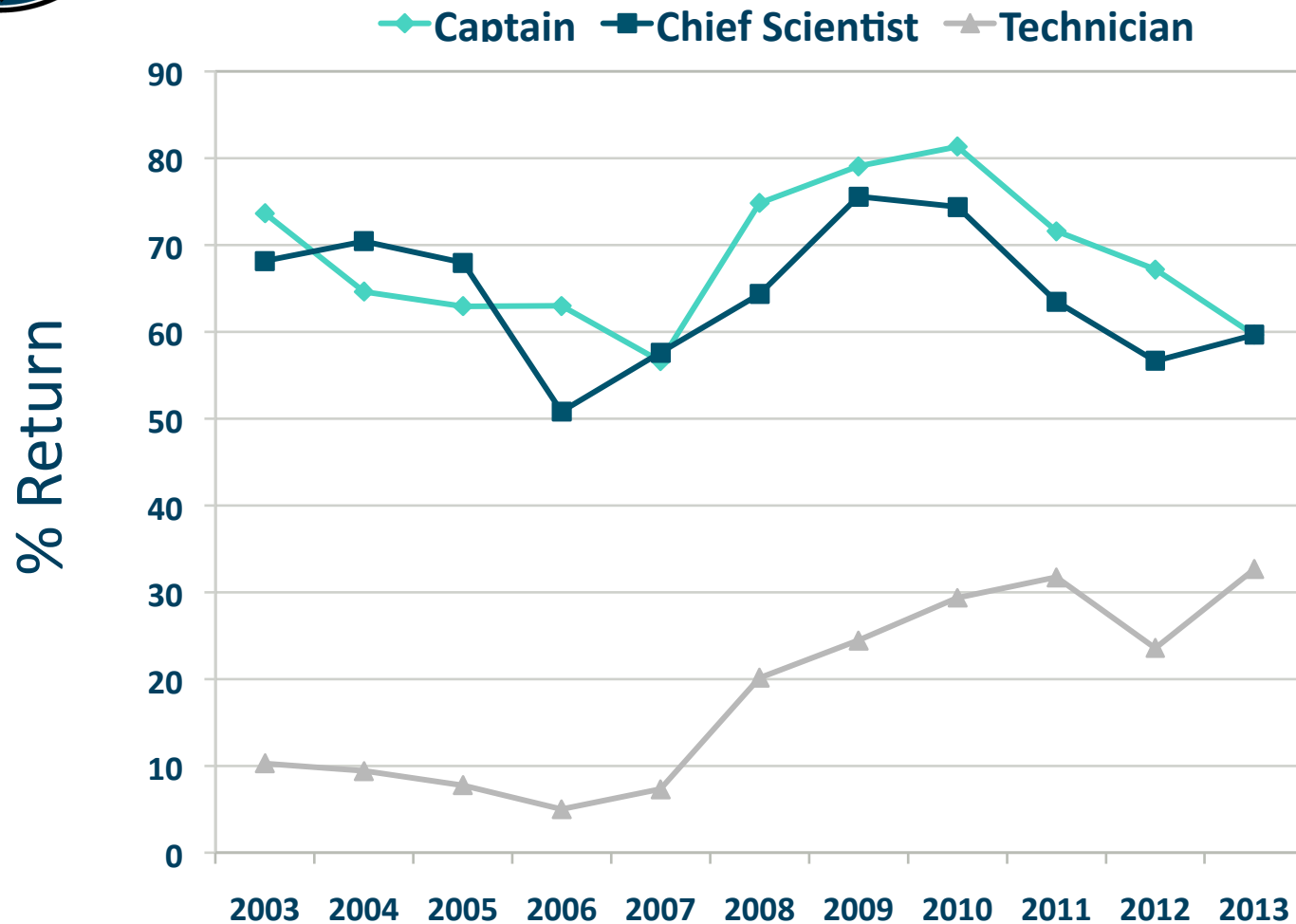
# Summary of 2013 Post Cruise Assessment and Safety Reports

2014 UNOLS Annual  
Meeting



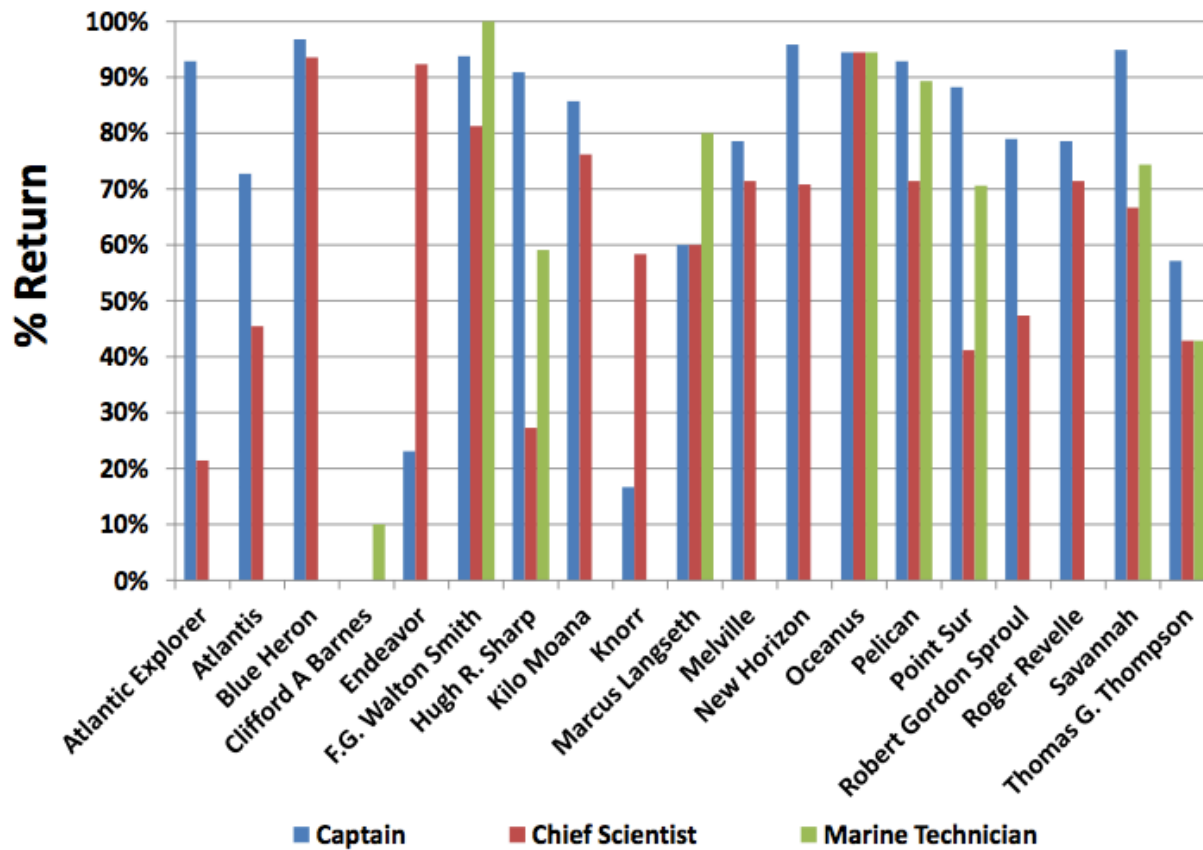


# Fleet Percent Return for Post Cruise Assessments 2003 - 2013





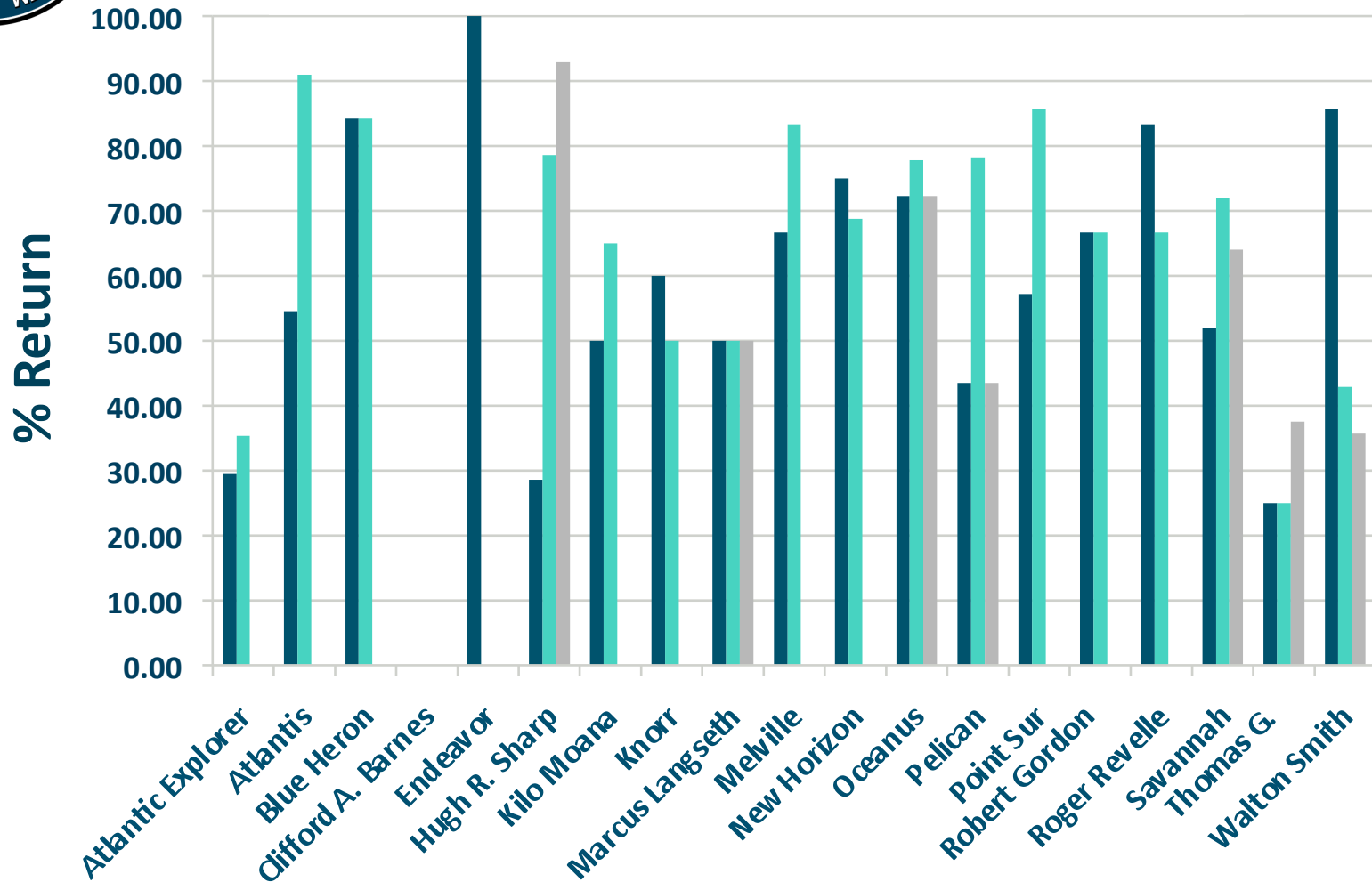
## % PCAR Returns for 2013





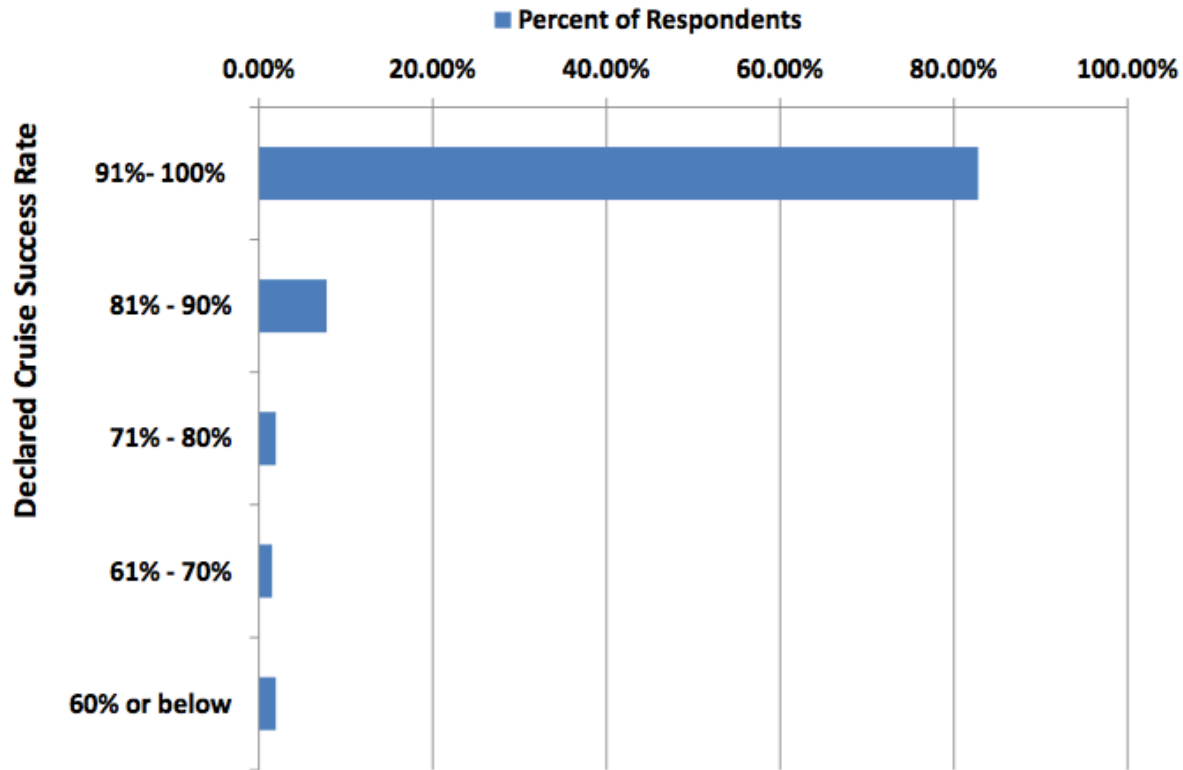
## % PCAR Returns for 2014 By Ship (so far)

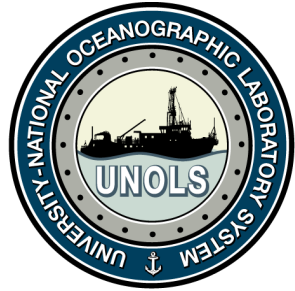
■ Chief Scientist   ■ Captain   ■ Marine Technician





### To what extent were the planned science objectives of this cruise met?





# Average PCAR Ratings (1-5) for 2013

Category	Rating
Level of Safety	4.82
Officers, Crew, and Vessel Operation	4.79
Pre-Cruise Activities and Shore Support	4.77
Science Party	4.75
Scheduling	4.70
Scientific Equipment and Marine Technicians	4.68
Research Vessel and Installed Equipment	4.57



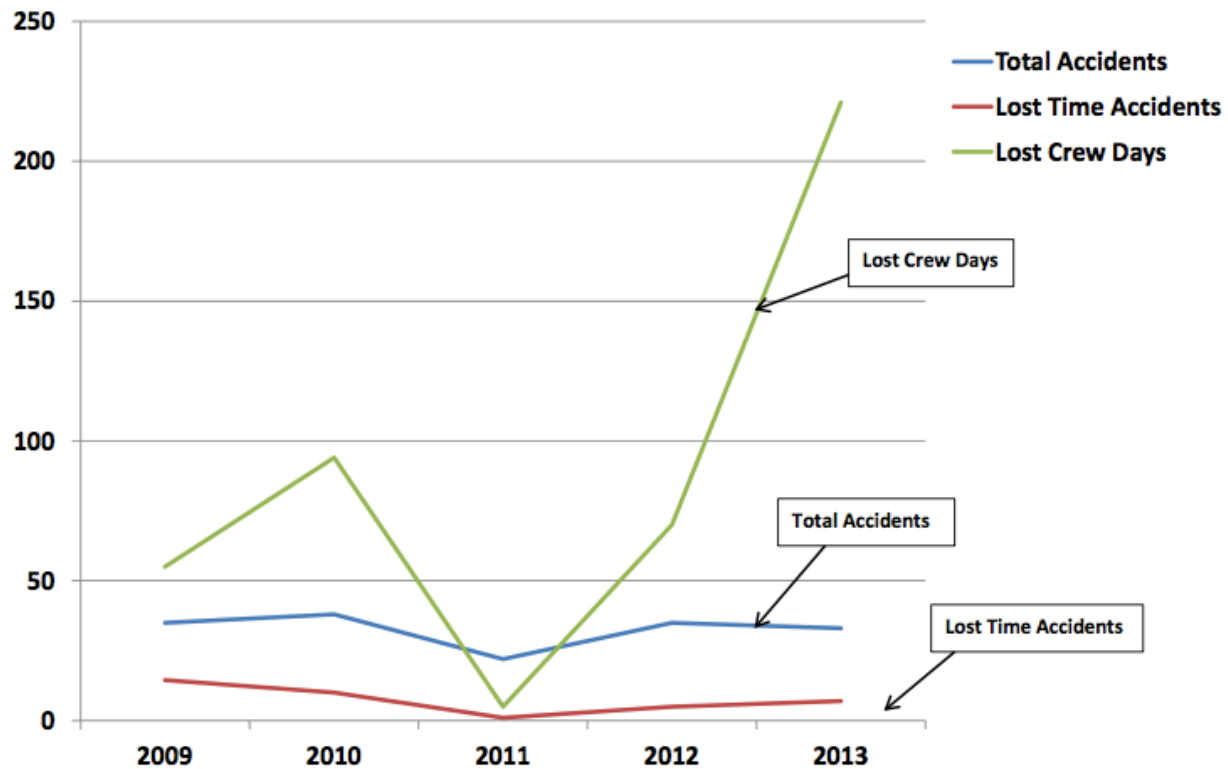
# Submission Status of 2013 Safety Reports

2014 Safety Report  
 Submittal Rate  
 72% so far

2013 RVOC Safety Statistic Reports Received				
Click on the link below to complete reports				
<a href="http://www.unols.org/committees/rvoc/rvoc_only/safetyrept.asp">http://www.unols.org/committees/rvoc/rvoc_only/safetyrept.asp</a>				
Quarter Reported	2013-1st	2013-2nd	2013-3rd	2013-4th
Atlantic Explorer	X	X	X	X
Atlantis	X	X	X	X
Blue Heron	X	X	X	X
Clifford A. Barnes		X		X
Endeavor	X	X	X	X
Hugh R. Sharp	X	X	X	X
Kilo Moana	X	X	X	X
Knorr	X	X	X	X
Marcus Langseth	X	X	X	X
Melville	X	X	X	X
New Horizon	X	X	X	X
Oceanus	X	X	X	X
Pelican	X	X		X
Point Sur	X	X	X	X
Robert Gordon Sproul	X	X	X	X
Roger Revelle	X	X	X	X
Savannah	X	X	X	X
Thomas G. Thompson		X		X
Walton Smith	X	X	X	X
<b>Total Ships Reported</b>	<b>17</b>	<b>19</b>	<b>16</b>	<b>19</b>
<b>Total Ships</b>	<b>19</b>	<b>19</b>	<b>19</b>	<b>19</b>
<b>% of Ships Reported</b>	<b>89%</b>	<b>100%</b>	<b>84%</b>	<b>100%</b>



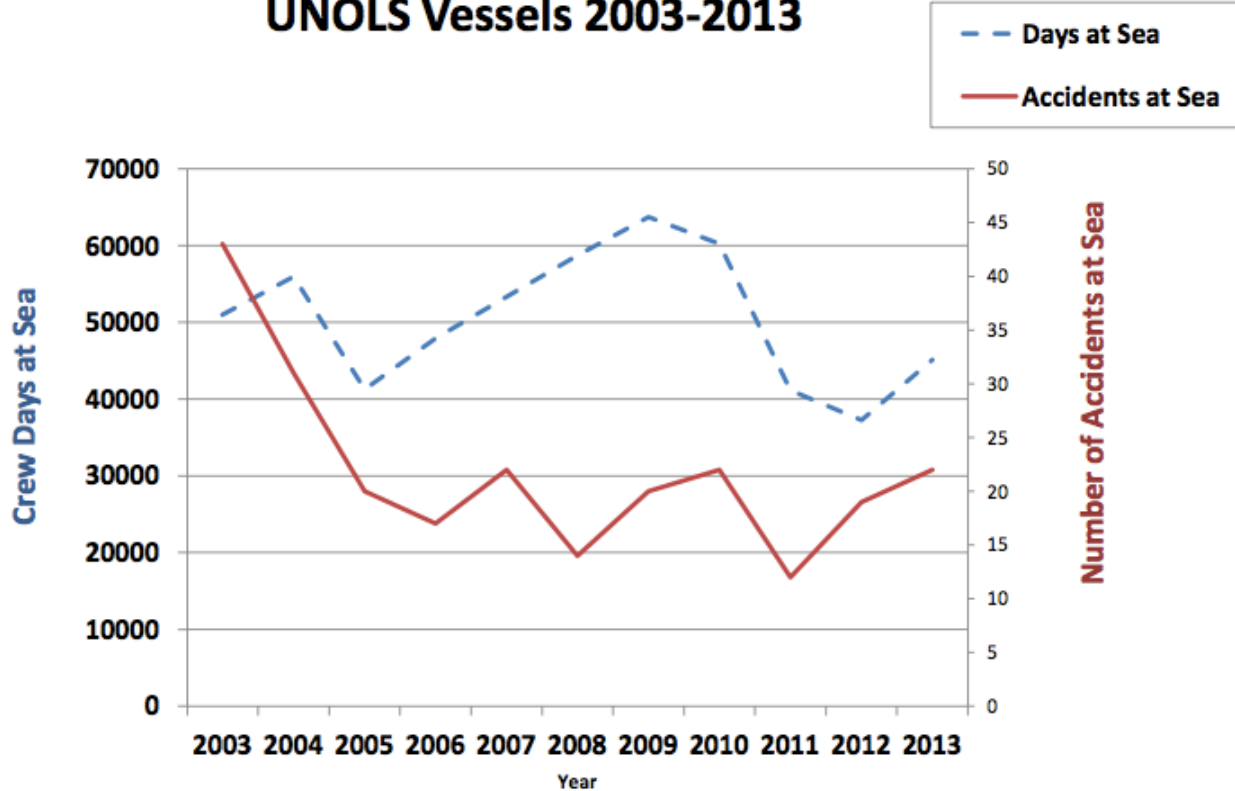
### UNOLS Fleet 2007 – 2013 Total Accidents and Lost Crew Days







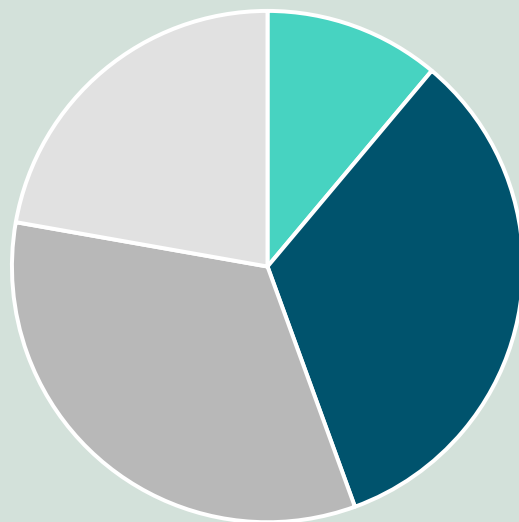
## Total Days at Sea and Total Accidents at Sea UNOLS Vessels 2003-2013





# New Safety Statistics Form

- Q 3 (July 1 – September 30) 2014
  - 9 Total Accidents Reported on 11 Ships, 1 Resulted in Lost Time



- Slips, Fall, Trips
- Contact w/Objects, Equipment
- Overexertion/Bodily Reaction
- Illness including disease and heart conditions

Type of Accidents