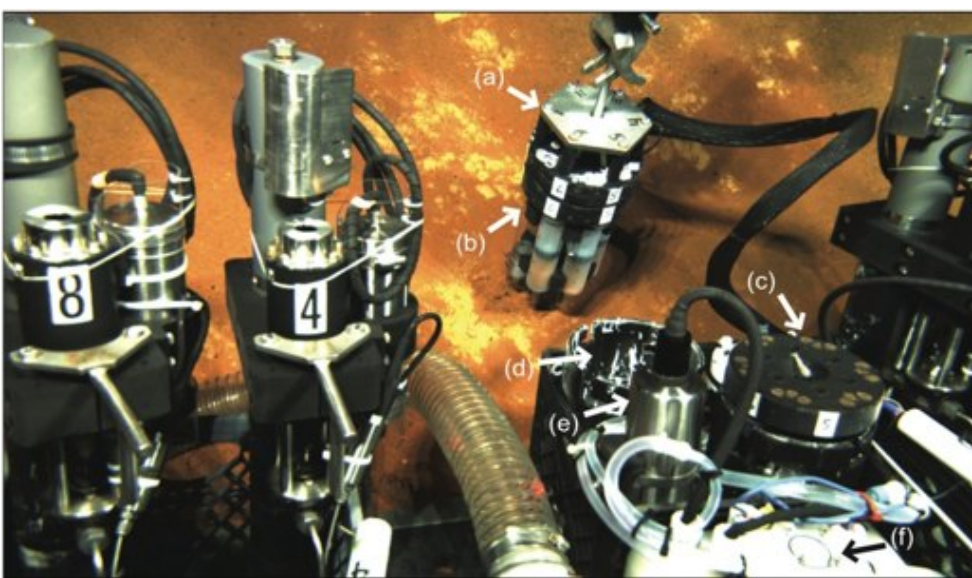
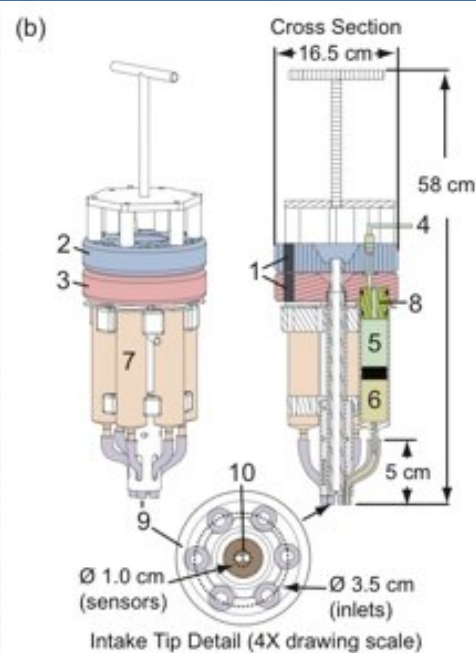
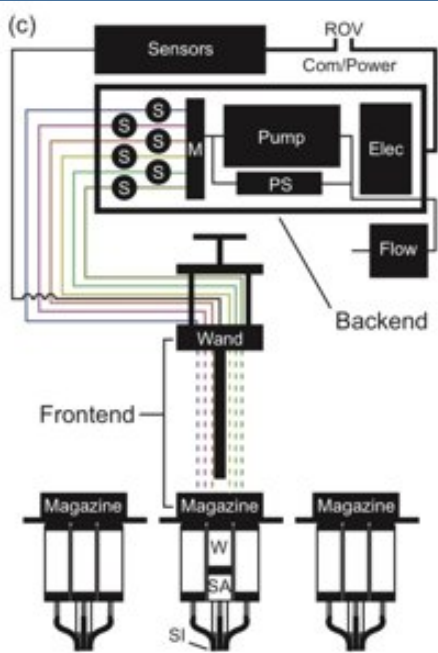


# Breier Mat Sampler





# Breier Mat Sampler



Breier Maintained and Provided

NDSF?

Case A (NSF Funded)

	Mat Sampler	Mat Sampler
instrument		
one time upfront cost	already paid	35110 See note 3 below
Continuing Costs Per Mob:		
Breier salary	0	0
service days per mob	10	4 See notes 1&2 below
fully loaded service day rate	1000	1000
<b>service days cost per mob</b>	<b>10000</b>	<b>4000</b>
Laboratory Supplies	750	750
management days per mob	5	3?
fully loaded management day rate	1000	1000
management days cost per mob	5000	3000
material cost	58648	58648
maintenance cost	5864.8	5864.8
dayrate basis days	60	60
maintenance day rate	97.75	97.75
days used per request (30 day example)	30	30
maintenance cost this mob	2932.4	2932.4
training days	not included	not included
training day rate	1000	1000
training days	not included	not included
total per mob	18682.4	10682.4

shipping not included

Jason shipping

Note 1: maybe as little as 2 once familiar, definite tasks per precruise checkout - drain oil filled housing, check solenoids for corrosion, check internal connectors, orings, etc, refill oil, check operation, replace worn parts as needed

Note 2: to date in four cruises, the required maintenance has been to replace the solenoids once and to tighten the connector internal nuts once - I would anticipate a good cleaning soon.

Note 3: Breier donates > \$18K in unique Mat Sampler components; but additional cost is necessary to make independent from Breier Lab. This is the cost of the SUPR pump, jbox, and related components - including 1 spare Mclane pump (12000 - but this maybe overkill, a spare motor and pump parts might be significantly less) - this also includes \$3000 to make a custom quiver box (not strictly necessary but would be good for space efficiency)



# DSL Syringe Alternative

