

NOAA ASSET PASS & Fleet Information System



LCDR Tracy Miller
NOAA/OMAO Operations



Office of Marine and Aviation Operations

Prioritization, Allocation, and Scheduling System

- NOAA business process initiative in its second year of use
- Online system organizes ship time requests, NOAA line office prioritization of projects, budget requirements (per ship, project, and) and scheduling
- Rolling three fiscal year database of certified projects
- Highest level of transparency in the scheduling process between PI's, vessel coordinators, fleet schedulers, marine centers, and ship commands.
- Improves efficiency and accuracy of coordination and communications
- Online tool for various budgeting scenarios in hard budget years
- Line office collaboration, ie. opportunities for piggyback projects



Sea Time Requests

- Digital Version of NOAA
Shiptime request form 57-11
- Currently 4 types of vessels
 - NOAA
 - UNOLS
 - (Non-NOAA) Federal Charter
 - Non-Federal Charter



Edit Ship Time Request Status

Current Status: Submitted to OU VC

Status Comments:
(read-only) Edited date of Request

Edit Ship Time Request Record

Reload

(If there is no 'Save' button, it means you are not allowed to edit this Request.)

Bookmarks

[* Indicates required fields](#)[Red bookmarks are the key fields](#)[Form Instructions](#)[1 Requested Fiscal Year *](#)[2 Originating Office *](#)[3 Date of Request *](#)[4 ReCap Activity](#)[5 Project Name *](#)[6 Project Purpose *](#)[7 Objective Based Metrics *](#)[8 NOAA Goals *](#)[9 NOAA Objectives](#)[10 Science Field Category](#)[11 NSF R & D Category](#)[12 Impact Statement](#)[13 Preferred Vessel Operator *](#)[14 Preferred NOAA Vessel *](#)[15 Justify NOAA Preference *](#)[16A Foreign Port Calls *](#)[16B Domestic Licenses *](#)[17A Project Area *](#)[17B Project Area Coordinates *](#)[18 Max & Min Sea Day Req. *](#)[19A Earliest Possible Start Date *](#)[19B Latest Possible End Date *](#)[20 Project Priority](#)[21 Piggyback Suggestion](#)[22 Starting Port & Transit Days *](#)[23 Intermediate Port Calls *](#)[24 Ending Port & Transit Days *](#)[25 Berth Requirements *](#)


NOAA Form 57-11-01

SHIP TIME REQUEST

U.S. DEPARTMENT OF COMMERCE

* indicates required fields.

Link to Validated CORL DAS Requirement(s):

1. * Requested Fiscal Year: 2015 ▼ 2. * Originating Office: OAR ▼ 3. * Date of Request: 2014/02/13  (yyyy/mm/dd)

4. ReCap Activity: Produce decadal inventories of global ocean carbon and estimates of coastal margin/continental shelf carbon cycling ▼

5. * Project Name: (max 4000 chars)

2015 CLIVAR/CO2 Repeat Hydrography Program Survey Cruise P16N

5. Project Name: (short) Repeat Hydrography P16N

6. * Project Purpose: (max 4000 chars)

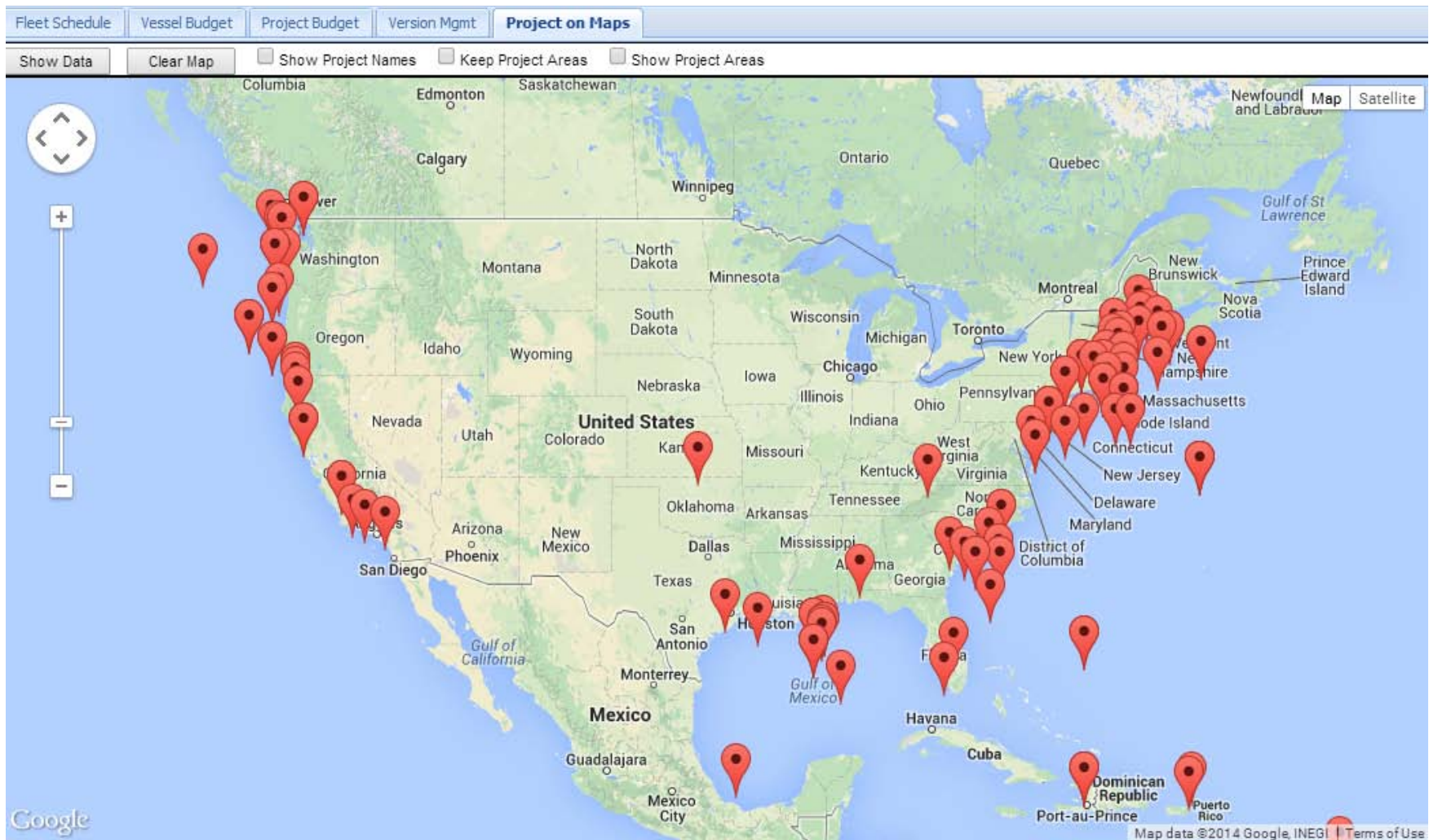
This cruise is part of the decadal re-occupation of select NOAA hydrographic transects to determine natural and human-caused changes in chemical and physical properties in the Pacific Ocean that will focus on the oceanic carbon cycle and penetration of anthropogenic CO2 into the ocean. The work is in direct support of the United States Carbon Cycle Science Program and Climate Variability and Prediction (CLIVAR) Program that necessitate systematic observations of the invasion of anthropogenic carbon dioxide (CO2) and geochemical tracers in the ocean superimposed on a variable natural background. This research is co-sponsored by NOAA and NSF.

7. * Objective Based Metrics: Measurable Accomplishments Planned - list with number required. (max 4000 chars)

CTD stations sampled - 125; Dissolved inorganic carbon and alkalinity samples collected and analyzed - 1800; New underway surface CO2, pH, and O2 measurements - 15,000; Intercalibration locations for various observing platforms - 2 moorings, plankton sampling and radioisotope studies.



Mapping Feature



Office of Marine and Aviation Operations

Prioritization

Project Prioritizer

Project Priorities

Budget & Cost

Load project records, then move (drag/drop) the project blocks to order them based on their priorities.
Use the [STOP] sign to separate projects with higher priorities from projects with lower priorities.

Fiscal Year: 2014 ▼ Level: Line Office ▼ Line Office: OAR ▼ Version: OAR LO REP's Pres Bud v3 - Primary Version ▼

Load Records

Save Priorities

☐ Enable 'Get Details'

More Actions: -- Action -- ▼

None

CPO

NSGO

OER

AOML

ESRL

GLERL

PMEL

OA

Total OAS Days Requested: 751 Total OAS Days Before 'STOP': 534 Total OAS Days After 'STOP': 217

1: Get Details Repeat Hydrography A16S (revised)	2: Get Details PIRATA Northeast Extension (PNE)	3: Get Details NTAS/MOVE: Northwest Tropical Atlantic Station/Meridional	4: Get Details EcoFOCI fall mooring cruise save	5: Get Details EcoFOCI spring mooring cruise	6: Get Details Western Boundary Time Series: Walton Smith cruises	7: Get Details Consortium on the Ocean's Role on Climate (CORC)	8: Get Details Exploration, NE Canyons & Seamounts (ROV/Manning)	9: Get Details WHOTS: WHOI Hawaii Ocean Timeseries Station	10: Get Details Stratus: Stratus Ocean Reference Station
11: Get Details Southwest Atlantic Meridional Overturning Circulation (SAM)	12: Get Details New Millennium Observatory (NeMO)	13: Get Details Exploration, East Coast (mapping) Leg I	14: Get Details South Florida Ecosystem Restoration Research	15: Get Details PMEL Ocean Climate Stations Project - KEO mooring	16: Get Details RUSALCA, Russian American Long-term Census of the Arctic	17: Get Details EcoFOCI Arctic cruise v.2	18: Get Details California Current Ecosystem Moorings (CCE1)	19: Get Details California Current Ecosystem Moorings (CCE2)	20: Get Details Exploration, East Coast (mapping) Leg II
21: Get Details Deep Argo	22: Get Details Coral Reef Ecosystem Research (CRER): Interdisciplinary	23: Get Details Western Atlantic Climate Study II (WACS II)	24: Get Details Ocean Acidification: Natural Laboratories in the Northern Marianas	25: Get Details Exploration, NE Seamounts (Mapping) Leg I	26: Get Details Exploration, NE Seamounts (Mapping) Leg II	27: Get Details OA spring Mooring Cruise V2	28: Get Details EcoFOCI Non- Reporting Submerged Buoy Recovery in Cross	29: Get Details Exploration, Gulf of Mexico (Mapping) Leg I	30: Get Details Equatorial Mid- Atlantic Ridge Ocean Sound
31: Get Details Exploration, Gulf of Mexico (Mapping) Leg II	32: Get Details Exploration, Caribbean (Mapping) Leg I	33: Get Details PICO (Platform and Instrumentation for Continuous ocean Observations)	34: Get Details Exploration, Caribbean (Mapping) Leg II	35: Get Details Exploration, Caribbean (ROV) Leg III	36: Get Details Exploration and Research of the Arctic Ocean.	37: Get Details REPP-Connectivity- Pulley Ridge	38: Get Details PMEL Autonomous Vehicle Engineering Development	39: Get Details Exploration and Research of Mid- Atlantic Deepwater Hard Bottom Habitats	40: Get Details Atlantic East Coast Mapping: Mapping/Delineating
41: Get Details Exploration, Gulf of Mexico (Mapping/ROV) Leg III	42: Get Details PMEL Ocean Climate Stations Project - Papa mooring	43: Get Details PMEL Ocean Climate Stations Project - ARC mooring	44: Get Details Western Boundary Time Series: Small boat cruises	45: Get Details EX14-01 - Ship and Mission Shakedown	46: Get Details Kingman Palmyra ECS Mapping: Mapping/Delineating	47: Get Details Mendocino ECS Mapping: Mapping/Delineating	48: Get Details OA Chatham Strait Surface Mooring	STOP	



Office of Marine and Aviation Operations

Budget by Project

Fleet Schedule Vessel Budget Project Budget Version Mgmt Project on Maps														
Select	Priority	LO	Org1	Org2	PI	Primary	Project Name	Best Ship	Min DAS	Max DAS	Project Area	Goal/Enterprise Objective	Start Date ~ End Date	
☺	0	OMAO	None				I&T	Ronald H. Brown	5	2			2014/04/25~2014/04/29	
☺	0	NOS	OCS	Hydrographic Surveys Division	Paul Turner, Lucy Hick	Primary	Strait of Juan de Fuca, WA (OPR-N305-FA-14)	Fairweather	23	23	NW CONUS, Washington State, Strait of Juan de Fuca, WA	RCCE	2014/04/05~2014/04/27	
☺	0	OMAO	None				Transit to West Coast & Mission Trials	Reuben Lasker	54	54			2014/02/28~2014/07/13	
☺	0	OMAO	None				R	Reuben Lasker	8	8			2014/07/14~2014/07/21	
☺	0	NOS	NCCOS	CCFHR Applied Ecology and Restoration Research Branch	Chris Taylor	Primary	Characterizing Essential Fish Habitat and Shipwrecks in Wind Energy Areas off North Carolina	Nancy Foster	13	35	Cape Fear, North Carolina	RCCE	2014/05/06~2014/05/18	
☺	0	OAR	CPO	OAR/PMEL, OAR/AOML	Richard A. Feely/Rik Wanninkhof	Primary	Repeat Hydrography A16S (revised)	Ronald H. Brown	3	45	South Atlantic	CAM	2013/10/01~2013/10/03	
☺	0	NMFS	NEFSC		Robert Johnston	Primary	NEFSC Bottom Trawl Survey Autumn - October/November	Henry B. Bigelow	1	36	western north Atlantic from Cape Hatteras to Canada	HO	2013/10/01~2013/10/01	
☺	0	OMAO	None				S	Nancy Foster	1	1			2014/02/20~2014/02/20	
☺	3	OAR	CPO	CINAR, Woods Hole Oceanographic Institution	Dr. Albert J. Plueddemann	Primary	NTAS/MOVE: Northwest Tropical Atlantic Station/Meridional Overturning	Ronald H. Brown	38	18	Northwest tropical Atlantic	CAM	2013/10/04~2013/11/10	



Budget (by DAS/ Ship)

Fleet Schedule	Vessel Budget	Project Budget	Version Mgmt	Project on Maps														
OF Days	0																	
OF \$Amt																		
Total Funded Days	68																	
Total Fund \$Amt	\$1,610,920																	
Total Scheduled Days	68																	

OMAO Budget

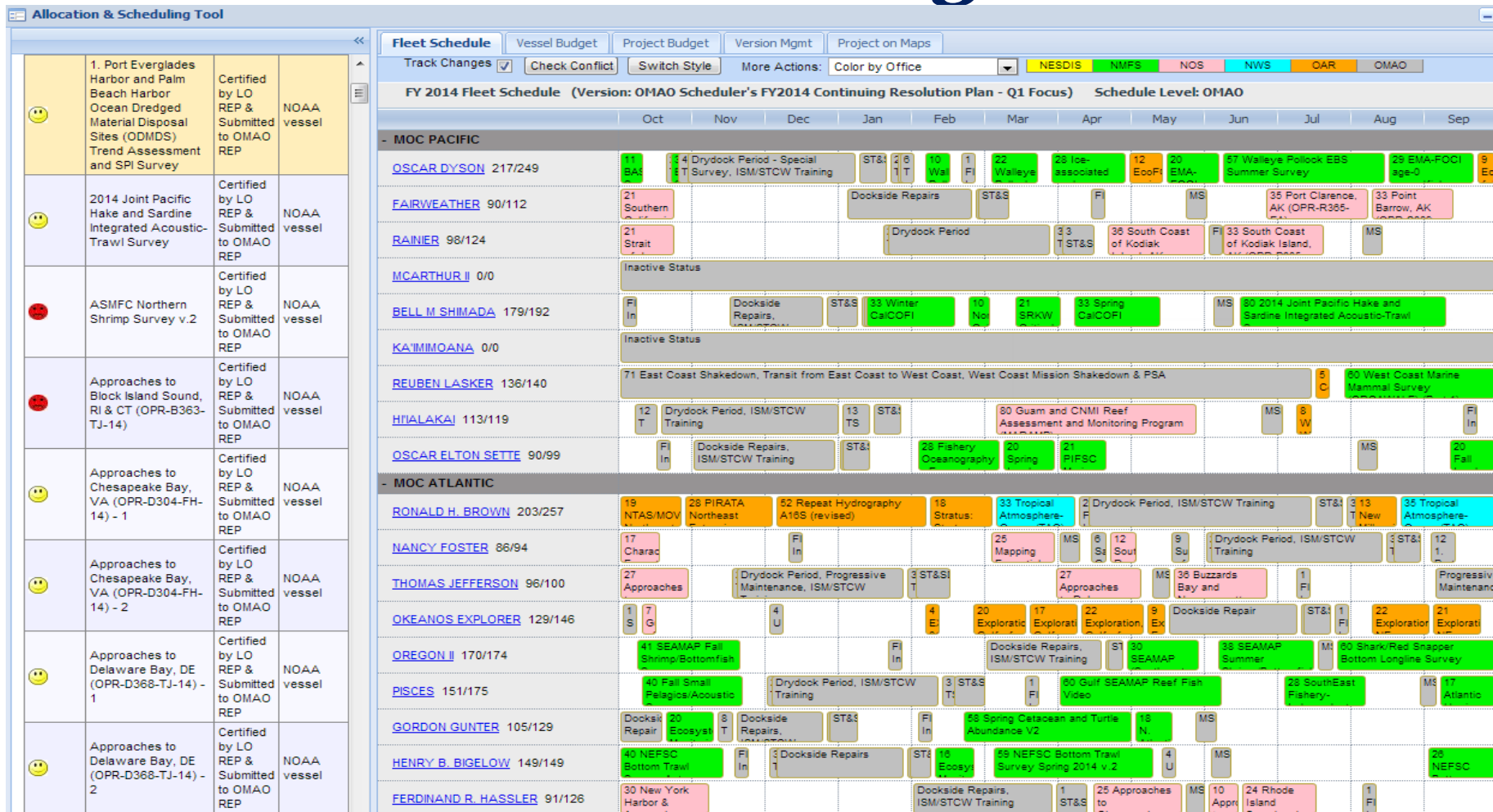
OMAO Budget

OMAO Budget

Ship Name	Total	Bell M. Shimada	Fair-weather	Ferdinand R. Hassler	Gloria Michelle	Gordon Gunter	Henry B. Bigelow	Hāialakai	Ka'imimoana	McArthur II	Nancy Foster	Okeanos Explorer	Oregon II	Oscar Dyson	Oscar Elton Sette	Pisces	Rainier
BF Days	213	10	9	2		9	13	26			6	7	1	22	3	3	13
BF \$Amt	\$3,066,317	\$143,930	\$140,013	\$22,678		\$89,046	\$192,881	\$321,178			\$64,710	\$99,624	\$8,398	\$330,638	\$36,450	\$38,070	\$191,399
PF Days	0																
PF \$Amt																	
NF Days	27										27						
NF \$Amt																	
OF Days	0																
OF \$Amt																	
Total Funded Days	240	10	9	2		9	13	26			33	7	1	22	3	3	13



Scheduling





Fleet Information System

- I. Mission Readiness and General Status Information
 - Ship and aircraft readiness information, including justification for status
 - Current status of Prioritization Allocation Scheduling Process
 - Current Sea Days vs. planned for operating year
 - Current Flight Hours vs. planned for operating year
 - Aggregated customer feedback ratings for each center, asset, and project
 - Organizational metrics and trends



Fleet Information System

- II. Workforce Management Information
- III. Budget & Finance Information
- IV. Engineering & Maintenance Information
- V. Project Metrics Information
- VI. Asset Allocation Information
- VII. Data Management (R2R) Information
- VIII. Safety & Environmental Information



OMAO Leadership Landing Page

Mission Readiness

MOC

Justification goes here

AOC

Justification goes here

SB

Justification goes here

Dive

Justification goes here

Workforce Management

Workforce Mission Readiness

Score Per OMAO Design

Make overall quadrant area mirror Landing Page

Headcount

Total Headcount

Vacancies

Total Vacancies

Retention

Rate of retention

Attrition

Rate of Attrition

Accession

Rate of Accession

Staff Aug

Rate of Augmentation

Budget/Funding

Allocations

\$ 1,900,000,000

Obligations

\$ 1,500,000,000

Commitments

\$ 750,000,000

Variance 1

3.72%

Variance 2

6.5%

Information Management

Readiness

Score Per OMAO Design

Close out of Items (POA&M etc.)

POA&M

Risk (Security Items)

Security

Month

Quarter

FY-to-Date

of Incidents (mechanical/people):

#

of Incidents

#

Category 1

#

Category 2

#

Category 3

#

Key Trends

Accidents

↑

Incidents

↓

Budget Variance 1 (Oblig)

→

Budget Variance 2 (Oblig + Comm)

→

Asset Not Ready

↑

People Not Ready

→

Environmental Incidents

↓

SSI Completion Rate

↓

Data Reliability Issues

↓

Medical and Safety

↓

Personnel Medically Unfit for Duty

↓

Waivers Issued

↑

Key

Needs Attention

↑

Increase

Monitor

→

Stable

On Track

↓

Decline

Planned

Actual

PAS Milestone 1

Operating Year Timeline

Budget Milestone 1

PAS Milestone 1

Project Status

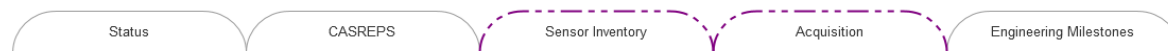
MOC			AOC			OMAO Small Boat			Dive		
DAS Vs Planned	DATA	Customer Feedback	Flight Hours Vs Planned	Data	Customer Feedback	DAS Vs Planned	DATA	Customer Feedback	DAS Vs Planned	DATA	Customer Feedback
320/352	Timeliness	1 2	5400/5300	Timeliness	1 2		Timeliness	1 2		Timeliness	1 2
	Accuracy	2 7		Accuracy	2 7		Accuracy	2 7		Accuracy	2 7
90.9%	Reliability	3 23	101.88%	Reliability	3 23		Reliability	3 23		Reliability	3 23
		4 35			4 35			4 35			4 35

Jump to:

[FAP/AAP](#)
[Time Requests](#)
[Sensor Inventory](#)
[Rosters](#)
[Safety Culture](#)
[CASREPS](#)



Engineering (Leadership View)

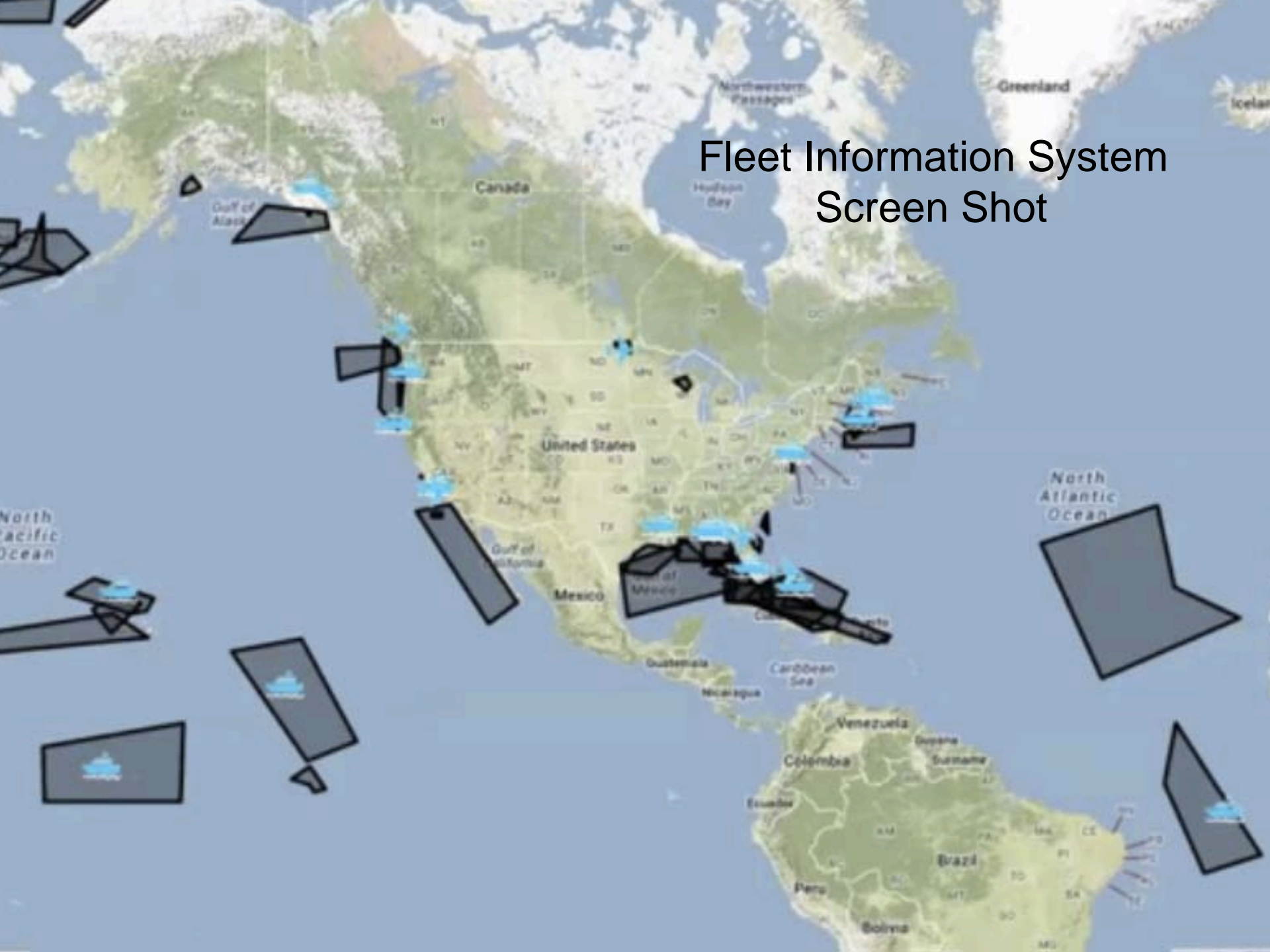


Export

Archives



Fleet Information System Screen Shot



Questions?



Office of Marine and Aviation Operations