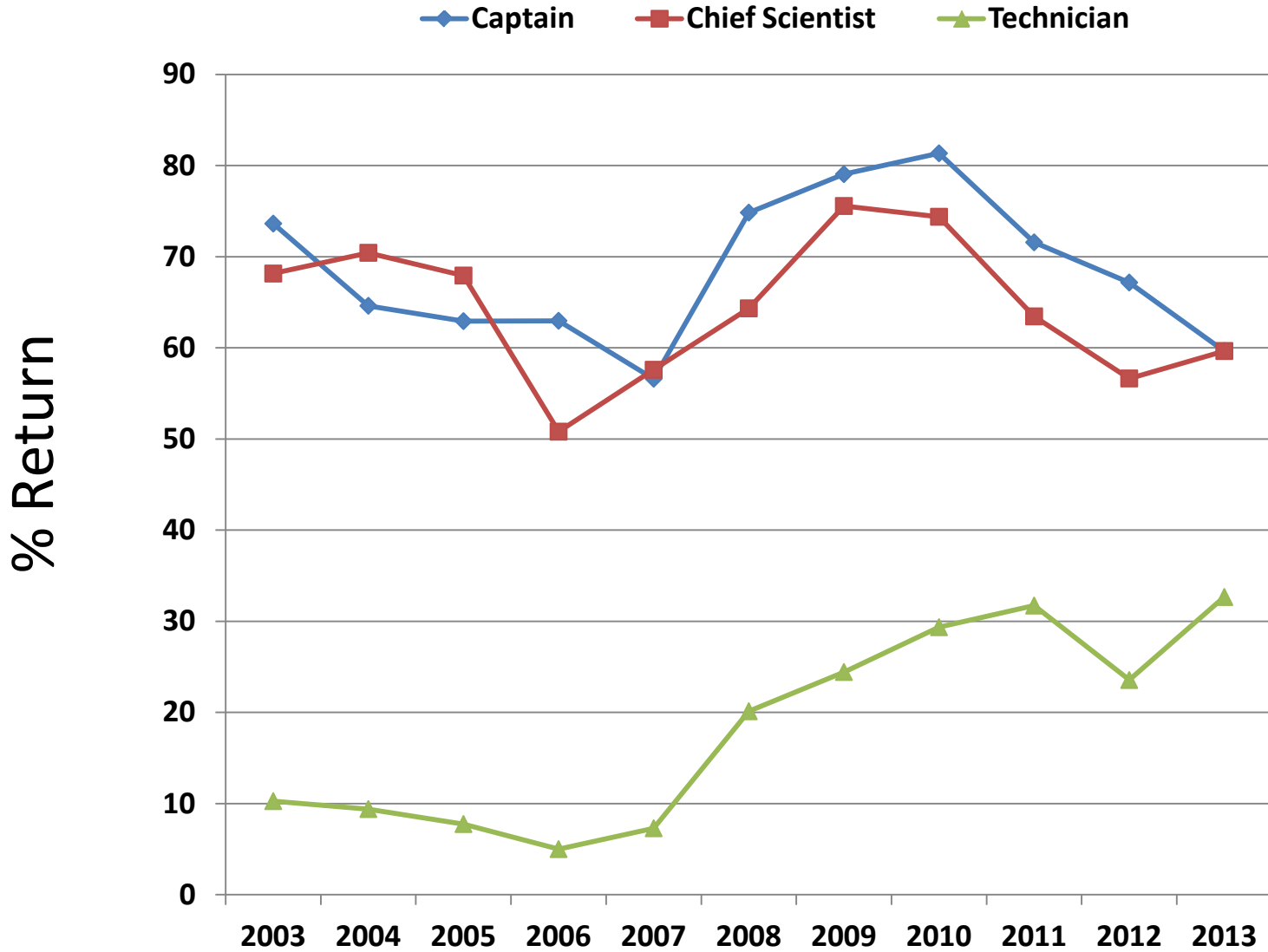


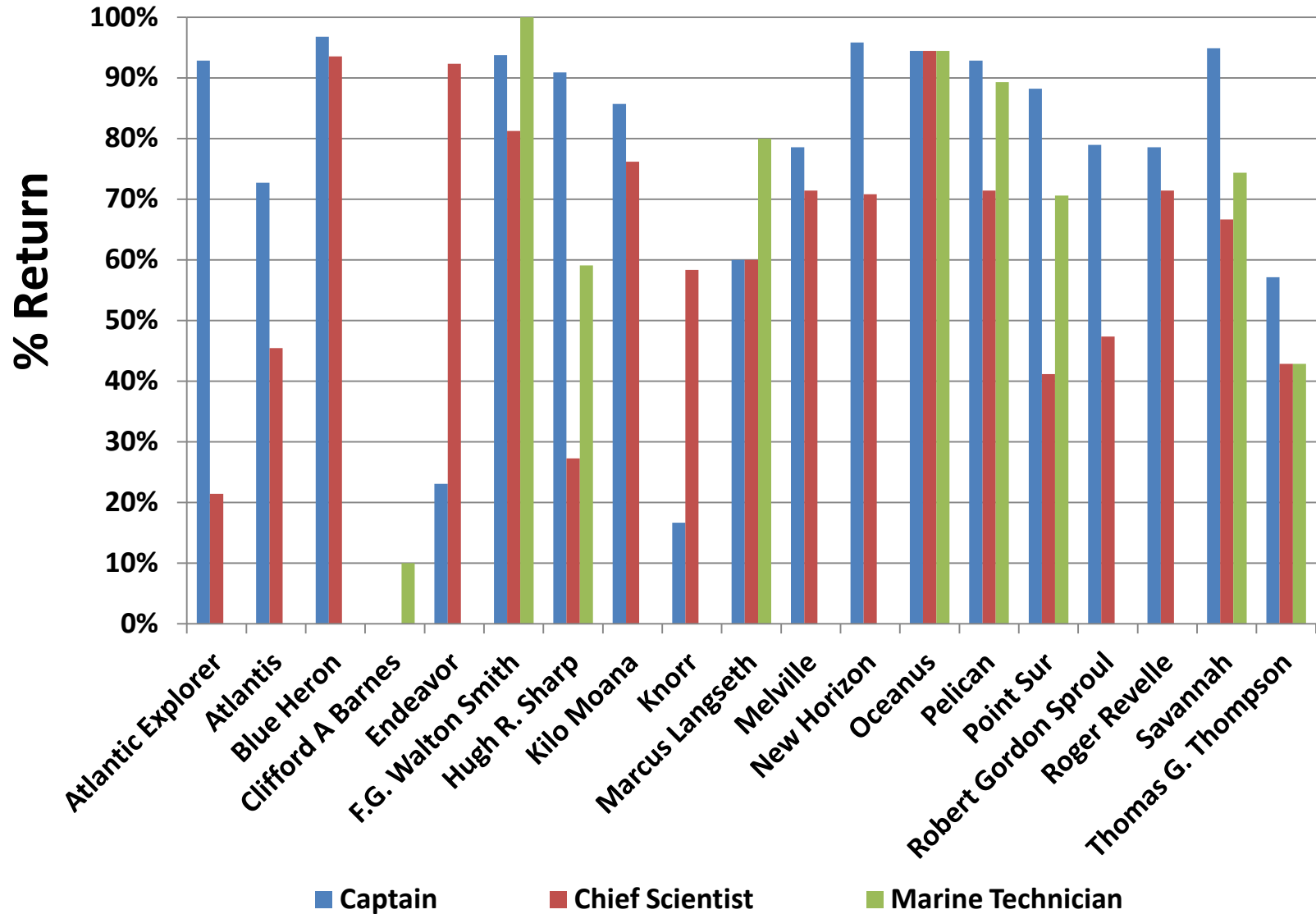
Summary of 2013 Post Cruise Assessment and Safety Reports

Caitlin Mandel/UNOLS
2014 RVOC Meeting

Fleet Percent Return for Post Cruise Assessments 2003 - 2013

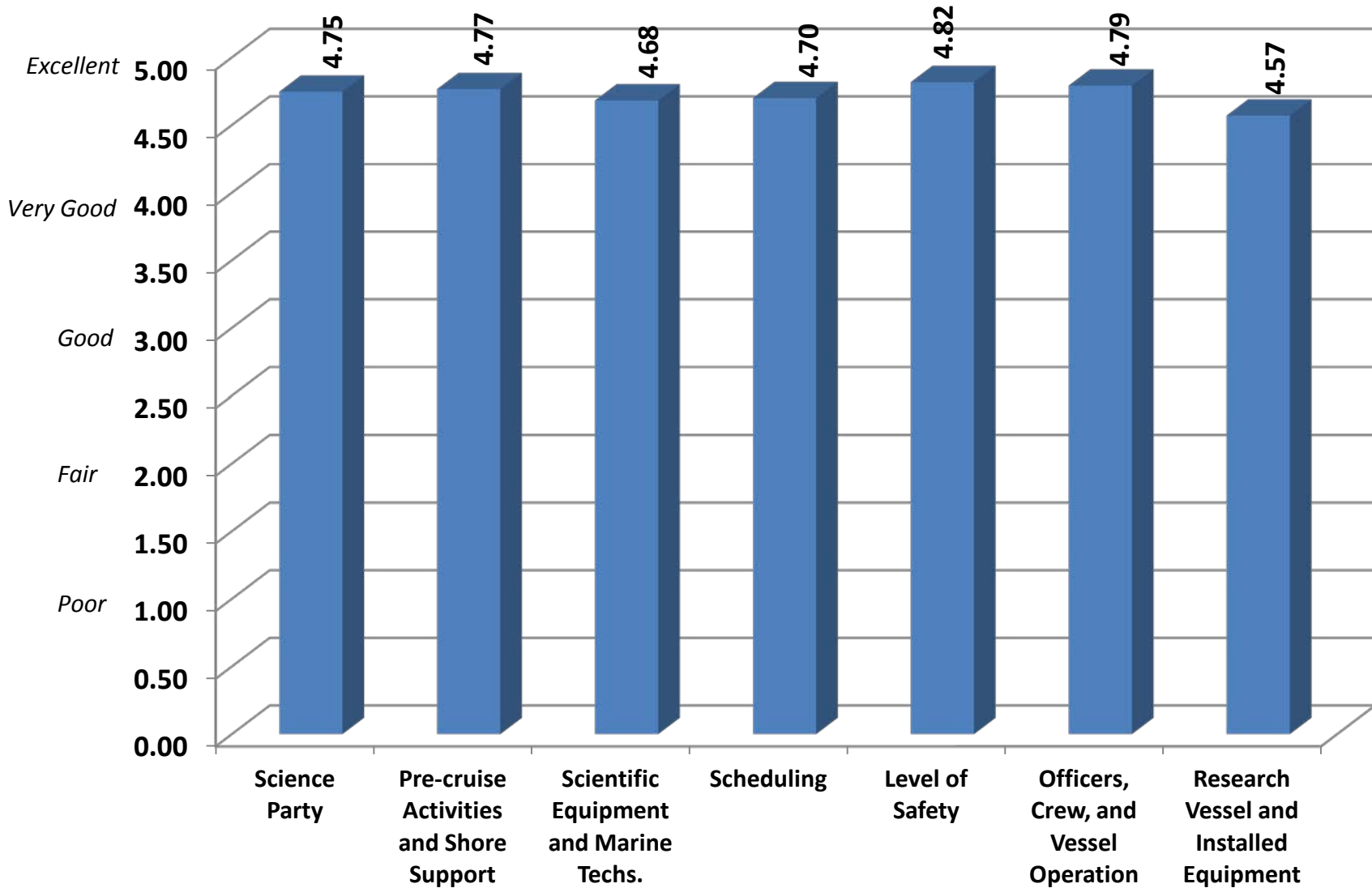


% PCAR Returns for 2013



How well did the following elements contribute to achieving the scientific objectives of this cruise? (2013)

■ Average Fleetwide Rating

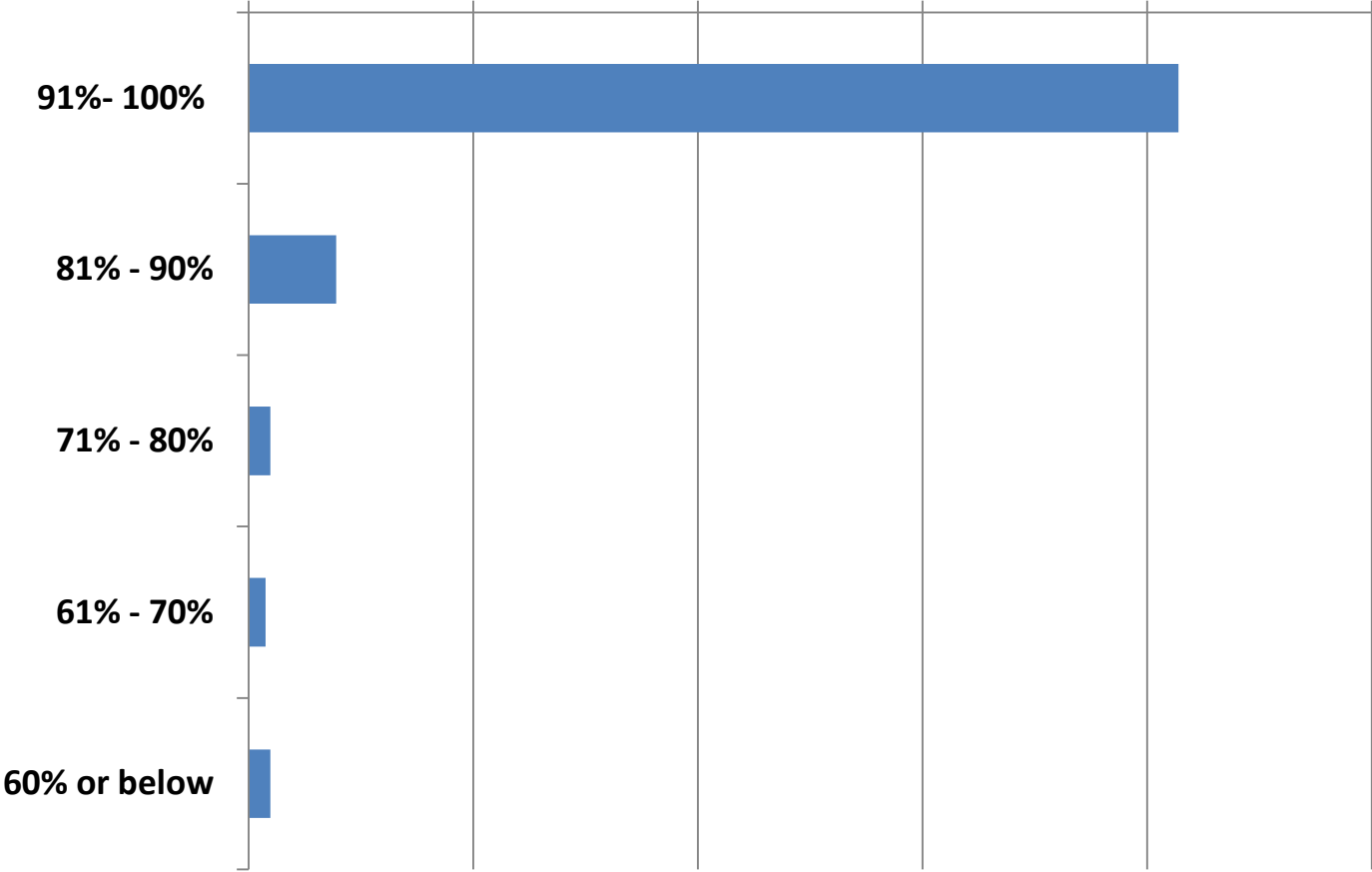


To what extent were the planned science objectives of this cruise met?

■ Percent of Respondents

0.00% 20.00% 40.00% 60.00% 80.00% 100.00%

Declared Cruise Success Rate

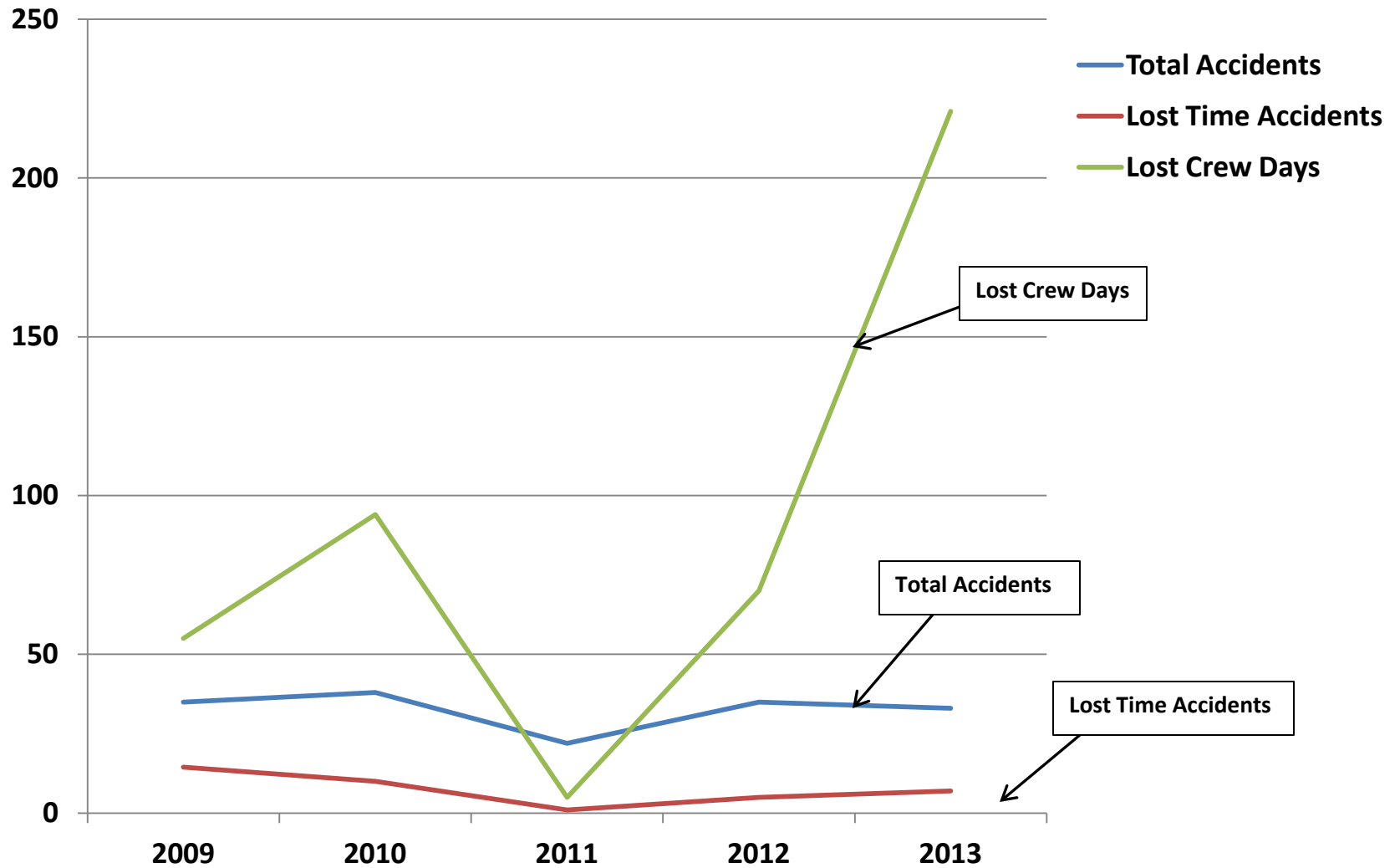


Status of Safety Reports Submitted for 2013

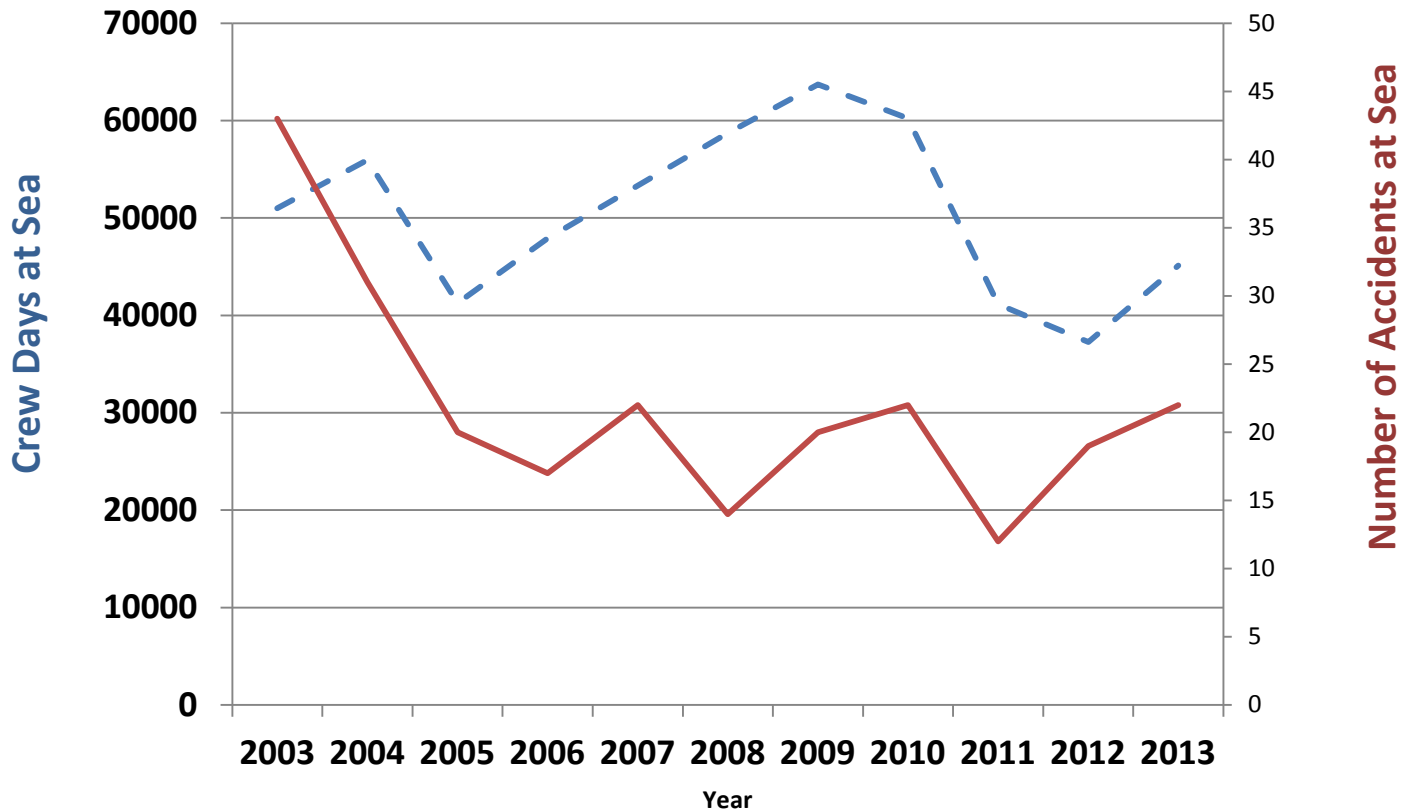
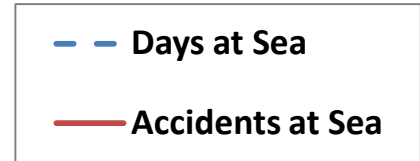
2013 RVOC Safety Statistic Reports Received				
Click on the link below to complete reports				
http://www.unols.org/committees/rvoc/rvoc_only/safetyrept.asp				
Quarter Reported	2013-1st	2013-2nd	2013-3rd	2013-4th
Atlantic Explorer	X	X	X	X
Atlantis	X	X	X	X
Blue Heron	X	X	X	X
Clifford A. Barnes		X		X
Endeavor	X	X	X	X
Hugh R. Sharp	X	X	X	X
Kilo Moana	X	X	X	X
Knorr	X	X	X	X
Marcus Langseth	X	X	X	X
Melville	X	X	X	X
New Horizon	X	X	X	X
Oceanus	X	X	X	X
Pelican	X	X		X
Point Sur	X	X	X	X
Robert Gordon Sproul	X	X	X	X
Roger Revelle	X	X	X	X
Savannah	X	X	X	X
Thomas G. Thompson		X		X
Walton Smith	X	X	X	X
Total Ships Reported	17	19	16	19
Total Ships	19	19	19	19
% of Ships Reported	89%	100%	84%	100%

**2014 Safety
Report
Submittal Rate
only 42 % so far**

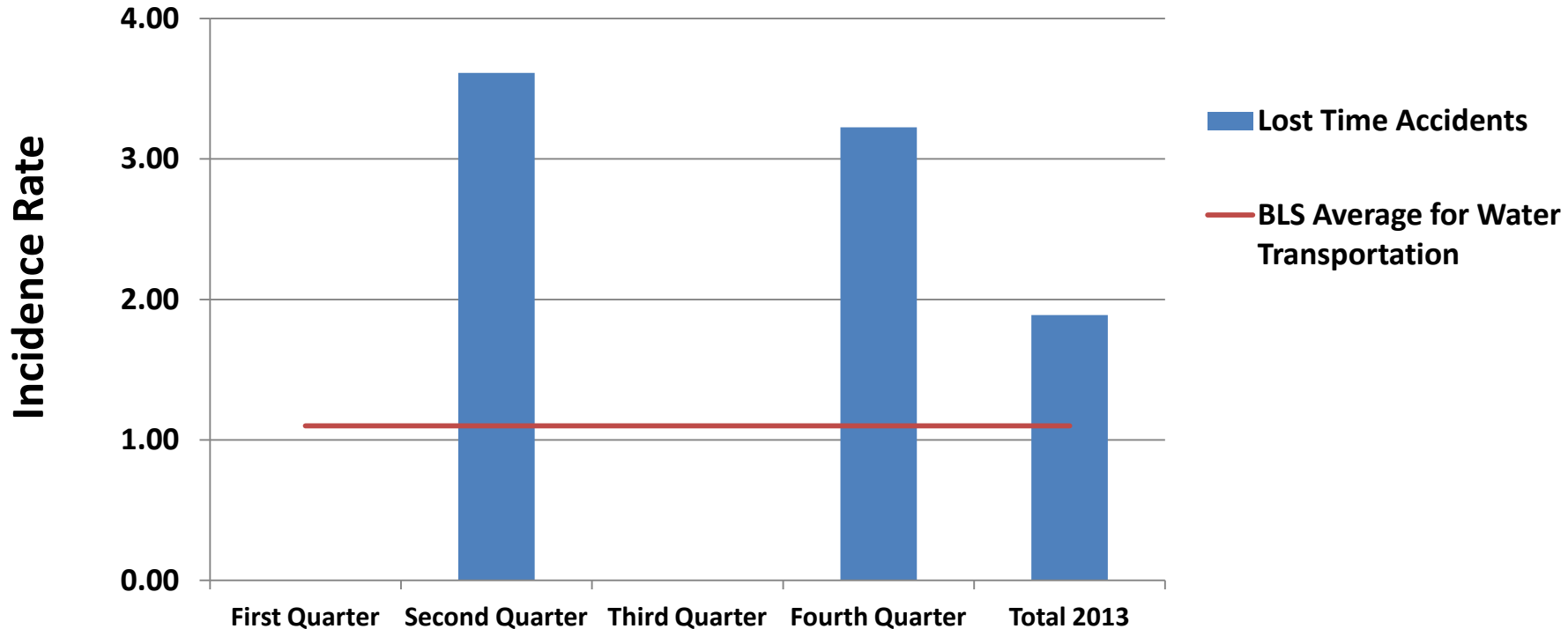
UNOLS Fleet 2007 – 2013 Total Accidents and Lost Crew Days



Total Days at Sea and Total Accidents at Sea UNOLS Vessels 2003-2013



2013 Lost Time Accidents UNOLS Vessels Per 100 F/T Employees



Incidence Rate = (Number of injuries X 200,000)/Employee hours worked

Note: the 200,000 in the formula represents the equivalent of 100 employees working 40 hour per week for 50 weeks per year and provides the standard base for incidence rates according to the Bureau of Labor Statistics (BLS).