

R/V SIKULIAQ

AICC January 14, 2014



UNIVERSITY OF ALASKA FAIRBANKS
America's Arctic University

R/V SIKULIAQ Characteristics

Length, Overall	LOA	261 feet
Length, Design Waterline	LWL	237 feet 0 inches
Beam, Max across reamer	Bmax	52 feet
Beam, Max across hull amidship	Bmidship	48 feet
Depth, Keel to Main Deck	D	28 feet
Draft, Design Waterline	TDWL	18 feet 9 inches
Freeboard, Design Waterline	FDWL	8 feet 9 inches
Displacement at Design Waterline		3,665 long tons
Propulsion Power	P	5,750 BHP



R/V SIKULIAQ Performance

Endurance	45 days	
Endurance, Hotel Only	60 days	
Range	11 knots	9,000 NM preliminary
Cruise Speed	transit speed	11 knots
Max Speed, Calm Open Water	Vcalm	14.2 knots
Max Speed, 4 M Sea (13.1 ft)	Vss 5	12.3 knots
Level Ice at 2 knots	Ice thickness	3 feet



R/V SIKULIAQ Capacities and Working Area

Science Berths	24
Crew Berths	20 crew plus 2 marine technicians
Science deadweight	100 long tons
Aft Deck 20' ISO Van Services and Twist Lock	3 Fixed locations
Fwd Deck 10' ISO Van Services and Twist Lock	1 Fixed location
Science storage	8,000 cubic feet
Science Labs	2250 square feet
Deck Working Area	4360 square feet



Tentative R/V SIKULIAQ Schedule

Tentative Date	Schedule
November/December, 2013	Builders Sea Trials Completed
February, 2014	Acceptance Trials
Late February, 2014	UAF takes delivery of the vessel at MMC
March, 2014	Dockside MMC (Outfit and Crew Training)
April, 2014	Depart Great Lakes via St Lawrence Sea Way
May, 2014	Ice Trials Baffin Bay
June, 2014	WHOI (PCO2, Gravimeter, Geo Cam install)
July, 2014	Puerto Rico Winch Trials
August, 2014	Transit to the Pacific Northwest Passage
September 2014	Baco-Taylor Cruise, Dutch Harbor to Honolulu
October/November, 2014	Tominaga Cruise, Honolulu to Guam
December, 2014	Castillo Cruise, Guam to Japan
January, 2015	Transit to Astoria, OR



R/V SIKULIAQ



**ARRV (0650) MV SIKULIAQ
PROGRESS PHOTO**

VIEW: 001
DATE: 10-08-13
CONTRACT NO.: UAF-10-0040
DESCRIPTION: ARRV on Menominee River going
on trials



Stern Looking Forward



A-Frame



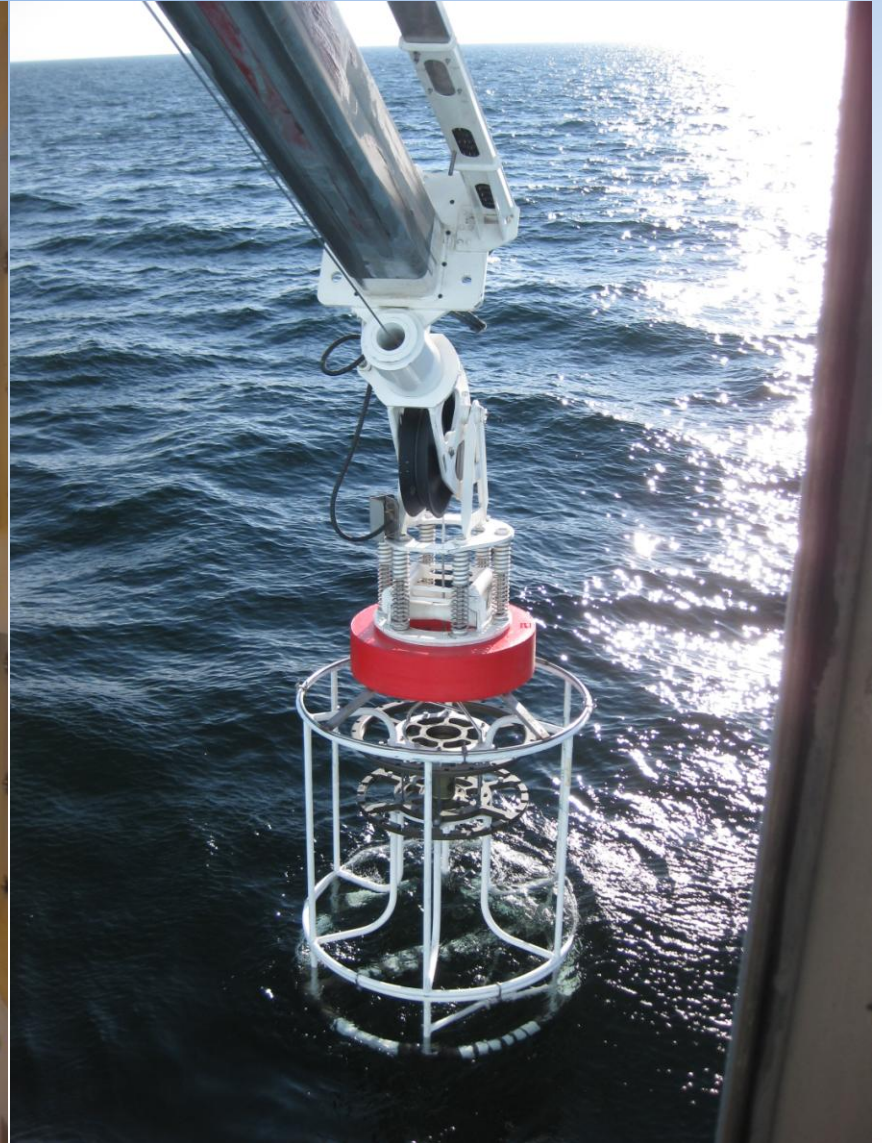
Normal Deployed Position Full Load Capacity



Fully Deployed Position Reduced Load Capacity



CTD Load Handling System



UNIVERSITY OF ALASKA FAIRBANKS
America's Arctic University

Science Control Room (AFT Winch Control and AFT Con)



**ARRV (0650) MV SIKULIAQ
PROGRESS PHOTO**

VIEW: 014
DATE: 10-13-13
CONTRACT NO.: UAF-10-0040
DESCRIPTION: Science / Control Room 02 67-01



UNIVERSITY OF ALASKA FAIRBANKS
America's Arctic University

Integrated Bridge (Marine Technologies)



**ARRV (0650) MV SIKULIAQ
PROGRESS PHOTO**

VIEW: 015
DATE: 10-13-13
CONTRACT NO.: UAF-10-0040
DESCRIPTION: Bridge 04-24-0



Center Control Station



**ARRV (0650) MV SIKULIAQ
PROGRESS PHOTO**

VIEW: 019
DATE: 10-13-13
CONTRACT NO.: UAF-10-0040
DESCRIPTION: Bridge 04-24-0



UNIVERSITY OF ALASKA FAIRBANKS
America's Arctic University

AFT Winch Room (Traction Winch)

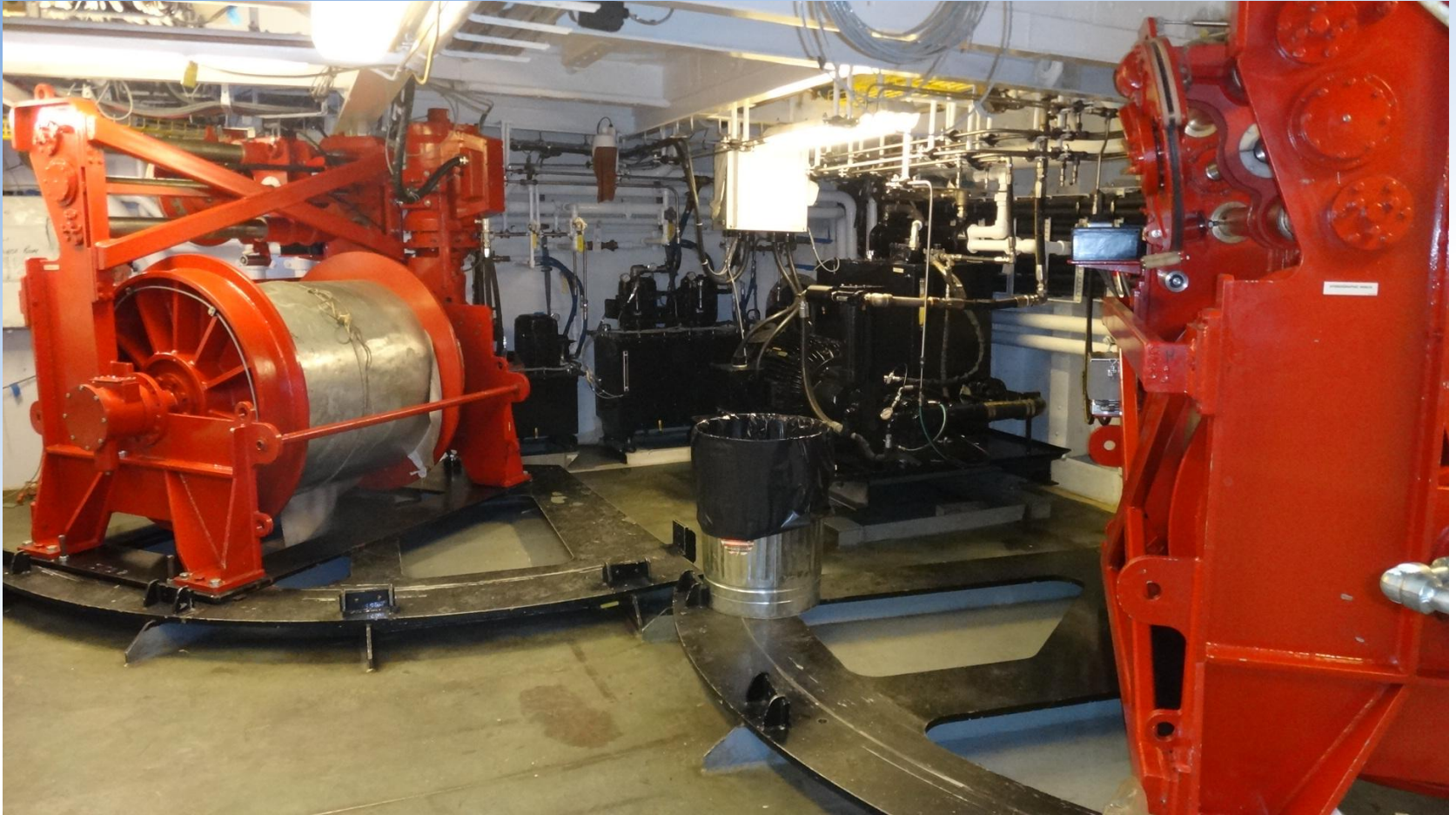


ARRV (0650) MV SIKULIAQ
PROGRESS PHOTO

VIEW: 031
DATE: 10-13-13
CONTRACT NO.: UAF-10-0040
DESCRIPTION: Aft Winch Room 2-85-0



Forward Winch Room



UNIVERSITY OF ALASKA FAIRBANKS
America's Arctic University

SIKULIAQ Science Sonar Install

June, 2013 Sturgeon Bay, Wisconsin

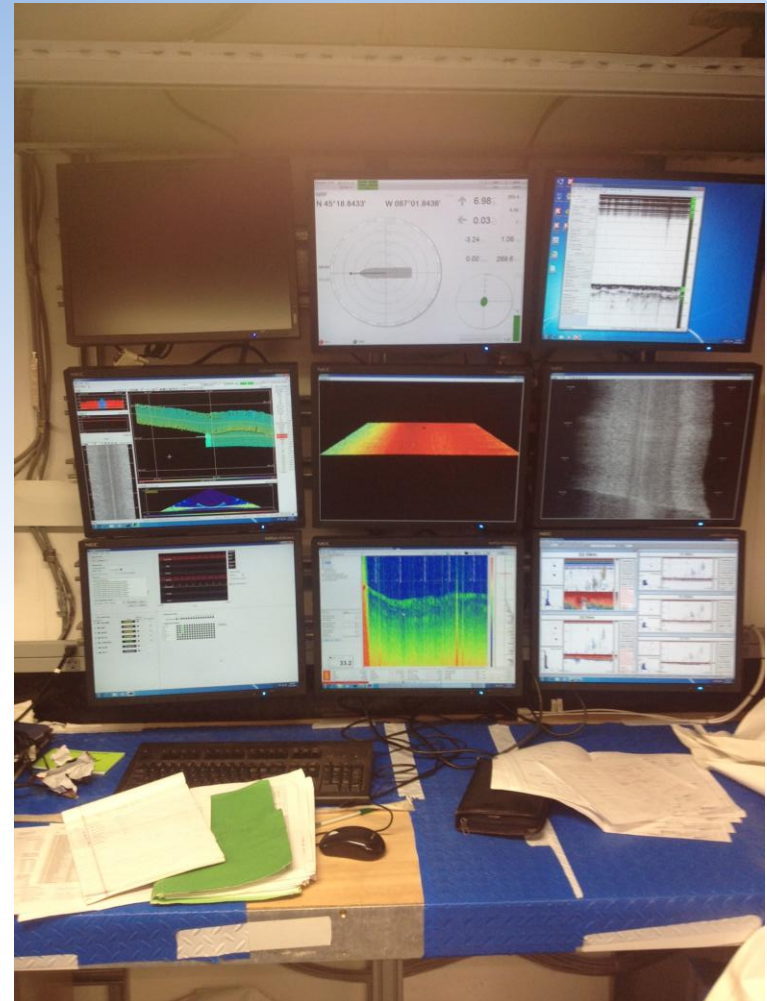


UNIVERSITY OF ALASKA FAIRBANKS
America's Arctic University

EM302 TX Install (Cameo Dale Chayes)



Sonar Light Off



Questions?

