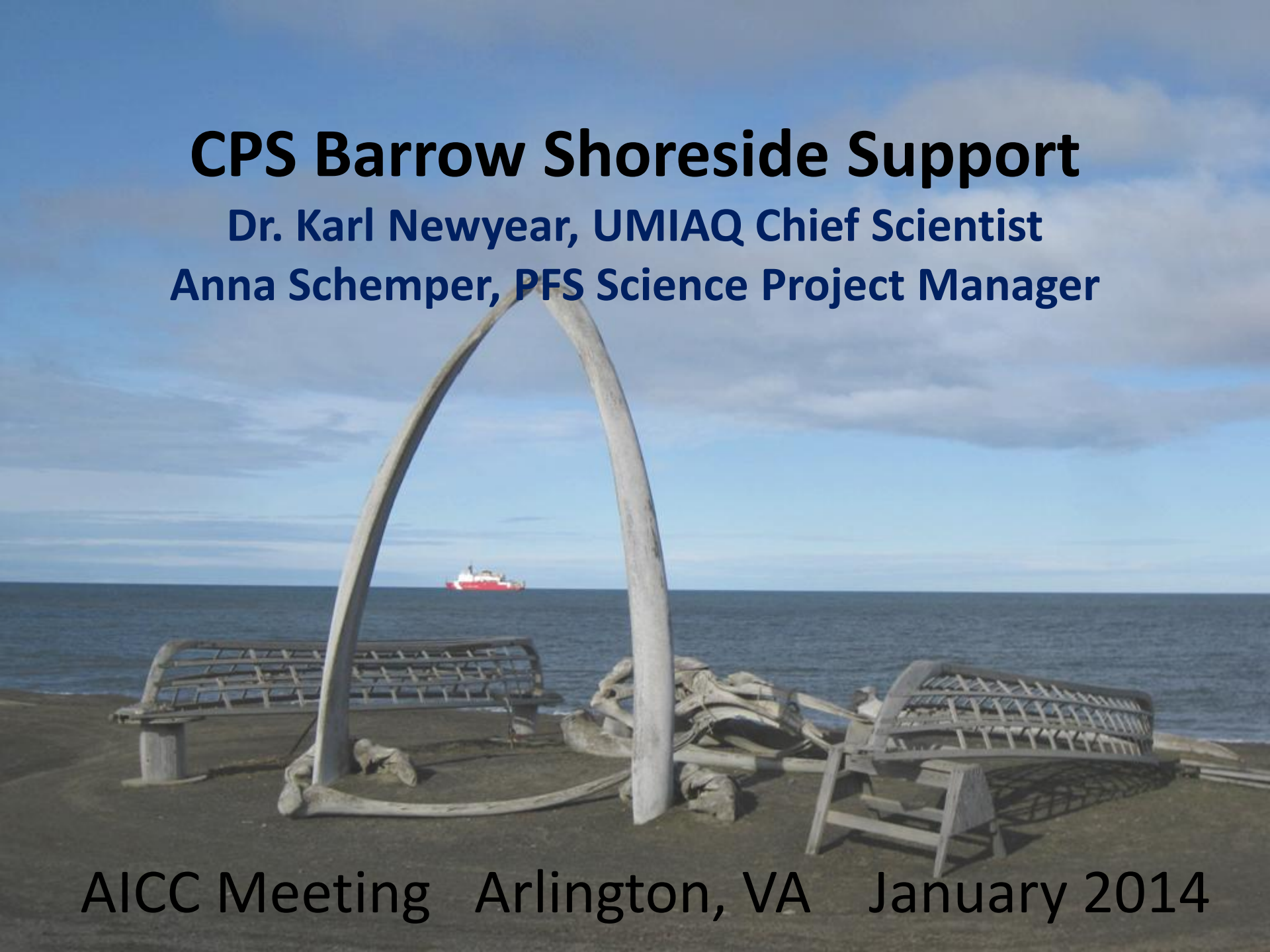


CPS Barrow Shoreside Support

Dr. Karl Newyear, UMIAQ Chief Scientist

Anna Schemper, PFS Science Project Manager



AICC Meeting Arlington, VA January 2014

Who are we?



2013 Activities Relevant to AICC

- Participated in January AICC meeting and June teleconference
- Supported 2 logistics stopovers for *HEALY* at Barrow involving 1 NSF and 2 non-NSF research parties including:
 - Coordinating use of NSB SAR hangar
 - Receipt, handling, and interim storage of freshies
 - Assisting with local lodging and ground transportation
 - Coordinating preparations for flight ops with OAS/Cannon Mix
- Hired Community Observers for 2 USCG cruises
- Facilitated delivery of critical science supplies to HLY1303 (Pickart) at no cost to NSF
- Provided ground support for group disembarking from CCGC *LAURIER*

2013 Challenges

- Responding to events beyond our control emphasizes need for contingency plans



Photo credit: Michael Smalley, Anchorage Daily News

2013 Challenges

- Other vessel and helicopter traffic in area may impact our operations:
 - Communications and Air Traffic Control
 - Shoreside logistics



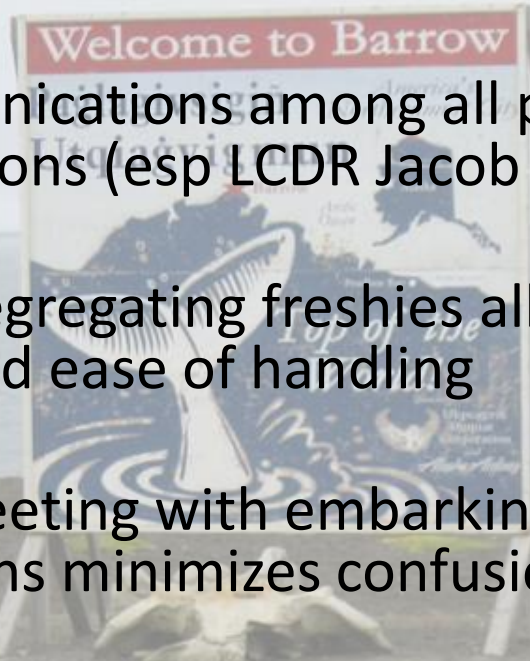
2013 Challenges

- General coordination of cargo
- Embarking researchers' arrival in Barrow one day prior to operations



2013 Successes

- Excellent communications among all parties, before, during, and after operations (esp LCDR Jacob Cass)
- Palletizing and segregating freshies allows for better accountability and ease of handling
- Informational meeting with embarking researchers in evening prior to operations minimizes confusion
- Local entities (NSB SAR, AC Store, FAA, NSB S&R) have been very accommodating
- Decent weather for ship-shore transfers



NUNANIQ

- Barge used for off-load of Cooper group/partial Keigwin onload
- Served as logistical proof of concept
- May not be practical/economical given Bowhead scheduling limitations



Plans for 2014

- Continue to provide shoreside logistics as requested and within reasonable scope
- Improve Barrow Logistics Stopover protocols and documentation, including information on icefloe.net so researchers know what to expect
- Maintain dialogue with USCG, OAS, STARC, and other groups
- Monitor and communicate with Barrow visitors regarding potential offshore O&G activities and their effect on shoreside resources (esp. lodging)
- Continue to provide Community Observers for USCG cruises; Researchers responsible for Marine Mammal Observers if required

Additional Information

- Barrow Bulletin (www.barrowbulletin.com)
- CPS (www.cpspolar.com)
- Ukpeagvik Iñupiat Corporation (www.uicalaska.com)
- Polar Field Services (www.polarfield.com)
- City of Barrow (<http://cityofbarrow.org/>)
- North Slope Borough (<http://www.north-slope.org/>)

Questions?



Quyanakpak (Thank You)